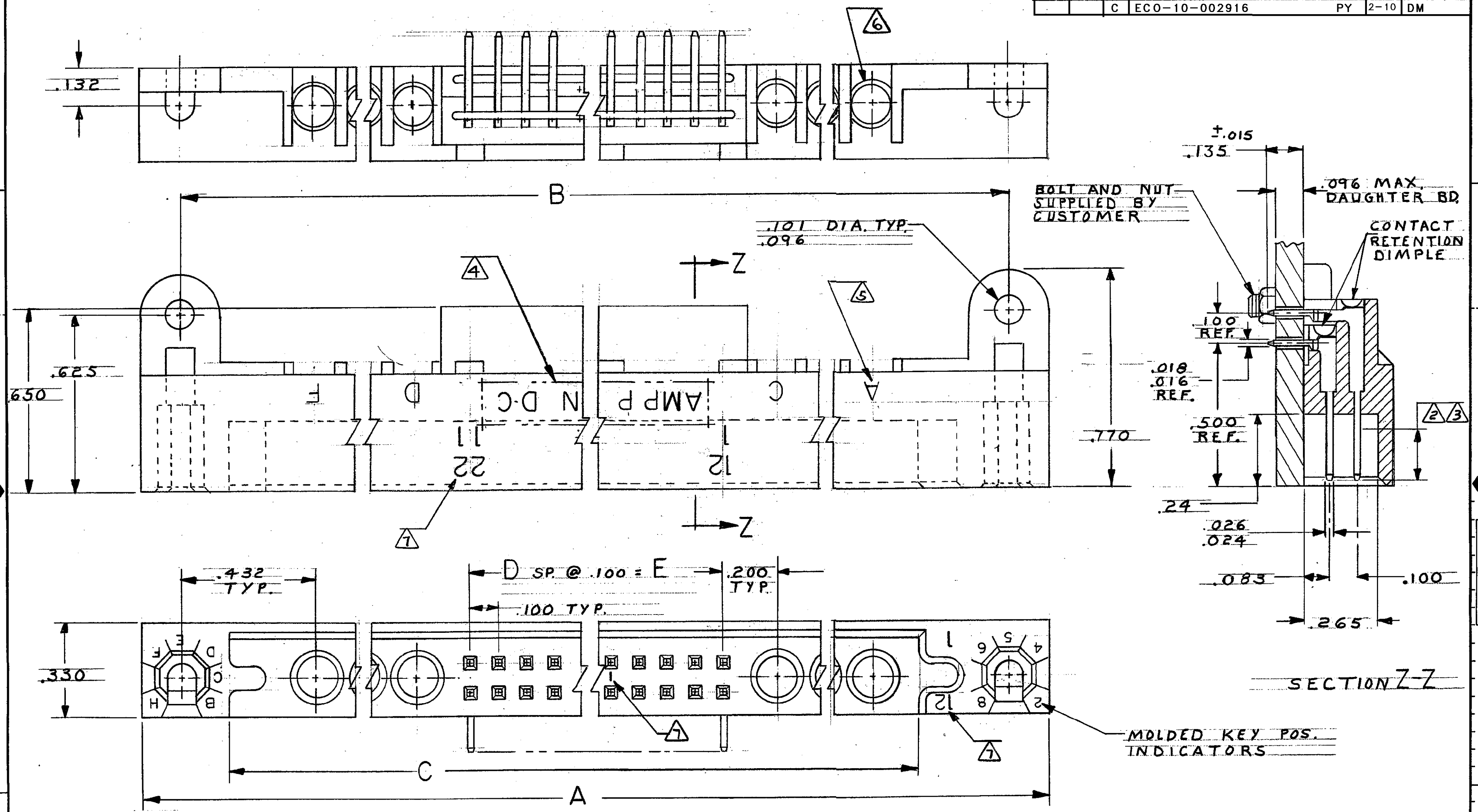


THIS DRAWING IS UNPUBLISHED. RELEASED FOR PUBLICATION 19
 © COPYRIGHT 19 BY AMP INCORPORATED, HARRISBURG, PA. ALL INTERNATIONAL RIGHTS RESERVED. AMP PRODUCTS MAY BE COVERED BY U.S. AND FOREIGN PATENTS AND/OR PATENTS PENDING.

		REVISIONS				
P	F	ZONE	LTR	DESCRIPTION	DATE	APPROVED
✓	✓	0		RELEASED	m.s. 7-85	
✓	✓	A		REV PER DF-4316	ATG 8-91	AMM
		B		REV 0600-5641-96	TT 9-97	AMM
		C		ECO-10-002916	PY 2-10	DM

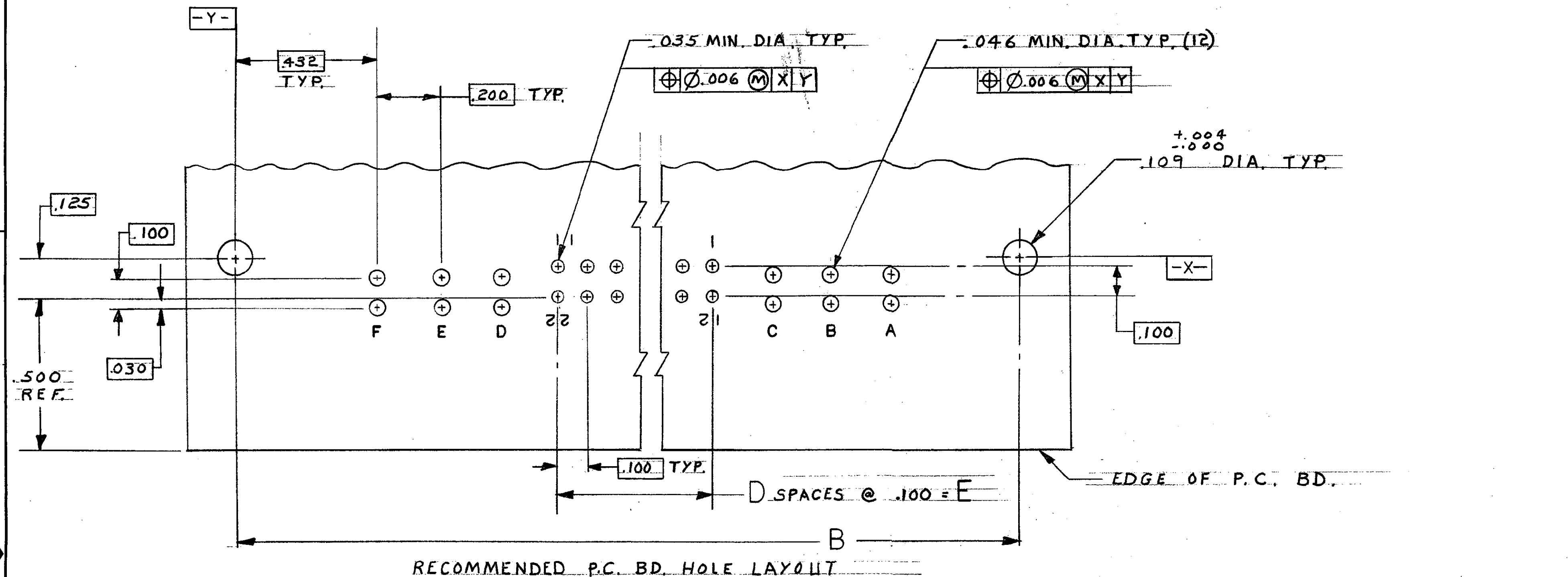


533637

UNLESS OTHERWISE SPECIFIED DIMENSIONS ARE IN INCHES. TOLERANCES ON: DECIMALS ± .010 ANGLES ±		CONTRACT NO DR <i>M. Smith</i> 7-18-85 CHK <i>E. A. McDougle</i> 7-25-85 APPD <i>E. A. McDougle</i> 7-25-85 APPD <i>J. B. Hall</i> 7/25/85		PART NO AMP AMP INCORPORATED Harrisburg, Pa. 17105	
MATERIAL HOUSING: ① CONTACT: ②	FINISH CONTACT: ③	NAME PIN HEADER ASSEMBLY, RIGHT ANGLE, 1001 SERIES, 6 COAX POSITIONS.		SIZE C	FSCM NO 00779
		DRAWING NO 533637		REV C	
		SCALE 4:1		SHEET 1 OF 2	

THIS DRAWING IS UNPUBLISHED. RELEASED FOR PUBLICATION, 19
 © COPYRIGHT 19 BY AMP INCORPORATED, HARRISBURG, PA. ALL INTERNATIONAL RIGHTS RESERVED. AMP PRODUCTS MAY BE COVERED BY U.S. AND FOREIGN PATENTS AND/OR PATENTS PENDING.

REVISIONS					
P	F	ZONE	DESCRIPTION	DATE	APPROVED
✓	✓		SEE SHEET 1 OF 2		



- 1. GLASS FILLED POLYESTER COLOR: BLUE.
- 2. BRASS
- 3. .000050 NICKEL UNDERPLATE ALL OVER .000050 GOLD IN THIS AREA, .000100 TIN-LEAD ON SOLDER POSTS.
- 4. AMP PART NO. AND DATE CODE MARKED THIS APPROX AREA
- 5. COAX POSITIONS (A, B, C, D, E & F) MARKED THIS AREA
- 6. WILL ACCEPT MICROMINIATURE COAX CONTACT, AMP P/N 227602-1 & 227604-1, INSERT CONTACT P/N 227602-1 FROM THIS SIDE BEFORE MTG. TO P.C. BD. OR ACCEPTS COAX CABLE CONTACT.
- 7. CONTACT POS. MARKED ON THIS SIDE, AND NUMBERS INDICATING EVERY FIFTH CAVITY MARKED ON SIDE NUMBERS INDICATING END CAVITIES MARKED ON MATING FACE AND LINES INDICATING EVERY FIFTH CAVITY MARKED ON MATING FACE

	E	D	C	B	A	No. of COAX POS.	No. of BOX POS.	PART NO
OBS	5.500	55	7.175	7.564	7.855	6	112	1-533637-0
OBS	5.000	50	6.675	7.064	7.355	↑	102	↑ -9
OBS	4.500	45	6.175	6.564	6.855		92	-8
OBS	4.000	40	5.675	6.064	6.355		82	-7
OBS	3.500	35	5.175	5.564	5.855		72	-6
	3.000	30	4.675	5.064	5.355		62	-5
OBS	2.500	25	4.175	4.564	4.855		52	-4
OBS	2.000	20	3.675	4.064	4.355		42	-3
OBS	1.500	15	3.175	3.564	3.855	↓	32	↓ -2
OBS	1.000	10	2.675	3.064	3.355	6	22	533637-1

UNLESS OTHERWISE SPECIFIED DIMENSIONS ARE IN INCHES. TOLERANCES ON: DECIMALS ± .010 ANGLES ±	CONTRACT NO	AMP INCORPORATED Harrisburg, Pa. 17105	
	DR <i>M. Smith</i> 7-19-85 CHK <i>E. A. McDougle</i> 7-25-85 APPD <i>E. A. McDougle</i> 7-25-85 APPD <i>[Signature]</i> 7/25/85	NAME PIN HEADER ASSEMBLY, RIGHT ANGLE, 1001 SERIES, 6 COAX POSITIONS.	
MATERIAL	DSGN APPD	SIZE C	FSCM NO 00779
FINISH	OTHER APPD	DRAWING NO 533637	REV C
		SCALE 4:1	SHEET 2

X-ON Electronics

Largest Supplier of Electrical and Electronic Components

Click to view similar products for [Headers & Wire Housings](#) category:

Click to view products by [TE Connectivity](#) manufacturer:

Other Similar products are found below :

[95000-104TRLF](#) [10135584-644402LF](#) [DF62W-EP2022PCA](#) [95000-106TRLF](#) [DF62W-2022SCA](#) [DF62W-EP2022PC](#) [2203348](#) [DF62W-2022SC](#) [1084018](#) [1029039](#) [1084017](#) [802-10-012-10-002000](#) [1112640](#) [1112639](#) [000-34000](#) [0009482033](#) [0009507031](#) [57102-S06-03LF](#) [57202-S52-04LF](#) [PCN6-15S-2.5E](#) [0039019024](#) [58102-G61-06LF](#) [582553-1](#) [0009485154](#) [0009508121](#) [0022285053](#) [0050291907](#) [018731A](#) [LY20-4P-DT1-P1E-BR](#) [02.125.8002.8](#) [60101931](#) [60598-1 \(Cut Strip\)](#) [M1625-3R/100](#) [61062-3](#) [61082-181009](#) [636-1427](#) [638009-1](#) [641938-9](#) [641991-4](#) [644168-1](#) [647662-1](#) [65039-019ELF](#) [65817-002LF](#) [65817-015LF](#) [65863-015LF](#) [66207-023LF](#) [67016-026LF](#) [67046-001LF](#) [67095-007LF](#) [67230-005LF](#)