

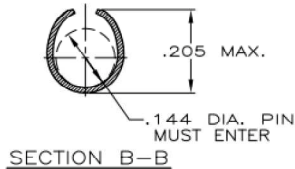
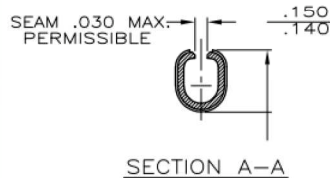
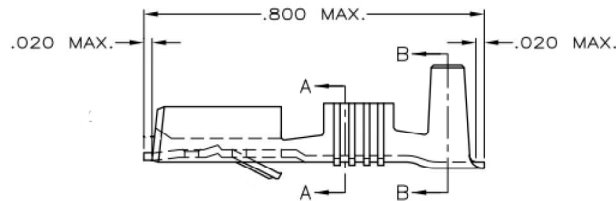
DO NOT SCALE  
DIMENSIONS IN mm

METRIC



NOTES:

1. PLATING: SILVER, THICKNESS 0.000150 MIN
2. PLATING: ELECTRO TIN, THICKNESS 0.000040 MIN
3. PLATING: SILVER, THICKNESS 0.000120 MIN
4. PLATING: SILVER, THICKNESS 0.000100 MIN
5. PLATING: PRE TIN



WIRE RANGE :  
1.0-2.5 mm<sup>2</sup>  
INSULATION RANGE :  
.120-.160 INCH

	5	BRASS	6-160449-7
	3	BRASS	6-160449-6
	2	BRASS	6-160449-5
	1	PH.BRONZE	6-160449-3
	2	PH.BRONZE	6-160449-2
	NONE	PH.BRONZE	6-160449-1
	NONE	BRASS	6-160449-0
6-160449-6	3	BRASS	1-160449-3
6-160449-5	2	BRASS	1-160449-2
6-160449-3	1	PH.BRONZE	1-160449-1
6-160449-2	2	PH.BRONZE	1-160449-0
6-160449-1	NONE	PH.BRONZE	160449-9
6-160449-0	NONE	BRASS	160449-8
INACTIVE	4	BRASS	160449-7
6-160449-6	3	BRASS	160449-6
6-160449-5	2	BRASS	160449-5
6-160449-0	NONE	BRASS	160449-4
6-160449-3	1	PH.BRONZE	160449-3
6-160449-2	2	PH.BRONZE	160449-2
6-160449-1	NONE	PH.BRONZE	160449-1

SUPERSEDED BY FINISH MATERIAL PARTNUMBER

CUSTOMER DRAWING FOR REFERENCE ONLY WILL NOT BE UPDATED

THIS DRAWING IS UNPUBLISHED RELEASED FOR PUBLICATION



NAME  
.250 SRS FASTIN-ON RECEPTACLE.

A3	views corrected as per PD:	GG	DT	19DEC16
LTR.	REVISION RECORD	DR.	CHK.	DATE
DR.:	D. KESSLER	CHK.:	P. BELNON	APP.:
DATE:	19 JAN 95	DATE:	-	L.V.SOEST
DATE:	-	DATE:	-	

DWG. No.	REV. LTR.	SHEET
160449	R A3	1 of 1

## X-ON Electronics

Largest Supplier of Electrical and Electronic Components

*Click to view similar products for [Terminals](#) category:*

*Click to view products by [TE Connectivity](#) manufacturer:*

Other Similar products are found below :

[HT-13-10](#) [71M-250-32-NB](#) [01-2065-1-0216](#) [00581P0075](#) [M10-10RX](#) [M10BCK](#) [60205-1](#) [604200-1](#) [60598-1-CUT-TAPE](#) [60617-1-C](#) [60873-1](#) [M14-516R/SK](#) [M14-6RSX](#) [M18-10FLX](#) [M18-8FBX](#) [M18-8R/LX](#) [M18BCK](#) [61314-6-C](#) [61-S](#) [61-SN-A](#) [62-NBM-A](#) [63-S](#) [640179-1](#) [640917-2-CUT-TAPE](#) [6501550002](#) [66107-2-C](#) [696683-1](#) [696834-1](#) [696861-1](#) [696931-1](#) [696999-1](#) [M8-516RK](#) [M86700006](#) [MA250DMFMX-A](#) [701-2007](#) [701-2307](#) [701-7761-03](#) [70F-110-32-PB](#) [718-N-A](#) [71M-187-20-NBL](#) [71M-250-32-NBL](#) [72F-187-20-NBL](#) [72M-250-32-NBL](#) [7310](#) [73F-250-32](#) [73F-250-32-NBL](#) [73F-250-32-NL](#) [F14-10C](#) [F-1M](#) [751-250](#)