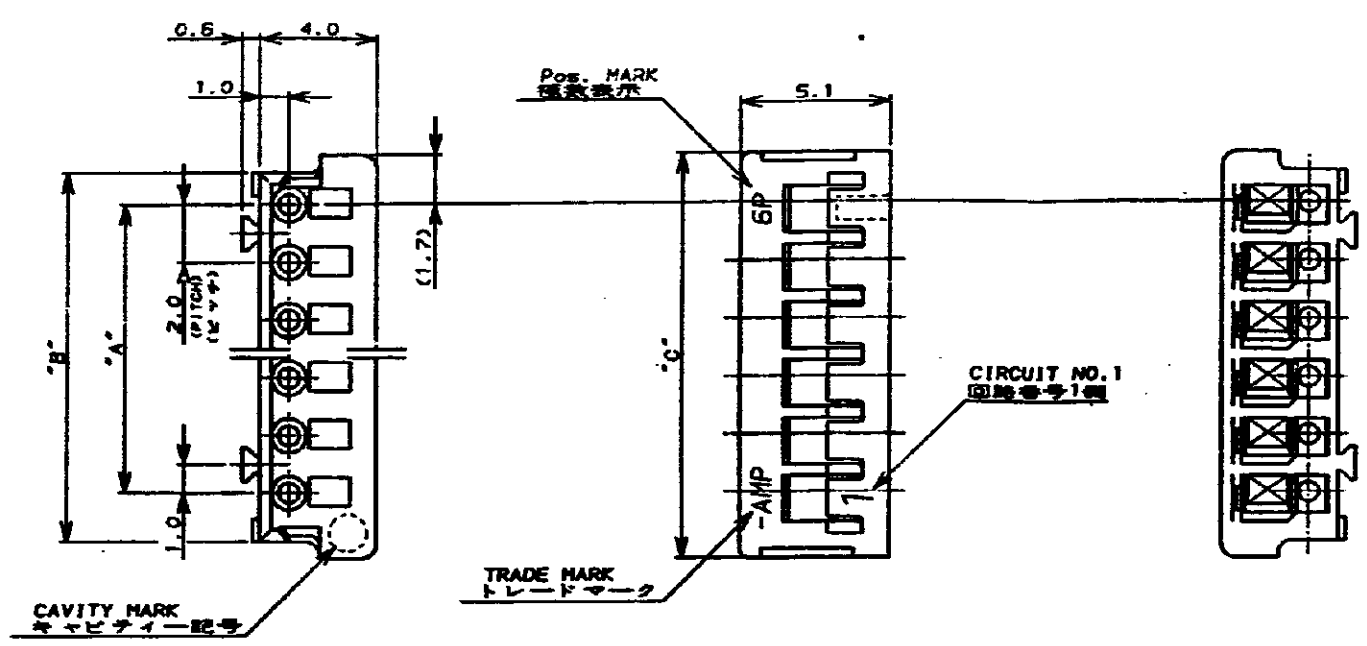


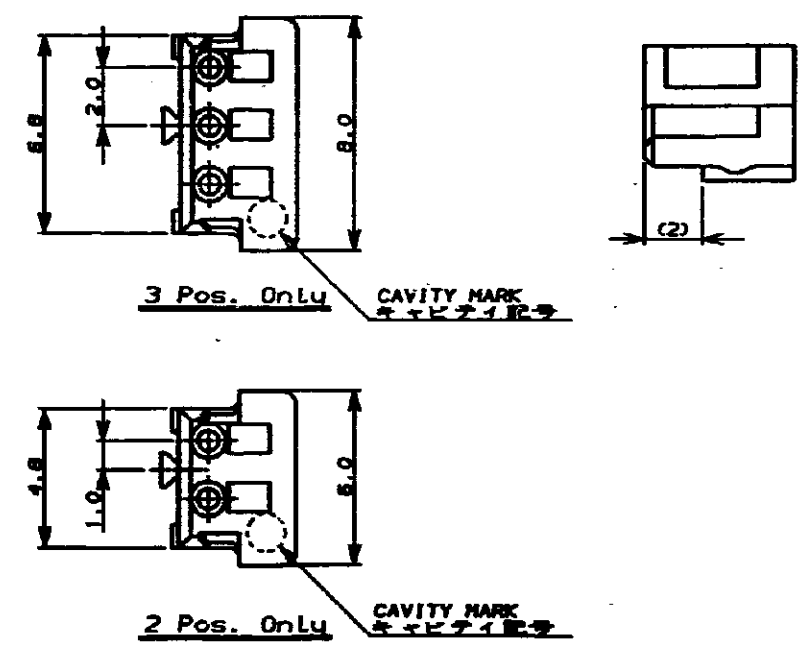
NUMBER C-175778
METRIC
3-1/2 ANGLE PROJECTION



- 注:
 1. 材料: 66ナイロン (UL94V-0)
 2. 適用製品規格: 108-5297
 3. 取付適用規格: 114-5140

- NOTES:
 1. MATERIAL: 66 NYLON (UL94V-0)
 2. PRODUCT SPEC.: 108-5297
 3. APPLICATION SPEC.: 114-5140

IMP 27.91



	7-175778-5	5-175778-5	3-175778-5	1-175778-5	15	28.0	30.8	32.0
	7- 4	5- 4	3- 4	1- 4	14	26.0	28.8	30.0
	7- 3	5- 3	3- 3	1- 3	13	24.0	26.8	28.0
	7- 2	5- 2	3- 2	1- 2	12	22.0	24.8	26.0
	7- 1	5- 1	3- 1	1- 1	11	20.0	22.8	24.0
	7- 0	5- 0	3- 0	1- 0	10	18.0	20.8	22.0
	6- 9	4- 9	2- 9		9	16.0	18.8	20.0
	6- 8	4- 8	2- 8		8	14.0	16.8	18.0
	6- 7	4- 7	2- 7		7	12.0	14.8	16.0
	6- 6	4- 6	2- 6		6	10.0	12.8	14.0
	6- 5	4- 5	2- 5		5	8.0	10.8	12.0
	6- 4	4- 4	2- 4		4	6.0	8.8	10.0
	6- 3	4- 3	2- 3		3	4.0	6.8	8.0
	6-175778-2	4-175778-2	2-175778-2	175778-2	2	2.0	4.8	6.0
	BLACK	YELLOW	BLUE	NATURAL	Pos.	A	B	C
					種類			

PRIMARY DIMS
DIMENSIONS IN MILLIMETERS. DO NOT SCALE PRINT

STE TE Connectivity

NAME 圧着タイプ リセハウジング
 CRIMP TYPE RECEPTACLE HOUSING
 (AMP CT CONNECTOR 2mm PITCH)

WIRE RANGE 0.5~1.5 (AWG -)
 INSULATION DIA 0.5~1.5
 MATERIAL NOTE 注
 FINISH

GENERAL TOLERANCE
 0mm 10 : ±0.2
 10mm 30 : ±0.25
 30mm 100 : ±0.3
 ANGLES : ±3°

SIZE LOC NUMBER
 A3 J C-175778

SCALE 5-1
 REV. D2
 SHEET 1 OF 1

D2	ECO-11-005294	RK	DR.	T. NAKAMURA	4/6 '80 DE.
LTR	REVISION RECORD	DR	CHK	S. KIKUCHI	4/8 '80 APP.

CUSTOMER DRAWING

X-ON Electronics

Largest Supplier of Electrical and Electronic Components

Click to view similar products for [Headers & Wire Housings](#) category:

Click to view products by [TE Connectivity](#) manufacturer:

Other Similar products are found below :

[95000-104TRLF](#) [10135584-644402LF](#) [DF62W-EP2022PCA](#) [95000-106TRLF](#) [DF62W-2022SCA](#) [DF62W-EP2022PC](#) [2203348](#) [DF62W-2022SC](#) [1084018](#) [1029039](#) [1084017](#) [802-10-012-10-002000](#) [1112640](#) [1112639](#) [000-34000](#) [0009482033](#) [0009507031](#) [57102-S06-03LF](#) [57202-S52-04LF](#) [PCN6-15S-2.5E](#) [0039019024](#) [58102-G61-06LF](#) [582553-1](#) [0009485154](#) [0009508121](#) [0022285053](#) [0050291907](#) [018731A](#) [LY20-4P-DT1-P1E-BR](#) [02.125.8002.8](#) [60101931](#) [60598-1 \(Cut Strip\)](#) [M1625-3R/100](#) [61062-3](#) [61082-181009](#) [636-1427](#) [638009-1](#) [641938-9](#) [641991-4](#) [644168-1](#) [647662-1](#) [65039-019ELF](#) [65817-002LF](#) [65817-015LF](#) [65863-015LF](#) [66207-023LF](#) [67016-026LF](#) [67046-001LF](#) [67095-007LF](#) [67230-005LF](#)