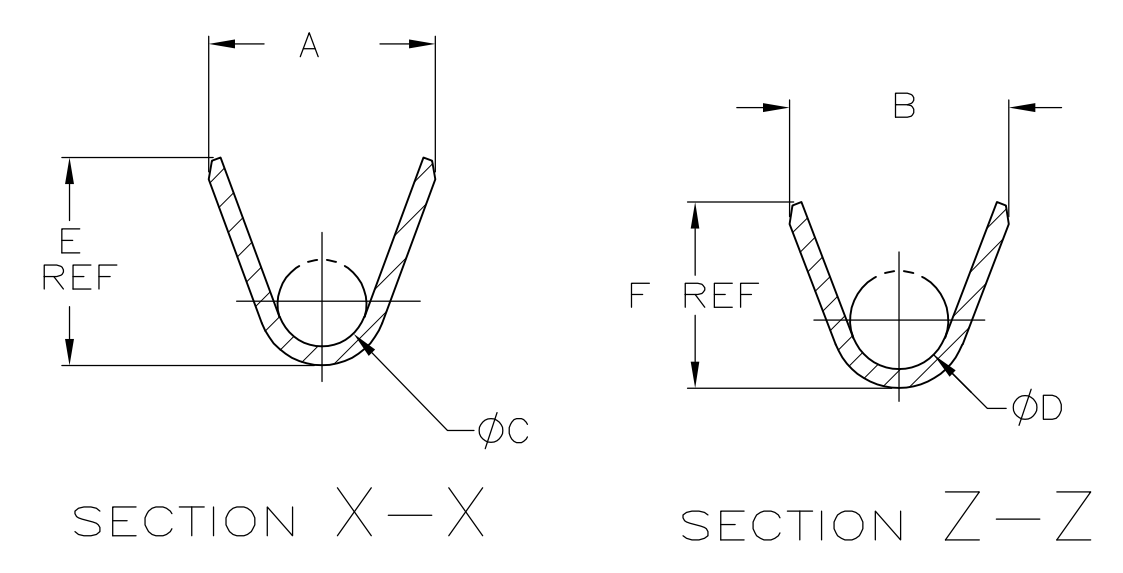
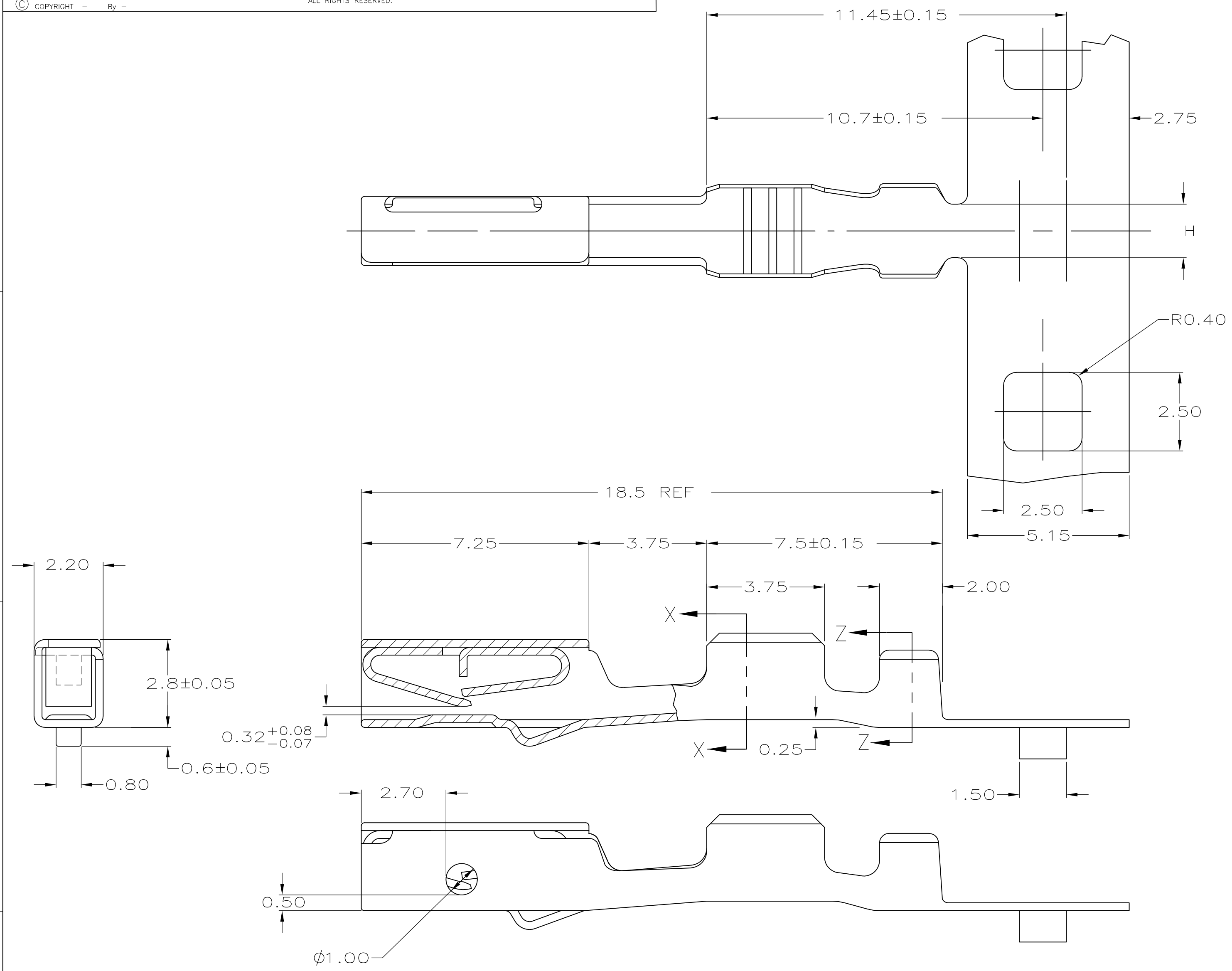


THIS DRAWING IS UNPUBLISHED. RELEASED FOR PUBLICATION
 © COPYRIGHT - By - ALL RIGHTS RESERVED.

| LOC | DIST | REVISIONS | | | | |
|-----|------|-------------|---------------------------|---------|--------|--|
| P | LTR | DESCRIPTION | DATE | DWN | APVD | |
| FX | 00 | C1 | REVISED PER ECO-11-005030 | 11MAR11 | RK HMR | |



1 MATERIAL: 0.25 THK COPPER ALLOY, PRE-PLATED WITH 0.0008 MIN THK BRIGHT TIN.

| 638187-2 REELED LEFT TO RIGHT, OFF TOP, CARRIER INSIDE | | | | | | | | | 638187-4 |
|--------------------------------------------------------|------|------|------|------|------|------|------------------|-------|-------------|
| 638187-1 REELED LEFT TO RIGHT, OFF TOP, CARRIER INSIDE | | | | | | | | | 638187-3 |
| 1.6 | 1.80 | 2.04 | 1.45 | 0.90 | 2.40 | 2.30 | 0.35 | 22 | 638187-2 |
| 1.6 | 1.80 | 2.04 | 1.45 | 0.90 | 2.40 | 2.30 | 0.34-0.36 | | |
| 1.7 | 2.46 | 2.75 | 1.30 | 1.20 | 2.90 | 3.00 | 0.50 | 18-20 | 638187-1 |
| 1.7 | 2.46 | 2.75 | 1.30 | 1.20 | 2.90 | 3.00 | 0.75 | | |
| 1.7 | 2.46 | 2.75 | 1.30 | 1.20 | 2.90 | 3.00 | 1.00 | | |
| 1.7 | 2.46 | 2.75 | 1.30 | 1.20 | 2.90 | 3.00 | -- | | |
| H | F | E | D | C | B | A | METRIC WIRE SIZE | AWG | PART NUMBER |

| | | | | |
|----------------------------------------|--|-----------------------------|---------------------------------------|--|
| THIS DRAWING IS A CONTROLLED DOCUMENT. | | DWN J MCNEAL 04-09-98 | TE Connectivity | |
| DIMENSIONS: mm | | CHK C PAUL 04-09-98 | | |
| TOLERANCES UNLESS OTHERWISE SPECIFIED: | | APVD C PAUL 04-09-98 | NAME RECEPTACLE CONTACT, DUAL BEAM | |
| 0 PLC ± - | | PRODUCT SPEC | SIZE A2 | |
| 1 PLC ± 0.2 | | APPLICATION SPEC | CAGE CODE 00779 | |
| 2 PLC ± 0.1 | | 114-6063 | DRAWING NO C=638187 | |
| 3 PLC ± - | | WEIGHT | RESTRICTED TO | |
| 4 PLC ± - | | FINISH | SCALE 4:1 | |
| ANGLES ± 5° | | 1 | SHEET 1 OF 1 | |
| MATERIAL | | CUSTOMER DRAWING | REV C1 | |

X-ON Electronics

Largest Supplier of Electrical and Electronic Components

Click to view similar products for [Automotive Connectors](#) category:

Click to view products by [TE Connectivity](#) manufacturer:

Other Similar products are found below :

[003-018-000](#) [600858](#) [60403001](#) [60993906-B](#) [60993913-B](#) [629515004020001](#) [M902-2131](#) [M902-2161](#) [M902-2344](#) [72.330.1035.1](#)
[73.353.4028.0](#) [F118010](#) [F119300-B](#) [F132210](#) [F132210-B](#) [F166900](#) [F180100](#) [F258300](#) [F258300-B](#) [F294300-B](#) [F339100](#) [F339700](#) [F358300-](#)
[B](#) [F374110](#) [F407400](#) [F412210](#) [F427600](#) [F444110](#) [F487000](#) [F495100-B](#) [F500900-B](#) [F509500B-B](#) [770444-1](#) [776880-1](#) [827153-1](#) [881735-1](#)
[8N1515-32-24P](#) [9-1326727-8](#) [9-1326729-8](#) [925467-1](#) [925474-1](#) [928905-1](#) [936398-2](#) [964562-1](#) [964562-4](#) [964731-2](#) [965051-1](#) [968782-1](#)
[GT17SA-8DS-HU](#) [GT17VS-10DP-5.2CF](#)