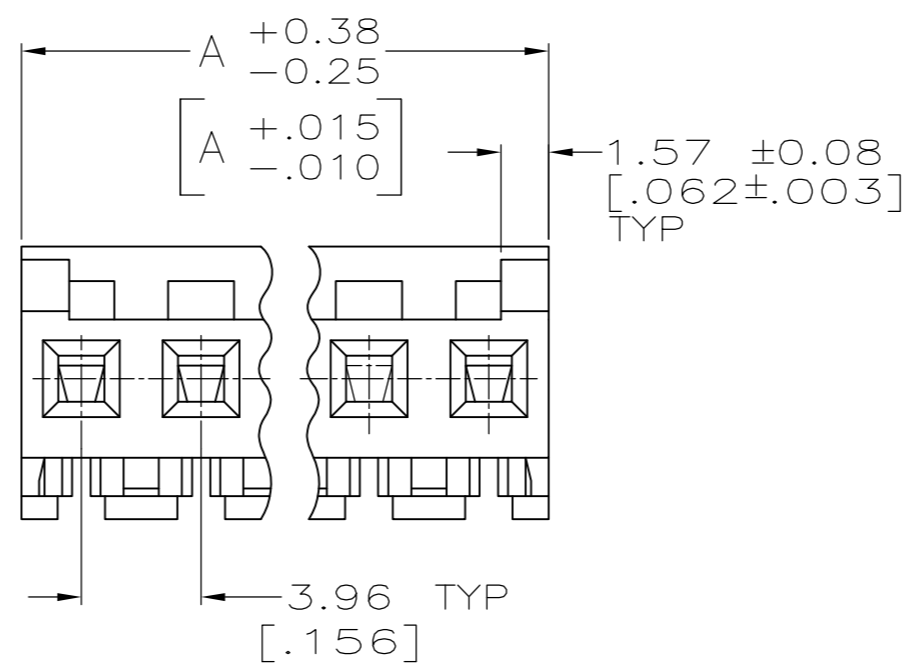
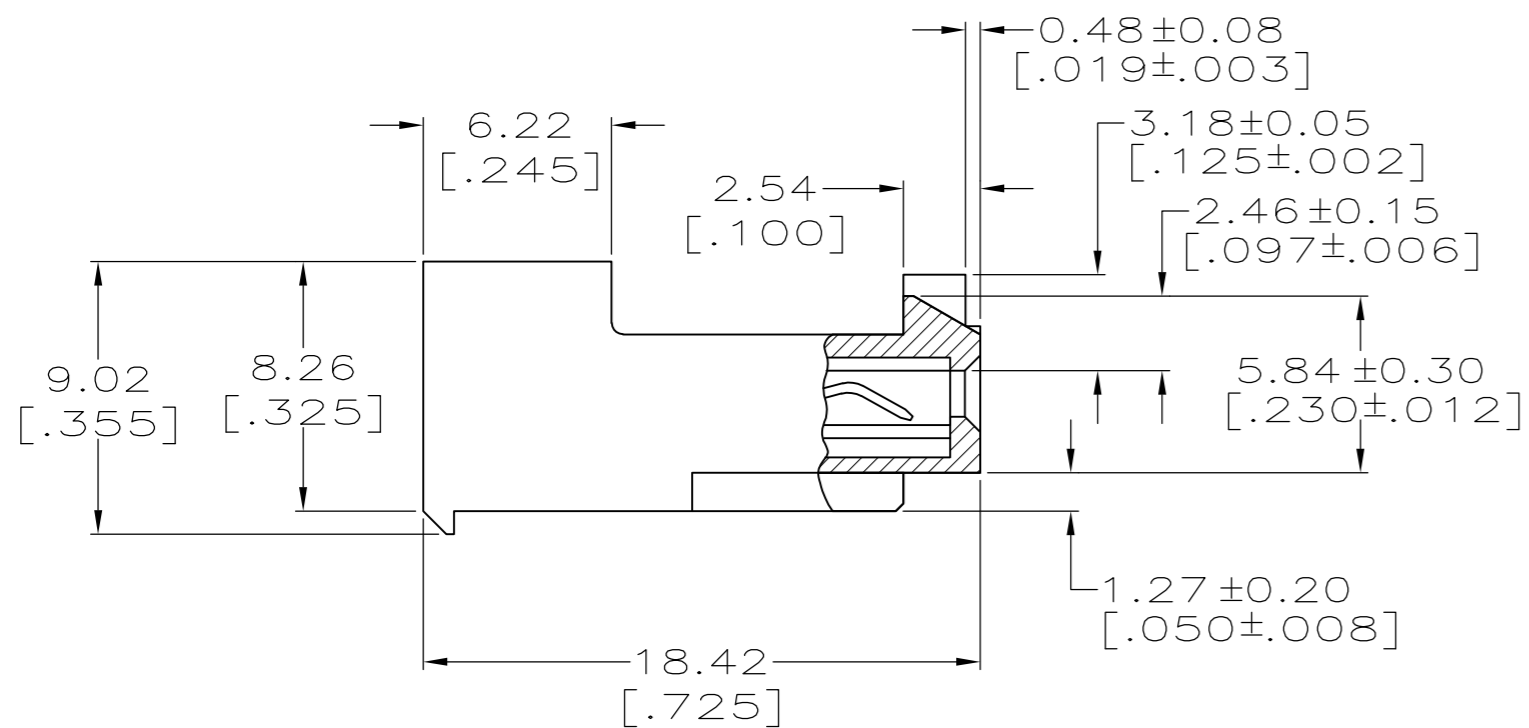
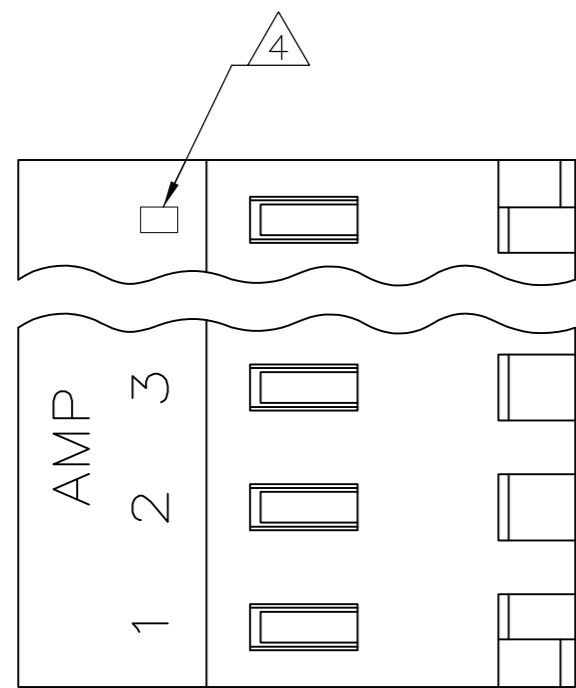


THIS DRAWING IS UNPUBLISHED. RELEASED FOR PUBLICATION  
 © COPYRIGHT - By - TE CONNECTIVITY ALL RIGHTS RESERVED.

LOC	DIST	REVISIONS					
CM	0	P	LTR	DESCRIPTION	DATE	DWN	APVD
		J2		REVISED PER ECR-15-006687	26OCT2015	NK	NL



1 MATERIAL:  
 CONNECTOR - NYLON UL94V-2 (ORANGE).  
 CONTACTS - 0.30[.012] THICK COPPER ALLOY.  
 PLATING - 0.00076[.000030] GOLD THK OR 0.00008[.000003] MIN THK GOLD FLASH OVER 0.00068[.000027] THK PALLADIUM NICKEL, PER TE CONNECTIVITY'S DISCRETION. IN CONTACT AREA. 0.00203[.000080] MIN THICKNESS MATTE TIN IN SLOT AREA FOR 641148-2 THRU 2-641148-4 OR MATTE WHISKER MITIGATED TIN IN SLOT AREA FOR 3-641148-2 THRU 5-641148-4 OVER NICKEL UNDERPLATE.

2 CONTACTS ACCEPT 18 AWG WIRE WITH 2.41[.095] MAX INSULATION DIAMETER.

3 CONTACTS MUST ACCEPT 1.14±0.03[.045±.001] SQUARE POST AND REMAIN LOCKED IN POSITION.

4 IDENTIFICATION NUMBER FOR LAST CIRCUIT MAY NOT APPEAR ON ALL ASSEMBLIES.

5 DIMENSIONS IN BRACKETS ARE IN INCHES.

6 HOUSING FEATURES ARE: CLOSED END WITH LOCKING RAMP AND POLARIZING TAB.

7 NOTE DELETED

8 NOTE DELETED.

9 OBSOLETE PARTS: OBSOLETE CIS STREAMLINING PER D.RENAUD/D.SINISI

CONTACT FINISH	DIM A	NO. OF CIRCUITS	PART NO.
TIN	47.55 [1.872]	12	4-644284-2
TIN	43.59 [1.716]	11	4-644284-1
TIN	39.62 [1.560]	10	4-644284-0
TIN	35.66 [1.404]	9	3-644284-9
TIN	31.70 [1.248]	8	3-644284-8
TIN	27.74 [1.092]	7	3-644284-7
TIN	23.77 [.936]	6	3-644284-6
TIN	19.81 [.780]	5	3-644284-5
TIN	15.85 [.624]	4	3-644284-4
TIN	11.89 [.468]	3	3-644284-3
TIN	7.92 [.312]	2	3-644284-2
OBSOLETE	47.55 [1.872]	12	<del>1-644284-2</del>
SUPERSEDED	43.59 [1.716]	11	<del>1-644284-1</del>
SUPERSEDED	39.62 [1.560]	10	<del>1-644284-0</del>
OBSOLETE	35.66 [1.404]	9	<del>644284-9</del>
SUPERSEDED	31.70 [1.248]	8	<del>644284-8</del>
SUPERSEDED	27.74 [1.092]	7	<del>644284-7</del>
OBSOLETE	23.77 [.936]	6	<del>644284-6</del>
OBSOLETE	19.81 [.780]	5	<del>644284-5</del>
SUPERSEDED	15.85 [.624]	4	<del>644284-4</del>
OBSOLETE	11.89 [.468]	3	<del>644284-3</del>
OBSOLETE	7.92 [.312]	2	<del>644284-2</del>

THIS DRAWING IS A CONTROLLED DOCUMENT. DWN B. LEWIS 2-12-91  
 CHK R. SWING 2-12-91

DIMENSIONS: mm [INCHES] TOLERANCES UNLESS OTHERWISE SPECIFIED:

0 PLC	± -
1 PLC	± -
2 PLC	± -
3 PLC	± 0.13 [.005]
4 PLC	± -
ANGLES	± -
FINISH	-

PRODUCT SPEC 108-1051  
 APPLICATION SPEC 114-1020

MATERIAL 1

WEIGHT -

CUSTOMER DRAWING

TE Connectivity  
 MTA 156 CONNECTOR ASSEMBLY, 18 AWG, STANDARD

SIZE A2 CAGE CODE 00779 DRAWING NO C=644284 RESTRICTED TO -

SCALE 4:1 SHEET 1 of 1 REV J2

## X-ON Electronics

Largest Supplier of Electrical and Electronic Components

*Click to view similar products for [Headers & Wire Housings](#) category:*

*Click to view products by [TE Connectivity](#) manufacturer:*

Other Similar products are found below :

[95000-104TRLF](#) [10135584-644402LF](#) [DF62W-EP2022PCA](#) [95000-106TRLF](#) [DF62W-2022SCA](#) [DF62W-EP2022PC](#) [2203348](#) [DF62W-2022SC](#) [1084018](#) [1029039](#) [1084017](#) [802-10-012-10-002000](#) [1112640](#) [1112639](#) [000-34000](#) [0009482033](#) [0009507031](#) [57102-S06-03LF](#) [57202-S52-04LF](#) [PCN6-15S-2.5E](#) [0039019024](#) [58102-G61-06LF](#) [582553-1](#) [0009485154](#) [0009508121](#) [0022285053](#) [0050291907](#) [018731A](#) [LY20-4P-DT1-P1E-BR](#) [02.125.8002.8](#) [60101931](#) [60598-1 \(Cut Strip\)](#) [M1625-3R/100](#) [61062-3](#) [61082-181009](#) [636-1427](#) [638009-1](#) [641938-9](#) [641991-4](#) [644168-1](#) [647662-1](#) [65039-019ELF](#) [65817-002LF](#) [65817-015LF](#) [65863-015LF](#) [66207-023LF](#) [67016-026LF](#) [67046-001LF](#) [67095-007LF](#) [67230-005LF](#)