

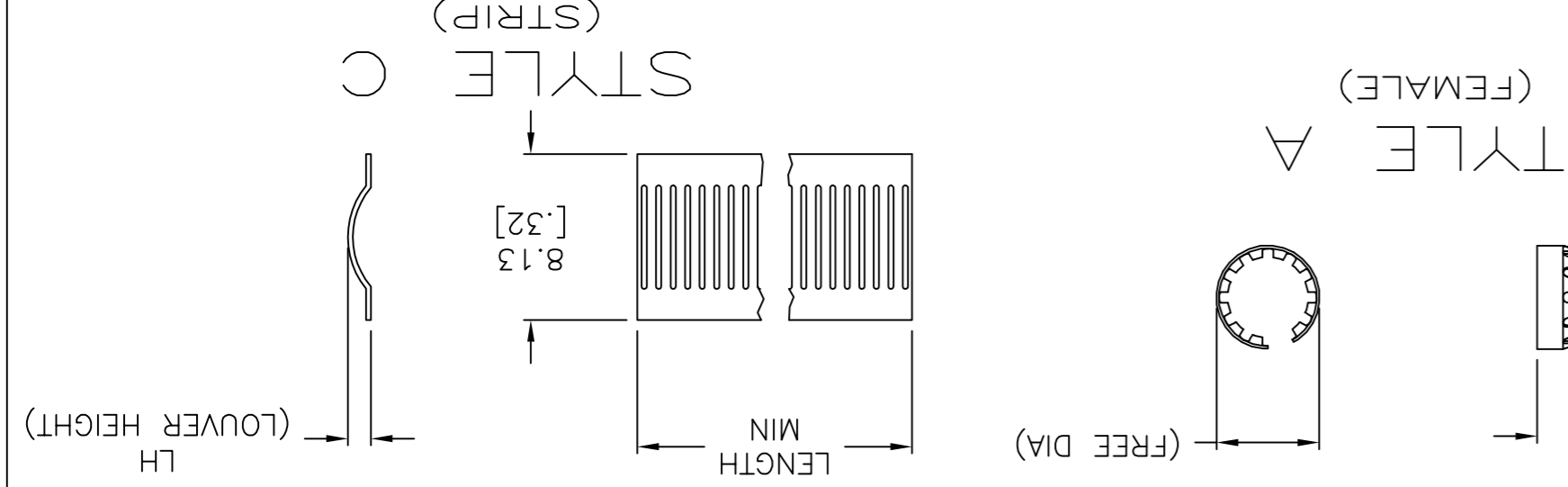
STYLE	LH	(FREE DIA)	LENGTH	MATING PIN Ø REF	PLATING (NOTE)	NUM LOUV	(NOTE) MAT'L	MAT'L THK	REF	PART NO.
A	[.030]	[.11]	--	2.03 [.080]	1-2	8	12	0.15 [.006]	04010	4-192041-4
A	[.030]	[.11]	--	2.03 [.080]	1-2	8	12	0.15 [.006]	04200	4-192041-3
A	[.030]	[.11]	--	2.03 [.080]	UNPL	8	12	0.15 [.006]	04083	4-192041-2
A	[.022]	[.09]	--	1.57 [.062]	1-2	7	12	0.15 [.006]	04137	4-192041-1
A	[.022]	[.09]	--	1.57 [.062]	UNPL	7	12	0.15 [.006]	04061	3-192041-8
A	[.016]	[.09]	--	1.57 [.062]	UNPL	7	13	0.12 [.005]	04009	3-192041-7
A	[.024]	[.09]	--	1.57 [.062]	1-2	7	12	0.12 [.005]	04147	3-192041-6
A	[.024]	[.09]	--	1.57 [.062]	1-2	7	12	0.12 [.005]	04212	3-192041-5
C	[.024]	[.09]	--	1.57 [.062]	UNPL	7	12	0.12 [.005]	04081	3-192041-4
-	[.022]	[.08]	--	1.02 [.040]	4-2	5	12	0.12 [.005]	04142	3-192041-3
A	[.022]	[.08]	--	1.02 [.040]	3-2	5	12	0.12 [.005]	04006	3-192041-2
A	[.022]	[.08]	--	1.02 [.040]	1-2	5	12	0.12 [.005]	04213	3-192041-1
A	[.022]	[.08]	--	1.02 [.040]	UNPL	5	12	0.12 [.005]	04005	3-192041-0
A	[.018]	[.06]	--	0.63 [.025]	3-2	4	12	0.12 [.005]	04004	2-192041-9
C	[.028]	[.46]	--	1-2	15	12	0.15 [.006]	04162	2-192041-6	
-	-	-	--	--	--	--	--	--	2-192041-5	2-192041-4
C	[.036]	[.37]	--	1-2	12	12	0.15 [.006]	04218	2-192041-4	
-	-	-	--	--	--	--	--	--	2-192041-3	2-192041-2
-	-	-	--	--	--	--	--	--	2-192041-2	2-192041-1
-	-	-	--	--	--	--	--	--	2-192041-1	2-192041-0
-	-	-	--	--	--	--	--	--	1-192041-9	1-192041-8
-	-	-	--	--	--	--	--	--	1-192941-8	1-192941-7
-	-	-	--	--	--	--	--	--	1-192041-7	1-192041-6
C	[.028]	[.28]	NOTE 14	3-2	UNPL	--	12	0.20 [.008]	04098	1-192041-6
C	[.028]	[.28]	NOTE 14	3-2	UNPL	--	12	0.20 [.008]	04099	1-192041-5
C	[.028]	[.28]	NOTE 14	3-2	UNPL	--	12	0.20 [.008]	04099	1-192041-4
C	[.028]	[.28]	NOTE 14	3-2	UNPL	--	12	0.15 [.006]	04002	1-192041-3
C	[.026]	[.26]	NOTE 14	1-2	UNPL	--	12	0.15 [.006]	04119	1-192041-2
C	[.028]	[.28]	NOTE 14	1-2	UNPL	--	12	0.15 [.006]	04210	1-192041-1
C	[.028]	[.28]	NOTE 14	1-2	UNPL	--	12	0.15 [.006]	04109	1-192041-0
C	[.016]	[.16]	NOTE 14	1-2	UNPL	--	13	0.12 [.005]	04211	1-192041-9
C	[.026]	[.26]	NOTE 14	3-2	UNPL	--	12	0.12 [.005]	04148	1-192041-8
C	[.026]	[.26]	NOTE 14	3-2	UNPL	--	12	0.12 [.005]	04000	1-192041-7
-	-	-	--	--	--	--	--	--	1-192041-6	1-192041-5
-	-	-	--	--	--	--	--	--	1-192041-5	1-192041-4
-	-	-	--	--	--	--	--	--	1-192041-4	1-192041-3
-	-	-	--	--	--	--	--	--	1-192041-3	1-192041-2
-	-	-	--	--	--	--	--	--	1-192041-2	1-192041-1

STYLE	LH	(FREE DIA)	LENGTH	MATING PIN Ø REF	PLATING (NOTE)	NUM LOUV	(NOTE) MAT'L	MAT'L THK	REF	PART NO.
A	[.022]	[.14]	--	2.36 [.093]	1-2	11	12	0.12 [.005]	04136	4-192041-7
A	[.022]	[.14]	--	2.36 [.093]	UNPL	11	12	0.12 [.005]	04136	4-192041-7
A	[.022]	[.14]	--	2.36 [.093]	1-2	11	12	0.12 [.005]	04164	4-192041-8
-	-	-	--	--	--	--	--	--	4-192041-9	4-192041-8
A	[.022]	[.14]	--	2.36 [.093]	3-2	11	12	0.12 [.005]	04124	5-192041-0

MATERIAL		SEE TABLE	
DIMENSIONS:		mm	
FINISH		SEE TABLE	
TOLERANCES UNLESS OTHERWISE SPECIFIED:		SEE TABLE	
APPLICATOR SPEC		SEE TABLE	
PRODUCT SPEC		SEE TABLE	
APVD		SEE TABLE	
NAME		SEE TABLE	
CHK		SEE TABLE	
J. TURNER		07-21-93	
DWG		-	

CUSTOMER DRAWING		SCALE	
WEIGHT		SEE TABLE	
SIZE		SEE TABLE	
CASE CODE		SEE TABLE	
DRAWING NO		SEE TABLE	
RESTRICTED TO		SEE TABLE	

THIS DRAWING IS A CONTROLLED DOCUMENT.



REV	DATE	DESCRIPTION	APVD
M	16NOV2017	REVISED PER ECO-17-013721	RS MZ
L	03NOV2016	REVISED PER ECO-16-015569	RS MZ
K	04NOV2015	REVISED PER ECO-15-011608	NK MZ

1 FINISH-SILVER PLATE 5.08um [200u"] THICK MIN.
2 FINISH-NICKEL PLATE 1.12um [40u"] THICK MIN.
3 FINISH-GOLD PLATE 0.25um [10u"] THICK MIN.
4 FINISH-GOLD PLATE 1.02um [40u"] THICK MIN.
5 FINISH-GOLD PLATE 1.27um [50u"] THICK MIN.
6 FINISH-NICKEL PLATE 2.54um [100u"] THICK MIN.
7 FINISH-GOLD PLATE 0.76um [30u"] THICK MIN.
8 FINISH-GOLD PLATE 0.51um [20u"] THICK MIN.
9 FINISH-NICKEL PLATE 1.27um [50u"] THICK MIN.
10 FINISH-TIN PLATE 5.08um [200u"] THICK MIN.
11 PLATING NOTES ARE TO BE INTERPRETED AS FOLLOWS,
6-8 AS 6 OVER 8.
12 MATERIAL: CDA172, Becu.
13 MATERIAL: STAINLESS STEEL.
14 PRODUCT IS SOLD BY THE FOOT.
OBsolete PARTS: OBsolete CIS STREAMLINING PER
D.RENAUD/D.SINISI

A

B

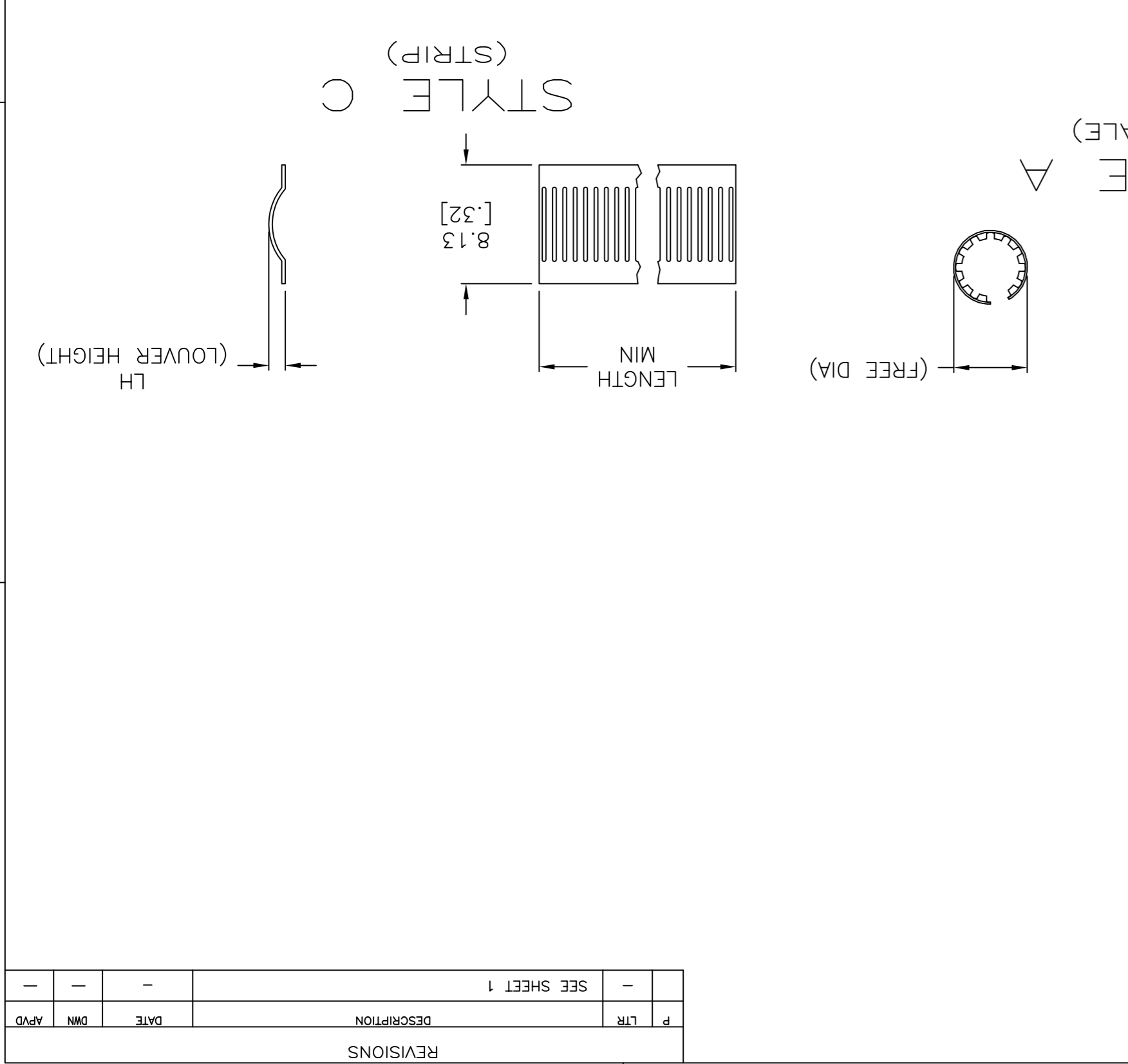
C

D

STYLE	LH	(FREE DIA)	LENGTH	MATING PIN Ø REF	PLATING (NOTE)	LOUV NUM (NOTE)	MAT'L THK	REF	PART NO.
A	[.026]	[.23]	--	5.00[.197]	1-2	19	12	0.20[.008]	04170-9-192041-9
A	[.026]	[.23]	--	5.00[.197]	UNPL	19	12	0.20[.008]	04169-9-192041-8
A	[.024]	[.23]	--	5.00[.197]	3-2	19	12	0.15[.006]	04037-9-192041-7
A	[.024]	[.23]	--	5.00[.197]	UNPL	19	12	0.15[.006]	04038-9-192041-6
A	[.024]	[.21]	--	4.75[.187]	3-2	18	12	0.15[.006]	04035-9-192041-4
A	[.030]	[.21]	--	4.39[.173]	UNPL	17	12	0.20[.008]	04080-9-192041-2
A	[.034]	[.21]	--	4.39[.173]	UNPL	17	12	0.15[.006]	04191-9-192041-1
A	[.026]	[.21]	--	4.39[.173]	1-2	17	12	0.15[.006]	04157-8-192041-8
A	[.026]	[.21]	--	4.39[.173]	3-2	17	12	0.15[.006]	04030-8-192041-9
A	[.016]	[.25]	--	4.39[.173]	UNPL	17	13	0.12[.005]	04064-8-192041-6
A	[.032]	[.20]	--	4.00[.157]	5-2	15	12	0.20[.008]	04126-8-192041-5
A	[.032]	[.20]	--	4.00[.157]	UNPL	15	12	0.20[.008]	04028-8-192041-4
A	[.032]	[.20]	--	4.00[.157]	1-2	15	12	0.20[.008]	04192-8-192041-3
A	[.032]	[.20]	--	4.00[.157]	UNPL	15	12	0.20[.008]	04117-8-192041-2
A	[.032]	[.19]	--	4.00[.157]	6	15	12	0.15[.006]	04129-8-192041-1
A	[.032]	[.19]	--	4.00[.157]	5-2	15	12	0.15[.006]	04111-8-192041-0
A	[.032]	[.19]	--	4.00[.157]	3-2	15	12	0.15[.006]	04027-7-192041-8
A	[.032]	[.19]	--	4.00[.157]	UNPL	15	12	0.15[.006]	04024-6-192041-9
A	[.028]	[.17]	--	3.17[.125]	1-2	13	12	0.15[.006]	04118-6-192041-8
A	[.028]	[.17]	--	3.17[.125]	UNPL	13	12	0.15[.006]	04078-6-192041-7
A	[.028]	[.18]	--	3.17[.125]	UNPL	13	13	0.12[.005]	04123-6-192041-6
A	[.022]	[.16]	--	3.17[.125]	3-2	13	12	0.12[.005]	04023-6-192041-5
A	[.022]	[.16]	--	3.17[.125]	UNPL	13	12	0.12[.005]	04139-6-192041-3
A	[.022]	[.16]	--	3.17[.125]	10	13	12	0.12[.005]	04138-6-192041-4
A	[.026]	[.15]	--	3.00[.118]	3-2	12	12	0.15[.006]	04020-6-192041-1
A	[.026]	[.15]	--	3.00[.118]	UNPL	12	12	0.15[.006]	04019-6-192041-0
A	[.026]	[.14]	--	2.54[.100]	3-2	11	12	0.15[.006]	04017-5-192041-9
A	[.026]	[.14]	--	2.54[.100]	UNPL	11	12	0.15[.006]	04110-5-192041-8
A	[.026]	[.14]	--	2.54[.100]	10	11	12	0.15[.006]	04113-5-192041-7
A	[.026]	[.14]	--	2.54[.100]	3-2	11	13	0.12[.005]	04188-5-192041-5
A	[.016]	[.16]	--	2.36[.093]	6	11	13	0.12[.005]	04144-5-192041-4
A	[.016]	[.16]	--	2.36[.093]	UNPL	11	13	0.12[.005]	04097-5-192041-3
A	[.016]	[.16]	--	2.36[.093]	5-2	11	12	0.12[.005]	04145-5-192041-2
A	[.022]	[.14]	--	2.36[.093]	4-9	11	12	0.12[.005]	04180-5-192041-1

MATERIAL SEE TABLE		DIMENSIONS: mm	
FINISH ANGLES 4 PL ± 3 PL ± 2 PL ± 0.25 [0.010] 1 PL ± 0 PL ±		TOLERANCES UNLESS OTHERWISE SPECIFIED:	
WEIGHT		APVD	
APPLICATION SPEC		NAME	
PRODUCT SPEC		CHK	
DRAWING NO		J. TURNER	
CASE CODE		07-21-93	
DRAWING NO		DWN	
RESTRICTED TO		DMN	
SCALE 1:1		SHEET 2 OF 2	
REV M		REV M	

CUSTOMER DRAWING		THIS DRAWING IS A CONTROLLED DOCUMENT.	
STE		TE Connectivity	
CONTACT BAND, FEMALE		APVD	
DRAWING NO		NAME	
CASE CODE		CHK	
DRAWING NO		J. TURNER	
CASE CODE		07-21-93	
DRAWING NO		DWN	
RESTRICTED TO		DMN	
SCALE 1:1		SHEET 2 OF 2	
REV M		REV M	



X-ON Electronics

Largest Supplier of Electrical and Electronic Components

Click to view similar products for [Heavy Duty Power Connectors](#) category:

Click to view products by [TE Connectivity](#) manufacturer:

Other Similar products are found below :

[1424439](#) [1424438](#) [09330062652](#) [2-8675P1](#) [605601-1](#) [6340G1](#) [6341G1](#) [6360G1](#) [6373G1](#) [6374g2](#) [6396G1](#) [647757-1](#) [66394-4](#) [6643411-1](#)
[6646058-2](#) [6646137-1](#) [6646138-1](#) [6646348-1](#) [6646479-1](#) [6646608-1](#) [6646786-1](#) [6646940-1](#) [6651091-1](#) [6651525-1](#) [6651529-1](#) [6651778-1](#)
[6651788-1](#) [696465-1](#) [696475-1](#) [73000005059](#) [73000005349](#) [73000005642](#) [73080255059](#) [73080965046](#) [765-15-0080A](#) [765-16-0080B](#)
[789.700-44](#) [789.700-54](#) [80-1010](#) [80-9](#) [827381-1](#) [829992-1](#) [902-77-02113](#) [PL00U-301-10D10](#) [PM103MOOLOO](#) [PM16S1620S32-50](#)
[PM212MOOLOO](#) [PM309FOOLOO](#) [PM324FOOLCH](#) [PMHPAF11S03](#)