

A

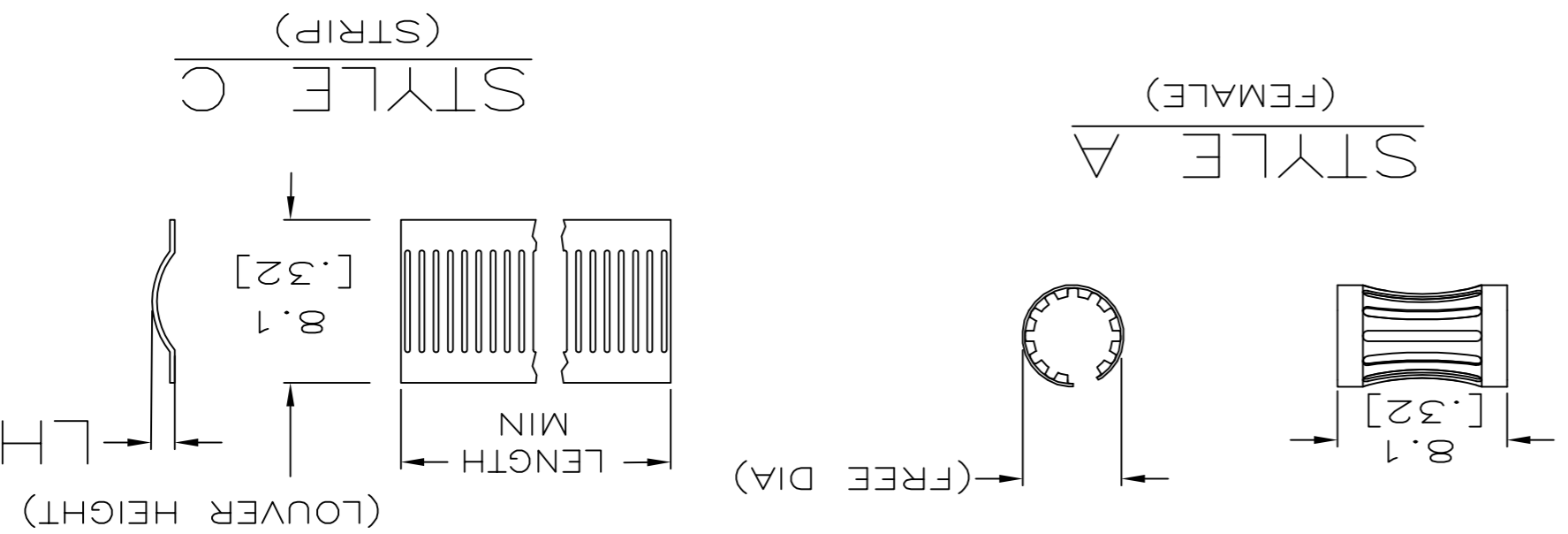
B

C

D

STYLE	(FREE DIA)	LH	LENGTH	MAT'L (NOTE)	MATING PIN Ø REF	PLATING NUM (NOTE NO.)	MAT'L THK	REF	PART NUMBER
A	[.46]	[.028]	--	12	9.5 [.375]	6	0.18 [.007]	04121	5-192043-0
A	[.46]	[.028]	--	12	9.5 [.375]	1-2	0.18 [.007]	04128	4-192043-9
A	[.46]	[.028]	--	12	9.5 [.375]	UNPL	0.18 [.007]	04120	4-192043-8
A	[.55]	[.024]	--	12	9.5 [.375]	6	0.15 [.006]	04108	4-192043-7
A	[.60]	[.028]	--	12	9.5 [.375]	3-2	0.15 [.006]	--	4-192043-6
A	[.55]	[.024]	--	12	9.5 [.375]	3-2	0.15 [.006]	04053	4-192043-5
A	[.53]	[.024]	--	12	9.5 [.375]	1-2	0.15 [.006]	04067	4-192043-4
A	[.53]	[.024]	--	12	9.5 [.375]	1-2	0.15 [.006]	04092	4-192043-3
SUPERSEDED BY 4-192043-1									
A	[.55]	[.024]	--	12	9.5 [.375]	UNPL	0.15 [.006]	04071	4-192043-1
A	[.55]	[.026]	--	12	9.5 [.375]	5-2	0.12 [.005]	38	4-192043-0
A	[.55]	[.026]	--	13	9.5 [.375]	1-2	0.12 [.005]	04174	3-192043-9
A	[.55]	[.026]	--	13	9.5 [.375]	UNPL	0.12 [.005]	--	3-192043-8
A	[.54]	[.026]	--	12	9.1 [.359]	3-2	0.18 [.007]	04204	3-192043-7
A	[.54]	[.026]	--	12	9.1 [.359]	1-2	0.18 [.007]	04184	3-192043-6
A	[.54]	[.026]	--	12	9.1 [.359]	UNPL	0.18 [.007]	04183	3-192043-5
A	[.54]	[.026]	--	12	8.9 [.359]	3-2	0.15 [.006]	04178	3-192043-4
A	[.54]	[.026]	--	12	8 [.315]	3-2	0.18 [.007]	04177	3-192043-3
A	[.54]	[.026]	--	12	8 [.315]	1-2	0.18 [.007]	04206	3-192043-1
A	[.38]	[.026]	--	12	8 [.315]	UNPL	0.18 [.007]	04185	3-192043-0
A	[.43]	[.024]	--	12	8 [.315]	3-2	0.15 [.006]	--	2-192043-9
A	[.40]	[.024]	--	12	8 [.315]	1-2	0.15 [.006]	--	2-192043-8
A	[.43]	[.024]	--	12	8 [.315]	1-2	0.15 [.006]	04076	2-192043-7
A	[.43]	[.024]	--	12	8 [.315]	UNPL	0.15 [.006]	04052	2-192043-6
A	[.40]	[.026]	--	13	7.9 [.312]	UNPL	0.12 [.005]	04079	2-192043-5
A	[.45]	[.024]	--	12	7.5 [.296]	1-2	0.18 [.007]	04189	2-192043-4
A	[.45]	[.024]	--	12	7.49 [.295]	3-2	0.15 [.006]	04051	2-192043-3
A	[.45]	[.024]	--	12	7.44 [.293]	3-2	0.12 [.005]	04050	2-192043-2
A	[.45]	[.024]	--	12	7.14 [.281]	3-2	0.20 [.008]	04049	2-192043-1
A	[.45]	[.024]	--	12	7.1 [.280]	3-2	0.15 [.006]	04106	2-192043-0
A	[.45]	[.024]	--	12	7.1 [.280]	UNPL	0.15 [.006]	04199	1-192043-9
A	[.45]	[.024]	--	12	7 [.276]	3-2	0.12 [.005]	04047	1-192043-8
A	[.45]	[.024]	--	12	6.45 [.254]	7-2	0.15 [.006]	04065	1-192043-7
A	[.35]	[.024]	--	12	6.45 [.254]	3-2	0.15 [.006]	04075	1-192043-6
A	[.35]	[.024]	--	12	6.45 [.254]	1-2	0.15 [.006]	04086	1-192043-5
A	[.35]	[.024]	--	12	6.45 [.254]	UNPL	0.15 [.006]	04046	1-192043-4
A	[.50]	[.026]	--	13	6.45 [.254]	UNPL	0.12 [.005]	04093	1-192043-3
A	[.29]	[.016]	--	12	6.35 [.250]	UNPL	0.12 [.005]	04082	192043-9
A	[.28]	[.024]	--	12	6 [.237]	3-2	0.15 [.006]	04041	192043-8
A	[.28]	[.024]	--	12	6 [.237]	UNPL	0.15 [.006]	04042	192043-7
A	[.28]	[.024]	--	12	5.54 [.218]	1-2	0.15 [.006]	04146	192043-6
A	[.28]	[.024]	--	12	5.54 [.218]	UNPL	0.15 [.006]	04143	192043-5
A	[.27]	[.024]	--	12	5.5 [.217]	3-2	0.20 [.008]	04040	192043-4
A	[.27]	[.024]	--	12	5.5 [.217]	3-2	0.15 [.006]	04105	192043-3
A	[.26]	[.024]	--	12	5 [.197]	3-2	0.15 [.006]	04215	192043-2
A	[.26]	[.024]	--	12	5 [.197]	UNPL	0.15 [.006]	04216	192043-1

1 FINISH-SILVER PLATE 200 INCH THICK MIN.
 2 FINISH-NICKEL PLATE 40 INCH THICK MIN.
 3 FINISH-GOLD PLATE 10 INCH THICK MIN.
 4 FINISH
 5 FINISH-GOLD PLATE 40 INCH THICK MIN.
 6 FINISH-TIN PLATE 300 INCH THICK MIN.
 7 FINISH-GOLD PLATE 50 INCH THICK MIN.
 8 FINISH-NICKEL PLATE 100 INCH THICK MIN.
 9 FINISH-PREPLETE
 10
 11 PLATING NOTES ARE TO BE INTERPRETED AS FOLLOWS,
 6-8 AS 6 OVER 8.
 12 MATERIAL-CD172, Becu.
 13 MATERIAL-STAINLESS STEEL
 14 PRODUCT IS SOLD BY THE FOOT.
 15 OBSOLETE (PENDING).
 16 MATERIAL: ELGILOY.
 17 PRELIMINARY PART NUMBER.
 18 FINISH: COPPER PLATE 10 INCH THICK MIN.
 19 OBSOLETE PARTS: OBSOLETE CIS STREAMLINING PER D.RENAUD/D.SINISI



MATERIAL		FINISH		DIMENSIONS:	
-		-		mm(INCHES)	
TOLERANCES UNLESS OTHERWISE SPECIFIED:		TOLERANCES UNLESS OTHERWISE SPECIFIED:		TOLERANCES UNLESS OTHERWISE SPECIFIED:	
0 PLC ±	1 PLC ±	2 PLC ±	3 PLC ±	4 PLC ±	ANGLES ±
SEE TABLE					
CUSTOMER DRAWING					
APVD: RA JAYNE 09-21-91		CHK: J. TURNER 07-21-93		NAME: -	
DWN: -		APVD: -		PRODUCT SPEC: -	
APPLICATOR SPEC: -		APPLICATOR SPEC: -		APPLICATOR SPEC: -	
WEIGHT: -		WEIGHT: -		WEIGHT: -	
SIZE: A2		CASE CODE: 00779		DRAWING NO: 192043	
RESTRICTED TO: -		SCALE: 1:1		SHEET: 1 OF 2	
REV: -		REV: -		REV: -	

A

B

C

D

192043

REVISIONS	DATE	DESCRIPTION	APVD
1	17JAN2018	RS MZ	REVISD PER ECO-18-000435
2	04NOV2015	NK MZ	REVISD PER ECO-15-011608

THIS DRAWING IS A CONTROLLED DOCUMENT. RA JAYNE 09-21-91 CHK J. TURNER 07-21-93

STE TE Connectivity

CONTACT BAND, FEMALE

RESTRICTED TO

APVD: -

NAME: -

PRODUCT SPEC: -

APPLICATION SPEC: -

WEIGHT: -

SIZE: A2

CAGE CODE: 00779

DRAWING NO: 192043

SCALE: 1:1

SHEET: 2 OF 2

REV: W

MATERIAL: -

DIMENSIONS: mm [INCHES]

TOLERANCES UNLESS OTHERWISE SPECIFIED:

0 PLC ± -

1 PLC ± -

2 PLC ± 0.25 [0.010]

3 PLC ± -

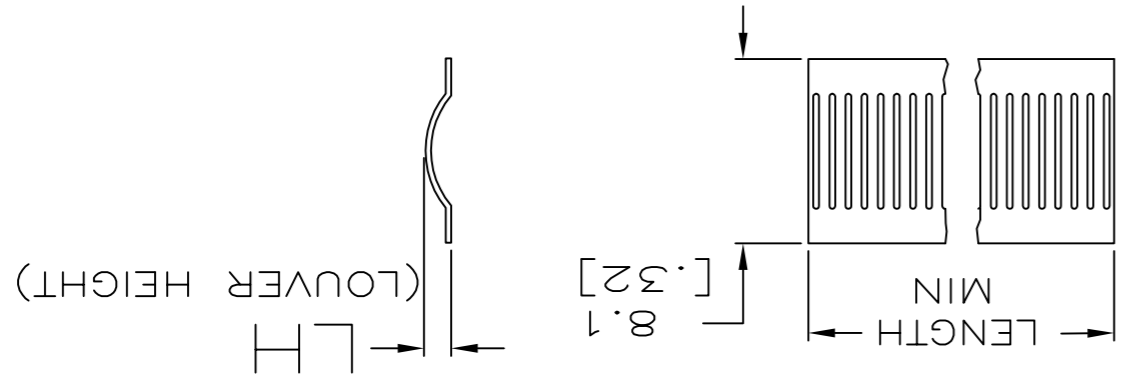
4 PLC ± -

FINISH: -

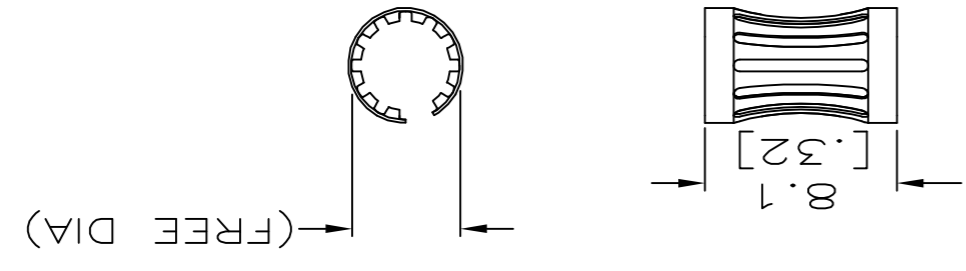
SEE TABLE

STYLE	(FREE DIA)	LH	LENGTH	(NOTE) MATL	(NOTE) MATING PIN Ø REF	(NOTE) PLATING NUM	LOUV	MAT'L THK	REF	PART NUMBER
A	[.09]	[.024]	--	12	1.57 [.062]	3-2	7	0.12 [.005]	--	9-192043-9
A	[.21]	[.026]	--	12	4.39 [.173]	3-18	17	0.15 [.006]	--	9-192043-8
A	[.17]	[.026]	--	16	3.17 [.125]	3-2	13	0.12 [.005]	--	9-192043-7
A	[1.00]	[.026]	--	12	18.4 [.725]	1-2	73	0.15 [.006]	--	9-192043-6
C	--	[.038]	NOTE 14	12	--	--	2,9	0.15 [.006]	--	9-192043-5
A	[.16]	[.026]	--	12	3.2 [.125]	3-2	11	0.15 [.006]	--	9-192043-4
A	[.21]	[.026]	--	12	3.98 [.157]	1-2	14	0.15 [.006]	--	9-192043-3
A	[.21]	[.026]	--	12	3.98 [.157]	1-2	14	0.15 [.006]	--	9-192043-2
C	--	[.016]	NOTE 14	12	--	--	--	0.12 [.005]	--	9-192043-1
A	[.17]	[.028]	--	12	3.2 [.125]	7-2	13	0.15 [.006]	--	8-192043-0
A	[.65]	[.024]	--	12	15.3 [.602]	UNPL	60	0.15 [.006]	04224	7-192043-9
C	--	[.036]	NOTE 14	12	--	--	--	0.15 [.006]	--	7-192043-8
A	[.16]	[.026]	--	12	3.17 [.125]	UNPL	11	0.15 [.006]	04229	7-192043-7
A	[.21]	[.024]	--	12	3.98 [.157]	1-2	15	0.15 [.006]	04230	7-192043-6
A	[.06]	[.018]	--	12	.6 [.025]	UNPL	4	0.12 [.005]	04225	7-192043-5
A	[.16]	[.026]	--	12	3.2 [.125]	8	11	0.15 [.006]	04227	7-192043-4
C	--	[.026]	NOTE 14	12	--	--	--	0.12 [.005]	04001	7-192043-3
A	[.16]	[.026]	--	12	3.2 [.125]	1-2	11	0.15 [.006]	04228	7-192043-2
C	[.16]	[.036]	--	12	.37	UNPL	12	0.15 [.006]	04221	7-192043-1
A	--	--	--	--	--	--	--	--	--	7-192043-0
A	--	--	--	12	25.4 [1.00]	7-2	--	0.20 [.008]	04058	6-192043-9
A	--	--	--	12	18 [.709]	7-2	--	0.20 [.008]	04056	6-192043-8
A	[.65]	[.024]	--	12	15.3 [.602]	7-2	60	0.15 [.006]	04074	6-192043-7
A	[.72]	[.024]	--	12	12 [.472]	8	48	0.20 [.008]	04172	6-192043-6
A	[.72]	[.024]	--	12	12 [.472]	3-2	48	0.20 [.008]	04090	6-192043-5
A	[.72]	[.024]	--	12	12 [.472]	1-2	48	0.20 [.008]	04095	6-192043-4
A	[.72]	[.024]	--	12	12 [.472]	UNPL	48	0.20 [.008]	04096	6-192043-3
A	--	--	--	12	12 [.472]	3-2	48	0.15 [.006]	04055	6-192043-2
A	--	--	--	12	12 [.472]	1-2	48	0.15 [.006]	04091	6-192043-1
A	[.58]	[.024]	--	12	11.1 [.439]	3-2	44	0.20 [.008]	04205	6-192043-0
A	[.58]	[.024]	--	12	11.1 [.439]	1-2	44	0.20 [.008]	04201	5-192043-9
A	[.57]	[.024]	--	12	10.4 [.410]	3-2	40	0.20 [.008]	04154	5-192043-8
A	[.50]	[.024]	--	12	10.4 [.408]	UNPL	40	0.15 [.006]	04187	5-192043-7
A	[.50]	[.024]	--	12	10.4 [.408]	1-2	38	0.20 [.008]	04115	5-192043-6
A	[.50]	[.024]	--	12	9.5 [.375]	3-2	38	0.20 [.008]	04176	5-193043-4
A	[.50]	[.024]	--	12	9.5 [.375]	UNPL	38	0.20 [.008]	04176	5-193043-4
A	[.45]	[.030]	--	12	9.5 [.375]	3-2	38	0.18 [.007]	04209	5-192043-3
A	[.45]	[.030]	--	12	9.5 [.375]	6	38	0.18 [.007]	04207	5-192043-2
A	[.45]	[.030]	--	12	9.5 [.375]	UNPL	38	0.18 [.007]	04208	5-192043-1

STYLE C (STRIP)



STYLE A (FEMALE)



REV	DATE	DESCRIPTION	APVD
-	-	SEE SHEET 1	-

REVISIONS

THIS DRAWING IS UNPUBLISHED. RELEASED FOR PUBLICATION. ALL RIGHTS RESERVED. - - -

A

A

B

B

C

C

D

D

192043

X-ON Electronics

Largest Supplier of Electrical and Electronic Components

Click to view similar products for [Heavy Duty Power Connectors](#) category:

Click to view products by [TE Connectivity](#) manufacturer:

Other Similar products are found below :

[1424439](#) [1424438](#) [09330062652](#) [2-8675P1](#) [605601-1](#) [6340G1](#) [6341G1](#) [6360G1](#) [6373G1](#) [6374g2](#) [6396G1](#) [647757-1](#) [66394-4](#) [6643411-1](#)
[6646058-2](#) [6646137-1](#) [6646138-1](#) [6646348-1](#) [6646479-1](#) [6646608-1](#) [6646786-1](#) [6646940-1](#) [6651091-1](#) [6651525-1](#) [6651529-1](#) [6651778-1](#)
[6651788-1](#) [696465-1](#) [696475-1](#) [73000005059](#) [73000005349](#) [73000005642](#) [73080255059](#) [73080965046](#) [765-15-0080A](#) [765-16-0080B](#)
[789.700-44](#) [789.700-54](#) [80-1010](#) [80-9](#) [827381-1](#) [829992-1](#) [902-77-02113](#) [PL00U-301-10D10](#) [PM103MOOLOO](#) [PM16S1620S32-50](#)
[PM212MOOLOO](#) [PM309FOOLOO](#) [PM324FOOLCH](#) [PMHPAF11S03](#)