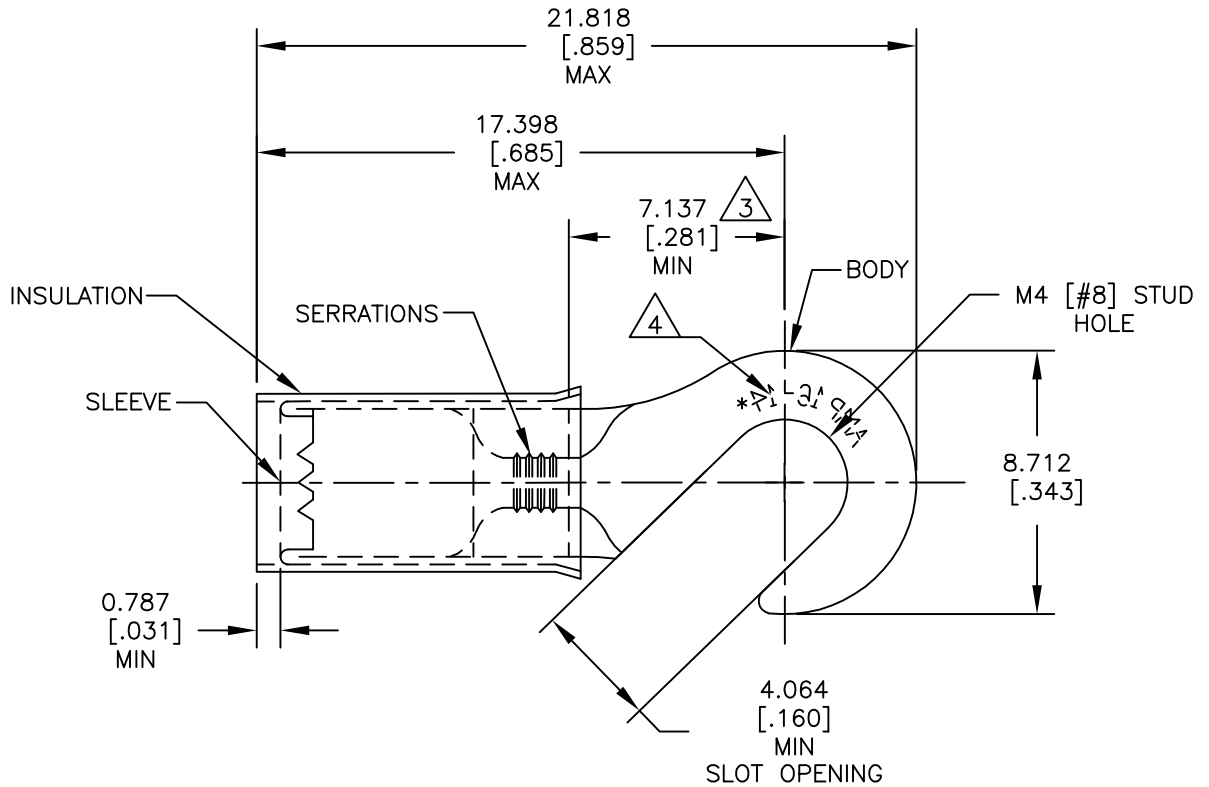


REVISIONS				
P	LTR	DESCRIPTION	DATE	APVD
	F1	REDRAWN PER ECO-17-007400	15DEC2017	RS DR

AMP WIRE RANGE	Listed FILE E13288	LR7189 Certified
16-14 AWG SOLID OR STRANDED	16-14 AWG SOLID OR STRANDED	16-14 AWG SOLID OR STRANDED



1 FOR $\phi 2.921[\phi.115]$ TO $\phi 4.318[\phi.170]$ WIRE INSULATION.

2 BODY MATERIAL THICKNESS: $0.787 \pm 0.051[.031 \pm .002]$

3 APPLIES FROM EDGE OF METAL WIRE BARREL TO CENTER OF STUD HOLE.

4 STAMP AMP 16-14* APPROX AS SHOWN.

5 MATERIAL:
BODY & SLEEVE: COPPER PER ASTM B152
INSULATION: NYLON

6 FINISH:
BODY & SLEEVE: TIN PLATE PER ASTM B545
INSULATION: COLOR-BLUE.

5000	ON TAPE	2-320306-1
1000	LOOSE PIECE	320306
QTY	PACKAGE TYPE	PART NO

RELEASED FOR PUBLICATION

ALL RIGHTS RESERVED.

THIS DRAWING IS UNPUBLISHED.

© COPYRIGHT - TE Connectivity

DIMENSIONS: mm [INCHES]	DWN RAVI S	15DEC2017	MATERIAL	5	FINISH	6
	CHK ROHDE DANIEL F	15DEC2017	TE Connectivity			
TOLERANCES UNLESS OTHERWISE SPECIFIED:	APVD ROHDE DANIEL F	15DEC2017				
0 PLC ± -	PRODUCT SPEC	UL 486 A-B	NAME	WIRE TERMINAL,		
1 PLC ± -	APPLICATION SPEC	114-2157	SIZE	CAGE CODE	DRAWING NO	RESTRICTED TO
2 PLC ± -	WEIGHT	-	A4	00779	320306	-
3 PLC ± 0.127[.005]	CUSTOMER DRAWING					
4 PLC ± -	SCALE		4:1		SHEET 1 OF 1	
ANGLES ± 5°	REV		F1			

X-ON Electronics

Largest Supplier of Electrical and Electronic Components

Click to view similar products for [Terminals](#) category:

Click to view products by [TE Connectivity](#) manufacturer:

Other Similar products are found below :

[HT-13-10](#) [71M-250-32-NB](#) [01-2065-1-0216](#) [00581P0075](#) [M10-10RX](#) [M10BCK](#) [60205-1](#) [604200-1](#) [60598-1-CUT-TAPE](#) [60617-1-C](#) [60873-1](#) [M14-516R/SK](#) [M14-6RSX](#) [M18-10FLX](#) [M18-8FBX](#) [M18-8R/LX](#) [M18BCK](#) [61314-6-C](#) [61-S](#) [61-SN-A](#) [62-NBM-A](#) [63-S](#) [640179-1](#) [640917-2-CUT-TAPE](#) [6501550002](#) [66107-2-C](#) [696683-1](#) [696834-1](#) [696861-1](#) [696931-1](#) [696999-1](#) [M8-516RK](#) [M86700006](#) [MA250DMFMX-A](#) [701-2007](#) [701-2307](#) [701-7761-03](#) [70F-110-32-PB](#) [718-N-A](#) [71M-187-20-NBL](#) [71M-250-32-NBL](#) [72F-187-20-NBL](#) [72M-250-32-NBL](#) [7310](#) [73F-250-32](#) [73F-250-32-NBL](#) [73F-250-32-NL](#) [F14-10C](#) [F-1M](#) [751-250](#)