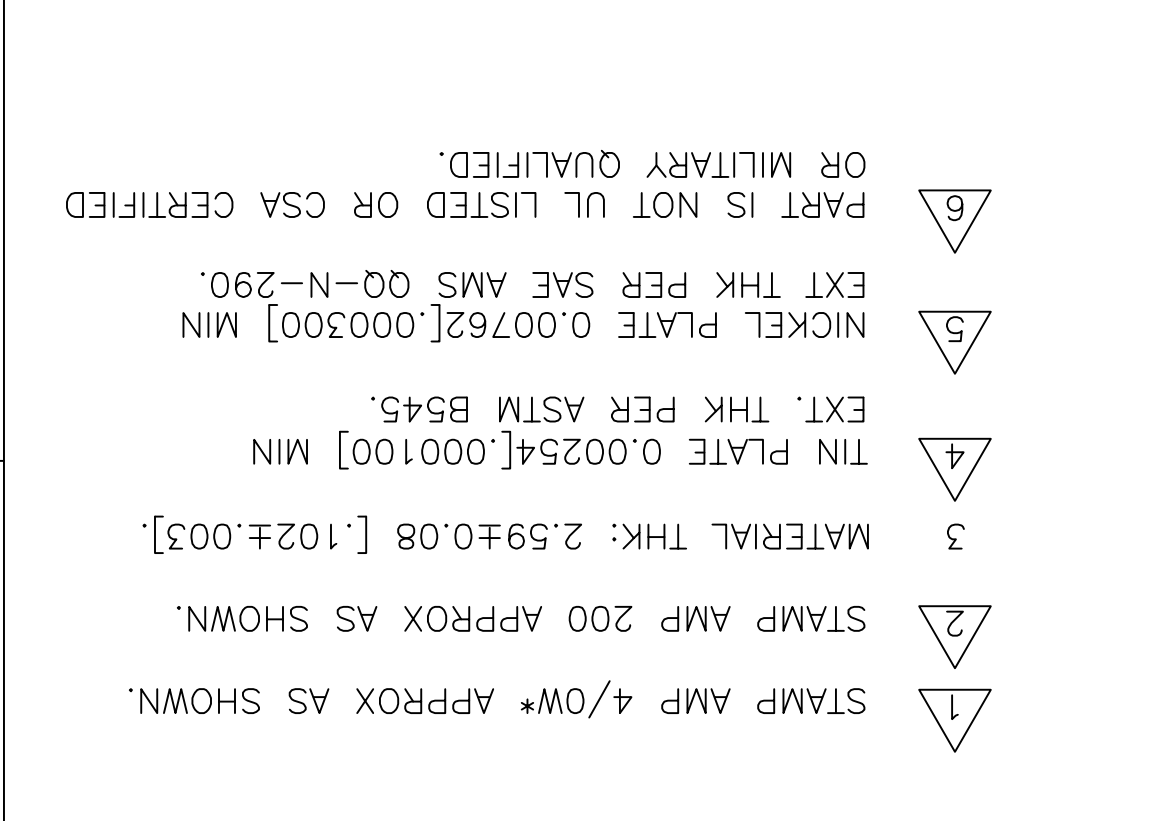


FOR ORDER ENTRY		1-800-526-5142		COPPER PER ASTM B-152 ANNEALED		CUSTOMER DRAWING		SCALE 2:1		SHEET 1 OF 1		REV H3	
FOR ADDITIONAL COPIES OF DRAWINGS AND TECHNICAL DOCUMENTS		1-800-522-6752		VOLTAGE RATING: NOT APPLICABLE		APVD 1/27/94		RD HEIM		CHK 1/27/94		DWN 5/25/93	
PRODUCT INFORMATION CENTER		1-800-722-1111		WIRE CROSS SECTIONAL AREA RANGE: 96.3-117.0mm <sup>2</sup> [190.000-231.100] CIR MILS		APVD 1/27/94		RE ROSE		PRODUCT SPEC		APPLICATION SPEC	
TOOLING ASSISTANCE CENTER		1-800-722-1111		DIMENSIONS: mm [INCHES]		APVD 1/27/94		RD HEIM		PRODUCT SPEC		APPLICATION SPEC	
FOR APPLICATION		TOOLING ASSISTANCE CENTER		SEE TABLE		APVD 1/27/94		RD HEIM		PRODUCT SPEC		APPLICATION SPEC	
AMP INCORPORATED CUSTOMER SERVICE SYSTEMS		MAX RECOMMENDED OPERATING TEMPERATURE:		FINISH		APVD 1/27/94		RD HEIM		PRODUCT SPEC		APPLICATION SPEC	
THIS DRAWING IS UNPUBLISHED.		RELEASED FOR PUBLICATION		TOLERANCES UNLESS OTHERWISE SPECIFIED:		APVD 1/27/94		RD HEIM		PRODUCT SPEC		APPLICATION SPEC	
ALL RIGHTS RESERVED.		BY - -		0 PLC ±		APVD 1/27/94		RD HEIM		PRODUCT SPEC		APPLICATION SPEC	
				1 PLC ±		APVD 1/27/94		RD HEIM		PRODUCT SPEC		APPLICATION SPEC	
				2 PLC ±		APVD 1/27/94		RD HEIM		PRODUCT SPEC		APPLICATION SPEC	
				3 PLC ±		APVD 1/27/94		RD HEIM		PRODUCT SPEC		APPLICATION SPEC	
				4 PLC ±		APVD 1/27/94		RD HEIM		PRODUCT SPEC		APPLICATION SPEC	
				ANGLES ±		APVD 1/27/94		RD HEIM		PRODUCT SPEC		APPLICATION SPEC	
				WEIGHT		APVD 1/27/94		RD HEIM		PRODUCT SPEC		APPLICATION SPEC	
				SIZE		APVD 1/27/94		RD HEIM		PRODUCT SPEC		APPLICATION SPEC	
				CAGE CODE		APVD 1/27/94		RD HEIM		PRODUCT SPEC		APPLICATION SPEC	
				DRAWING NO		APVD 1/27/94		RD HEIM		PRODUCT SPEC		APPLICATION SPEC	
				RESTRICTED TO		APVD 1/27/94		RD HEIM		PRODUCT SPEC		APPLICATION SPEC	

RECOMMENDED OPERATING TEMP.	QTY.	PACKAGE TYPE	PART NUMBER
343.C [650.F]	50	LOOSE PIECE	321878-1
170.C [338.F]			321878



AMP WIRE RANGE	4/0 AWG	4/0 AWG	WIRE RANGE
MS 20659-123 CLASS 2	4/0 AWG	4/0 AWG	SOLID OR STRANDED
MILITARY P/N AND CLASS	LR189	LR189	Certified
MS 20659-123 CLASS 2	4/0 AWG	4/0 AWG	SOLID OR STRANDED

REVISIONS	DESCRIPTION	DATE	DWN	APVD
H3	REVISED PER ECO-17-004099	28AUG2017	RS	DR
H2	REVISED PER ECO-12-002699	13FEB12	KH	DR

THIS DRAWING IS UNPUBLISHED. RELEASED FOR PUBLICATION. ALL RIGHTS RESERVED. BY - -

FOR ADDITIONAL COPIES OF DRAWINGS AND TECHNICAL DOCUMENTS		1-800-522-6752		VOLTAGE RATING: NOT APPLICABLE		APVD 1/27/94		RD HEIM		CHK 1/27/94		DWN 5/25/93	
PRODUCT INFORMATION CENTER		1-800-722-1111		WIRE CROSS SECTIONAL AREA RANGE: 96.3-117.0mm <sup>2</sup> [190.000-231.100] CIR MILS		APVD 1/27/94		RD HEIM		PRODUCT SPEC		APPLICATION SPEC	
TOOLING ASSISTANCE CENTER		1-800-722-1111		DIMENSIONS: mm [INCHES]		APVD 1/27/94		RD HEIM		PRODUCT SPEC		APPLICATION SPEC	
FOR APPLICATION		TOOLING ASSISTANCE CENTER		SEE TABLE		APVD 1/27/94		RD HEIM		PRODUCT SPEC		APPLICATION SPEC	
AMP INCORPORATED CUSTOMER SERVICE SYSTEMS		MAX RECOMMENDED OPERATING TEMPERATURE:		FINISH		APVD 1/27/94		RD HEIM		PRODUCT SPEC		APPLICATION SPEC	
THIS DRAWING IS UNPUBLISHED.		RELEASED FOR PUBLICATION		TOLERANCES UNLESS OTHERWISE SPECIFIED:		APVD 1/27/94		RD HEIM		PRODUCT SPEC		APPLICATION SPEC	
ALL RIGHTS RESERVED.		BY - -		0 PLC ±		APVD 1/27/94		RD HEIM		PRODUCT SPEC		APPLICATION SPEC	
				1 PLC ±		APVD 1/27/94		RD HEIM		PRODUCT SPEC		APPLICATION SPEC	
				2 PLC ±		APVD 1/27/94		RD HEIM		PRODUCT SPEC		APPLICATION SPEC	
				3 PLC ±		APVD 1/27/94		RD HEIM		PRODUCT SPEC		APPLICATION SPEC	
				4 PLC ±		APVD 1/27/94		RD HEIM		PRODUCT SPEC		APPLICATION SPEC	
				ANGLES ±		APVD 1/27/94		RD HEIM		PRODUCT SPEC		APPLICATION SPEC	
				WEIGHT		APVD 1/27/94		RD HEIM		PRODUCT SPEC		APPLICATION SPEC	
				SIZE		APVD 1/27/94		RD HEIM		PRODUCT SPEC		APPLICATION SPEC	
				CAGE CODE		APVD 1/27/94		RD HEIM		PRODUCT SPEC		APPLICATION SPEC	
				DRAWING NO		APVD 1/27/94		RD HEIM		PRODUCT SPEC		APPLICATION SPEC	
				RESTRICTED TO		APVD 1/27/94		RD HEIM		PRODUCT SPEC		APPLICATION SPEC	

THIS DRAWING IS UNPUBLISHED. RELEASED FOR PUBLICATION. ALL RIGHTS RESERVED. BY - -

## X-ON Electronics

Largest Supplier of Electrical and Electronic Components

*Click to view similar products for [Terminals](#) category:*

*Click to view products by [TE Connectivity](#) manufacturer:*

Other Similar products are found below :

[HT-13-10](#) [71M-250-32-NB](#) [01-2065-1-0216](#) [00581P0075](#) [M10-10RX](#) [M10BCK](#) [60205-1](#) [604200-1](#) [60598-1-CUT-TAPE](#) [60617-1-C](#) [60873-1](#) [M14-516R/SK](#) [M14-6RSX](#) [M18-10FLX](#) [M18-8FBX](#) [M18-8R/LX](#) [M18BCK](#) [61314-6-C](#) [61-S](#) [61-SN-A](#) [62-NBM-A](#) [63-S](#) [640179-1](#) [640917-2-CUT-TAPE](#) [6501550002](#) [66107-2-C](#) [696683-1](#) [696834-1](#) [696861-1](#) [696931-1](#) [696999-1](#) [M8-516RK](#) [M86700006](#) [MA250DMFMX-A](#) [701-2007](#) [701-2307](#) [701-7761-03](#) [70F-110-32-PB](#) [718-N-A](#) [71M-187-20-NBL](#) [71M-250-32-NBL](#) [72F-187-20-NBL](#) [72M-250-32-NBL](#) [7310](#) [73F-250-32](#) [73F-250-32-NBL](#) [73F-250-32-NL](#) [F14-10C](#) [F-1M](#) [751-250](#)