

■ Dimensions: (mm)

Part No.	A	B	C	D	E
DJNR 5040-1R5~100	4.9 ± 0.2	4.9 ± 0.2	4.1 Max.	1.2 ± 0.2	3.3 ± 0.2
DJNR 5040-150~470	4.9 ± 0.2	4.9 ± 0.2	4.0 Max.	1.2 ± 0.2	3.3 ± 0.2

■ Series List

No.	Part No.	L (μ H)	SRF Min. (MHz)	RDC $\pm 20\%$ (Ω)	Isat Max. (mA)	Irms Max. (mA)
1	DJNR5040-1R5-S	1.5	60	0.017	6400	4500
2	DJNR5040-2R2-S	2.2	42	0.022	5000	3700
3	DJNR5040-3R3-S	3.3	32	0.027	4000	3300
4	DJNR5040-4R7-S	4.7	28	0.029	3300	3100
5	DJNR5040-6R8-S	6.8	21	0.049	2800	2400
6	DJNR5040-100-S	10	18	0.056	2300	2100
7	DJNR5040-150-S	15	13	0.080	2000	1800
8	DJNR5040-220-S	22	9	0.126	1500	1400
9	DJNR5040-330-S	33	7	0.180	1300	1200
10	DJNR5040-470-S	47	6	0.310	1100	900

1. Test Frequency : 100KHz

2. Tolerance : N \pm 30% ; M \pm 20%

3. Isat : The value of current causes a 30% inductance reduction from initial value.

4. Irms : The value of current causes a 40°C temperature rise.

5. Rated Current: Either Isat or Irms whichever is smaller.

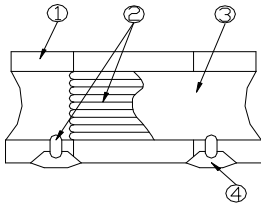
6. Operating Temperature Range : -25°C to +125°C (Including self-temperature rise)

7. Storage Temp. Range: -40°C to +85°C

□ PACKAGE

Type	DJNR 5040
Q'TY/Reel	1500

Structural Drawing

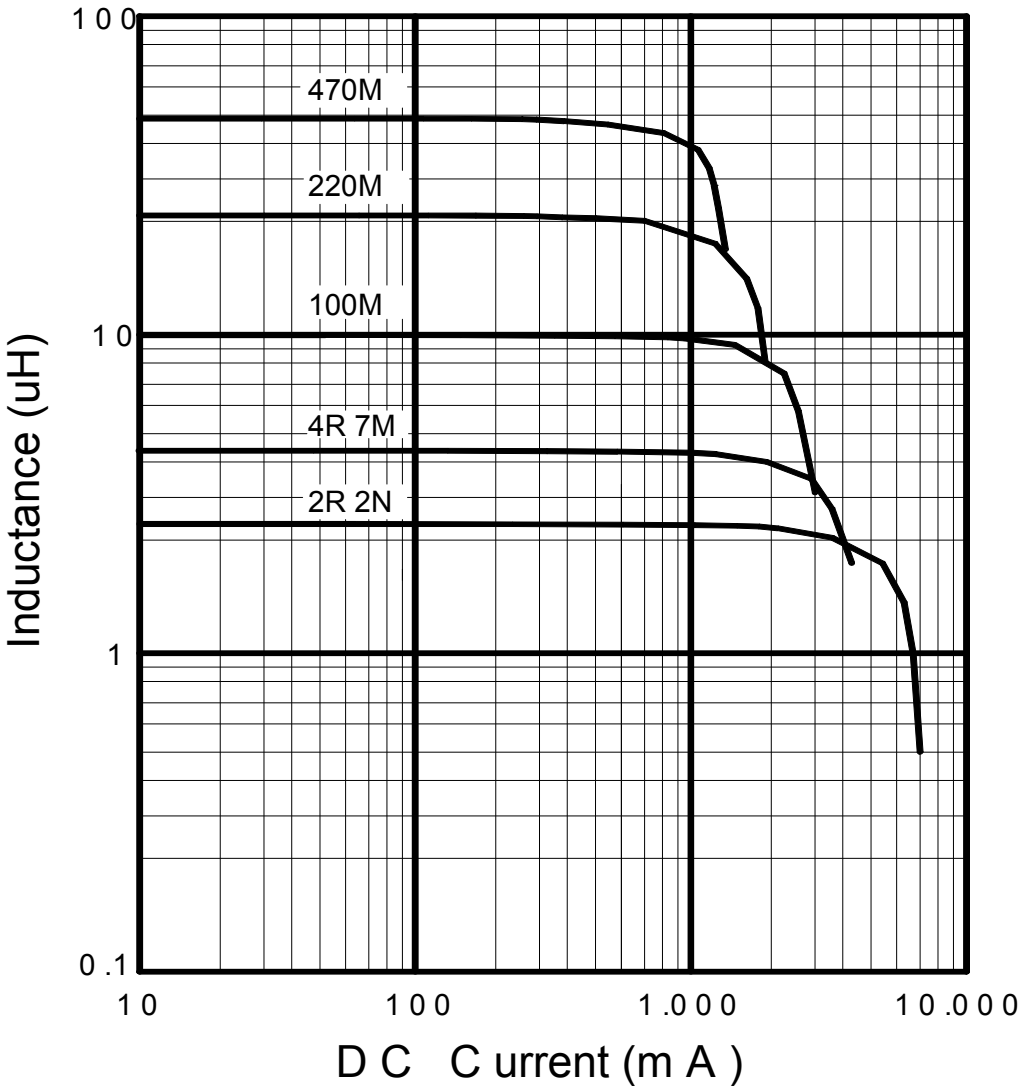


(Magnetic Shielded Type)

- ϵ Ferrite core. Ni-Zn ferrite
- $\&$ Winding wire Polyurethane-copper wire
- Over-coating resin. Epoxy resin, containing ferrite powder
- Electrode External electrode (substrate) Ag
- External electrode (base plating) Ni-Sn
- External electrode (top surface solder coating) Sn-Ag-Cu

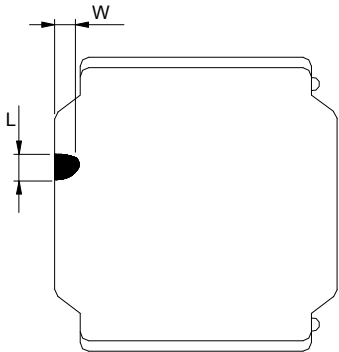
Electrical Curve

Inductance vs. D C C urrent



■ Core Chipping

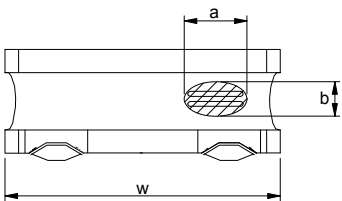
The appearance standard of the chipping size in top side, of bottom side ferrite Core is following dimension



L	W
1.5mmMax.	1.5mmMax.

■ Exposed wire tolerance limit of coating resin part on product side

Size of exposed wire occurring to coating resin is specified below.



- ☞ Width direction (dimension a): Acceptable when $a \leq w/2$
Nonconforming when $a > w/2$
- ☞ Length direction (dimension b): Dimension b is not specified.
- When total area of exposed wire occurring to each sides is not greater than 50% of coating resin area, that is acceptable.

X-ON Electronics

Largest Supplier of Electrical and Electronic Components

Click to view similar products for [Ferrite Beads](#) category:

Click to view products by [Ferrocore](#) manufacturer:

Other Similar products are found below :

[2943778301](#) [BMB1J0120BN3JIT](#) [82350120560](#) [0261014605](#) [2643066902](#) [3061000011](#) [2673045901](#) [2643083601](#) [2643074901](#) [4361142521](#)
[4078078621](#) [4078044821](#) [4078033621](#) [CZB2BFTTE121P](#) [BMB2A0120AN2](#) [BMB1J0200BN3JIT](#) [EMI0805R-220](#) [74279250](#) [7427924](#)
[CZB1JGTTD202P](#) [MAF0603GWY551AT000](#) [MAF1005GWZ102AT000](#) [BLM18HE152SH1D](#) [2944778302](#) [BLM02PX600SN1D](#) [SMB2.5-1](#)
[EMI1206R-600](#) [BLM02KX180SN1D](#) [BLM02BC100SN1D](#) [BLM02KX100SN1D](#) [BLM02BB101SN1D](#) [BLM02BC220SN1D](#)
[BLE32PN260SH1L](#) [BLE32PN260SN1L](#) [BLE32PN260SZ1L](#) [74275013](#) [7427503](#) [BLM18HE601SH1D](#) [BLM15BD152SN1D](#)
[BLM15BD152SZ1D](#) [BLE18PS080SZ1D](#) [BLM21PG221BH1D](#) [WLBD1005HCU330TL](#) [BLM21AG471BH1D](#) [BLE18PS080BH1D](#)
[BLM21AG331BH1D](#) [BLM21PG300BH1D](#) [BLM21PG600BH1D](#) [BLM03HB401SZ1D](#) [BLM03HB401SN1D](#)