

# 8020 Series Snap-acting Momentary Pushbutton Switches



A

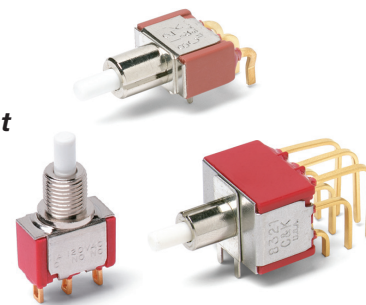
Pushbutton

## Features/Benefits

- Positive tactile feel
- Multi-positions available
- Wide variety of termination options
- Epoxy terminal seal compatible with bottom wash cleaning
- RoHS compliant models available

## Typical Applications

- Instrumentation
- Computer peripherals
- Telecommunications equipment



Models Available

## Specifications

**CONTACT RATING:** B contact material (8X25 Models): 0.4 VA max. @ 20 V AC or DC maximum. G contact material (8X21, U8X1 Models): 1 AMP @ 120 V AC or 28 V DC or 0.4 VA max. @ 20 V AC or DC max. Note: Break-before-make contacts. Multi-pole contacts do not make and break simultaneously. See page A-43 for additional ratings.

**ELECTRICAL LIFE:** 60,000 make-and-break cycles at full load.

**CONTACT RESISTANCE:** Below 50 mΩ typ. initial @ 2-4 V DC, 100 mA, for both silver and gold plated contacts.

**INSULATION RESISTANCE:** 10<sup>9</sup>Ω min.

**DIELECTRIC STRENGTH:** 1,000 Vrms min. @ sea level.

**OPERATING TEMPERATURE:** 8X2X MODELS: -30°C to 75°C. U8X1 MODELS: -30°C to 85°C.

**CAP INSTALLATION FORCE:** 10 lbs. max. permissible.

**SOLDERABILITY:** Per MIL-STD-202F method 208D, or EIA RS-186E method 9 (1 hour steam aging).

**NOTE:** Any models supplied with B, P, R, or G contact material are RoHS compliant.

**NOTE:** Specifications and materials listed above are for switches with standard options. For information on specific and custom switches, consult Customer Service Center.

## Materials

**CASE:** Glass filled nylon 6/6 or diallyl phthalate (DAP), flame retardant (UL 94V-0).

**PLUNGER:** Glass filled nylon or glass filled polyester (PBT) (UL 94V-0).

**CAP & FRAME:** Nylon, black, standard.

**BUSHING:** Brass or zinc, nickel plated.

**HOUSING:** Stainless steel.

**SWITCH SUPPORT:** Brass or steel, matte-tin plated.

**N.O. & N.C. CONTACTS:** 8X21, U8X1 MODELS: G contact material: Coin silver, with gold plate over nickel plate. See page A-43 for additional contact materials.

8X25 MODELS: B contact material: Copper alloy, with gold plate over nickel plate. See page A-43 for additional contact materials.

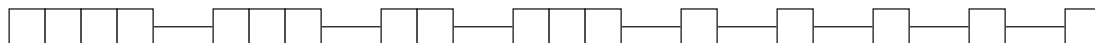
**COMMON CONTACT & ALL TERMINALS:** Copper alloy, with gold plate over nickel plate.

**TERMINAL SEAL:** Epoxy. Refer to soldering and cleaning Technical Data Chapter.

**HARDWARE:** Nut & Locking Ring: Brass, nickel plated; Lockwasher: Steel, nickel plated.

## Build-A-Switch

To order, simply select desired option from each category and place in the appropriate box. Available options are shown and described on pages A-30 thru A-45. For additional options not shown in catalog, consult Customer Service Center. All models have epoxy terminal seal and are compatible with all "bottom-wash" PCB cleaning methods.



### Switch Function

- 8121** SPDT On-Mom. 1 Amp
- 8125** SPDT On-Mom. 0.4VA
- 8221** DPDT On-Mom. 1 Amp
- 8225** DPDT On-Mom. 0.4VA
- 8321** 3PDT On-Mom. 1 Amp
- 8325** 3PDT On-Mom. 0.4VA
- 8421** 4PDT On-Mom. 1 Amp
- 8425** 4PDT On-Mom. 0.4VA

### Actuator or Plunger

- S** Plunger
- NONE** Snap-in
- J80** Snap-in
- J81** Snap-in w/frame
- J82** Snap-in w/frame for LED
- J83** Snap-in w/frame & flush cap
- J84** Snap-in w/frame for LED, flush cap
- J85** Snap-in w/frame & LED
- J95** PC w/V-bracket & LED
- L** Plunger
- M** Snap-fitting plunger

### Bushing

- D9** .280" high, keyway
- H** .250" high, flat
- NONE** No bushing choice required
- D** .280" high, keyway
- D2** .288" high, flat
- D3** .180" high
- D8** .288" high, flat
- H9** .250" high, flat, hi torque
- Y** .350" high, keyway
- Y3** 6.35mm high, keyway, hi torque
- Y4** .378" high, flat, hi torque
- Y9** .350" high, keyway

### Contact Material

- B** Gold
- P** Gold, matte-tin
- G** Gold over silver
- R** Gold over silver, matte-tin

### Seal

- E** Epoxy
- I** Epoxy potted base

### Cap Color

- 2** Black
- NONE** Models without caps
- 1** White
- 3** Red
- 4** Orange
- 5** Yellow
- 6** Green
- 7** Blue
- 9** Gray

### Frame Color

- 2** Black
- NONE** Models without frame
- 1** White
- 3** Red
- 5** Yellow
- 6** Green
- 9** Gray

### LED Color

- 3** Red
- NONE** Models without LED
- 5** Yellow
- 6** Green

### Terminations

- A** Right angle, PC thru-hole
- AV2** Vertical right angle, PC thru-hole
- C** PC Thru-hole
- Z** Solder lug
- A2** Right angle, PC thru-hole
- A3** Right angle, snap-in, PC thru-hole
- A4** Right angle, PC thru-hole, reversed terminals
- A6** Right angle, PC thru-hole
- AV1** Vertical right angle, PC thru-hole
- AV3** Vertical right angle, snap-in, PC thru-hole
- R** Right angle with PCB
- R2** Right angle with PCB, reversed terminals
- V2** .555" high, V-bracket
- V3** .460" high, V-bracket
- V4** .630" high, V-bracket
- V6** .460" high, V-bracket
- V7** .630" high, V-bracket
- V8** .953" high, V-bracket
- V9** 1.150" high, V-bracket
- V31** .460" high, snap-in V-bracket
- V61** .460" high, snap-in V-bracket
- W** .750" long, wire wrap
- W1** .964" long, wire wrap
- W3** .425" long, wire wrap
- W4** 1.062" long, wire wrap
- Z3** Quick connect

Note: UL models available, see page A-30 and A-31.

Dimensions are shown: Inches (mm)

Specifications and dimensions subject to change



29 Aug 18



# 8020 Series Snap-acting Momentary Pushbutton Switches

## SWITCH FUNCTION

Pushbutton

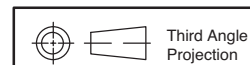
| NO. POLES                                       | MODEL NO.   | UL/CSA* MODEL NO. | SWITCH FUNCTION |        | CONNECTED TERMINALS |             | SCHEMATIC |
|---|-------------|-------------------|-----------------|--------|---------------------|-------------|-----------|
|   |             |                   | POS. 1          | POS. 2 | POS. 1              | POS. 2      |           |
| SP  | <b>8121</b> | <b>U811</b>       | ON              | MOM.   | 1-3                 | 1-2         |           |
|   | <b>8125</b> |                   | ON              | MOM.   |                     |             |           |
| <b>SPDT</b> <p>Part number shown: 8121SHZGE</p> |             |                   |                 |        |                     |             |           |
| DP  | <b>8221</b> | <b>U821</b>       | ON              | MOM.   | 1-3,4-6             | 1-2,4-5     |           |
|   | <b>8225</b> |                   | ON              | MOM.   |                     |             |           |
| <b>DPDT</b> <p>Part number shown: 8221SHZGE</p> |             |                   |                 |        |                     |             |           |
| 3P  | <b>8321</b> | <b>U831</b>       | ON              | MOM.   | 1-3,4-6,7-9         | 1-2,4-5,7-8 |           |
|   | <b>8325</b> |                   | ON              | MOM.   |                     |             |           |
| <b>3PDT</b> <p>Part number shown: 8321SHZGE</p> |             |                   |                 |        |                     |             |           |

MOM. = Momentary

\*U811 thru U841 model numbers with all options (except R, R2 terminations) when ordered with G or R contact material.

8X25 models must be ordered with B or P contact material.

8X21 and U8X1 models must be ordered with G or R contact material.



Dimensions are shown: Inches (mm)  
Specifications and dimensions subject to change



29 Aug 18

# 8020 Series Snap-acting Momentary Pushbutton Switches



A Pushbutton

## SWITCH FUNCTION

| NO. POLES | MODEL NO. | UL/CSA* MODEL NO. | SWITCH FUNCTION |        | CONNECTED TERMINALS |                   | SCHEMATIC |
|-----------|-----------|-------------------|-----------------|--------|---------------------|-------------------|-----------|
|           |           |                   | POS. 1          | POS. 2 | POS. 1              | POS. 2            |           |
| 4P        | 8421      | U841              | ON              | MOM.   | 1-3,4-6-7-9,10-12   | 1-2,4-5,7-8,10-11 |           |
|           | 8425      |                   | ON              | MOM.   |                     |                   |           |

**4PDT**

Part number shown: 8421SHZGE

MOM. = Momentary

\* U811 thru U841 model numbers with all options (except R, R2 terminations) when ordered with G or R contact material.

8X25 models must be ordered with B or P contact material.

8X21 and U8X1 models must be ordered with G or R contact material.

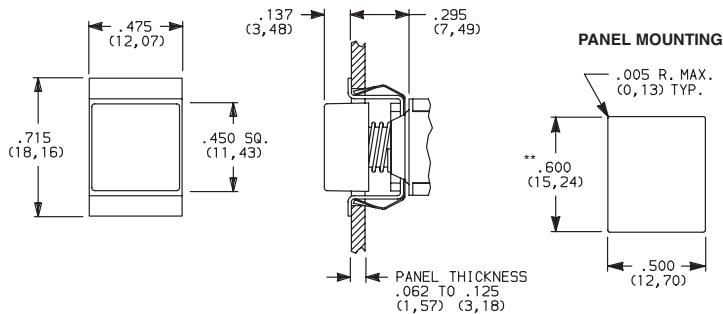
## ACTUATOR—SNAP-IN FRONT MOUNT

| OPTION CODE | CAP AND FRAME COLOR         |
|-------------|-----------------------------|
| <b>2</b>    | BLACK                       |
| <b>NONE</b> | No Frame Color (J80 option) |
| <b>1</b>    | WHITE                       |
| <b>3</b>    | RED                         |
| <b>4</b>    | ORANGE                      |
| <b>5</b>    | YELLOW                      |
| <b>6</b>    | GREEN                       |
| <b>7</b>    | BLUE                        |
| <b>9</b>    | GRAY                        |

Other colors available, consult Customer Service Center. Cap and Frame Finish: matte.

NOTE: Caps and frames available separately, see pages A-44 and A-45.

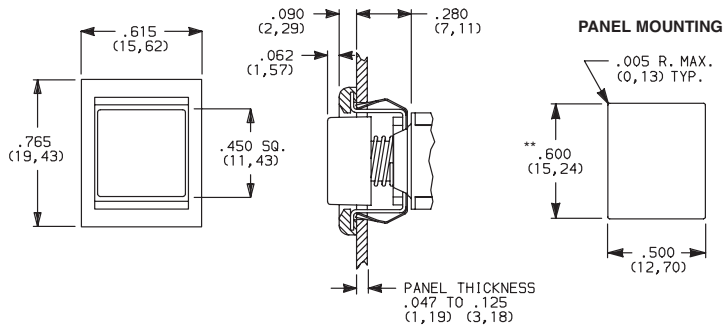
### J80 SNAP-IN



NOTE: No frame color choice required.

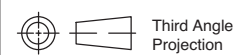
\*\* Increase this dim. to .620/.625 (15,75/15,88) for .091/.125 (2,31/3,18) thk. panels.

### J81 SNAP-IN WITH FRAME



NOTE: Available with C, W-W4, Z or Z3 terminations and SPDT and DPDT models only.

\*\* Increase this dim. to .620/.625 (15,75/15,88) for .091/.125 (2,31/3,18) thk. panels.

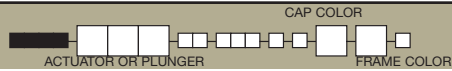


29 Aug 18



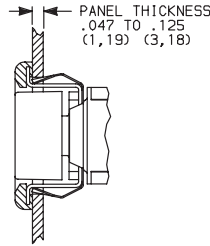
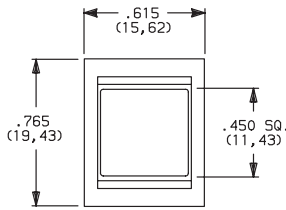
# 8020 Series Snap-acting Momentary Pushbutton Switches

## ACTUATOR—SNAP-IN FRONT MOUNT

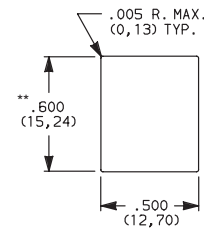


Pushbutton  
A

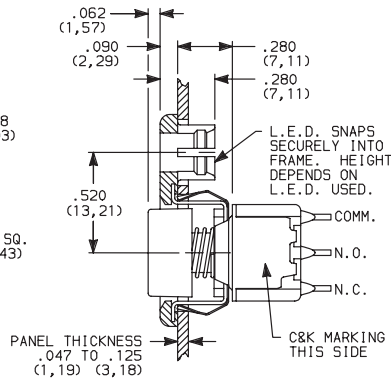
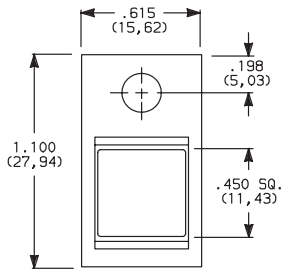
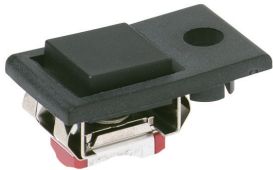
### J83 SNAP-IN WITH FRAME AND FLUSH CAP



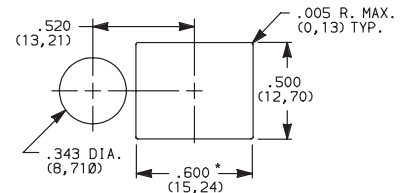
#### PANEL MOUNTING



### J82 SNAP-IN WITH FRAME FOR LED



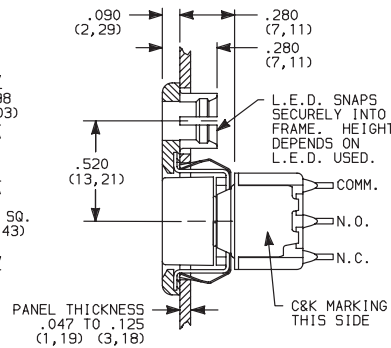
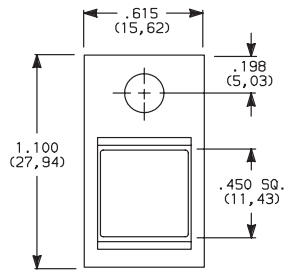
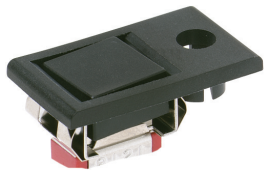
#### PANEL MOUNTING



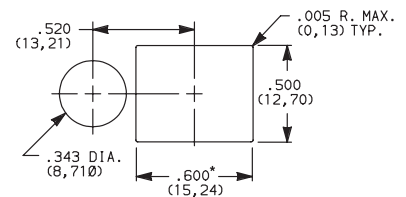
\* Increase this dim. to .620/.625 (15,75/15,88) for .091/.125 (2,31/3,18) thk. panels.

LED not included.  
For LED information, see page A-45.

### J84 SNAP-IN WITH FRAME FOR LED, FLUSH CAP



#### PANEL MOUNTING



\* Increase this dim. to .620/.625 (15,75/15,88) for .091/.125 (2,31/3,18) thk. panels.

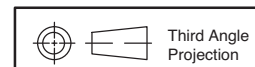
LED not included.  
For LED information, see page A-45.

| OPTION CODE | CAP AND FRAME COLOR |
|-------------|---------------------|
| 2           | BLACK               |
| 1           | WHITE               |
| 3           | RED                 |
| 4           | ORANGE              |
| 5           | YELLOW              |
| 6           | GREEN               |
| 7           | BLUE                |
| 9           | GRAY                |

Other colors available, consult Customer Service Center.  
Cap and Frame Finish: matte.

Available with C, W-W4, Z or Z3 terminations and SPDT and DPDT models only.

NOTE: Caps and frames available separately, see pages A-44 and A-45.



Third Angle Projection



29 Aug 18

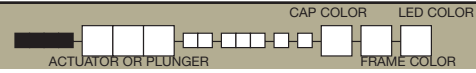
Dimensions are shown: Inches (mm)  
Specifications and dimensions subject to change

# 8020 Series Snap-acting Momentary Pushbutton Switches

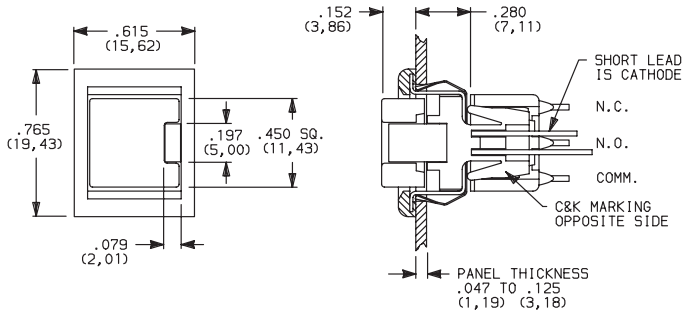


A Pushbutton

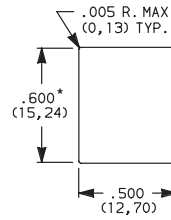
## ACTUATOR—SNAP-IN FRONT MOUNT



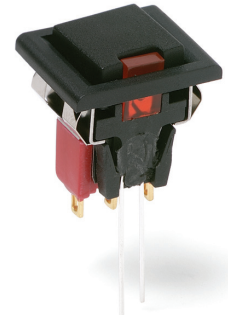
### J85 SNAP-IN WITH FRAME AND LED



#### PANEL MOUNTING



\* Increase this dim. to .620/.625 (15,75/15,88) for .091/.125 (2,31/3,18) thk. panels.



8121J85ZGE23 SPST

Available with C, W-W4, Z or Z3 terminations and SPDT models only. For LED information see page A-45.

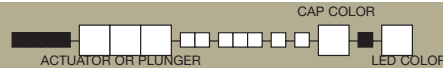
NOTE: Caps & frames available separately, see pages A-44 and A-45.

| OPTION CODE | CAP AND FRAME COLOR |
|-------------|---------------------|
| 2           | BLACK               |
| 1           | WHITE               |
| 3           | RED                 |
| 4           | ORANGE              |
| 5           | YELLOW              |
| 6           | GREEN               |
| 7           | BLUE                |
| 9           | GRAY                |

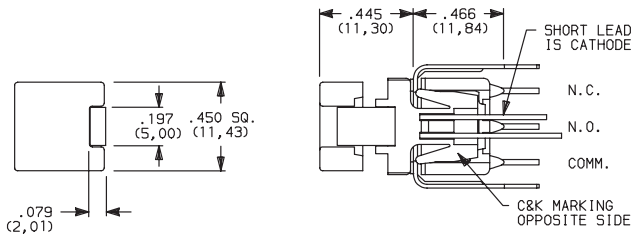
| OPTION CODE | LED COLOR |
|-------------|-----------|
| 3           | RED       |
| 5           | YELLOW    |
| 6           | GREEN     |

For LED information see page A-45.

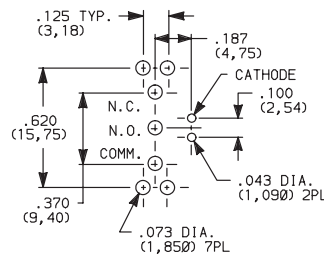
## ACTUATOR—PC MOUNT



### J95 PC WITH V-BRACKET AND LED



#### PC MOUNTING



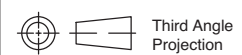
8121J95V3GE23 SPST

| OPTION CODE | CAP AND FRAME COLOR |
|-------------|---------------------|
| 2           | BLACK               |
| 1           | WHITE               |
| 3           | RED                 |
| 4           | ORANGE              |
| 5           | YELLOW              |
| 6           | GREEN               |
| 7           | BLUE                |
| 9           | GRAY                |

| OPTION CODE | LED COLOR |
|-------------|-----------|
| 3           | RED       |
| 5           | YELLOW    |
| 6           | GREEN     |

For LED information see page A-45.

NOTE: Caps available separately, see page A-44. Available with V3 terminations and SPDT models only.



Third Angle Projection



29 Aug 18

Dimensions are shown: Inches (mm)  
Specifications and dimensions subject to change



# 8020 Series Snap-acting Momentary Pushbutton Switches

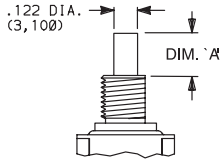
Pushbutton

A

## PLUNGER

ACTUATOR OR PLUNGER

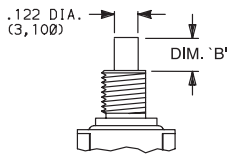
### S PLUNGER



**NONE** NO PLUNGER CHOICE REQUIRED (JXX ACTUATORS)

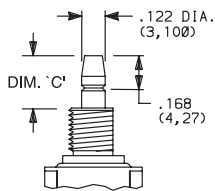
| AVAILABLE BUSHINGS | DIM. 'A' FOR C, W-W4, Z & Z3 TERMINATIONS | DIM. 'A' FOR A, A2, A3, A4, A6, AV-A3, R & R2 TERMINATIONS | DIM. 'A' FOR V3-V61 TERMINATIONS |
|--------------------|---|--|----------------------------------|
| D, D9              | .244 (6,20)                               | .228 (5,79)  | .224 (5,69)                      |
| H, H9              | .218 (5,54)                               | .202 (5,13)  | .198 (5,03)                      |
| Y, Y9              | .203 (5,16)                               | .187 (4,75)  | .183 (4,65)                      |
| Y3                 | (5,54)                                    | (5,13)   | (5,03)                           |
| Y4                 | .185 (4,70)                               | .169 (4,29)  | .165 (4,19)                      |
| D2, D8             | N/A                                       | .232 (5,89)  | .228 (5,79)                      |
| D3                 | N/A                                       | .162 (4,11)  | .158 (4,01)                      |

### L PLUNGER



| AVAILABLE BUSHINGS | DIM. 'B' FOR C, W-W4, Z & Z3 TERMINATIONS | DIM. 'B' FOR A, A2, A3, A4, A6, AV-A3, R & R2 TERMINATIONS | DIM. 'B' FOR V3-V61 TERMINATIONS |
|--------------------|---|--|----------------------------------|
| Y, Y9              | .178 (4,52)                               | .162 (4,11)  | .158 (4,01)                      |
| Y4                 | .090 (2,29)                               | .074 (1,88)  | .070 (1,78)                      |

### M SNAP-FITTING PLUNGER



| AVAILABLE BUSHINGS | DIM. 'C' FOR C, W-W4, Z & Z3 TERMINATIONS | DIM. 'C' FOR A, A2, A3, A4, A6, AV-A3, R & R2 TERMINATIONS | DIM. 'C' FOR V3-V61 TERMINATIONS |
|--------------------|---|--|----------------------------------|
| D, D9              | .297 (7,54)                               | .281 (7,14)  | .277 (7,04)                      |
| H, H9              | .267 (6,78)                               | .251 (6,38)  | .247 (6,27)                      |
| Y, Y9              | .259 (6,58)                               | .243 (6,17)  | .239 (6,07)                      |
| Y3                 | (6,78)                                    | (6,37)   | (6,27)                           |
| Y4                 | .259 (6,58)                               | .243 (6,17)  | .239 (6,07)                      |
| D2, D8             | N/A                                       | .273 (6,93)  | .269 (6,83)                      |
| D3                 | N/A                                       | .361 (9,17)  | .357 (9,07)                      |

N/A = NOT AVAILABLE

NOTE: When selecting plunger option, bushing selection must also be made, see next page. No plunger option is required when any JXX actuator option is selected. Additional plunger lengths are available on SPDT and DPDT models, consult Customer Service Center. Not all plunger lengths sufficient for use with caps, see page A-44.

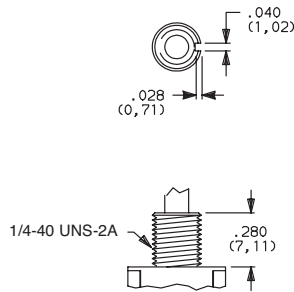
## BUSHING

**NONE** NO BUSHING CHOICE REQUIRED (JXX ACTUATORS)

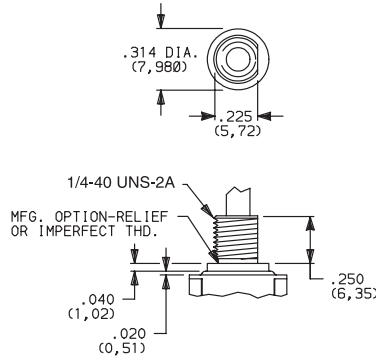
**D** .280" HIGH THREADED, KEYWAY  
**D9** .28034" HIGH UNTHREADED, KEYWAY

**H** .250"34 HIGH THREADED, FLAT  
**H9** .250"34 HIGH UNTHREADED, FLAT

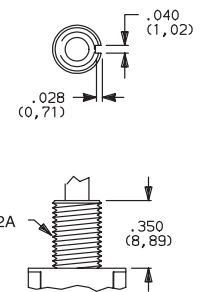
**Y** .350" HIGH THREADED, KEYWAY  
**Y9** .350" HIGH UNTHREADED, KEYWAY



D9 bushing standard with A-A6, R, R2 AV-AV3 terminations.



H bushing standard with C, W-W4, Z or Z3 terminations. H, H9 bushings not available on single pole models with A3-A6, R, R2 terminations. Will withstand 12 in./lbs. of torque with no distortion.



Dimensions are shown: Inches (mm)  
 Specifications and dimensions subject to change



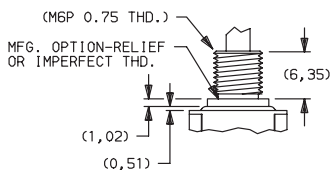
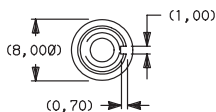
# 8020 Series Snap-acting Momentary Pushbutton Switches



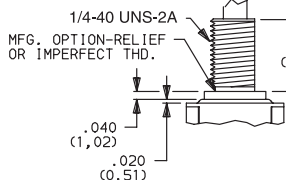
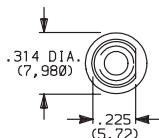
A Pushbutton

## BUSHING

**Y3** 6.35mm THREADED, KEYWAY

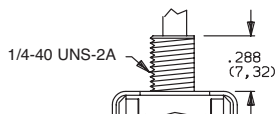


**Y4** .378" HIGH THREADED, FLAT

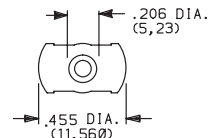


**D2** .288" HIGH THREADED, FLAT

**D8** .288" HIGH UNTHREADED, FLAT



**D3** .180" HIGH UNTHREADED



Y3 & Y4 bushings not available on single pole models with A3-A6, R, R2 terminations. Will withstand 12 in./lbs. of torque with no distortion.

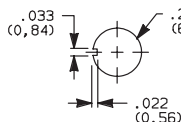
D2, D8 bushings not available with C, W-W4, Z, Z3 terminations.

D3 bushing available with A, A2, A3, AV, AV2, AV3 and V2-V61 terminations only.

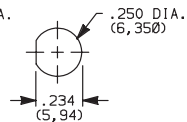
NOTE: No bushing option choice required when JXX actuator option is selected. When selecting bushing option, plunger selection must also be made, see previous page. Plunger lengths vary with bushing and termination options selected.

## PANEL MOUNTING

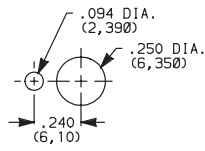
### 1/4 INCH BUSHING



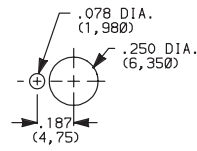
Without locking ring



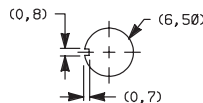
With standard locking ring



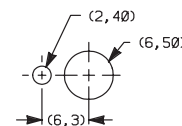
With small locking ring



### METRIC BUSHING



Without locking ring

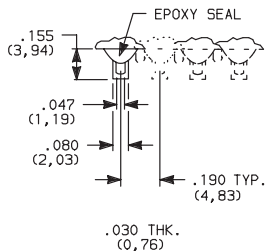


With locking ring

NOTE: Two mounting nuts, locking ring and lockwasher supplied standard with threaded bushings. Optional mounting nut and locking ring styles available, see section "Technical Data and Additional Hardware".

## TERMINATIONS

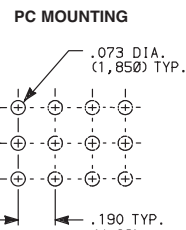
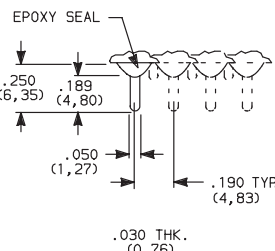
**Z** SOLDER LUG



Not available with J95 actuator, P or R contact material.

SPDT thru 4PDT

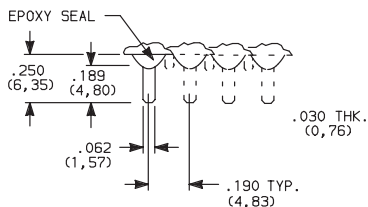
**C** PC THRU-HOLE



SPDT thru 4PDT

Not available with J95 actuator option.

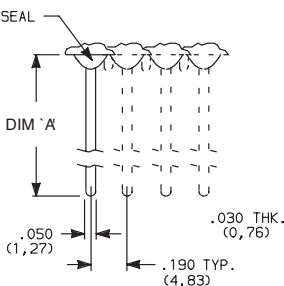
**Z3** QUICK CONNECT



Not available with J95 actuator, P or R contact material. Mating quick connector available, order part number 530100000, page A-44.

SPDT thru 4PDT

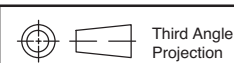
**W W1, W3, W4** WIRE WRAP



| OPTION CODE | DIM 'A'       |
|-------------|---------------|
| <b>W</b>    | .750 (19,05)  |
| <b>W1</b>   | .964 (24,49)  |
| <b>W3</b>   | .425 (10,80)  |
| <b>W4</b>   | 1.062 (26,97) |

Not available with J95 actuator option.

SPDT thru 4PDT





# 8020 Series Snap-acting Momentary Pushbutton Switches

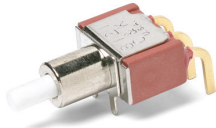
## TERMINATIONS



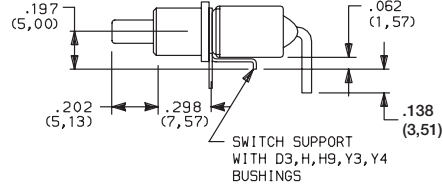
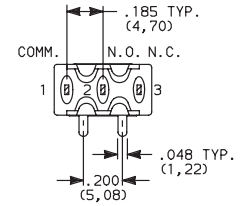
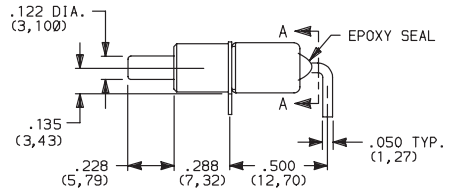
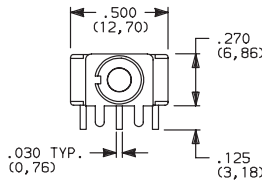
Pushbutton

A

### A RIGHT ANGLE, PC THRU-HOLE



8121SD9AGE  
SPDT

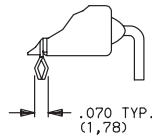
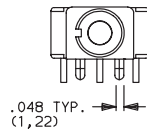


SECTION A-A

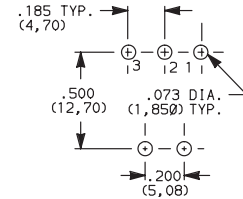
Terminal Nos.  
For Reference Only.

Part Number 8121SH9AGE

### A3 RIGHT ANGLE, SNAP-IN, PC THRU-HOLE

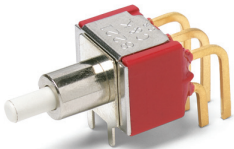


### PC MOUNTING

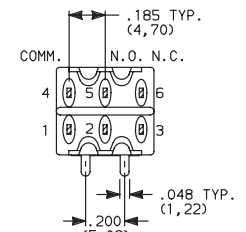
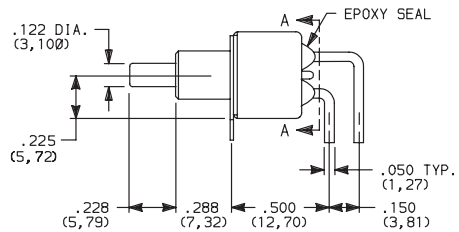
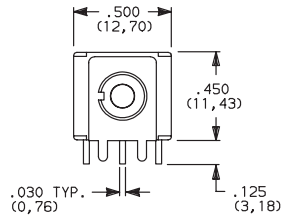


Not available with JXX actuators and I seal.  
Terminal bend radii and lead-in manufacturing option.

### A RIGHT ANGLE, PC THRU-HOLE

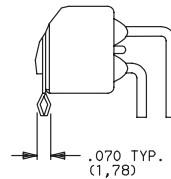
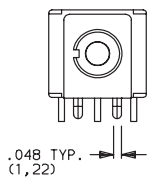


8221SD9AGE  
DPDT

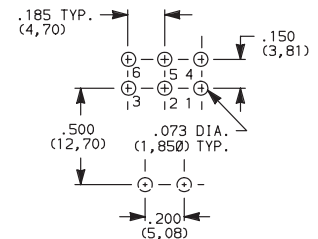


SECTION A-A

### A3 RIGHT ANGLE, SNAP-IN, PC THRU-HOLE



### PC MOUNTING



Not available with JXX actuators and I seal option.  
Terminal bend radii and lead-in manufacturing option.





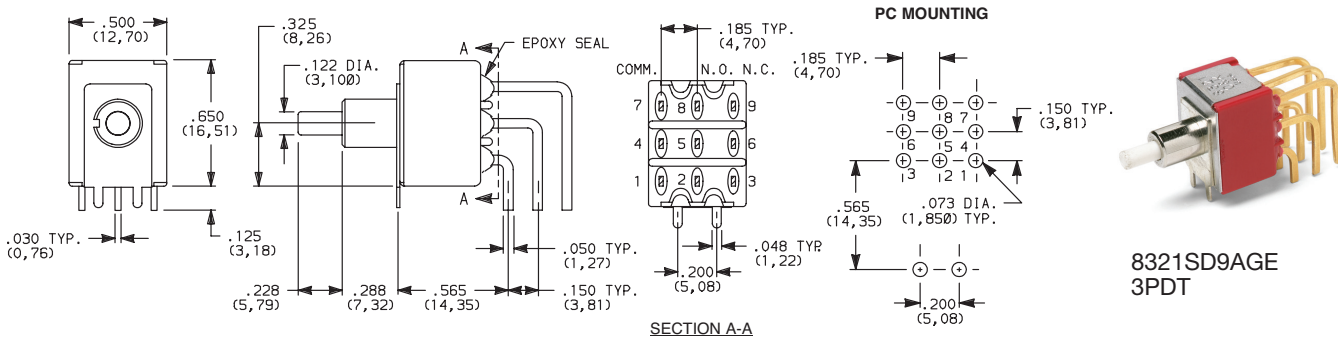
# 8020 Series Snap-acting Momentary Pushbutton Switches



A Pushbutton

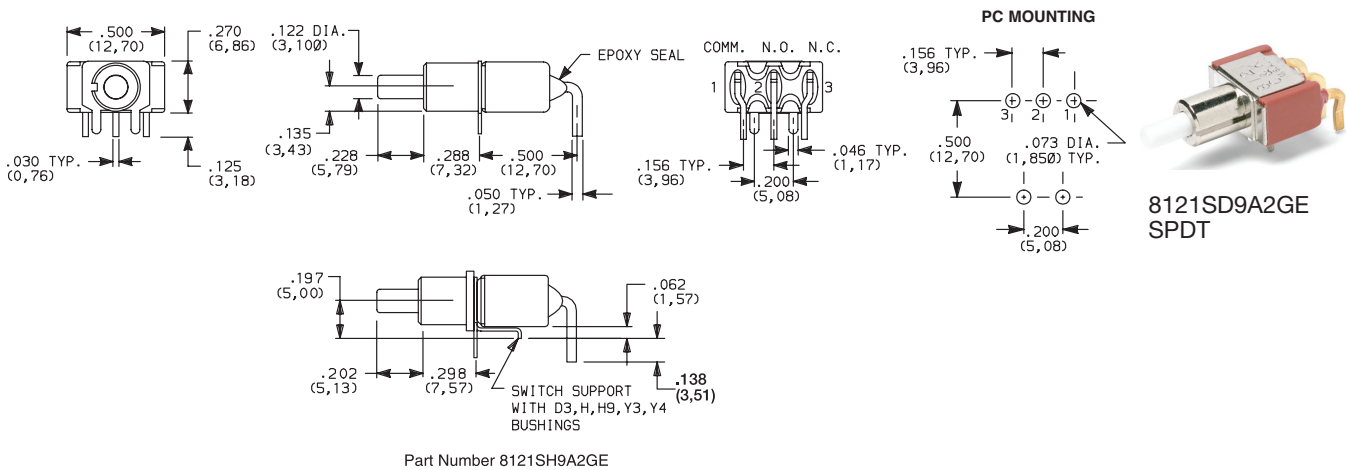
## TERMINATIONS

### A RIGHT ANGLE, PC THRU-HOLE



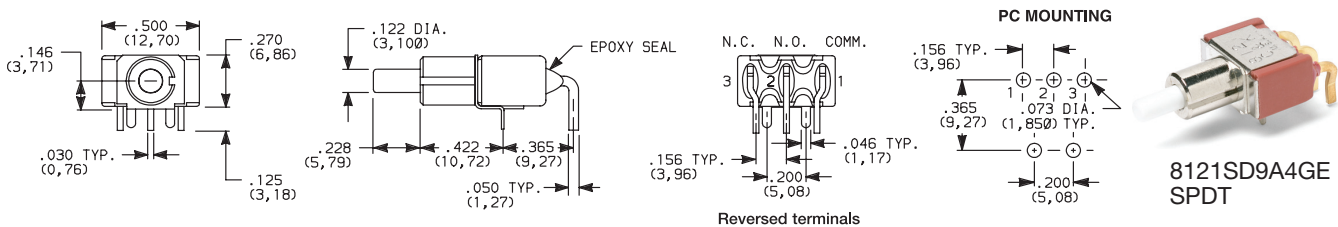
Not available with JXX actuators and I seal option.  
Terminal bend radii and lead-in manufacturing option.

### A2 RIGHT ANGLE, PC THRU-HOLE



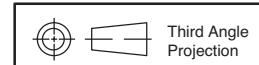
Not available with JXX actuators, I seal option.  
Terminal bend radii and lead-in manufacturing option.

### A4 RIGHT ANGLE, PC THRU-HOLE, REVERSED TERMINALS



Not available with JXX actuators, D3, H, H9, Y3, Y4 bushings and I seal.  
Terminal bend radii and lead-in manufacturing option.

The A4 and R2 termination options are functionally identical and fit the same PC mounting pattern. The switches, however, are shifted relative to the mounting holes. The PC pattern must clear the switch support legs. Unlike the R2, the A4 option is available with UL/CSA.





# 8020 Series Snap-acting Momentary Pushbutton Switches

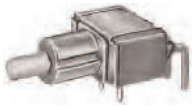
## TERMINATIONS



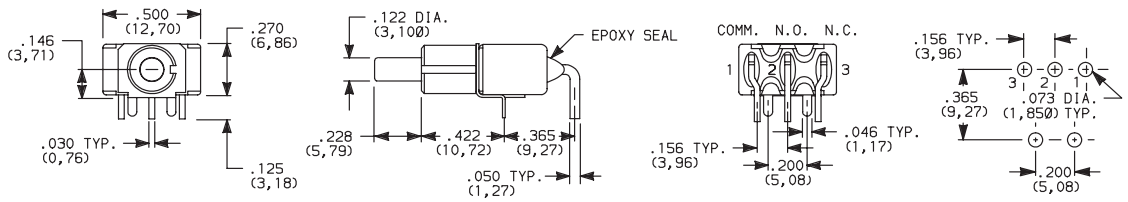
Pushbutton

A

### A6 RIGHT ANGLE, PC THRU-HOLE



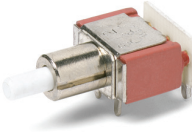
8121SD9A6GE  
SPDT



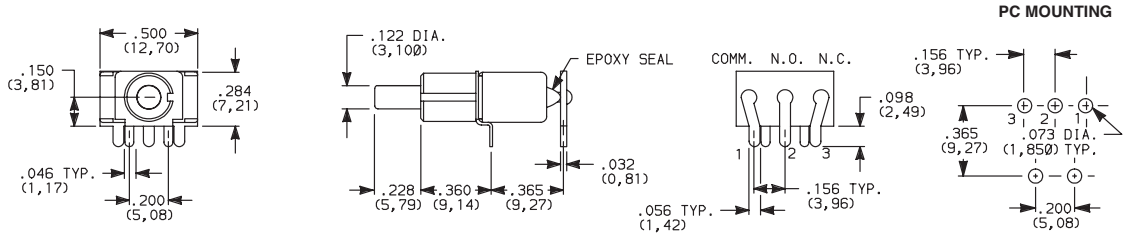
The A6 and R termination options are functionally identical and fit the same PC mounting pattern. The switches, however, are shifted relative to the mounting holes. The PC pattern must clear the switch support legs. Unlike the R, the A6 option is available with UL/CSA.

Not available with JXX actuators, D3, H, H9, Y3, Y4 bushings and I seal. Terminal bend radii and lead-in manufacturing option.

### R RIGHT ANGLE WITH PCB

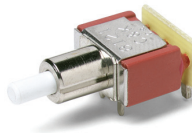


8121SD9RGE  
SPDT

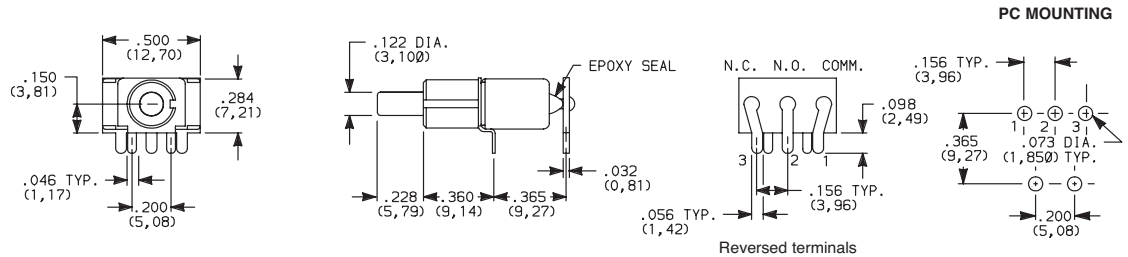


Not available with JXX actuators, D3, H, H9, Y3, Y4 bushings, I seal option. R termination not UL/CSA approved.

### R2 RIGHT ANGLE WITH PCB, REVERSED TERMINALS



8121SD9R2GE  
SPDT



Not available with JXX actuators, D3, H, H9, Y3, Y4 bushings, I seal option. R2 termination not UL/CSA approved.



Third Angle  
Projection



29 Aug 18

Dimensions are shown: Inches (mm)  
Specifications and dimensions subject to change

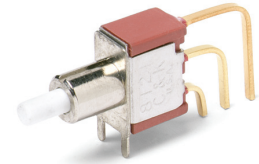
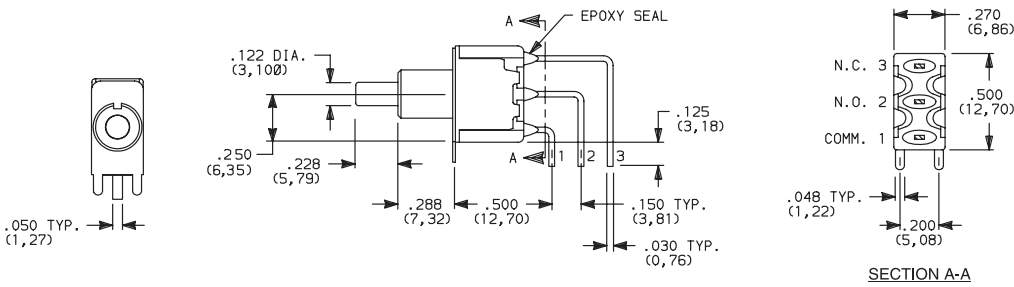
# 8020 Series Snap-acting Momentary Pushbutton Switches



A Pushbutton

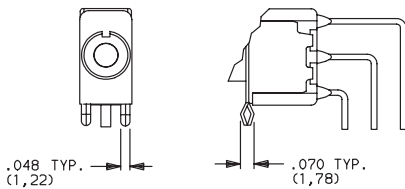
## TERMINATIONS

**AV2** VERTICAL RIGHT ANGLE, PC THRU-HOLE, .150" PITCH

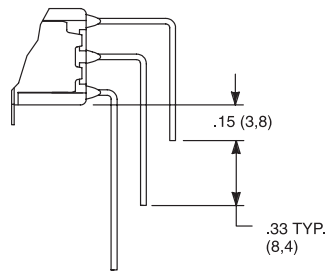


8121SD9AV2GE SPDT

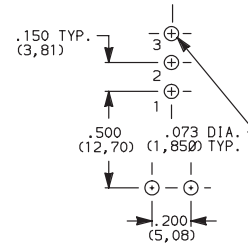
**AV3** VERTICAL RIGHT ANGLE, SNAP-IN, PC THRU-HOLE, .150" PITCH



**AV1** VERTICAL RIGHT ANGLE, EXTENDED, PC THRU-HOLE, .150" PITCH

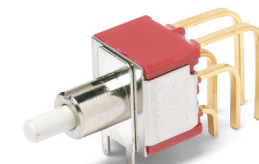
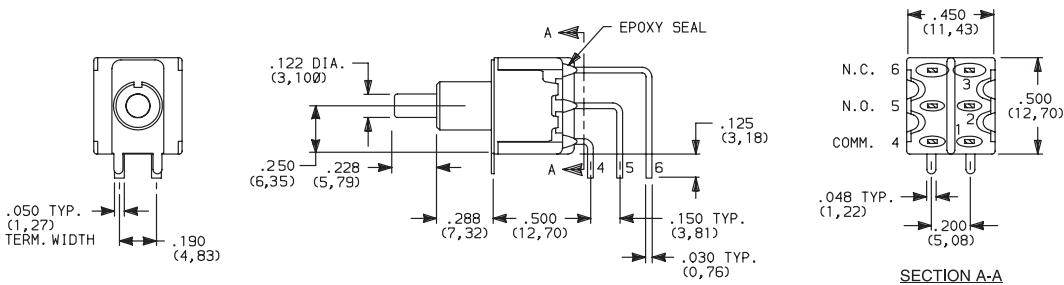


PC MOUNTING



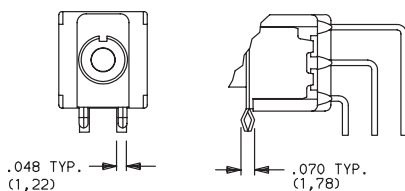
Not available with JXX actuators and I seal.  
Terminal bend radii and lead-in manufacturing option.

**AV2** VERTICAL RIGHT ANGLE, PC THRU-HOLE, .150" PITCH

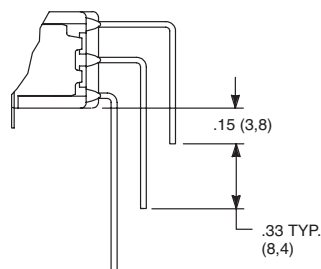


8221SD9AV2GE DPDT

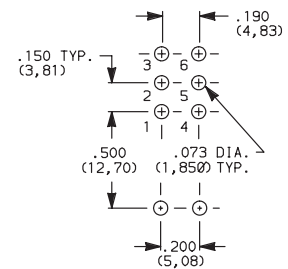
**AV3** VERTICAL RIGHT ANGLE, SNAP-IN, PC THRU-HOLE, .150" PITCH



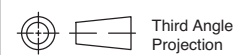
**AV1** VERTICAL RIGHT ANGLE, EXTENDED, PC THRU-HOLE, .150" PITCH



PC MOUNTING



Not available with JXX actuators and I seal.  
Terminal bend radii and lead-in manufacturing option.



Dimensions are shown: Inches (mm)  
Specifications and dimensions subject to change



29 Aug 18



# 8020 Series Snap-acting Momentary Pushbutton Switches

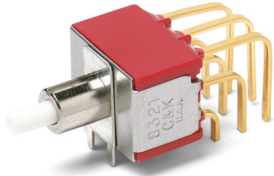
## TERMINATIONS



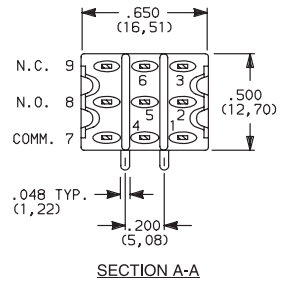
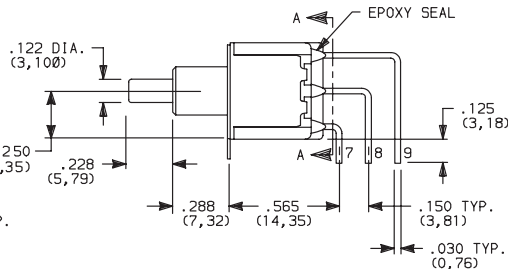
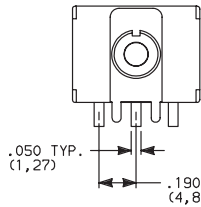
Pushbutton

A

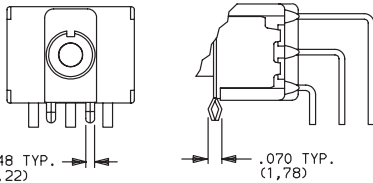
**AV2** VERTICAL RIGHT ANGLE, PC THRU-HOLE, 150° PITCH



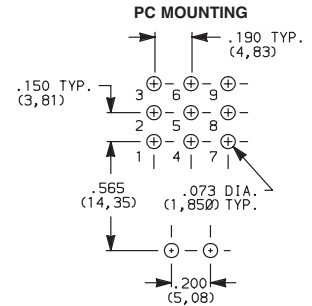
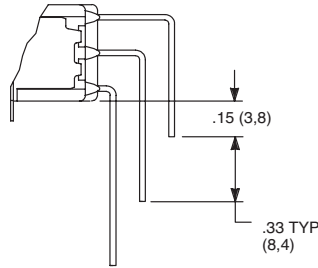
**8321SD9AV2GE**  
3PDT



**AV3** VERTICAL RIGHT ANGLE, SNAP-IN, PC THRU-HOLE, .150° PITCH

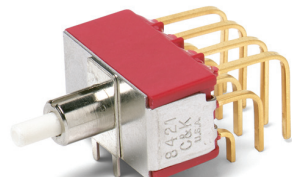


**AV1** VERTICAL RIGHT ANGLE, EXTENDED, PC THRU-HOLE, .150° PITCH

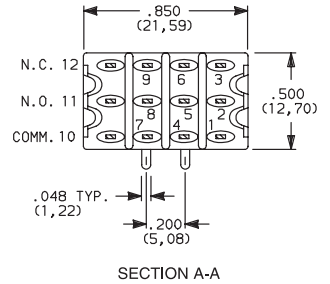
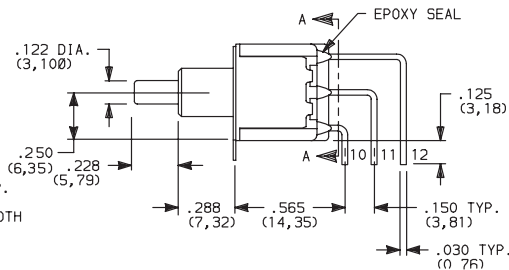
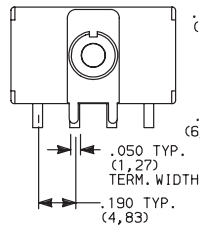


Not available with JXX actuators and I seal.  
Terminal bend radii and lead-in manufacturing option.

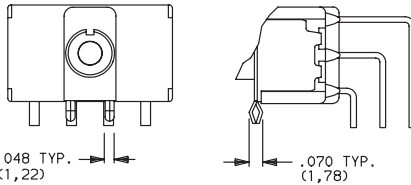
**AV2** VERTICAL RIGHT ANGLE, PC THRU-HOLE, 150° PITCH



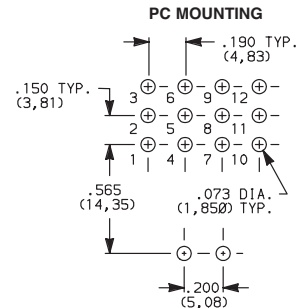
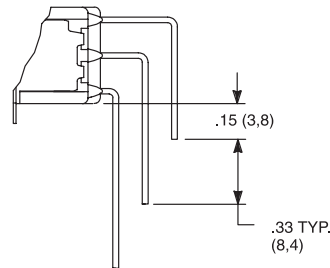
**8421SD9AV2GE**  
4PDT



**AV3** VERTICAL RIGHT ANGLE, SNAP-IN, PC THRU-HOLE, .150° PITCH



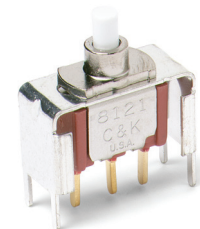
**AV1** VERTICAL RIGHT ANGLE, EXTENDED, PC THRU-HOLE, .150° PITCH



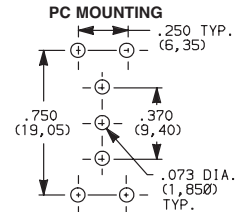
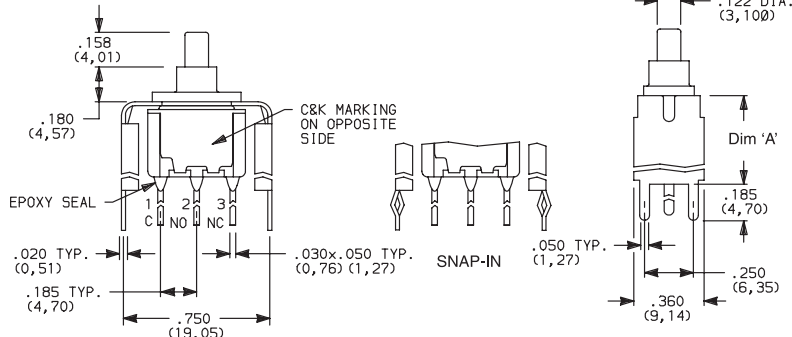
Not available with JXX actuators and I seal.  
Terminal bend radii and lead-in manufacturing option.

**V2, V6, V7, V8** VERTICAL MOUNT, V-BRACKET

**V61** VERTICAL MOUNT, V-BRACKET, SNAP-IN

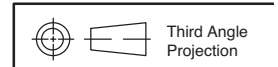


**8121SD3\_GE**  
SPDT



| OPTION CODE    | DIM 'A'      |
|----------------|--------------|
| <b>V2</b>      | .555 (14,10) |
| <b>V6, V61</b> | .460 (11,68) |
| <b>V7</b>      | .630 (16,00) |
| <b>V8</b>      | .953 (24,21) |

Not available with JXX actuators and I seal.



29 Aug 18

# 8020 Series Snap-acting Momentary Pushbutton Switches

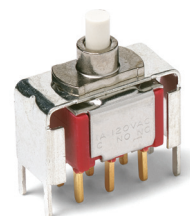
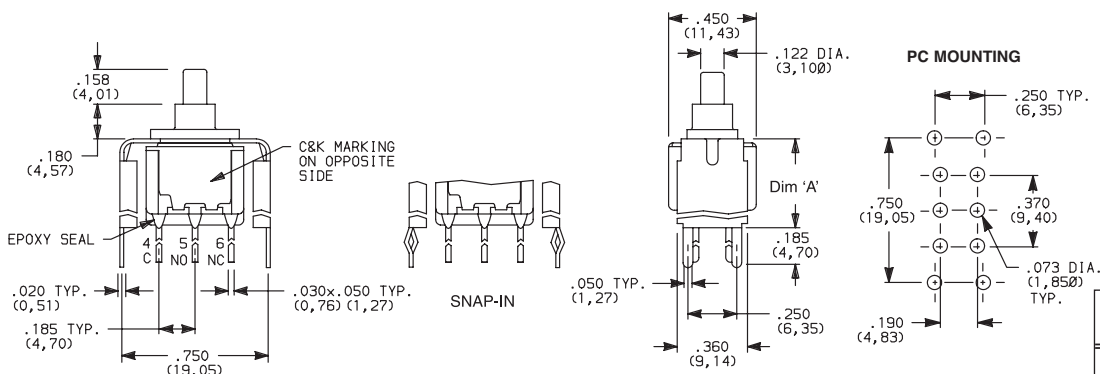


A Pushbutton

## TERMINATIONS

**V2, V6, V7, V8** VERTICAL MOUNT, V-BRACKET

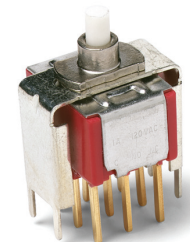
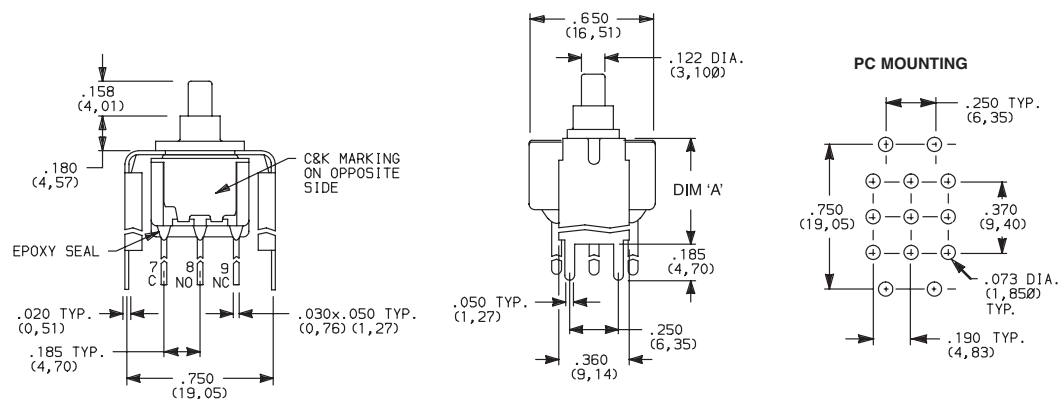
**V61** VERTICAL MOUNT, V-BRACKET, SNAP-IN



8221SD3\_GE DPDT

Not available with JXX actuators and I seal.

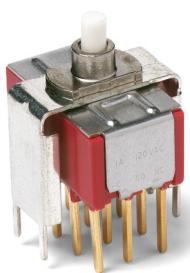
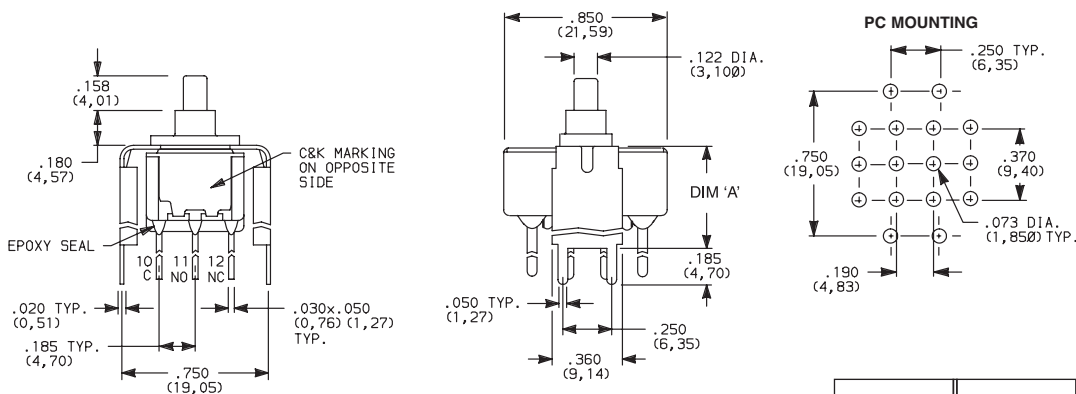
**V2, V7, V8** VERTICAL MOUNT, V-BRACKET



8321SD3\_GE 3PDT

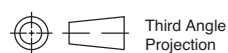
Not available with JXX actuators and I seal.

**V2, V7, V8** VERTICAL MOUNT, V-BRACKET



8421SD3\_GE 4PDT

Not available with JXX actuators and I seal.



29 Aug 18

Dimensions are shown: Inches (mm)  
Specifications and dimensions subject to change



# 8020 Series Snap-acting Momentary Pushbutton Switches

## TERMINATIONS

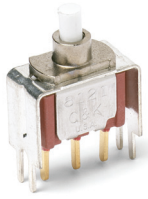


Pushbutton

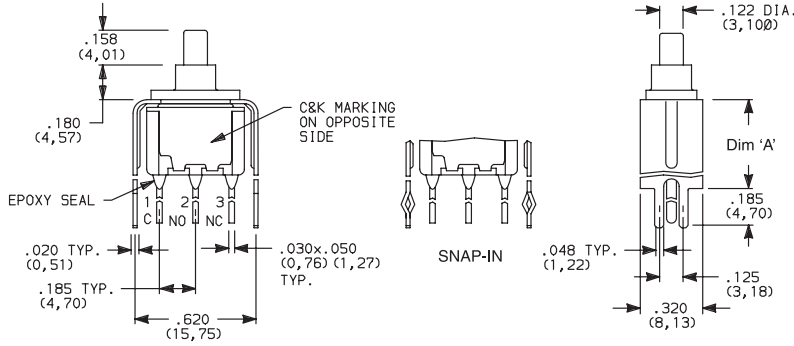
A

**V3, V4, V9** VERTICAL MOUNT, V-BRACKET

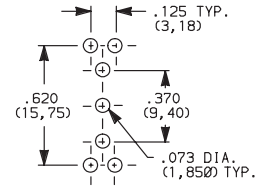
**V31** VERTICAL MOUNT, V-BRACKET, SNAP-IN



8121SD3\_GE  
SPDT



### PC MOUNTING

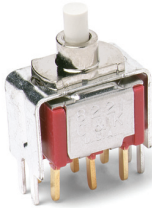


| OPTION CODE    | DIM 'A'       |
|----------------|---------------|
| <b>V3, V31</b> | .460 (11,68)  |
| <b>V4</b>      | .630 (16,00)  |
| <b>V9</b>      | 1.150 (29,21) |

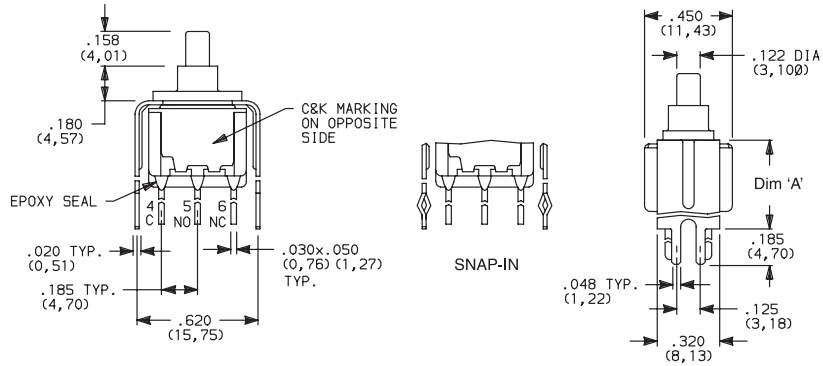
Not available with J8X actuators and I seal.

**V3, V4, V9** VERTICAL MOUNT, V-BRACKET

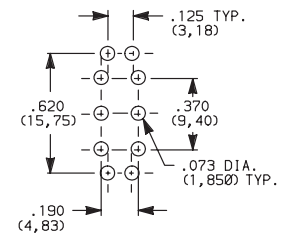
**V31** VERTICAL MOUNT, V-BRACKET, SNAP-IN



8221SD3\_GE  
DPDT



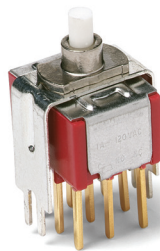
### PC MOUNTING



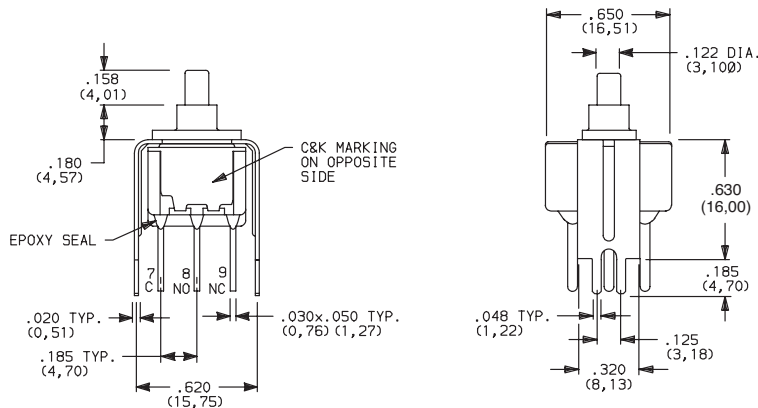
| OPTION CODE    | DIM 'A'       |
|----------------|---------------|
| <b>V3, V31</b> | .460 (11,68)  |
| <b>V4</b>      | .630 (16,00)  |
| <b>V9</b>      | 1.150 (29,21) |

Not available with J8X actuators and I seal.

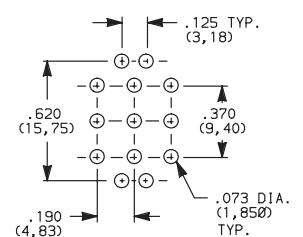
**V4, V9** VERTICAL MOUNT, V-BRACKET



8321SD3V4GE  
3PDT



### PC MOUNTING



| OPTION CODE | DIM 'A'       |
|-------------|---------------|
| <b>V4</b>   | .630 (16,00)  |
| <b>V9</b>   | 1.150 (29,21) |

Not available with JXX actuators and I seal.



29 Aug 18

Dimensions are shown: Inches (mm)  
Specifications and dimensions subject to change

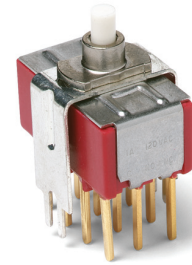
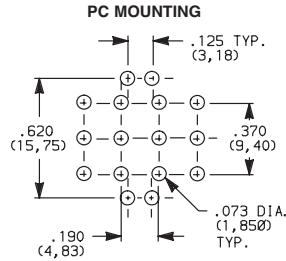
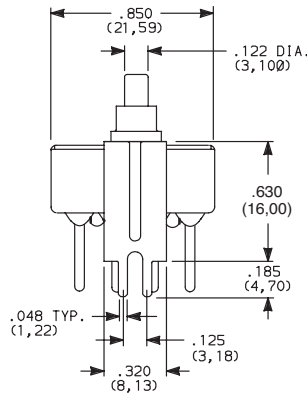
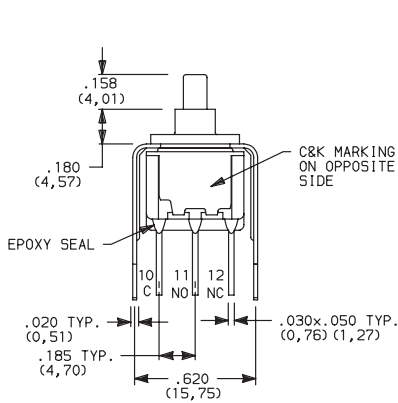
# 8020 Series Snap-acting Momentary Pushbutton Switches



A Pushbutton

## TERMINATIONS

**V4, V9** VERTICAL MOUNT, V-BRACKET



8421SD3V4GE  
4PDT

| OPTION CODE | DIM 'A'       |
|-------------|---------------|
| V4          | .630 (16,00)  |
| V9          | 1.150 (29,21) |

Not available with JXX actuators and I seal.

## CONTACT MATERIAL

| OPTION CODE | CONTACT MATERIAL                | TERMINAL PLATING       | RATINGS                        |   |
|-------------|---------------------------------|------------------------|--------------------------------|---|
| B           | GOLD <sup>1</sup>               | GOLD <sup>1</sup>      | LOW LEVEL/DRY CIRCUIT          | 8x25 MODELS ONLY: 0.4 MAX.<br>@ 20 V AC OR DC MAX.  |
| P           |                                 | MATTE-TIN <sup>4</sup> |                                |   |
| G           | GOLD OVER SILVER <sup>2,3</sup> | GOLD <sup>3</sup>      | LOW LEVEL/DRY CIRCUIT OR POWER | 8X21, U8X1 MODELS ONLY: 0.4 VA MAX<br>@ 20 V AC OR DC MAX. OR 1 AMP<br>@ 120 V AC OR 28 V DC. |
| R           |                                 | MATTE-TIN <sup>4</sup> |                                |   |

\* Note: See Technical Data section of this catalog for RoHS compliant and compatible definitions and specifications.

- <sup>1</sup> ALL CONTACTS & TERMINALS: Copper alloy, with gold plate over nickel plate.
- <sup>2</sup> N.O. AND N.C. CONTACTS: Coin silver, with gold plate over nickel plate.
- <sup>3</sup> COMMON CONTACTS & ALL TERMINALS: Copper alloy, with gold plate over nickel plate.
- <sup>4</sup> TERMINALS: Copper alloy, with matte-tin over nickel plate.

**NOTE:** Any models supplied with B, P, R or G contact material are RoHS compliant.

U811-U841 models with all options (except R, R2 terminations) when ordered with mandatory G or R contact material.

B or P contact material must be ordered with 8X25 models.

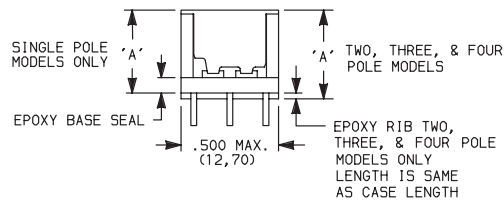
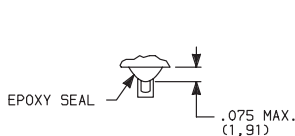
G or R contact material must be ordered with 8X21, U8X1 models.

P or R contact material not available with Z, Z3 terminations.

## SEAL

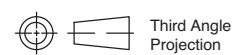
**E** EPOXY SEAL

**I** EPOXY POTTED BASE



| NO. POLES | DIM 'A'      |
|-----------|--------------|
| SP        | .410 (10,41) |
| DP        | .440 (11,18) |
| 3P        | .505 (12,83) |
| 4P        | .505 (12,83) |

**NOTE:** Available with C, W-W4, Z, Z3 terminations only.



29 Aug 18

Dimensions are shown: Inches (mm)  
Specifications and dimensions subject to change



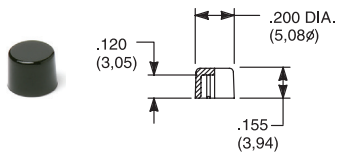
# 8020 Series Snap-acting Momentary Pushbutton Switches

Pushbutton

A

## AVAILABLE HARDWARE

Cap

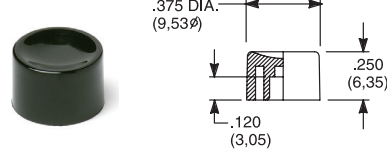


PART NO.

- 708901000** WHITE
- 708902000** BLACK
- 708903000** RED
- 708904000** ORANGE
- 708905000** YELLOW
- 708906000** GREEN
- 708907000** BLUE
- 708909000** GRAY

Material: Nylon  
Finish: Gloss

Cap

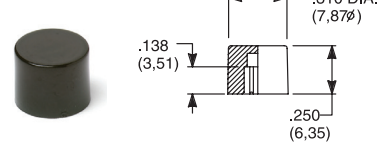


PART NO.

- 752701000** WHITE
- 752702000** BLACK
- 752703000** RED
- 752704000** ORANGE
- 752705000** YELLOW
- 752706000** GREEN
- 752707000** BLUE
- 752709000** GRAY

Material: Nylon  
Finish: Gloss

Cap

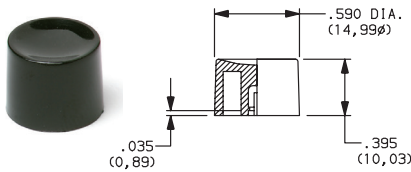


PART NO.

- 801801000** WHITE
- 801802000** BLACK
- 801803000** RED
- 801804000** ORANGE
- 801805000** YELLOW
- 801806000** GREEN
- 801807000** BLUE
- 801809000** GRAY

Material: Nylon  
Finish: Gloss

Cap, Snap-fitting plunger

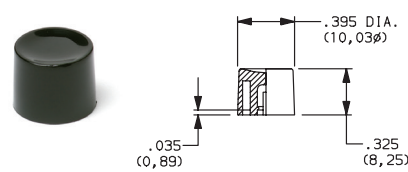


PART NO.

- 452D01000** WHITE
- 452D02000** BLACK
- 452D03000** RED
- 452D04000** ORANGE
- 452D05000** YELLOW
- 452D06000** GREEN
- 452D07000** BLUE
- 452D09000** GRAY

Material: Nylon  
Finish: Gloss

Cap, Snap-fitting plunger

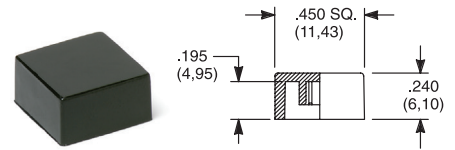


PART NO.

- 894101000** WHITE
- 894102000** BLACK
- 894103000** RED
- 894104000** ORANGE
- 894105000** YELLOW
- 894106000** GREEN
- 894107000** BLUE
- 894109000** GRAY

Material: Nylon  
Finish: Gloss

Cap, J80, J81, J82, J83 & J84 options only



PART NO.

- 484601000** WHITE
- 484602000** BLACK
- 484603000** RED
- 484604000** ORANGE
- 484605000** YELLOW
- 484606000** GREEN
- 484607000** BLUE
- 484609000** GRAY

Material: Nylon  
Finish: Gloss

PART NO.

- 798201000** WHITE
- 798202263** BLACK
- 798203000** RED
- 798204000** ORANGE
- 798205000** YELLOW
- 798206000** GREEN
- 798207000** BLUE
- 798209000** GRAY

Material: Nylon  
Finish: Matte

Frame



PART NO.

- 615602263** BLACK

Material: Nylon  
Finish: Matte

Frame

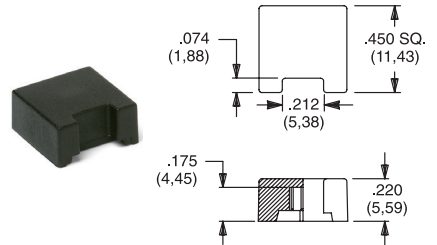


PART NO.

- 613302263** BLACK

Material: Nylon  
Finish: Matte

Cap, J85 & J95 options only



PART NO.

- 459701000**
- 459702000**
- 459703000**
- 459704000**
- 459705000**
- 459706000**
- 459707000**
- 459709000**

Material: Nylon  
Finish: Matte

Fits Z3 Termination female connector

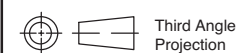
- PART NO.  
**530100000**

Available in loose pieces.



NOTE: Additional nuts, locking rings and lockwashers available separately, see section "Technical Data and Additional Hardware".

Other cap & frame colors available, consult Customer Service Center.



Dimensions are shown: Inches (mm)  
Specifications and dimensions subject to change



# 8020 Series Snap-acting Momentary Pushbutton Switches

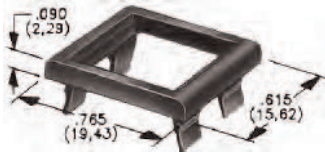
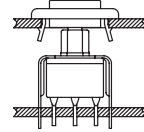


A Pushbutton

## AVAILABLE HARDWARE

Frames snap into panel opening and are independent from switch mounting. Accurate positioning of the PC mounted switch relative to the panel opening is necessary to provide proper clearance between actuator and frame. Available in two basic styles and four panel thicknesses .047-.125 in. Material: Nylon. Finish: Matte.

### TYPICAL APPLICATION



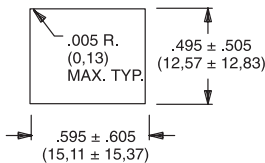
.090" (2,29) PANEL THK.    .125" (3,18) PANEL THK.

**PART NO.**  
**432702263**

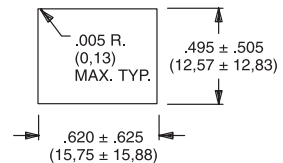
**PART NO.**  
**432802263** BLACK

### PANEL MOUNTING

For part numbers  
4325xxxxx, 4326xxxxx

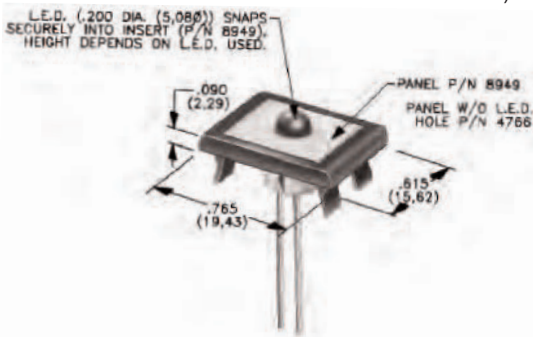


For part numbers  
4327xxxxx, 4328xxxxx



### Panel Inserts

Above frames (part nos. 432XXXXXX) are also available with insert which accepts LED for indicator light assembly. Order insert separately from frame. Blank insert panel (without hole for LED) also available. LED not included.



PANEL INSERT  
WITH HOLE FOR LED

**PART NO.**  
**894902000**

BLANK PANEL INSERT  
WITHOUT HOLE FOR LED

**PART NO.**  
**476602000** BLACK

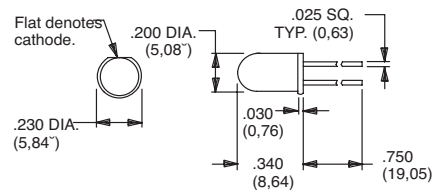
Special colors, custom markings available, consult Customer Service Center.

## LED INFORMATION

SWITCHES WITH LED SUPPLIED: J85, J95 OPTIONS:

Rectangular LEDs are supplied on 8020 Series pushbutton switches with J85 and J95 options. These LEDs are factory installed and are not replaceable. The following specifications apply:

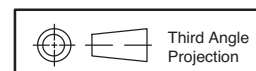
| OPTION CODE | COLOR  | TYP. INTENSITY | TYP. FORWARD VOLTAGE | TYP. FORWARD CURRENT | MAX RATINGS AT 25°C AMBIENT TEMPERATURE |                            |                   |
|-------------|--------|----------------|----------------------|----------------------|---|----------------------------|-------------------|
|             |        |                |                      |                      | FORWARD VOLTAGE                         | CONTINUOUS FORWARD CURRENT | POWER DISSIPATION |
| 6           | Green  | 1.0 mcd        | 2.1 V                | 20 mA                | 2.5 V                                   | 50 mA                      | 125 mW            |
| 3           | Red*   | 0.5 mcd        |                      | 10 mA                |   | 30 mA                      | 75 mW             |
| 5           | Yellow | 4.0 mcd        |                      | 20 mA                |   | 50 mA                      | 125 mW            |



Suggested LED for J82 & J84 options.  
Dimensions for reference only.

**Process Information:** Soldering to LED leads must be completed within 5 seconds at 500°F (260°C) maximum.

**Caution:** Circuit elements must limit forward current of LED to 50mA max. continuous. \* Extra-bright red LED available (typ. intensity 4.5 mcd), consult Customer Service Center. LEDs are not supplied with J82, J84 options. LED snaps into switch frame surrounding actuator and is wired externally.



Dimensions are shown: Inches (mm)  
Specifications and dimensions subject to change



29 Aug 18

## X-ON Electronics

Largest Supplier of Electrical and Electronic Components

*Click to view similar products for [Pushbutton Switches](#) category:*

*Click to view products by [C&K](#) manufacturer:*

Other Similar products are found below :

[LW1L-M1C10V-A](#) [LW2L-A1C20M-GD](#) [LW2L-M1C20M-A](#) [60324L](#) [M7E-HRN2](#) [67021K512](#) [67081K512X](#) [701PB580](#) [719-5504-000](#)  
[MDPSSGLFS](#) [810KSV30B](#) [FLT 2U EE 01A](#) [MML21KA3ABK](#) [MML23KA3AC05K-001](#) [MML23KW3AA01W](#) [8418K2](#) [8646AB6X718UL](#)  
[8646ABUL](#) [FSDWH](#) [9001KXRK](#) [9001T8BK](#) [9533CD4+U574+U4922](#) [1203MRA](#) [A22EM01S](#) [A595](#) [1202A6](#) [12037A2ULCSA](#) [1203A2UL](#)  
[ABD122N-B](#) [1211390004](#) [ABN111-Y](#) [ABN400-R](#) [1211500044](#) [1211580012](#) [1212MRA](#) [1232A6NF](#) [RA3CSH6A](#) [1241.1183.7047](#)  
[1241.2511](#) [1241.3428](#) [1223A2ULCSA](#) [1223MRA](#) [1232AX2119](#) [1241.1183.8000](#) [1241.1183.8029](#) [1241.2506](#) [1241.2606](#) [12MA6](#)  
[1301940184](#) [RELBARF6X10\(PLASTIC\)](#)