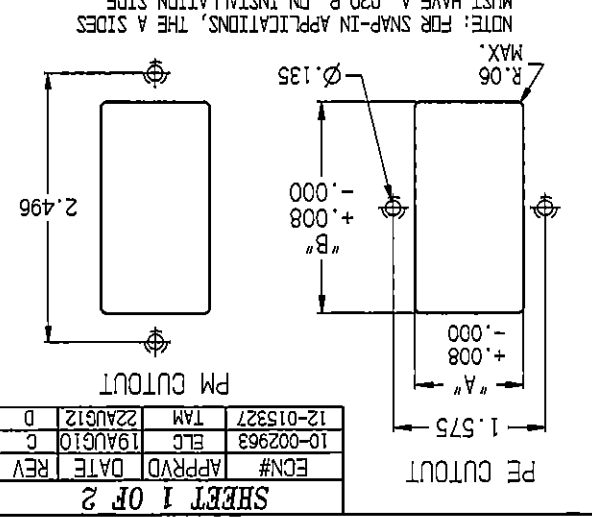
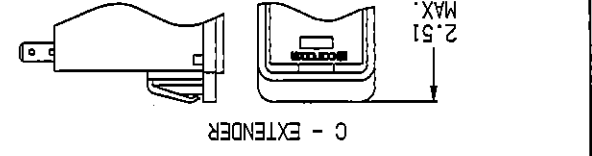


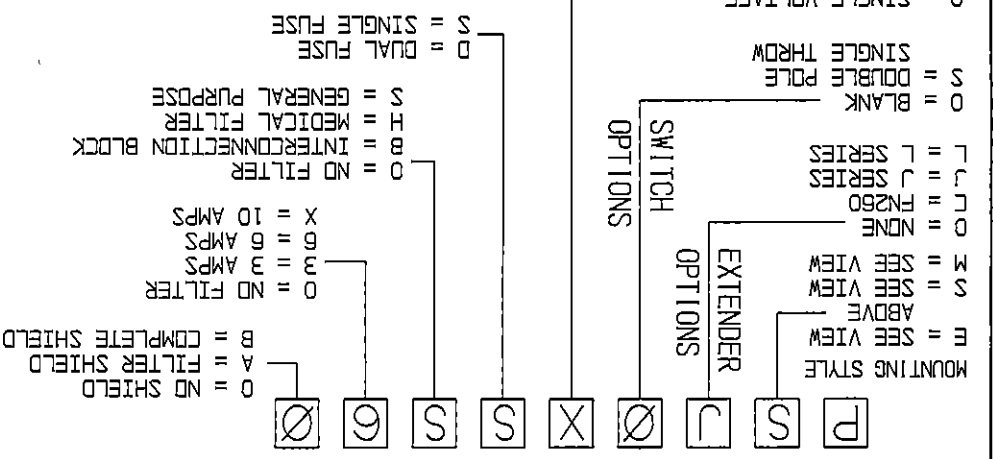
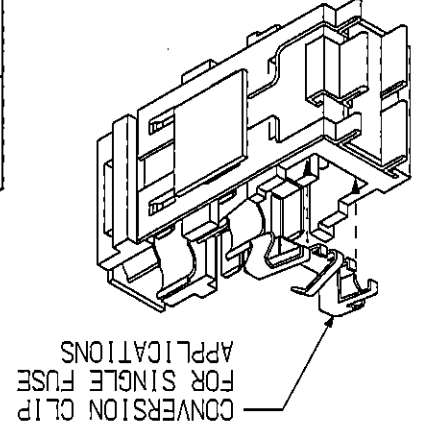
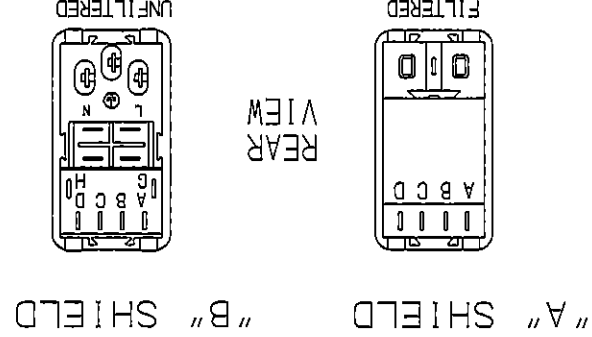
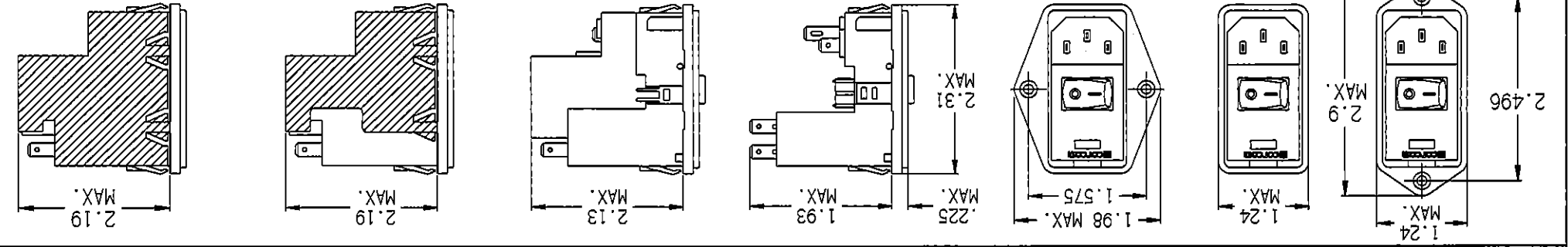
MINIMUM INSERTION LOSS IN DB  
LINE TO GROUND IN 50 OHM CIRCUIT

MINIMUM INSERTION LOSS IN DB  
LINE TO LINE IN 50 OHM CIRCUIT

| CURRENT  | FREQUENCY MHZ |     |    | CURRENT | FREQUENCY MHZ |    |    | STYLE | DIMENSION 'A' |            |          | DIMENSION B |
|--|---------------|-----|----|---------|---------------|----|----|-------|---------------|------------|----------|-------------|
|  | 0.15          | 0.5 | 1  |         | 3             | 5  | 10 |       | 30            | UNSHIELDED | SHIELDED |             |
| 3 AMP  | 21            | 27  | 30 | 29      | 26            | 23 | 15 | PSL   | 1.12          | 1.12       | 1.12     | 2.201 *     |
| 6 AMP  | 11            | 15  | 17 | 19      | 18            | 16 | 13 | PE    | 1.12          | 1.12       | 1.12     | 2.201 *     |
| 10 AMP   | 5             | 8   | 10 | 12      | 11            | 11 | 10 | PM    | 1.06          | 1.12       | 1.12     | 2.201 *     |
| 3 AMP  | 21            | 27  | 33 | 40      | 44            | 50 | 32 | PS    | 1.06          | 1.12       | 1.06     | 2.201 *     |
| 6 AMP  | 12            | 17  | 23 | 32      | 36            | 44 | 30 | PSC   | 1.06          | 1.12       | 1.06     | 2.201 *     |
| 10 AMP   | 5             | 10  | 13 | 23      | 27            | 35 | 27 | PSJ   | 1.06          | 1.12       | 1.06     | 2.201 *     |
| * FOR PANEL THICKNESS OF 0.031"-0.079" ONLY.<br>USE 2.213 FOR PANEL THICKNESS OF 0.083"-0.114" |               |     |    |         |               |    |    |       |               |            |          |             |



NOTE: FOR SNAP-IN APPLICATIONS, THE A SIDES MUST HAVE A .020 R. ON INSTALLATION SIDE.



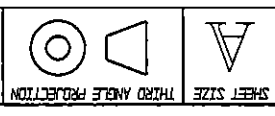
**Tyco Electronics**  
CONCOM PRODUCTS, 620 S. BUTTERFIELD RD., WUNDELEIN IL 60080

CUSTOMER DRAWING  
P-SERIES  
TYCO ELECTRONICS PART NO.

SCALE: 1:2  
DATE: 2-4-97  
DRW. BY: [REDACTED]  
REV. [REDACTED]

DRAWING NUMBER: P-SERIES  
REV. D

THIS INFORMATION IS CONFIDENTIAL AND PROPRIETARY TO TYCO ELECTRONICS CORPORATION AND ITS WORLDWIDE SUBSIDIARIES AND AFFILIATES. IT MAY NOT BE DISCLOSED TO ANYONE OTHER THAN TYCO ELECTRONICS PERSONNEL, WITHOUT WRITTEN AUTHORIZATION FROM TYCO ELECTRONICS CORPORATION.  
HARRISBURG, PENNSYLVANIA USA.



|           |       |         |     |
|-----------|-------|---------|-----|
| ECN#      | APPRD | DATE    | REV |
| 10-002963 | ELC   | 19AUG10 | C   |
| 12-015327 | TAM   | 22AUG12 | D   |



THIS INFORMATION IS CONFIDENTIAL AND PROPRIETARY TO TYCO ELECTRONICS CORPORATION AND ITS WORLDWIDE SUBSIDIARIES AND AFFILIATES. IT MAY NOT BE DISCLOSED TO ANYONE OTHER THAN TYCO ELECTRONICS PERSONNEL, WITHOUT WRITTEN AUTHORIZATION FROM TYCO ELECTRONICS CORPORATION, HARRISBURG, PENNSYLVANIA USA.

SCALE: NA  
DATE: 2/4/97  
ORIG: DRG

P-SERIES  
DRAWING NUMBER:

REV. D

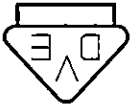
TYCO ELECTRONICS PART NO.

CUSTOMER DRAWING  
P-SERIES

CORCOM PRODUCTS, 620 S. BUTTERNUT RD., MUNDLEIN, IL 60060



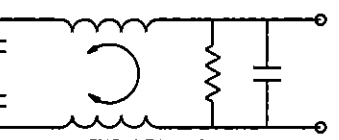
UL RECOGNIZED  
CSA CERTIFIED  
VDE APPROVED



THIS FILTER HAS BEEN FORMALLY RECOGNIZED, CERTIFIED OR APPROVED BY THE LISTED AGENCY. THEREFORE, ALL TEST/REQUIREMENTS SPECIFIED IN THE LATEST REVISION OF THE FOLLOWING AGENCY STANDARDS HAVE BEEN MET:

SAFETY ORGANIZATIONS

GENERAL NOTES:  
CONVERSION CLIP PROVIDED ON FUSEHOLDER FOR SINGLE FUSE MODELS.  
SWITCH: DOUBLE INSULATED RATED FOR 10,000 OPERATIONS AT FULL LOAD.  
51 AMP INRUSH CAPABILITY.  
TERMINALS: FOUR 0.187" x 0.032" QUICK CONNECT TABS  
ONE SOLDER TERMINAL



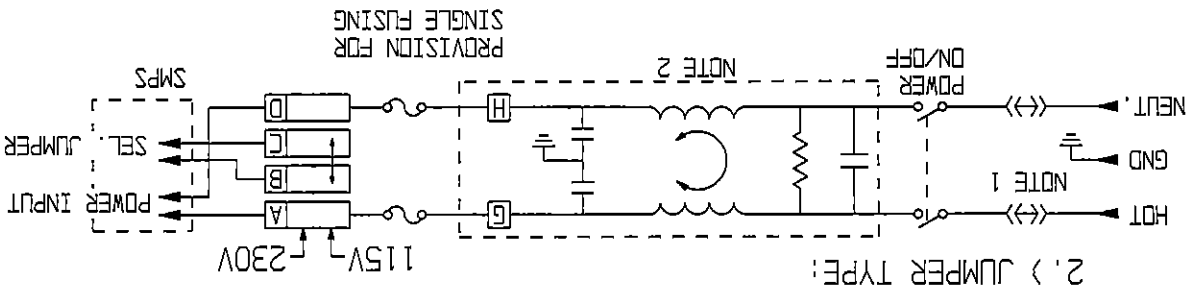
S MODEL



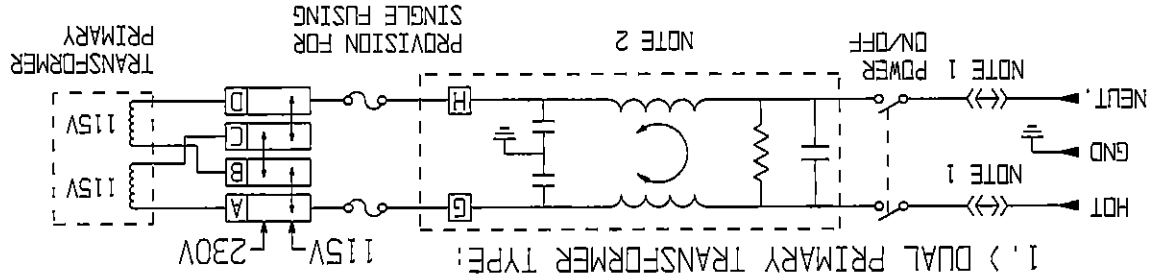
H MODEL

SEE INDIVIDUAL CUSTOMER DRAWINGS FOR OTHER (L AND Z) P-SERIES VERSIONS.

NOTE 1: JUMPERS ARE REQUIRED IF A FILTER OR INTERCONNECTION MODULE IS NOT USED.  
NOTE 2: LOCATION OF OPTIONAL FILTER, JUMPERS ARE REQUIRED IF A FILTER OR INTERCONNECTION MODULE IS NOT USED.



2.) JUMPER TYPE:



1.) DUAL PRIMARY TRANSFORMER TYPE:

RATED CURRENT, I<sub>R</sub>:

3, 6 & 10 AMP  
MODELS AVAILABLE

@ 250 VAC 50Hz:

S MODELS 0.50mA  
H MODELS 51A

@ 120 VAC 60Hz:

H MODELS 21A  
S MODELS 0.25mA

MAXIMUM LEAKAGE CURRENT, EACH LINE TO GROUND

NONFILTERED MODELS

RATED CURRENT, I<sub>R</sub>:

10A @ 120 VAC  
10A @ 250 VAC

HIPOT RATING (ONE MINUTE):  
LINE TO GROUND: 1500 VAC  
LINE TO LINE: 1450 VDC  
OPERATING FREQUENCY: 50/60 Hz  
RATED VOLTAGE: 120/250 VAC  
OPERATING VOLTAGES: 115/230 VAC  
SELECTABLE FUSEHOLDER ACCEPTS 1 OR 2 FUSES  
OR 5 x 20mm  
OPERATING AMBIENT TEMP.: -10°C TO +40°C  
STORAGE TEMPERATURE: -40°C TO +85°C  
HUMIDITY: 21 DAYS, 40°C @ 95% RH.  
CURRENT OVERLOAD TEST: 6 TIMES I<sub>R</sub> FOR 8 SECONDS

SPECIFICATIONS

## X-ON Electronics

Largest Supplier of Electrical and Electronic Components

*Click to view similar products for [AC Power Entry Modules](#) category:*

*Click to view products by [TE Connectivity](#) manufacturer:*

Other Similar products are found below :

[0098.0050](#) [6-1609987-9](#) [6167.0002](#) [7-6609955-2](#) [FN389-4-22](#) [FN9233ER-12-06](#) [FN9233S1-10-06](#) [FN9233S1-8-06](#) [FN9233S1B-8-06](#)  
[FN9233S1R-1-06](#) [FN9233S1R-12-06](#) [FN9233SB-1-06](#) [FN9233SB-12-06](#) [FN9233SB-8-06](#) [FN9233SR-10-06](#) [FN9233SR-3-06](#) [FN9244B-15-06](#)  
[HI](#) [FN9244EB-3-06](#) [FN9244EB-8-06](#) [FN9244ER-15-06](#) [FN9244ER-8-06](#) [FN9244ES1-8-06](#) [FN9244ESB-8-06](#) [FN9244EU-6-06](#)  
[FN9244R-12-06](#) [FN9244R-3-07](#) [FN9244R-8-06](#) [FN9244S1-10-06](#) [FN9244S1-12-06](#) [FN9244S1-3-06](#) [FN9244S1B-6-06](#) [FN9244S1R-3-06](#)  
[FN9244S-6-06](#) [FN9244SB-10-06](#) [FN9244SB-6-06](#) [FN9244SB-8-06](#) [FN9244SR-10-06](#) [FN9244SR-6-06](#) [FN9244U-3-06](#) [FN9244U-8-06](#)  
[FN9260A-6-06](#) [PE00SSSXB](#) [Fuse-H-EUR-1](#) [Fuse-H-USA-1](#) [PM00XD000](#) [PS0SSDBX0](#) [PS0SXSH3B](#) [A-0701-HT-H](#) [RAPC3FG](#) [15EJMS8](#)