

## Digital Mini Microscope

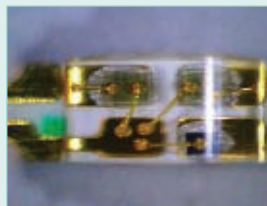
**✓ 1.8" TFT Color LCD Screen with 2MB Memory**  
 Capture and download up to 60 JPEG images (320x240 pixels) to your PC

### Features:

- 7x to 108x magnification range  
 Optical Zoom: 7x to 27x  
 Digital Zoom: 4x
- Three white LEDs with adjustable brightness for object illumination
- 5 Image Effect modes: Normal, Gray, Inverse, Emboss, and Dual Window View
- Dual Window View simultaneously displays the magnified image next to the original image
- Real-time imaging on your PC screen via USB interface and included software
- Includes microscope stand for hands-free viewing
- Dimensions: 4.7 x 2.2 x 0.8" (120 x 56 x 20mm)  
 Weight: 2.5oz (70g) without batteries
- Complete with stand, three AAA Ni-MH rechargeable batteries, 100 to 240VAC (50/60Hz) adaptor/charger, Windows<sup>®</sup> compatible PC software with mini USB cable, cleaning cloth, and wrist strap



PC board inspection



Soldering check



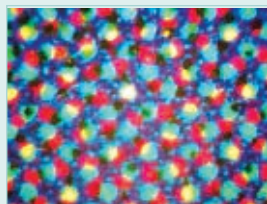
Plant research



Fingerprint verification



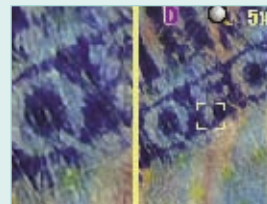
Fabric inspection



Analysis of printing



Check for counterfeit money



Dual Window view simultaneously displays magnified image next to the original image

### Ordering Information:

- MC108 .....Digital Mini Microscope (110V)
- MC108-2.....Digital Mini Microscope (220V)
- MC108-4.....Digital Mini Microscope (240V)



## X-ON Electronics

Largest Supplier of Electrical and Electronic Components

*Click to view similar products for [Environmental Test Equipment](#) category:*

*Click to view products by [Extech](#) manufacturer:*

Other Similar products are found below :

[CW40](#) [F150C10E3DRT](#) [F150LTC20](#) [F150CD10E2](#) [F150L75](#) [F150LRS](#) [S-11](#) [FLUKE-LDG](#) [382153](#) [FM100](#) [RH210](#) [382253](#) [MO290-P](#)  
[GEO-CABLE-REEL-50M](#) [T197914](#) [RD300-L](#) [IR11BD](#) [IR11GM](#) [IR12GM](#) [IR21BD](#) [IR31CE](#) [IR32BC](#) [IR33BC](#) [MP7217TC](#) [NGM-1](#) [SGX-](#)  
[7NH3](#) [UT381](#) [F150-SLC50](#) [AW-CO-1000](#) [AW-NmHc-100](#) [3.000.401](#) [AX-7535](#) [CS-9S6SS-A](#) [P 2800 A](#) [P 2801](#) [P 2802](#) [P 5039](#) [P 5130](#) [P](#)  
[5055](#) [P 5060](#) [P 5065](#) [P 5086](#) [P 5090](#) [P 5110](#) [P 5115](#) [P 5135](#) [P 5140](#) [P 5145](#) [P 5150](#) [P 5160](#)