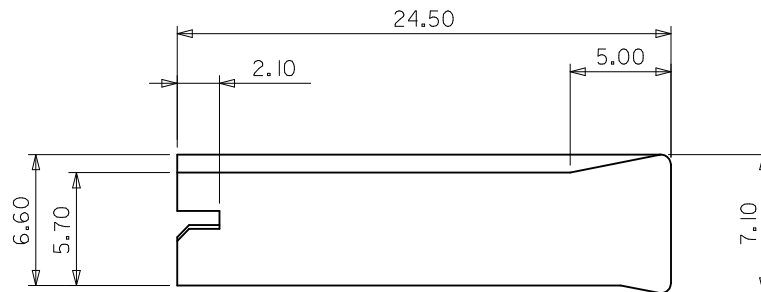
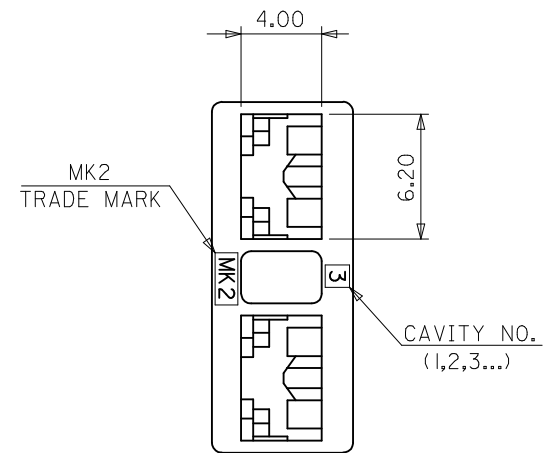
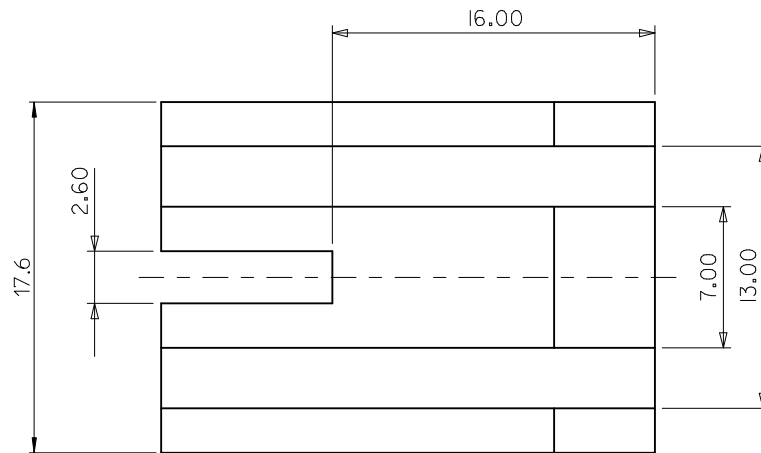
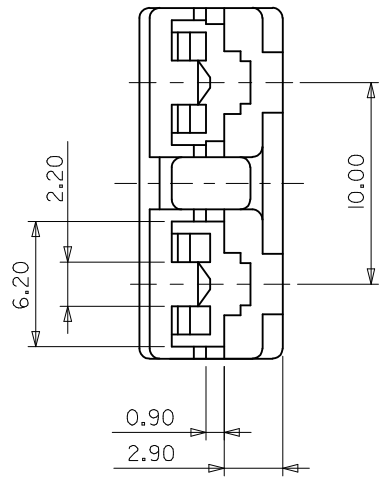


10 9 8 7 6 5 4 3 2 1



NOTES

1. MATERIALS : POLYAMIDE66, UNFILLED, UL94V-0; COLOR: NATURAL(WHITE)
2. PRODUCT SPECIFICATION: PS-35189-004
3. USE WITH: .187 MP-LOCK RECEPTACLE TERMINAL SERIES 35068

ENG NO. (MATERIAL NO.)	RIB TYPE	
35189-0281 (351890281)		BOTH RIB TYPE.
35189-7281 (351897281)		LEFT RIB TYPE.
35189-8281 (351898281)		RIGHT RIB TYPE.

REVISED EC NO: DRWN:JSSHIN CHKD:SHCHU APPR: B1	2012/12/21 2012/12/21	DESCRIPTION QUALITY SYMBOLS ▽=0 ◻=0	GENERAL TOLERANCES (UNLESS SPECIFIED)		DIMENSION STYLE MM ONLY		SCALE 4:1	DESIGN UNITS METRIC	THIRD ANGLE PROJECTION			
			mm	INCH	DRAWN BY	DATE	TITLE					
			4 PLACES ± ---	± ---	SK.HAN	2008/01/02	.187 MP-LOCK HOUSING -2P 10MM PITCH					
			3 PLACES ± ---	± ---	CHECKED BY	DATE	MOLEX INCORPORATED					
DRAFT WHERE APPLICABLE MUST REMAIN WITHIN DIMENSIONS		ANGULAR ± 1 °		APPROVED BY EH. JUNG 2008/01/02		MATERIAL NO. SEE TABLE		DOCUMENT NO. SD-35189-*281		SHEET NO. 1 OF 1		
				SIZE A3	THIS DRAWING CONTAINS INFORMATION THAT IS PROPRIETARY TO MOLEX INCORPORATED AND SHOULD NOT BE USED WITHOUT WRITTEN PERMISSION							

9 8 7 6 5 4 3 2 1

X-ON Electronics

Largest Supplier of Electrical and Electronic Components

Click to view similar products for [Headers & Wire Housings](#) category:

Click to view products by [Molex](#) manufacturer:

Other Similar products are found below :

[95000-104TRLF](#) [10135584-644402LF](#) [DF62W-EP2022PCA](#) [95000-106TRLF](#) [DF62W-2022SCA](#) [DF62W-EP2022PC](#) [2203348](#) [DF62W-2022SC](#) [1084018](#) [1029039](#) [1084017](#) [802-10-012-10-002000](#) [1112640](#) [1112639](#) [000-34000](#) [0009482033](#) [0009507031](#) [57102-S06-03LF](#) [57202-S52-04LF](#) [PCN6-15S-2.5E](#) [0039019024](#) [58102-G61-06LF](#) [582553-1](#) [0009485154](#) [0009508121](#) [0022285053](#) [0050291907](#) [018731A](#) [LY20-4P-DT1-P1E-BR](#) [02.125.8002.8](#) [60101931](#) [60598-1 \(Cut Strip\)](#) [M1625-3R/100](#) [61062-3](#) [61082-181009](#) [636-1427](#) [638009-1](#) [641938-9](#) [641991-4](#) [644168-1](#) [647662-1](#) [65039-019ELF](#) [65817-002LF](#) [65817-015LF](#) [65863-015LF](#) [66207-023LF](#) [67016-026LF](#) [67046-001LF](#) [67095-007LF](#) [67230-005LF](#)