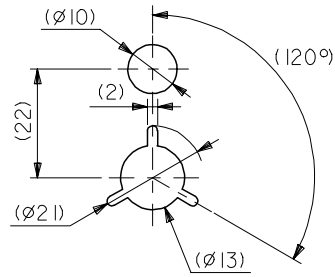
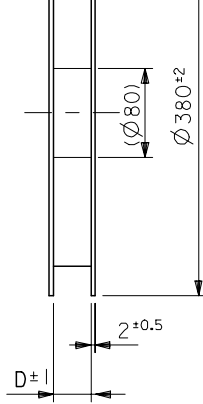
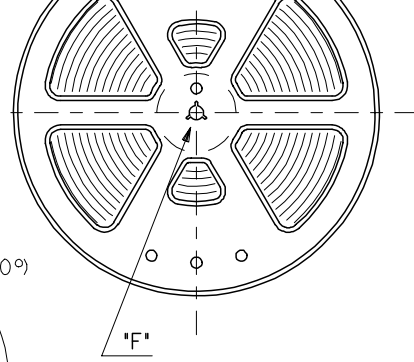




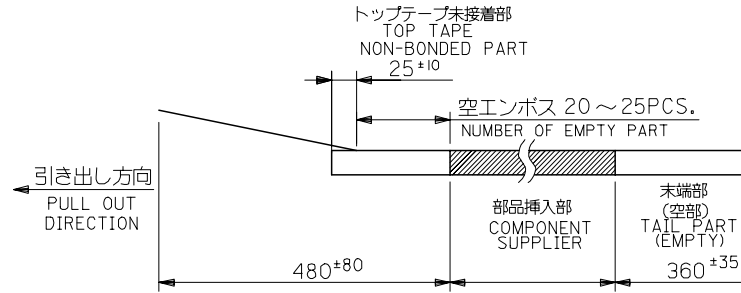
引き出し方向  
PULL OUT DIRECTION



DETAIL "F"



2. リードテープ長さ  
LEAD TAPE LENGTH

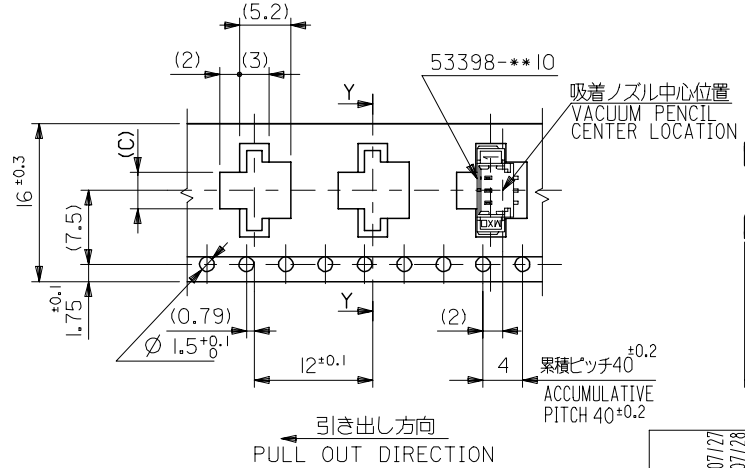


3. トップテープの剥離強度: 0.6±0.35N(60±35gf) (剥離方向は下図参照)  
PEELING OFF FORCE OF TOP TAPE: 0.6±0.35N(60±35gf) (PEELING DIRECTION IS SHOWN IN FOLLOWING FIG.)  
<剥離速度: 300mm/min (参考)>  
PEELING SPEED: 300mm/min. (REFERENCE)



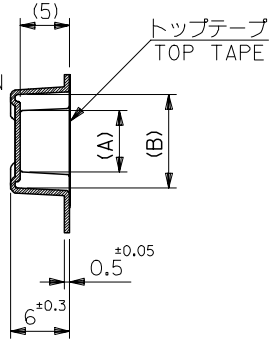
4. 53398-\*\*\*10 の詳細寸法については図面 SD-53398-\*\*\*10 を参照  
RE DETAILED DIMENSIONS, SEE SD-53398-\*\*\*10.

5. 材料 (MATERIAL)  
キャリアテープ (CARRIER TAPE): ポリプロピレン (POLYPROPYLENE)  
トップテープ (TOP TAPE): PET, PE, PEF  
リール (REEL): ポリスチレン (PS) <リサイクル材含む>  
POLYSTYRENE (PS) <RECYCLE MATERIAL CONTAINED>



引き出し方向  
PULL OUT DIRECTION

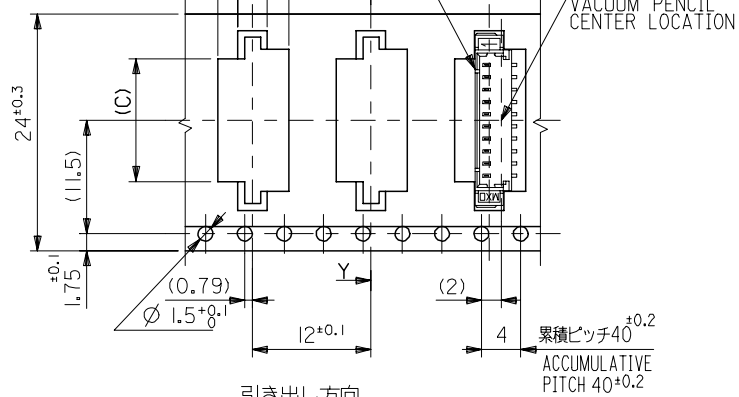
16幅テープ  
(TAPE WIDTH: 16)



SECT: Y-Y

|                                |      |      |      |      |         |
|--------------------------------|------|------|------|------|---------|
| 16                             | 17.4 | 3.7  | 9.5  | 5.8  | 53398-0 |
| キャリアテープ幅<br>CARRIER TAPE WIDTH | D    | (C)  | (B)  | (A)  | ENG. N  |
|                                |      | 2.45 | 8.25 | 4.55 | 53398-0 |

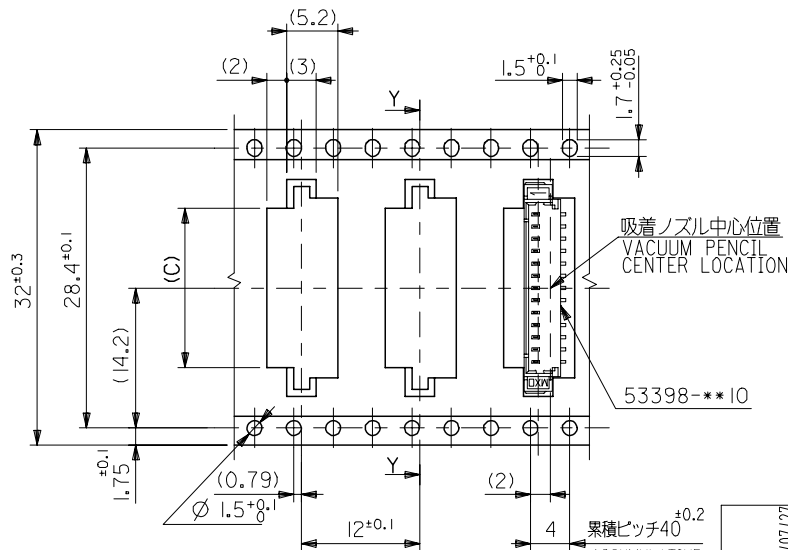
|   |  |  |       |                            |  |   |       |  |
|---|--|--|-------|----------------------------|--|---|-------|--|
| REVISED<br>EC NO:<br>DRAWN: MERICHI<br>CHKD: ASAKAW<br>APP: SICHIKAW<br>REV | 2004/07/27<br>2004/07/28<br>2004/07/30 | GENERAL TOLERANCES<br>(UNLESS SPECIFIED)                   |       | DIMENSION STYLE<br>MM ONLY | SCALE<br>---   | DESIGN UNITS<br>METRIC  | TH PR |  |
|   |  | 10 UNDER   | ±0.2  | DRAWN BY<br>K. TOJO        | DATE<br>'93/04/13  | TITLE<br>1.25 W/B CONN. WA<br>ASS'Y FOR SMT<br>EMBOSSSED TAPE PAC |       |  |
|   |  | 10 OVER 30 UNDER   | ±0.25 | CHECKED BY<br>YAMAGUCHI    | DATE<br>'00/12/08  |   |       |  |
|   |  | 30 OVER  | ±0.3  | APPROVED BY<br>FUKUSHIM    | DATE<br>'00/12/08  |   |       |  |
|   |  | ANGULAR  | ±3 °  | MATERIAL NO.<br>SEE CHART  | DOCUMENT NO.<br>SD-53398-***90   |   |       |  |
|   |  | DRAFT WHERE APPLICABLE<br>MUST REMAIN<br>WITHIN DIMENSIONS |       | SIZE<br>A3                 | THIS DRAWING CONTAINS INFORMATION THAT IS PROPRIETARY<br>INCORPORATED AND SHOULD NOT BE USED WITHOUT WRITING |   |       |  |



引き出し方向  
PULL OUT DIRECTION

24幅テープ  
(TAPE WIDTH:24)

SECT:Y-Y



引き出し方向  
PULL OUT DIRECTION

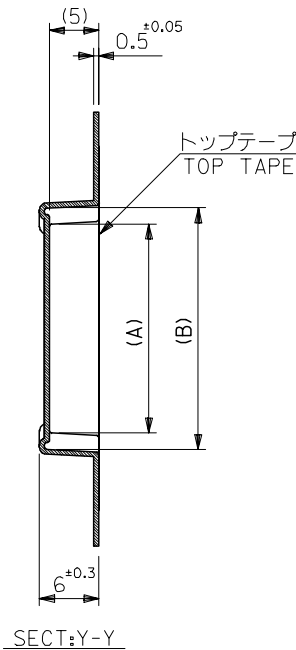
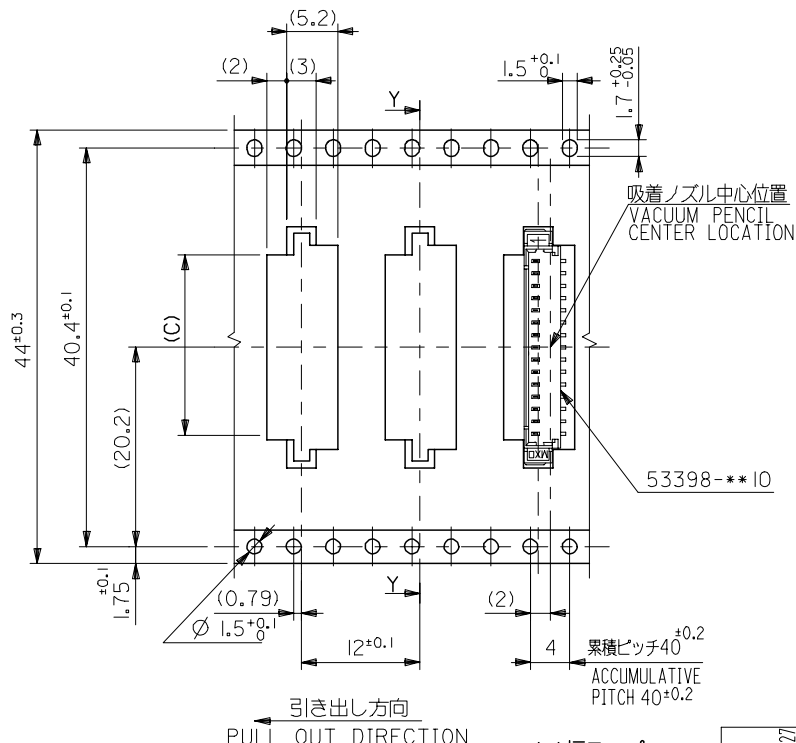
32幅テープ  
(TAPE WIDTH:32)

SECT:Y-Y

トップテープ  
TOP TAPE

|                                |      |       |       |       |         |         |        |
|--------------------------------|------|-------|-------|-------|---------|---------|--------|
| 32                             | 33.4 | 16.2  | 22    | 18.3  | 53398-I |         |        |
|                                |      | 14.95 | 20.75 | 17.05 | ▲ -I    |         |        |
| 24                             | 25.4 | 12.45 | 18.25 | 14.55 | -I      |         |        |
|                                |      | 11.2  | 17    | 13.3  | -C      |         |        |
|                                |      | 9.95  | 15.75 | 12.05 | -C      |         |        |
|                                |      | 8.7   | 14.5  | 10.8  | -C      |         |        |
|                                |      | 7.45  | 13.25 | 9.55  | -C      |         |        |
|                                |      | 6.2   | 12    | 8.3   | ▼ -C    |         |        |
| キャリアテープ幅<br>CARRIER TAPE WIDTH |      | D     | (C)   | (B)   | (A)     | 53398-C | ENG. N |

|  |  |       |                            |   |   |       |
|--|--|-------|----------------------------|---|---|-------|
| REVISED<br>EC NO:<br>T<br>DRAWN:MERIGUCHI<br>CHKD:K. ASAKAWA<br>APP:R.S. CHIKAWA<br>2004/07/27<br>2004/07/28<br>2004/07/30 | GENERAL TOLERANCES<br>(UNLESS SPECIFIED)                   |       | DIMENSION STYLE<br>MM ONLY | SCALE<br>---  | DESIGN UNITS<br>METRIC                      | TH PR |
|  | 10 UNDER   | ±0.2  | DRAWN BY<br>K. TOJO        | DATE<br>'93/04/13   | TITLE<br>1.25 W/B CONN. WA<br>ASS'Y FOR SMT |       |
|  | 10 OVER 30 UNDER   | ±0.25 | CHECKED BY<br>YAMAGUCHI    | DATE<br>'00/12/08   | EMBOSSSED TAPE PAC                          |       |
|  | 30 OVER  | ±0.3  | APPROVED BY<br>FUKUSHIM    | DATE<br>'00/12/08   | MOLEX INCORPOR                              |       |
|  | ANGULAR  | ±3 °  | MATERIAL NO.<br>SEE CHART  | DOCUMENT NO.<br>SD-53398-**90   |   |       |
|  | DRAFT WHERE APPLICABLE<br>MUST REMAIN<br>WITHIN DIMENSIONS |       | SIZE<br>A3                 | THIS DRAWING CONTAINS INFORMATION THAT IS PROPRIETARY<br>INCORPORATED AND SHOULD NOT BE USED WITHOUT WRIT |   |       |



44幅テープ  
(TAPE WIDTH:44)

|                                |      |      |      |      |         |
|--------------------------------|------|------|------|------|---------|
| 44                             | 45.4 | 18.7 | 24.5 | 20.8 | 53398-I |
| キャリアテープ幅<br>CARRIER TAPE WIDTH | D    | (C)  | (B)  | (A)  | ENG. N  |

|   |                                       |                     |   |                   |              |       |
|---|---------------------------------------|---------------------|---|-------------------|--------------|-------|
| REVISED<br>EC NO: 2004/07/27<br>DRAWN: MERICHI GUCH<br>CHYDK: ASAKAW<br>APPR: SICHIKAW<br>ZCHIKAW<br>2004/07/30 | GENERAL TOLERANCES (UNLESS SPECIFIED) |                     | DIMENSION STYLE   | SCALE             | DESIGN UNITS | TH PR |
|   | 10 UNDER ±0.2                         |                     | MM ONLY   | ---               | METRIC       | ◎ □   |
|   | 10 OVER 30 UNDER ±0.25                |                     | DRAWN BY DATE   | TITLE             |              |       |
|   | 30 OVER ±0.3                          |                     | K.TOJO '93/04/13  | 1.25 W/B CONN. WA |              |       |
| ANGULAR ±3 °  |                                       | CHECKED BY DATE     | ASS'Y FOR SMT   |                   |              |       |
| DRAFT WHERE APPLICABLE MUST REMAIN WITHIN DIMENSIONS  |                                       | YAMAGUCHI '00/12/08 | EMBOSSSED TAPE PAC  |                   |              |       |
|   |                                       | APPROVED BY DATE    | MOLEX INCORPORATED  |                   |              |       |
|   |                                       | FUKUSHIM '00/12/08  | MOLEX INCORPORATED  |                   |              |       |
|   |                                       | MATERIAL NO.        | DOCUMENT NO.  |                   |              |       |
|   |                                       | SEE CHART           | SD-53398-***90  |                   |              |       |
|   |                                       | SIZE A3             | THIS DRAWING CONTAINS INFORMATION THAT IS PROPRIETARY AND SHOULD NOT BE USED WITHOUT WRITTEN PERMISSION |                   |              |       |

## X-ON Electronics

Largest Supplier of Electrical and Electronic Components

*Click to view similar products for [Headers & Wire Housings](#) category:*

*Click to view products by [Molex](#) manufacturer:*

Other Similar products are found below :

[95000-104TRLF](#) [10135584-644402LF](#) [DF62W-EP2022PCA](#) [95000-106TRLF](#) [DF62W-2022SCA](#) [DF62W-EP2022PC](#) [2203348](#) [DF62W-2022SC](#) [1084018](#) [1029039](#) [1084017](#) [802-10-012-10-002000](#) [1112640](#) [1112639](#) [000-34000](#) [0009482033](#) [0009507031](#) [57102-S06-03LF](#) [57202-S52-04LF](#) [PCN6-15S-2.5E](#) [0039019024](#) [58102-G61-06LF](#) [582553-1](#) [0009485154](#) [0009508121](#) [0022285053](#) [0050291907](#) [018731A](#) [LY20-4P-DT1-P1E-BR](#) [02.125.8002.8](#) [60101931](#) [60598-1 \(Cut Strip\)](#) [M1625-3R/100](#) [61062-3](#) [61082-181009](#) [636-1427](#) [638009-1](#) [641938-9](#) [641991-4](#) [644168-1](#) [647662-1](#) [65039-019ELF](#) [65817-002LF](#) [65817-015LF](#) [65863-015LF](#) [66207-023LF](#) [67016-026LF](#) [67046-001LF](#) [67095-007LF](#) [67230-005LF](#)