

Interactive Catalog Supplements Catalog PDFs

If you need detailed product information, or help choosing the right product for your application, see our [Interactive Catalog](#). Use the [Interactive Catalog](#) to access the most complete and up-to-date information available.

The [Interactive Catalog](#) provides an extensive collection of product specifications, application data, and technical literature that can be searched based on criteria you select.

This PDF catalog information was published in November 2000.



Sensing and Control
[Interactive Catalog...](#)

**Click this icon to try
the Interactive Catalog.**

Sensing and Control

Honeywell Inc.

11 West Spring Street

Freeport, IL 61032

| Mounting Style | Keyway | Opposite Keyway | of Poles | Types Contacts | Solder Terminals | "T" Terminals | "T2" Terminals |
|--------------------------------|--------|-----------------|----------|----------------|------------------|--------------------|----------------------|
| 1/4" Bushing With Key Tab | Maint. | Maint. | 1 | Silver | 6AT2 | 6AT2-T 6AT68-T* | 6AT2-T2 6AT68-T2* |
| | | | | Gold | 6AT23 | | 6AT23-T2 |
| | | | 2 | Silver | 6AT3 | 6AT3-T | 6AT3-T2 |
| | | | | Gold | — | 6AT13-T | 6AT13-T2 |
| | | | 3 | Silver | 6AT501 | 6AT501-T | |
| | | | | | | | |
| 1/4" Bushing Without Key Tab | Maint. | Maint. | 1 | Silver | 6AT1 | 6AT1-T | 6AT1-T2 |
| | | | | Gold | | | 6AT56-T2 |
| | | | 2 | Silver | 6AT4 | — | 6AT4-T2 |
| 1/4" Bushing With Key Washer | Maint. | Maint. | 1 | Silver | | 6AT201-T | |
| | | | 2 | Gold | | | 6AT231-T2 |
| 15/32" Bushing With Key Washer | Maint. | Maint. | 1 | Silver | 6AT6 | 6AT6-T | 6AT6-T2 |
| | | | | Gold | 6AT17 | | 6AT17-T2 |
| | | | 2 | Silver | 6AT7 | 6AT7-T | |
| | | | | Gold | 6AT42 | | 6AT42-T2 |
| | | | 3 | Silver | 6AT10 | 6AT10-T | 6AT10-T2 |
| | | | | Gold | 6AT18 | | 6AT18-T2 |

* Extra long toggle lever (.67"/17,0 mm).

Toggle/Rockers

2-POSITION ORDER GUIDES

| | | No. of Poles | Type Contacts | Standard Lever | | | Tab Lever "T2" Terminals | Pull-To-Unlock Lever Solder Terminals (Add locking letter ① to cat. listings below) | |
|--------|-----------------|--------------|---------------|------------------|------------------|-------------------|--------------------------------|----------------------------------------------------------------------------------------------|--------------------------------|
| Keyway | Opposite Keyway | | | Solder Terminals | "T" Terminals | "T2" Terminals | | 23AT1- | 23AT11- |
| Maint. | Maint. | 2 | Silver | 23AT1 | 23AT1-T | 23AT1-T2 | 23AT402-T2 | 23AT1- | Locking letters: D, F, or G |
| | | | Gold | 23AT11 | | 23AT11-T2 | | 23AT11- | |
| | | 3 | Silver | 23AT2 | 23AT2-T | 23AT2-T2 | | 23AT2- | |
| | | | Gold | 23AT12 | | 23AT12-T2 | | 23AT12- | |
| | | 4 | Silver | 23AT3 | 23AT3-T | 23AT3-T2 | | 23AT3- | |
| | | | Gold | 23AT8 | | | | | |
| Mom. | Maint. | 2 | Silver | 23AT4 | 23AT4-T | 23AT4-T2 | 23AT403-T2 | | |
| | | | Gold | 23AT19 | | | | | |
| | | 3 | Silver | 23AT5 | | | | | |
| | | | Gold | | | | | | |
| | | 4 | Silver | 23AT6 | | 23AT6-T2 | | | |
| | | | Gold | | | | | | |

① See locking chart on next page.

MIL-S-8805/26 Versions

| Toggle Lever Position | | No. of Poles | Type Contacts | Standard Lever "T2" Terminals | | Tab Lever "T2" Terminals | |
|-----------------------|-----------------|--------------|---------------|----------------------------------|--------------|-----------------------------|--------------|
| Keyway | Opposite Keyway | | | Catalog Listing | Military No. | Catalog Listing | Military No. |
| Maint. | Maint. | 2 | Silver | 23AT73-T2 | M8805/26-001 | 23AT473-T2 | M8805/26-003 |
| | | 4 | Silver | 23AT74-T2 | M8805/26-002 | 23AT474-T2 | M8805/26-004 |

| | | | | | | | | |
|--------|--------|--------|---|--------|------------|--------------|------------|--------------|
| Maint. | Maint. | Maint. | 2 | Silver | 13AT272-T2 | M8805/26-007 | 13AT472-T2 | M8805/26-012 |
| | | | 3 | Silver | 13AT275-T2 | M8805/26-013 | | |
| Maint. | Maint. | Mom. | 2 | Silver | 13AT273-T2 | M8805/26-009 | 13AT473-T2 | M8805/26-010 |

LEVER-TO-BUSHING SEAL OPTION

A splash type lever-to-bushing seal can be provided to help prevent the entrance of moisture and dust behind the panel, or into the contact area. To specify 2-position switches with lever-to-bushing seals, change the 23AT catalog listing prefix to 32AT. Example: **32AT1** is a sealed 23AT1.

Convert 3-position catalog listings by changing the 13AT prefix to 31AT. Example: **31AT2-T** is a sealed 13AT2-T.



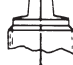










HERMETICALLY SEALED BASIC SWITCH OPTION

AT's with $15/32$ " bushings can be furnished with HM or HS hermetically sealed basic switches, which have metal-to-metal fusion around the cover, actuator base and mounting holes. Terminals are sealed glass-to-metal. The $1/4$ " bushing 6AT design can also be provided with HM basic switches. For more information, contact the 800 number.

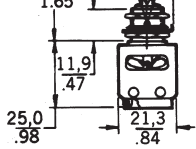


Shown with HM basic switches

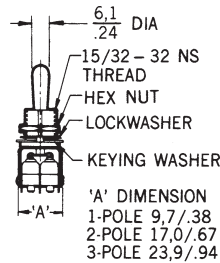
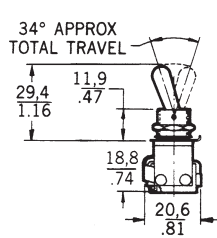
LOCKING CONFIGURATIONS

| | | | | | | |
|----------------------------------------------------------------------------------------------------------------------------------------------------------------------|-------------------------------------------------------------------------------------------------------------------------------------------------------------------|-----------------------------------------------------------------------------------------------------------------------------------------------------|---------------------------------------------------------------------------------------------------------------------------------------------------------------------|----------------------------------------------------------------------------------------------------------------------------------------------------------|-------------------------------------------------------------------------------------------------------------------------------------------------------------------|---------------------------------------------------------------------------------------------------------------------------------------------------------------------|
| A  Locked In Three Positions | B  Locked In Center and Extreme Position (Keyway Side) | D  Locked Out Of Center Position | E  Locked In Center Position | F  Locked In Extreme Position (Opposite Keyway) | G  Locked In Extreme Position (Keyway Side) | H  Locked Out Of Center And Extreme Position (Keyway Side) |
| J  Locked Out Of Center And Extreme Position (Opposite Keyway) | K  Locked In Center And Extreme Position (Opposite Keyway) | L  Locked Out Of Extreme Position (Keyway Side) | M  Locked Out Of And Into Extreme Position (Opposite Keyway) | N  Locked Out Of Extreme Position (Opposite Keyway) | P  Locked Out Of And Into Extreme Position (Keyway Side) | |

Toggle/Rockers

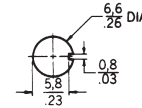


6AT

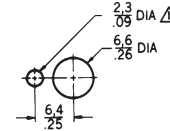


PANEL CUTOUTS

1/4" Bushing

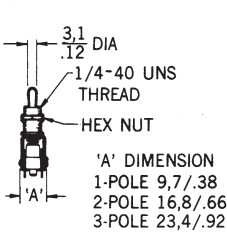
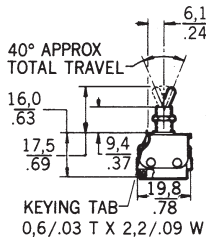


Without
Locking Ring

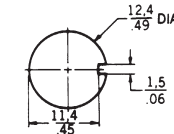


With
Locking Ring

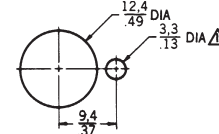
NOTE -
△ 1.1/.05 MIN DEEP TO
ACCOMMODATE LOCKING RING



15/32" Bushing



Without
Locking Ring



With
Locking Ring

NOTE -
△ 1.4/.06 MIN DEEP TO
ACCOMMODATE LOCKING RING

Bushing mounting torque is 10-15 in./lbs.

NOTE—
64AT300, 66AT300, and 68AT300 (M8805/98) listings have a bushing seal and MS25196 panel seal.

X-ON Electronics

Largest Supplier of Electrical and Electronic Components

Click to view similar products for [Toggle Switches](#) category:

Click to view products by [Honeywell](#) manufacturer:

Other Similar products are found below :

[8A1-C-222](#) [60012L](#) [6006L](#) [6663](#) [7101MD9V30GE](#) [7101SPDV30BE](#) [7103SDV30BE](#) [7105D](#) [7108P3YAV2BE](#) [71YY50282](#)
[7201MD9AVBE](#) [7301K38](#) [7306K36](#) [7310K36](#) [7314K36](#) [7506K4](#) [7592K6](#) [7691K14](#) [7700K1](#) [8396K108](#) [8824K14](#) [8828K13](#) [G2VX](#) [G3VX](#)
[PS83-121G](#) [A101MD9AB04](#) [A101SD9AB04](#) [A101SDCQ04](#) [A103SD9AQ04](#) [A107TZB04](#) [A123P32YZQ](#) [A123S1YZG](#) [A127S1YCQ](#) [1-](#)
[1825192-0](#) [A131S1YZQ](#) [A201SCWZB04](#) [A207SYCB04](#) [A208J61ZQ0004](#) [A221K12KAG](#) [A221S1YZQ](#) [A221T1TCQ](#) [A232K12KZQ](#)
[A232M1YCQ](#) [A323S1CWZQ](#) [A423S1CWZG-M8](#) [A423S1YZQ](#) [12149A-3V](#) [12156AX408](#) [12147AGKX679](#) [12149AD2G0383VX408](#)