

Interactive Catalog Supplements Catalog PDFs

If you need detailed product information, or help choosing the right product for your application, see our [Interactive Catalog](#). Use the [Interactive Catalog](#) to access the most complete and up-to-date information available.

The [Interactive Catalog](#) provides an extensive collection of product specifications, application data, and technical literature that can be searched based on criteria you select.

This PDF catalog information was published in November 2000.



Sensing and Control
[Interactive Catalog...](#)

**Click this icon to try
the Interactive Catalog.**

Sensing and Control

Honeywell Inc.

11 West Spring Street

Freeport, IL 61032

power duty switching—for electrical versatility.

- Temperature range: -18° to 65°C (0° to 149°F).

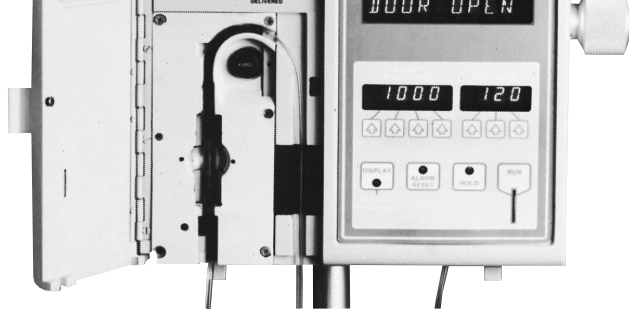
● MOUNTING FLEXIBILITY

Printed wiring board (PWB) mounted switches can be arranged in individual panel openings or multi-unit strips, in a common panel cutout. Optional support brackets provide added rigidity for stand-alone PWB mounted devices. Units with bezels and mounting clips can be snap-in mounted from the panel front.

Single level PWB or solder/quick-connect termination throughout makes wiring faster, easier, and more economical. Housings are designed to accommodate washing, before and after wave soldering, to help prevent contamination during printed wiring board installation.

cles, Hall effect ICs provide the ultimate in reliability.

Electronic control pushbutton or rocker switches, with gold or silver contacts, handle up to 1 amp; power duty switches, up to 6 amps.



MML medical application. Intranavenous fluid flow controller automatically dispenses fluids for medications, therapy, and nutrition.



MML communications application. Mobile radio control keeps businesses in touch with employees on the road.

voltage Externally Applied to Output	-0.5 volt min. +28 Volts max. (Off condition)
Loads to Output	20 mA (Sinking)
Storage Temperature	-40° to +85°C (-40° to +185°F)
Operating Temperature	-18° to +65°C (0° to +149°F) and supply voltage of 4.5 to 5.5 VDC

As with all solid state components, performance can be expected to deteriorate as rating limits are approached; however, they will not be damaged unless the limits are exceeded.

YS Yellow*
GS Green*

* Permanently installed.

DY Yellow
DG Green

For incandescent or non-lighted display:

LR Red
LY Yellow
LG Green
LW White
LK Black

Use Legend Order Sheet FO-74024 to cover each catalog listing (see page 69).

CUSTOMER INSTALLATION:

LED

1. Order LED and receptacle, page 73.
2. Installation instructions, page 74/76.

Incandescent Lamp

1. Order lamp/PWB receptacle or lamp/solder receptacle, page 75.
2. Installation instructions, page 76.

Gold Contacts:	alt. action	Gold contacts	
BA	1 pole, mom. action	BA	1-pole, mom. action
BB	1 pole, alt. action	BB	1-pole, alt. action
BC	2 pole, mom. action		
BD	2 pole, alt. action		

MML21 ONE PIECE LENS/PLUNGER SWITCHES ORDER GUIDE

Catalog listing codes for switch, less assembled display options

MML21H

K

3

AA

Housing Type
MML21K Rectangular Black Housing
MML21H Square Black Housing

Mounting	
Rectangular	Square
A No bezel (PWB mounting)	A No bezel (PWB Mounting)
K Black bezel, mtg. clip/long sides	R Black bezel & mtg. clip

Terminals
3 Printed Wiring Board
2 Solder

Circuitry/Action (Each pole is double throw)	
Rectangular	Square
Silver Contacts:	Silver contacts:
AA 1 pole, mom. action	AA 1-pole, mom. action
AB 1 pole, alt. action	AB 1-pole, alt. action
AC 2 pole, mom. action	
AD 2 pole, alt. action	
Gold Contacts:	Gold contacts
BA 1 pole, mom. action	BA 1-pole, mom. action
BB 1 pole, alt. action	BB 1-pole, alt. action
BC 2 pole, mom. action	
BD 2 pole, alt. action	

CUSTOMER INSTALLATION:**LED**

1. Order LED and receptacle, page 73.
2. Installation instructions, page 73/75.

Incandescent Lamp

1. Order lamp/PWB receptacle or lamp/solder receptacle, page 74.
2. Installation instructions, page 75.

LK Black

69.)

Order display options assembled to switch by adding codes below

H**Button Color (One Piece Plunger)**

For LED Display		For Incandescent or non-light display	
H	Red	R	Red
L	Yellow	Y	Yellow
N	Green	G	Green
		Z	Black

RS**LED***

XX	No LED ⁴
RS	Red ⁵
YS	Yellow ⁵
GS	Green ⁵

Legend

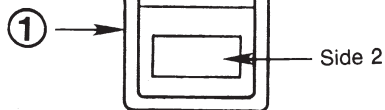
XX20
With Legend (Leave Blank if no legend needed)

Use Legend Order Sheet FO-74024 to cover each catalog listing. (See page 69.)

***Notes:**

1. When an LED is specified in a **rectangular** MML21 listing, MICRO SWITCH will permanently install it in the housing.
2. MICRO SWITCH does **not** permanently install an LED in a **square** MML21 listing. To install an LED in a square housing, order a MML93L or MML93G receptacle and a MML92 LED (see pages 86 and 88).
3. Include four digits (XXXX or XX DR) when a legend is required.
4. For square or rectangular only.
5. For rectangular only.

built ON in each position, black rocker, red lens for LED display in Side 1 and no lens in Side 2.



3-Position	03	Maint.	None	Mom.
	04	Maint.	Maint.	Maint.
	05	Mom.	Maint.	Mom.
	07	Mom.	Maint.	Maint.

Order display options assembled to switch by adding codes below.

01

Action
Insert code numbers from Operating Action Chart

H

Rocker
K Black rocker, non-lighted
H Black rocker, one lens*
F White rocker, one lens*
 * Lighted switches with solder terminals require MML93R receptacle to install lamps or LEDs. See page 76.

DRXX

Lens			
Side 1		Side 2	
XX	None	XX	None
LED display:	Incand. display:	LED display:	Incand. display:
DR Red	LR Red	DR Red	LR Red
DY Yellow	LY Yellow	DY Yellow	LY Yellow
DG Green	LG Green	DG Green	LG Green
	LW White		LW White

Leave blank, if legend not desired

Legend
20 With legend
 Use legend order sheet FO-74193 to cover each catalog listing (see page 70).

CUSTOMER INSTALLATION:

LED

1. Order LED and receptacle, page 73.
2. Installation instructions, pages 74/76.

Incandescent Lamp

1. Order lamp/PWB receptacle or lamp/solder receptacle, page 75.
2. Installation instructions, page 76.

MML31K
Black housing, non-lighted

A No bezel (PWB mounting)
K Black bezel, mtg. clip/long sides

3 Printed wiring board
2 Solder/Quick-connect

AA 1 pole, mom. action
AB 1 pole, alt. action
AC 2 poles, mom. action
AD 2 poles, alt. action

LY	Yellow
LG	Green
LW	White
LK	Black

Use Legend Order Sheet FO-74024 to cover each catalog listing (see page 69).



PWB Mount



Panel Mount



PWB Mount



Panel Mount

• Bezels and mounting clips, LEDs and legended lenses can be furnished installed or ordered separately

MML46 ORDER GUIDE

Catalog listing codes for indicator, less assembled display options

MML46K

A

3

Housing Type	
Rectangular* (1 or 2 LEDs or incand. lamps)	Square* (1 LED or incand. lamp)
MML46K Black housing	MML46H Black housing

Mounting	
Rectangular:	Square:
A No bezel (PWB mounting only)	A No bezel (PWB mounting only)
K Black bezel, mtg. clip/long sides	R Black bezel, mounting clips

Support Posts	
3	PWB ("A" mtg. only)
2	Solder**
0	None*** For snap-in and strip/matrix mount

** Rectangular housings only.
*** No LEDs allowed.

* Notes:

1. When an LED is specified in a **rectangular** MML46 listing, MICRO SWITCH will permanently install it in the housing.
2. MICRO SWITCH does **not** permanently install an LED in a **square** MML46 listing. To install an LED in a square housing, order a MML93L or MML93G receptacle and a MML92 LED (see pages 74 and 76).

CUSTOMER INSTALLATION:

LED

1. Order LED and receptacle, page 73.
2. Installation instructions, pages 74/76.

Incandescent Lamp

1. Order lamp/PWB receptacle or lamp/solder receptacle, page 75.
2. Installation instructions, page 76.

LED TERMINATION

If LEDs are to be permanently installed by MICRO SWITCH, please indicate by either a **2** (solder) or a **3** (PWB) for the Support Posts listing code. With MICRO SWITCH identification to the rear, the longest lead (+) anode will be to the left, closest to the double-pole circuit or support terminals.



Style 2



Style 3

Order display options assembled to indicator by adding codes below

RSXX

LED (Stanley type)

Available in rectangular housings only.

XXXX No LED

One LED*: Two LEDs:

RSXX Red **RSRS** Red

YSXX Yellow **YSYS** Yellow

GSXX Green **GSGS** Green

DR

Lens

For LED display:

DR Red

DY Yellow

DG Green

For incandescent or non-lighted display:*

LR Red

LY Yellow

LG Green

LW White

LK Black

Leave this space blank if legend not desired

20

Legend

20 With legend

Use Legend Order Sheet FO-74024 to cover each catalog listing.

Square housings accept only one LED. Only a two-character LED code is necessary. Example: MML46HR0XXDY.

* When ordering incandescent or non-lighted display, LED field must be XXXX.

Rectangular Lenses:**MML52E**

Switch lens, LED display

MML52G*

Indicator lens

LED display

Square Lenses:**MML52C**

Switch lens, LED display

MML52D**

Indicator lens, LED display

Transmitted Color:**10** No legend**20** With legend**Illumination****LED Display:****R** Red**Y** Yellow**G** Green**C** Clear**Example: MML52G10Y**

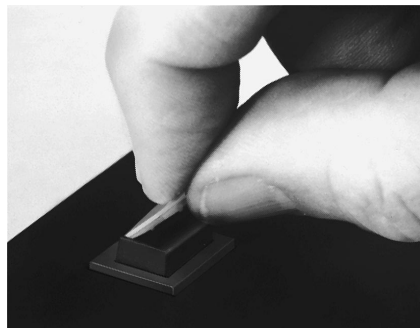
LED display indicator lens; yellow transmitted color, no legend.

* Use MML52E with MML41 rectangular pushbutton style indicators.

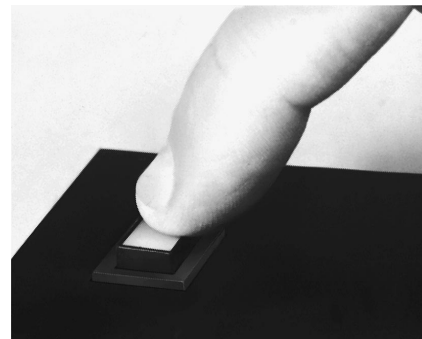
** Use MML52D with MML41 square.

HOW TO INSTALL LENSES

Keytabs on two sides of the lenses mate with matching button slots.

Rectangular lenses have tabs on the long sides. Seat a long side before snapping in place.**HOW TO INSTALL LENSES**

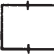

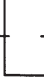

1. Seat lens.



2. Snap in place.

MML Pushbutton/Indicator Lens

Legend Order Guide/Product Specification (PG ____ of ____)

Switch & Indicator Lens Type Orientation	Figure No	Max Lines/Area		Max Characters/Line						
		5/64	7/64	9/64	13/64	5/64	7/64	9/64	13/64	
	C	1	2	1	1	1	3	2	2	1
	D	2	2	1	1	1	4	3	2	2
	E	3	1	1	1	1	6	4	3	2
	G	4	2	1	1	1	7	4	4	3

Note

1. For Proper Legend Orientation, MML housings (when viewed from front of panel) should have "MICRO SWITCH" logo oriented "UP"
2. All legends will be centered within Legend Area.
3. Please use black ink in filling out this form to help us process your order.

LEGEND ORDER CHART

Customer Part No	Fig No	Type Size 7/64 9/64	Ink Color Black White	Button Qty	Legend Description	
					1st Line	2nd Line

FO-74024-B

____ (Signature) _____ (Date)

MML ROCKER LEGEND ORDER GUIDE/PRODUCT SPECIFICATION

Switch Type & Orientation	Figure No	Max Lines/Area			Max Characters/Line				
		5/64	7/64	9/64	13/64	5/64	7/64	9/64	13/64
MML 24, 34 .4 x .6 Size	1	2	1	1	1	3	2	2	1
MML 24, 34 .4 x .6 Size Umbrella and MML 34 .6 x .8 Size	2	1	1	1	1	3	3	2	1
	3	3	2	2	1	4	3	3	2
	4	2	1	1	1	6	4	4	2

Note

- For Proper Legend Orientation, MML housings (when viewed from front of panel) should have "MICRO SWITCH" logo oriented to the left. For other Orientation, indicate the Housing Logo Location in Special Legend Area.
- All legends will be centered within Legend Area.
- Please use black ink in filling out this form to help us process your order.

LEGEND ORDER CHART

Customer Part No	Fig No	Side No	Type Size		Ink Color		Button Qty	Legend Descrip
			5/64	7/64	9/64	13/64		
								1st Line

FO-74193-B

(Signature)

2. Snap bezel onto mounting clip.

MML73EA	(long sides)
MML73EB	(short sides)

Recommended panel thickness for panel mounted units is .050 to .094 in. (1,27 to 2,39 mm).

lens, MML24 rocker lens rectangular button lens	MML92HRS MML92HGS MML92HYS	Red Green Yellow	1.7 V 2.1 V 2.2 V	2.0 V 2.5 V 2.5 V	ESBR3901 ESPY3901 ESAY3901
	MML92HRH MML92HGH MML92HYH	Red Green Yellow	2.2 V* 2.3 V* 2.2 V	Hewlett Packard: 3.0 V 3.0 V 3.0 V	HLMP-1340 HLMP-1540 HLMP-1440

Long lead: Anode (+). Short lead: Cathode (-).

* @ 25 mA.

MML93 LED PWB RECEPTACLE ORDER GUIDE

LED Type	Use to Illuminate	Catalog Listing
T-1 ^{3/4}	Rectangular button lens or umbrella button lens	MML93K
T-1	Square button lens or MML24 rocker lens	MML93G

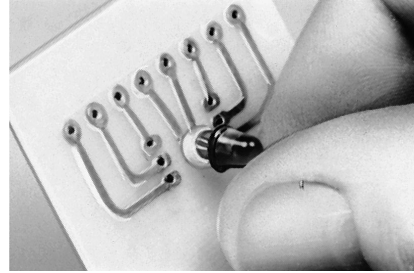
MML93 LED SOLDER TERMINAL ORDER GUIDE

LED Type	Use to Illuminate	Catalog Listing
T-1	Square button (base only)	MML93L
T-1	MML24 rocker lens (base only)	MML93R
T-1	Rectangular button (base and terminal)	MML93J

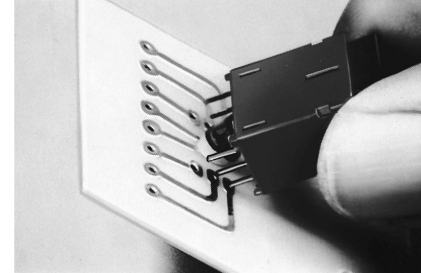
MML46 rectangular indicators only.

1. Insert solder terminal receptacle into hole in base of panel mount unit.

2. A $\frac{1}{8}$ -turn clockwise applied to the receptacle locks it in the base.



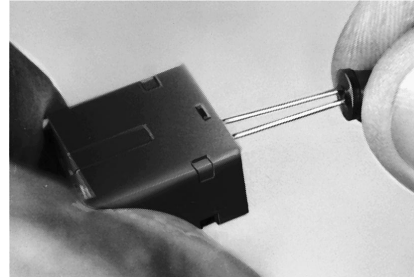
1. Assemble stand-off spacer to LED terminals and seat on printed wiring board.



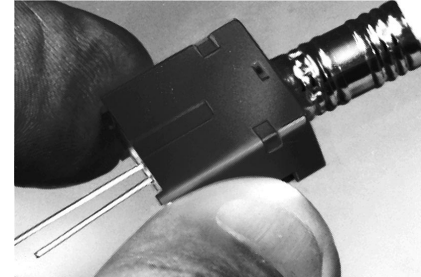
2. Seat housing on printed wiring board, with LED projecting into hole at the base of the housing.

4. By Soldering to Printed Wiring Board or Leadwire (MML44 indicators only).

T-1 $\frac{3}{4}$ LEDs are added to MML44 indicators via a procedure which is unique to this product. The LED is inserted from the top of the housing with the leadwires protruding through the housing base.



1. Assemble LED to MML44 indicator, with the LED terminals protruding through assembly slot in the middle of housing base.



2. Use pencil eraser to snap LED securely in place.

only.

1. Insert solder terminal receptacle into hole in base of panel mount unit.

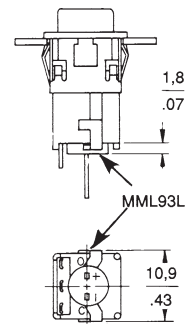
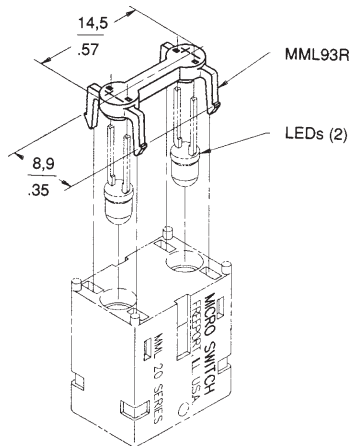
2. A $\frac{1}{8}$ -turn clockwise applied to the receptacle locks it in the base.

3. With Solder Terminal Receptacles for MML93L/93R Unbased Only or T-1 LED.

Use the receptacles shown at right to install T-1 LEDs or T-1 unbased lamps in panel-mounted MML21 square pushbutton switches and MML24 rocker switches.

Procedure:

1. Assemble LEDs or lamps to receptacles (leads first).
2. Snap receptacle into slots in housing base.
3. Solder directly to leads.



Establish tooling holes on X coordinate and use these holes to establish relationship between PWB and Panel

$$\text{Terminals } \frac{0,20}{.008} \times \frac{0,76}{.030}$$

$$\text{Recommended hole size in PWB } \frac{1,17}{.046}$$

N = Number of Switches

$$X = N-1 \times \frac{15,24}{.600} + \frac{15,11}{.595}$$

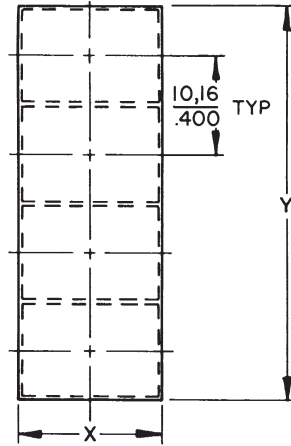
$$Y = \frac{10,16}{.400}$$

Example: N = 3 Switches

$$X = 5-1 \times \frac{15,24}{.600} + \frac{15,11}{.595}$$

$$X = \frac{76,07}{2,995}$$

Vertical Mount



N = Number of Switches

$$Y = N \times \frac{10,16}{.400}$$

$$X = \frac{15,11}{.595}$$

Example: N = 4

$$Y = 4 \times \frac{10,16}{.400}$$

$$Y = \frac{40,64}{1,600}$$

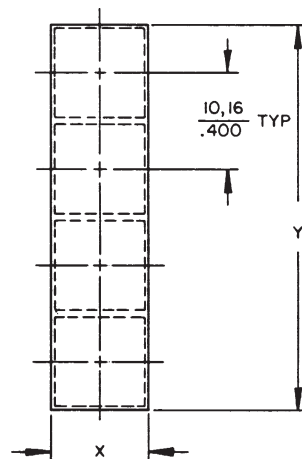
$$\text{Terminals} \frac{.008}{.030} \times \frac{.400}{.030}$$

$$X = N \times \frac{.400}{.400}$$

$$X = \frac{50,80}{2,00}$$

$$\text{Recommended hole size in PWB} \frac{1,17}{.046}$$

Vertical Mounting



N = Number of Switches

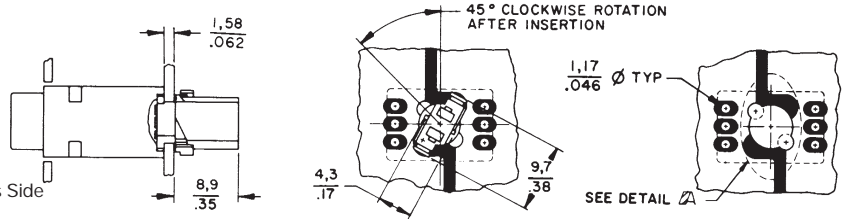
$$\text{Formula: } Y = N \times \frac{10,16}{.400}$$

$$X = \frac{10,16}{.400}$$

$$\text{Example: } N = 4$$
$$Y = 4 \times \frac{10,16}{.400}$$

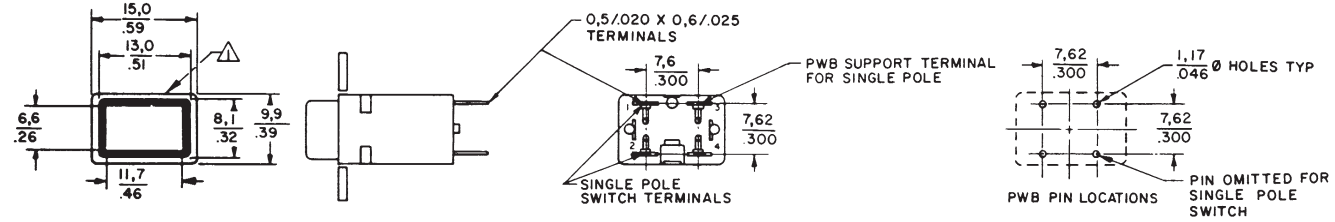
$$Y = \frac{40,64}{1,600}$$

PWB Receptacle Installed (LED or Incandescent Lamp)

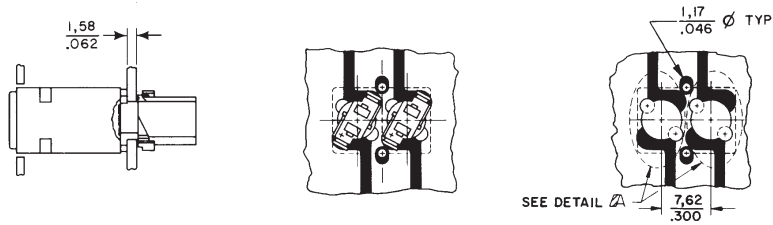


Notes:
 △ MICRO SWITCH Identification This Side
 2 - Linear measure mm/IN. or $\frac{mm}{IN.}$

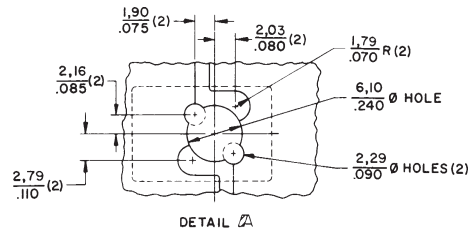
MML31 Switches

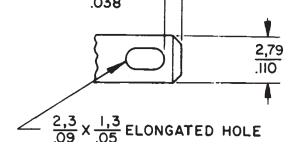
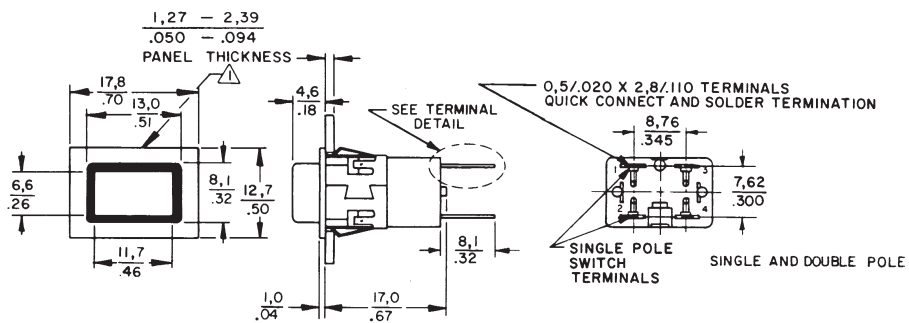


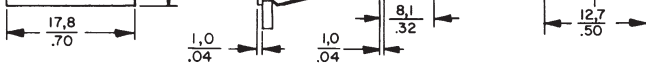
PWB Receptacle Installed (LED or Incandescent Lamp)



PWB Pad Location For Receptacle (LED or Incandescent Lamp)

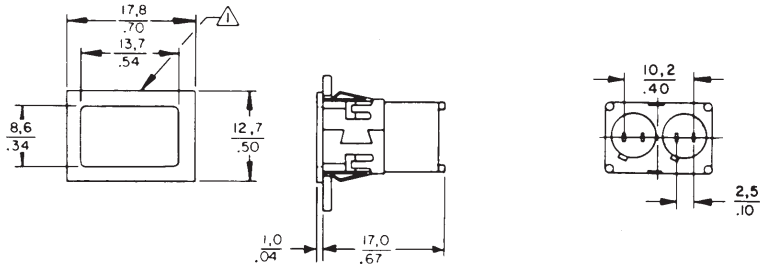




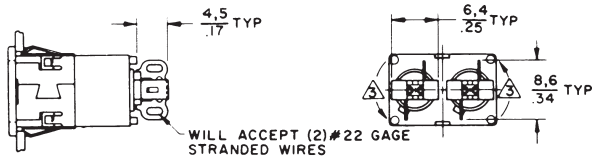


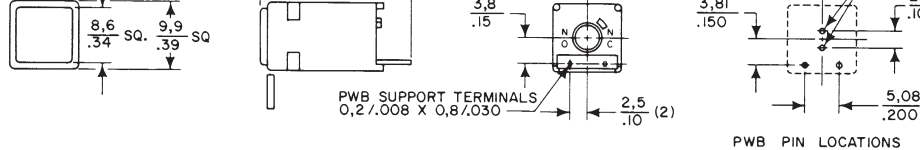
Notes:
 ▲ MICRO SWITCH Identification This Side
 2 - Linear measure mm/IN. or $\frac{\text{mm}}{\text{IN}}$.

MML46 Indicators

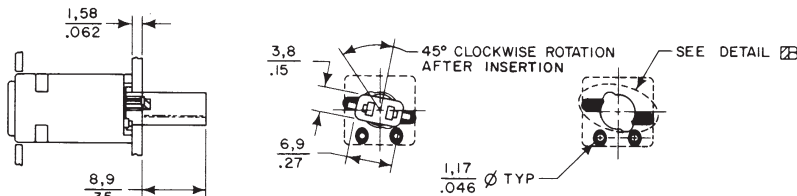


Solder Receptacle Installed (LED or Incandescent Lamp)





PWB Receptacle Installed (LED or Incandescent Lamp)



NOTES

△ MICRO SWITCH IDENTIFICATION THIS SIDE

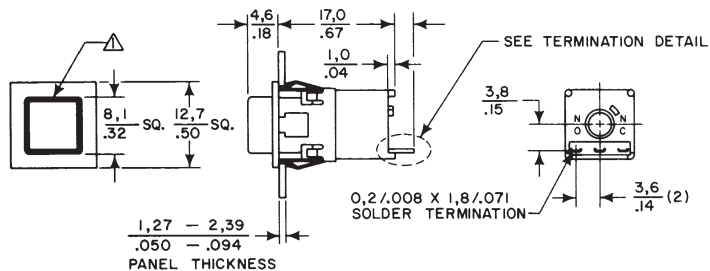
△ MML41: 2.0 / .08

MML46: 1.0 / .04

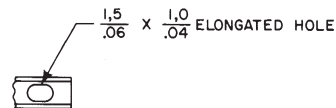
3-LINEAR MEASURE mm/IN OR mm
IN

PANEL MOUNT PUSHBUTTON SWITCHES/SQUARE TYPE

MML21 Switches



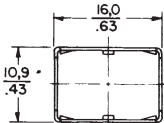
Termination Detail



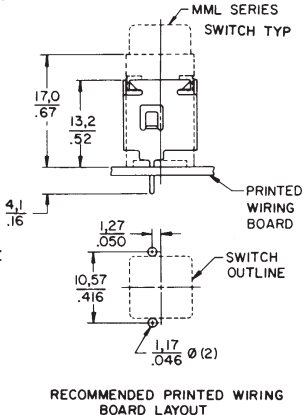
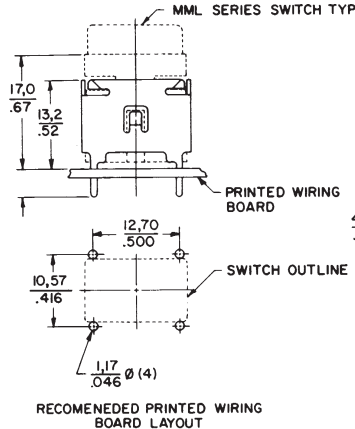
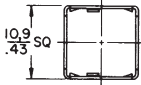
NOTE:
To install LED or lamp, use MML93L receptacle shown on page 76.

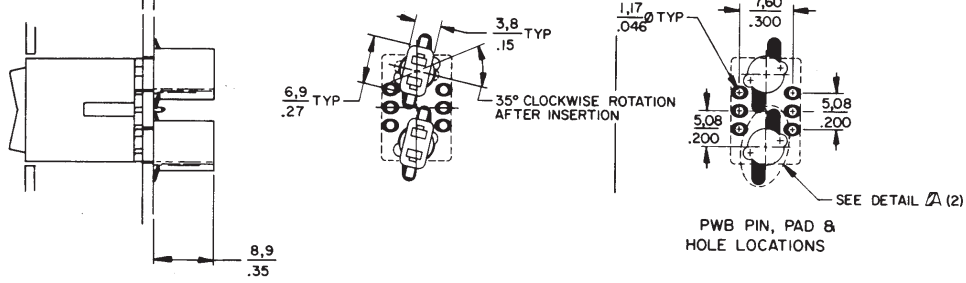
PWB SUPPORT BRACKETS

Rectangular

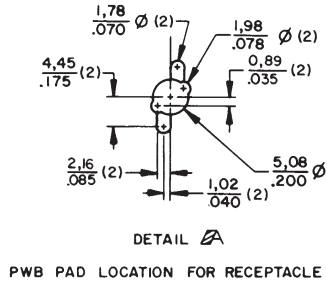


Square





Notes:
 △ MICRO SWITCH Identification
 This Side
 2 – Linear measure mm/IN. or $\frac{\text{mm}}{\text{IN.}}$



X-ON Electronics

Largest Supplier of Electrical and Electronic Components

Click to view similar products for [Pushbutton Switches](#) category:

Click to view products by [Honeywell](#) manufacturer:

Other Similar products are found below :

[LW1L-M1C10V-A](#) [LW2L-A1C20M-GD](#) [LW2L-M1C20M-A](#) [60324L](#) [M7E-HRN2](#) [67021K512](#) [67081K512X](#) [701PB580](#) [719-5504-000](#)
[MDPSSGLFS](#) [810KSV30B](#) [FLT 2U EE 01A](#) [MML21KA3ABK](#) [MML23KA3AC05K-001](#) [MML23KW3AA01W](#) [8418K2](#) [8646AB6X718UL](#)
[8646ABUL](#) [FSDWH](#) [9001KXRK](#) [9001T8BK](#) [9533CD4+U574+U4922](#) [1203MRA](#) [A22EM01S](#) [A595](#) [1202A6](#) [12037A2ULCSA](#) [1203A2UL](#)
[ABD122N-B](#) [1211390004](#) [ABN111-Y](#) [ABN400-R](#) [1211500044](#) [1211580012](#) [1212MRA](#) [1232A6NF](#) [RA3CSH6A](#) [1241.1183.7047](#)
[1241.2511](#) [1241.3428](#) [1223A2ULCSA](#) [1223MRA](#) [1232AX2119](#) [1241.1183.8000](#) [1241.1183.8029](#) [1241.2506](#) [1241.2606](#) [12MA6](#)
[1301940184](#) [RELBARF6X10\(PLASTIC\)](#)