

- 6. THIS DRAWING PREVIOUSLY IDENTIFIED AS NANONICS N10138/230
- 5. NANONICS TERMINATION CODE: L2
- 4. SMT LEADS ARE BECU, TIN LEAD PLATED 60/40 COMPOSITION PER SAE-AMS-P-81728.
- 3. MOUNTING HARDWARE IS AVAILABLE WITH THIS CONFIGURATION (NOT SHOWN). HARDWARE MUST BE SPECIFIED IN THE NANONICS PART NUMBER. CONSULT TE CONNECTIVITY FOR DETAILS.
- 2. STANDARD 1.0 X 0.25mm MOUNTING AND JACKSCREW THREADS ARE SHOWN FOR REFERENCE ONLY AND MUST BE SPECIFIED IN THE NANONICS PART NUMBER WHEN REQUIRED. 1.2 X 0.25mm THREADS ALSO AVAILABLE.
- 1. SHELL OPTIONS (TO BE SPECIFIED IN NANONICS PART NUMBER):  
 METAL: 6061-T6 ALUMINUM, ELECTROLESS NICKEL PLATED PER MIL-C-26074 (STANDARD) OR GOLD PLATED PER MIL-G-45204  
 303 STAINLESS STEEL, PASSIVATED PER SAE-AMS-QQ-P-35  
 INSULATOR MATERIAL FOR ALL METAL SHELLS IS LIQUID CRYSTAL POLYMER (LCP) PER MIL-M-24519 OR PER ASTM D5138  
 PLASTIC: LIQUID CRYSTAL POLYMER (LCP) PER MIL-M-24519 OR PER ASTM D5138

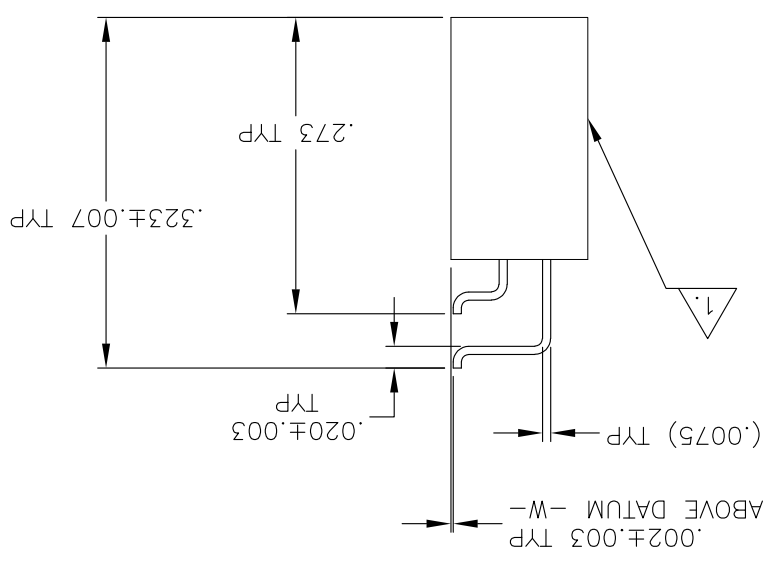
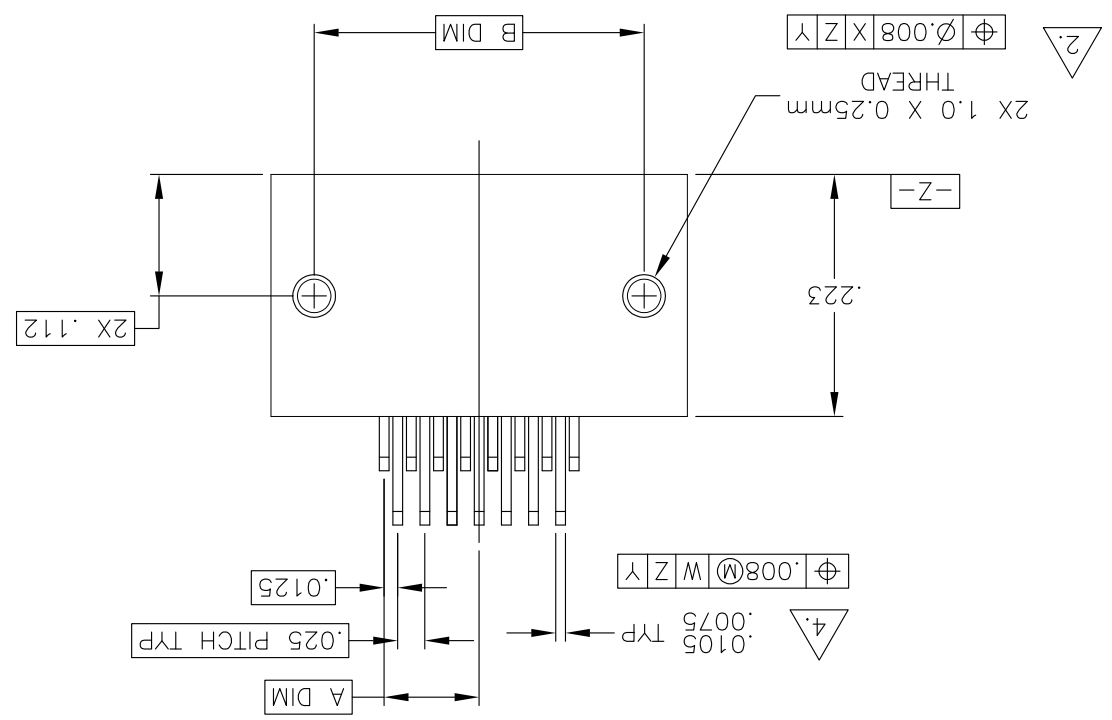
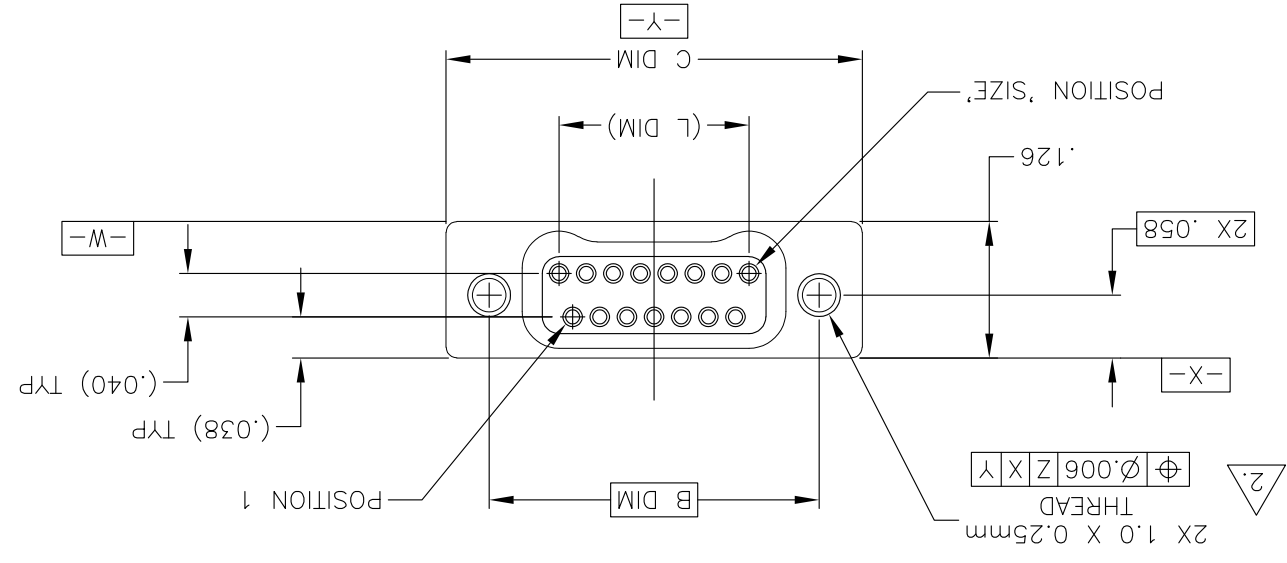
THIS DRAWING IS A CONTROLLED DOCUMENT. DATE: 15 FEB 01. BY: M. STORRY. CHK: S. KAIN. NAME: TE Connectivity

MATERIAL		SEE NOTES	
FINISH		SEE NOTES	
DIMENSIONS:		TOLERANCES UNLESS OTHERWISE SPECIFIED:	
INCHES		FRACTIONS	
0 PLC ±		0 PLC ±	
1 PLC ±		1 PLC ±	
2 PLC ±		2 PLC ±	
3 PLC ±		3 PLC ±	
4 PLC ±		4 PLC ±	
ANGLES		± .1	

APPROVED	DATE	DESCRIPTION	DATE	BY
APVD	15 FEB 01	M. STORRY	15 FEB 01	S. KAIN

NAME	TE Connectivity
PRODUCT SPEC	RECEPTACLE ASSEMBLY, HORIZONTAL SURFACE
APPLICATION SPEC	MOUNT, TWO ROW DUAL-ROW, PLASTIC OR METAL
SIZE	A2
CAGE CODE	00779
DRAWING NO	1589483

CUSTOMER DRAWING SCALE: 8:1 SHEET 1 OF 2 REV U2



SIZE	A DIM	B DIM	C DIM ±.0050	(L DIM)
09	.050	.229	.3085	(.100)
15	.0875	.304	.3835	(.175)
25	.150	.429	.5085	(.300)
37	.225	.579	.6585	(.450)
51	.3125	.754	.8335	(.625)
65	.400	.929	1.0085	(.800)

LOC	DF	DO	P	LTR	DATE	DESCRIPTION	DATE	BY

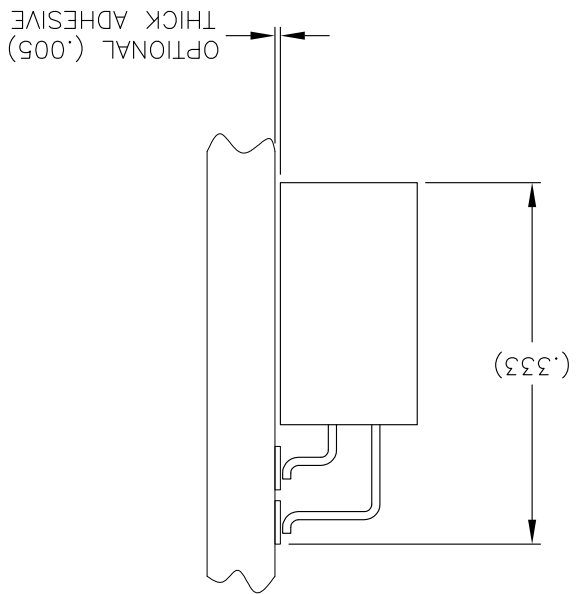
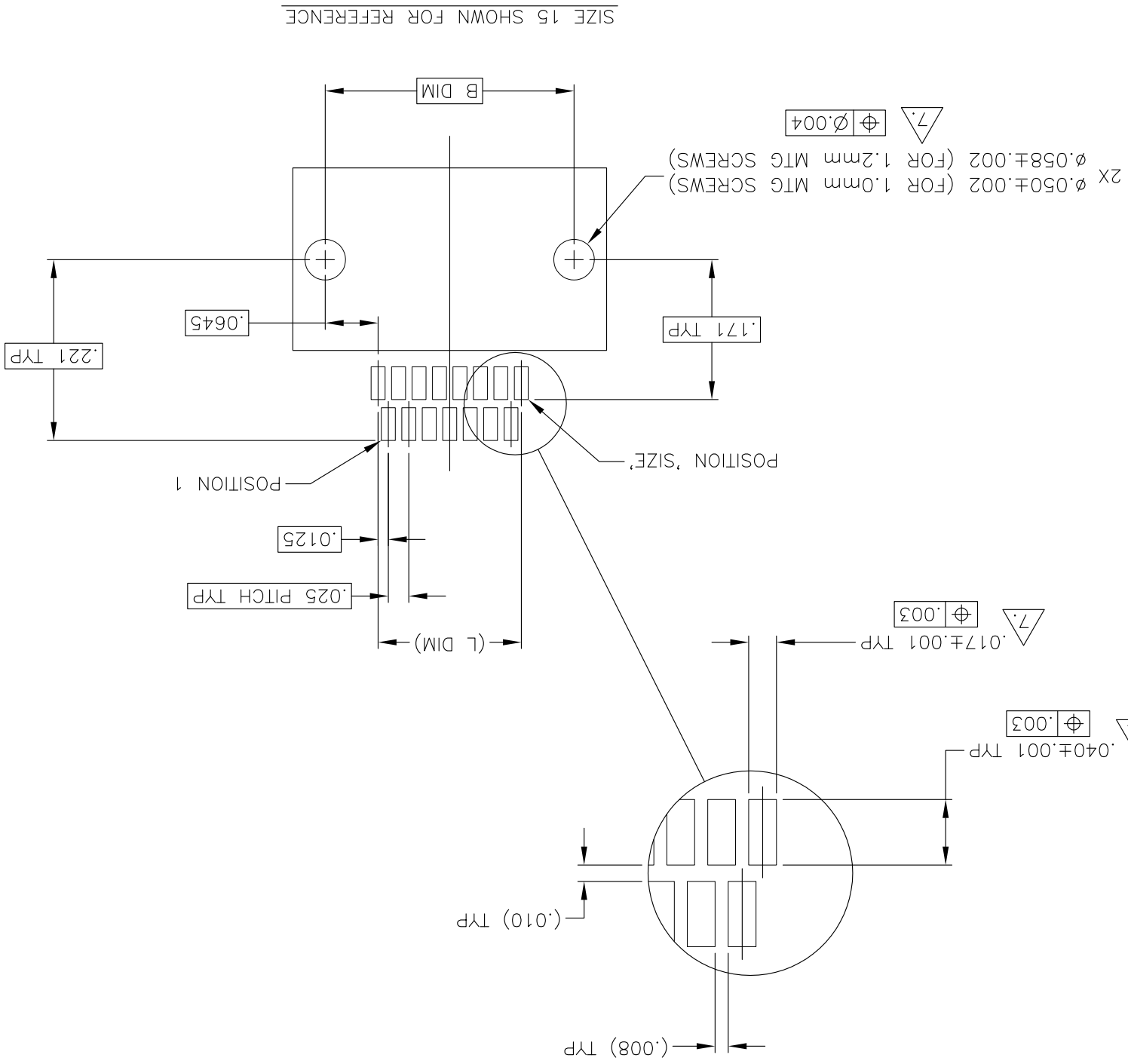
REVISIONS	DATE	DESCRIPTION
U2	09OCT14	REVISED PER ECO-14-013212
MGM		
CT		



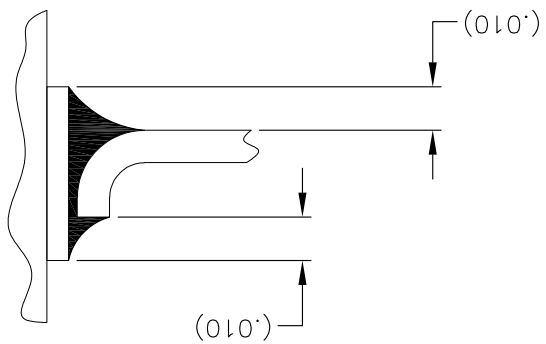
POSITIONAL TOLERANCES FOR BASIC DIMENSIONS FOR FIDUCIALS OR SOME SIMILAR DATUM REFERENCE DEFINED BY THE PCB DESIGNER.

MATERIAL: -		FINISH: -		CUSTOMER DRAWING	
DIMENSIONS: INCHES		TOLERANCES UNLESS OTHERWISE SPECIFIED:		SCALE: 8:1	
0 PLC ±		0 PLC ±		SHEET 2 of 2	
1 PLC ±		1 PLC ±		REV U2	
2 PLC ±		2 PLC ±			
3 PLC ±		3 PLC ±			
4 PLC ±		4 PLC ±			
APPLIC. SPEC.		PRODUCT SPEC.		APPLIC. SPEC.	
WEIGHT: -		APPLIC. SPEC.		APPLIC. SPEC.	
SIZE: A2		CAGE CODE: 00779		DRAWING NO: 1589483	
NAME: -		APVD: -		RECEP. ASSEMBLY, HORIZONTAL SURFACE	
MOUNT, TWO ROW DUAL IN-PLASTIC OR METAL		MOUNT, TWO ROW DUAL IN-PLASTIC OR METAL		MOUNT, TWO ROW DUAL IN-PLASTIC OR METAL	
DMN: M. STORRY		CHK: S. KAIN		DATE: 15 FEB 01	
APVD: -		DATE: 15 FEB 01		TE Connectivity	

TYPICAL PCB LAYOUT



TYPICAL FOOT PLACEMENT ON SOLDER PAD



LOC	DF	DO	P	LTR	DATE	DMN	APVD
REVISIONS							
1							
SEE SHEET 1							

1589483

## X-ON Electronics

Largest Supplier of Electrical and Electronic Components

*Click to view similar products for [Rectangular MIL Spec Connectors](#) category:*

*Click to view products by [TE Connectivity](#) manufacturer:*

Other Similar products are found below :

[006-1169-16](#) [CSR31343-0001-00000](#) [CSR31346-0001-A0001](#) [CSR31899-0001-00000](#) [CSR31900-0001-A0001](#) [CTJ-3D-05](#) [CTS-S16/16](#)  
[M55302/57A36X](#) [M55302/58-A70Y](#) [65002-062](#) [65008-D08](#) [CY4602-000](#) [732-8020-01](#) [732-8021-02 B](#) [77058-22-55PN](#) [81542-20](#)  
[86.030.0053.0](#) [1241346-1](#) [RM252-020-311-2900](#) [DMC-M 08-16 SNE](#) [1589051-4](#) [BACC65CAMA](#) [BACC65CAMN](#) [BACC65CP1PN](#)  
[BACI10BC1220PN](#) [18023-9](#) [HSB-D4S03DM222X](#) [2217548-1](#) [891-009-15SA2-BRT1T](#) [SIM2S100A](#) [1604996-2](#) [SMD25PN90L-4055](#)  
[1925036-4](#) [220A012-25225-0](#) [22628-10-6P-791](#) [CSR31343-0001-A0001](#) [CSR31899-0001-A0001](#) [CSR31900-0001-00000](#) [33526M11-08PD](#)  
[RE04-212S](#) [CTD160E01F-6148](#) [CTJ112E03B](#) [CTJ122E02D-8000](#) [CTJ-3D-12](#) [CTJ920E06N-513](#) [CTJ920E12N-513](#) [CTL-16-090](#) [CTR06-](#)  
[5100SY](#) [M55302/63A20H](#) [M55302/66-30H](#)