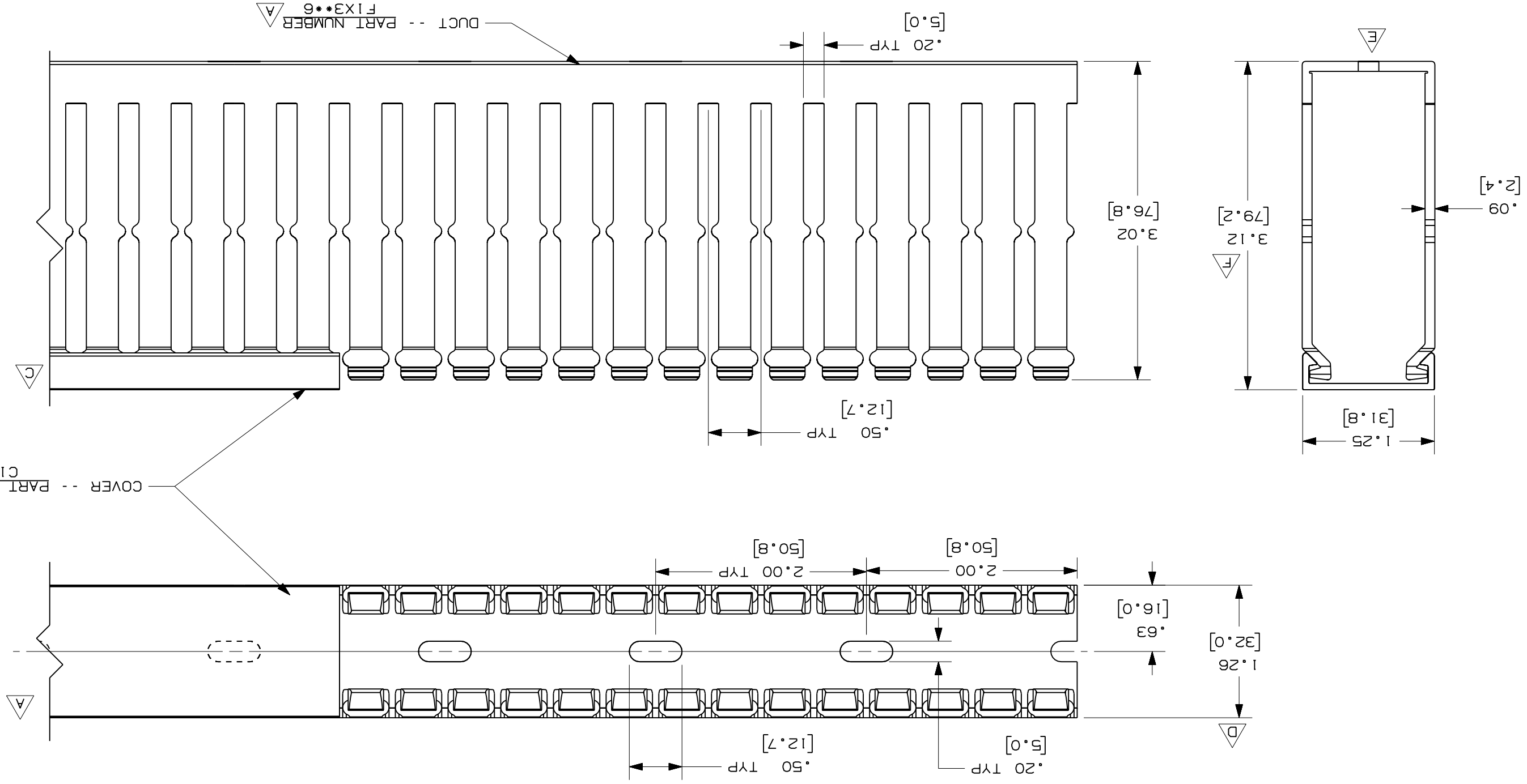


THIS COPY IS PROVIDED ON A RESTRICTED BASIS AND IS NOT TO BE USED IN ANY WAY DETRIMENTAL TO THE INTERESTS OF PANDUIT CORP.



- NOTE.
1. ALL DIMENSIONS ARE REFERENCE ONLY.
 2. DIMENSIONS IN PARENTHESES ARE METRIC.
 3. THE * * * DENOTE COLOR.
 4. DUCT AND COVER ARE AVAILABLE IN 6 FT (1828.8) LENGTH

REV	DATE	BY	CHK	DESCRIPTION
..	-----	---	---	G. ADDED LENGTH NOTE
2	7/23/07	JCST	MKBBE	F. CORRECTED DIMENSION E. REMOVED DIMENSION D. ADDED DIMENSION
1	6/18/04	JCST	MKBBE	A. ADDED TOP VIEW, LABELS, AND NOTE B. CHANGED DRAWING SIZE C. CHANGED VIEW
R	6/18/03	JCST	JGG	DRAWING RELEASED

DATE	6/18/03	CHECKED BY	JGG
DATE	6/18/03	DATE	6/18/03
DATE	6/18/03	DATE	6/18/03

REV	DATE	BY	CHK	DESCRIPTION
..	-----	---	---	G. ADDED LENGTH NOTE
2	7/23/07	JCST	MKBBE	F. CORRECTED DIMENSION E. REMOVED DIMENSION D. ADDED DIMENSION
1	6/18/04	JCST	MKBBE	A. ADDED TOP VIEW, LABELS, AND NOTE B. CHANGED DRAWING SIZE C. CHANGED VIEW
R	6/18/03	JCST	JGG	DRAWING RELEASED

SIZE	B
DWG	B
DRAWING NO.	36897-763
SCALE	FULL
MAT.L.	PVC
DRAWN BY	JCST
DATE	6/18/03
CHECKED BY	JGG

CAD FILENAME/LAYERS	D11000CA-DC/03C
MARKETING DRAWING	1 X 3
WIRING DUCT - TYPE F WITH COVER	
PANDUIT	
CORP. TINLEY PARK, ILLINOIS	

X-ON Electronics

Largest Supplier of Electrical and Electronic Components

Click to view similar products for [Wire Ducting](#) category:

Click to view products by [Panduit](#) manufacturer:

Other Similar products are found below :

[66200A-10](#) [CVED32VEPG](#) [CVED40VEPG](#) [F512D5-5F140Y](#) [F512D5-5F200Y](#) [F512D5-5F26Y](#) [F512D5-5F30Y](#) [F512D5-5F33Y](#) [F512D5-5F34Y](#) [F512D5-5F45Y](#) [F512D5-5F50Y](#) [F512D5-5F54Y](#) [F512D5-5F66Y](#) [F512D5-5F70Y](#) [F512D5-5F75Y](#) [F512D5-5F90Y](#) [F612D5-5F100Y](#) [F612D5-5F130Y](#) [F612D5-5F50Y](#) [F612D5-5F56Y](#) [F612D5-5F58Y](#) [F6L12D5-5F46](#) [F912D5-5F11Y](#) [F912D5-5F170Y](#) [F912D5-5F175Y](#) [F912D5-5F230Y](#) [F912D5-5F300Y](#) [F912D5-5F55Y](#) [F912D5-5F56Y](#) [F912D5-5F63Y](#) [F912D5-5F6Y](#) [F912D5-5F75Y](#) [F912D5-5F85Y](#) [F912D5-5F86Y](#) [F912D5-5F88Y](#) [F912D5-5F96Y](#) [FAP0047WBLMTP](#) [FAP12WBRDRDDLZ](#) [FAP12WDYLYLDLZ](#) [FAP12WEORORDLZ](#) [FAP6WEORORDLZ](#) [FAP6WFDBDBDLZ](#) [FAP8WEORORDLZ](#) [FCE2UWCL](#) [800A-LB](#) [802A-ECSP](#) [802I-ICSP](#) [FJQADH](#) [FJQFXT](#) [PED10](#)