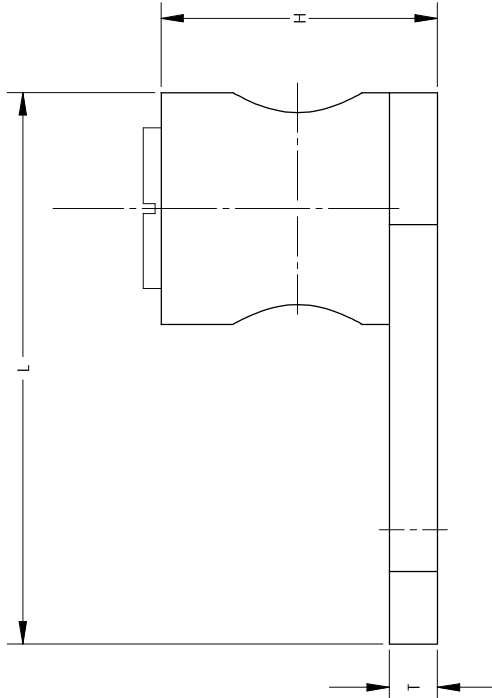
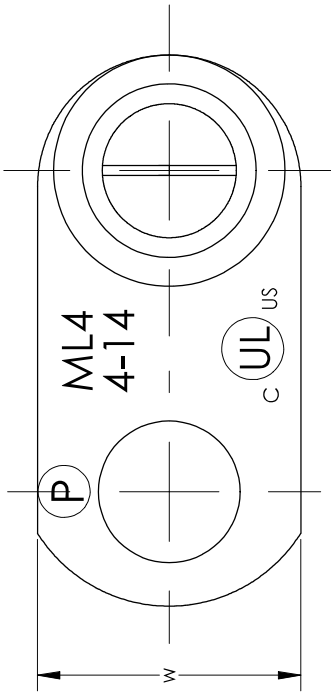


THIS COPY IS PROVIDED ON A RESTRICTED BASIS AND IS NOT TO BE USED IN ANY WAY DETRIMENTAL TO THE INTERESTS OF PANDUIT CORP.



NOTES:

- 1. PARTS ARE (C UL US) LISTED.
- 2. FOR COPPER WIRE ONLY
- 3. PANDUIT PART NUMBERS WITH A "T" ARE TIN PLATED
- 4. PKG QTY: Q = 25
L = 50
C = 100
D = 500
- 5. SEE LABEL FOR SCREW TORQUE VALUES

PANDUIT PART NUMBER	CONDUCTOR RANGE	APPROXIMATE DIMENSIONS				INSTALLATION TOOL	
		BOLT SIZE	W	H	T		L
ML8-CY	14 SOL. - 8 STR.	3/16	0.38	0.42	0.08	0.81	SLOT SCREWDRIVER
ML8T-CY	14 SOL. - 8 STR.	3/16	0.38	0.42	0.08	0.81	
ML4-CY	14 SOL. - 4 STR.	1/4	0.54	0.55	0.09	1.11	1/4" HEX WRENCH
ML4T-CY	14 SOL. - 4 STR.	1/4	0.54	0.55	0.09	1.11	
ML1/0-LY	8 SOL. - 1/0 STR.	5/16	0.73	0.79	0.09	1.57	1/4" HEX WRENCH
ML1/0T-LY	8 SOL. - 1/0 STR.	5/16	0.73	0.79	0.09	1.57	
ML250-QY	6 STR. - 250kcmil	3/8	0.94	1.06	0.12	1.94	1/4" HEX WRENCH
ML250T-QY	6 STR. - 250kcmil	3/8	0.94	1.06	0.12	1.94	

C41569_04

REV	DATE	BY	CHK	DESCRIPTION
04	04/09	JESH	JESH	UPDATED NOTE WIRE RANGE & SOL. - 1/0 STR WAS 14 SOL. - 1/0 STR.
03	03/09	JESH	JESH	UPDATED NOTE 1 PARTS ARE (C UL US) LISTED. WAS UL LISTED & CSA CERTIFIED.
02	03/09	JESH	JESH	ADD NOTE 5. SEE LABEL FOR SCREW TORQUE VALUES
01	8/07	JHNU	JHNU	UPDATED STAMP INFORMATION, AND APPROXIMATE DIMENSIONS
00	7/06	JHNU	LEM	REMOVED ML500-CY FROM DRAWING REMOVED ROHS NOTE: REMOVED MADE IN U.S.A. NOTE CONVERTED DRAWING TO SOLIDWORKS
				DRAWING RELEASED - ROHS COMPLIANT

PANDUIT CORP. TINLEY PARK, ILLINOIS		UNLESS OTHERWISE SPECIFIED, DIMENSIONAL TOLERANCES ARE: (X) ± --- (XX) ± --- (XXX) ± --- ANGLES ± ---	
ML SERIES COPPER MECHANICAL LUGS CUSTOMER DRAWING		SCALE NONE	
DRAWN BY JHNU		MATERIAL: COPPER	
DATE		DRAWING NO / CAD FILE	
ECN	CUST/CHK'D	DWG SIZE	
PC00487		C41569	

X-ON Electronics

Largest Supplier of Electrical and Electronic Components

Click to view similar products for [Terminals](#) category:

Click to view products by [Panduit](#) manufacturer:

Other Similar products are found below :

[HT-13-10](#) [71M-250-32-NB](#) [01-2065-1-0216](#) [00581P0075](#) [M10-10RX](#) [M10BCK](#) [60205-1](#) [604200-1](#) [60598-1-CUT-TAPE](#) [60617-1-C](#) [60873-1](#) [M14-516R/SK](#) [M14-6RSX](#) [M18-10FLX](#) [M18-8FBX](#) [M18-8R/LX](#) [M18BCK](#) [61314-6-C](#) [61-S](#) [61-SN-A](#) [62-NBM-A](#) [63-S](#) [640179-1](#) [640917-2-CUT-TAPE](#) [6501550002](#) [66107-2-C](#) [696683-1](#) [696834-1](#) [696861-1](#) [696931-1](#) [696999-1](#) [M8-516RK](#) [M86700006](#) [MA250DMFMX-A](#) [701-2007](#) [701-2307](#) [701-7761-03](#) [70F-110-32-PB](#) [718-N-A](#) [71M-187-20-NBL](#) [71M-250-32-NBL](#) [72F-187-20-NBL](#) [72M-250-32-NBL](#) [7310](#) [73F-250-32](#) [73F-250-32-NBL](#) [73F-250-32-NL](#) [F14-10C](#) [F-1M](#) [751-250](#)