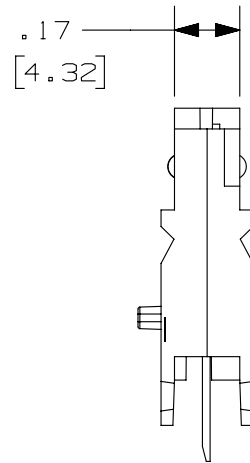
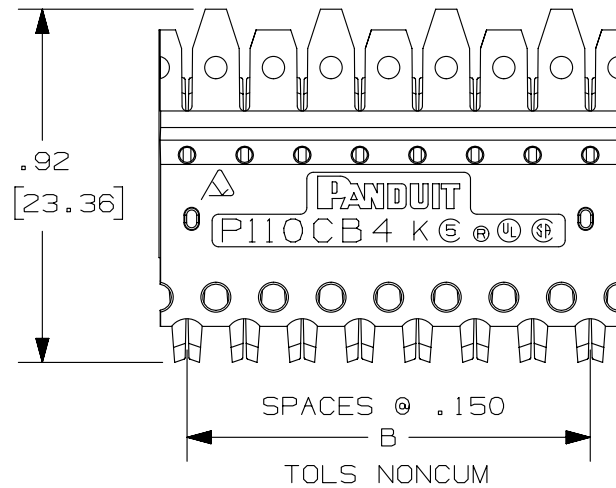
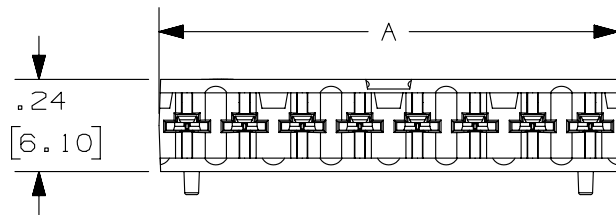


THIS COPY IS PROVIDED ON A RESTRICTED BASIS AND IS NOT TO BE USED IN ANY WAY DETRIMENTAL TO THE INTERESTS OF PANDUIT CORP.



NOTES:

- *1. SEE CURRENT CATALOG FOR ADDITIONAL PART NUMBER SUFFIXES TO INDICATE COLOR AND OR PACKAGE QUANTITY.
2. SEE CATALOG FOR COMPLETE LIST OF PARTS APPLICABLE FOR USE WITH THIS PART.
3. DIMENSIONS IN PARENTHESES ARE IN METRIC.
4. CATEGORY 5E PERFORMANCE CONNECTOR.
5. INSTALLATION TOOL REQUIRED TO INSTALL BLOCK ONTO BASE.



PART NUMBER	PAIRS	DIM. A	DIM. B	WEIGHT
P110CB3-*Y	3	0.896	0.750	.057 LB/10 PCS (26.3g/10 PCS)
P110CB4-*Y	4	1.196	1.050	.083 LB/10 PCS (37.9g/10 PCS)
P110CB5-*Y	5	1.496	1.350	.104 LB/10 PCS (47.3g/10 PCS)



PART NUMBER		P110CB* - *Y		
TITLE				
PAN PUNCH CATEGORY 5E 110 CONNECTING BLOCK				
CUSTOMER DRAWING				
ITEM REVISION NAME		M02479KG/00		
DATASET FILE NAME		M02479KG_DC268/00B		
UNLESS OTHERWISE SPECIFIED, DIMENSIONAL TOLERANCES ARE: IN (mm)		MATERIAL:		
.x ±		.xxx ± .010 (.3)		
.xx ± .03 (.8)		ANGLES ±		
DRAWING NUMBER:		02479-268		
DRAWN BY	DATE	CHK	SCALE	SIZE
NER	3-20-06	WJC	2:1	A
DESCRIPTION		SHT 1 OF 1		

REV	DATE	BY	CHK	APR	DESCRIPTION	ECN
1	5-28-14	MDJR	REFR	MMR	C. REMOVED TABLE. B. REMOVED NOTE 6. A. UPDATED TITLE BLOCK.	02479-268
R	3-20-06	NER	WJC	RMD	RELEASED TO PRODUCTION	02479-268

D10100DA/14

X-ON Electronics

Largest Supplier of Electrical and Electronic Components

Click to view similar products for [Wire Ducting](#) category:

Click to view products by [Panduit](#) manufacturer:

Other Similar products are found below :

[66200A-10](#) [CVED32VEPG](#) [CVED40VEPG](#) [F512D5-5F140Y](#) [F512D5-5F200Y](#) [F512D5-5F26Y](#) [F512D5-5F30Y](#) [F512D5-5F33Y](#) [F512D5-5F34Y](#) [F512D5-5F45Y](#) [F512D5-5F50Y](#) [F512D5-5F54Y](#) [F512D5-5F66Y](#) [F512D5-5F70Y](#) [F512D5-5F75Y](#) [F512D5-5F90Y](#) [F612D5-5F100Y](#) [F612D5-5F130Y](#) [F612D5-5F50Y](#) [F612D5-5F56Y](#) [F612D5-5F58Y](#) [F6L12D5-5F46](#) [F912D5-5F11Y](#) [F912D5-5F170Y](#) [F912D5-5F175Y](#) [F912D5-5F230Y](#) [F912D5-5F300Y](#) [F912D5-5F55Y](#) [F912D5-5F56Y](#) [F912D5-5F63Y](#) [F912D5-5F6Y](#) [F912D5-5F75Y](#) [F912D5-5F85Y](#) [F912D5-5F86Y](#) [F912D5-5F88Y](#) [F912D5-5F96Y](#) [FAP0047WBLMTP](#) [FAP12WBRDRDDLZ](#) [FAP12WDYLYLDLZ](#) [FAP12WEORORDLZ](#) [FAP6WEORORDLZ](#) [FAP6WFDBDBDLZ](#) [FAP8WEORORDLZ](#) [FCE2UWCL](#) [800A-LB](#) [802A-ECSP](#) [802I-ICSP](#) [FJQADH](#) [FJQFXT](#) [PED10](#)