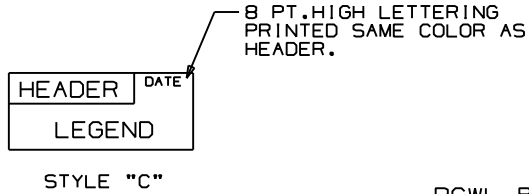
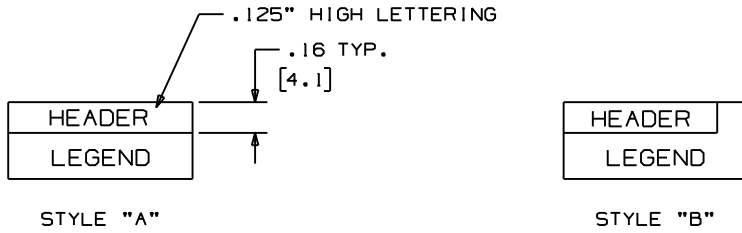
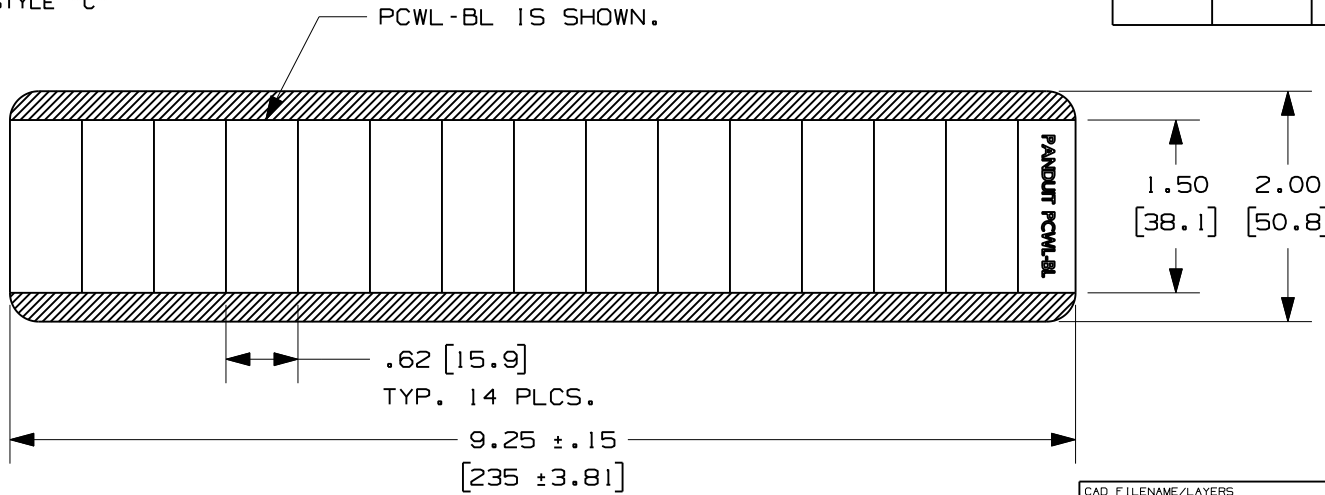


THIS COPY IS PROVIDED ON A RESTRICTED BASIS AND IS NOT TO BE USED IN ANY WAY DETRIMENTAL TO THE INTERESTS OF PANDUIT CORP.



PART NUMBER	HEADER STYLE	HEADER COLOR	HEADER	LEGEND/BACKGND COLOR	LEGEND
PCWL - REJ	C	RED	REJECTED	RED/WHITE	REASON BY
PCWL - ACC	B	GREEN	ACCEPTED	GREEN/WHITE	BY DATE
PCWL - CAL	A	GREEN	CALIBRATION	GREEN/WHITE	BY ___ DATE ___ DUE _____
PCWL - BL	--	--	--	--	--
PCWL - CALD	A	BLACK	CALIBRATED	BLACK/WHITE	BY ___ DATE ___ DUE _____
PCWL - ICAL	A	GREEN	CALIBRATION	GREEN/WHITE	BY ___ DATE ___ DUE _____ GAGE ID _____



- NOTES:
 1. MILLIMETER ARE IN ().
 2. 14 MARKERS PER CARD.
 3. 25 CARDS PER BOX.

CAD FILENAME/LAYERS 100318AC_DC_C10658/06A

PANDUIT CORP. TINLEY PARK, ILLINOIS

CUSTOMER DRAWING PCWL PRETITLED
 WRITE-ON MARKER CARD

UNLESS OTHERWISE SPECIFIED,
 DIMENSIONAL TOLERANCES ARE:
 (.X) ± .1 (.XXX) ± .025
 (.XX) ± .050 ANGLES ±

UNLESS OTHERWISE SPECIFIED,
 ALL DIMENSIONS ARE GIVEN
 IN INCHES, THIRD ANGLE PROJECTION.

DRAWN BY
 RVU

MAT'L:

SCALE
 NTS

DATE
 4/3/08

GMC1
 WHITE
 VINYL CLOTH

DRAWING NO.

C10658

DWG
 A
 SIZE

REV	DATE	BY	CHK	DESCRIPTION	ECN	R	CUST	SUP
0	7/16/08	RVU		DRAWING RELEASE.	5359	R		

X-ON Electronics

Largest Supplier of Electrical and Electronic Components

Click to view similar products for [Wire Identification](#) category:

Click to view products by [Panduit](#) manufacturer:

Other Similar products are found below :

[CU6337-000](#) [CU6342-000](#) [FCA-410-12](#) [11631010](#) [1-1768037-1](#) [1-1768037-2](#) [1-1768050-0](#) [PXLK-VI](#) [Q62184-1](#) [A64304-000](#) [QMT221](#)
[HK032WE1NF038B](#) [1330-0519-10](#) [1395199-1](#) [1395200-1](#) [1395202-1](#) [DMVF050WE-300S6](#) [D-SCE-1K-2.4-50-4-CS7834](#) [1538738-1](#)
[E90935-000](#) [EC1238-000](#) [EC1465-000](#) [EC1855-000](#) [EC1859-000](#) [EC1863-000](#) [EC5415-000](#) [EC7277-000](#) [EC7352-000](#) [EC7603-000](#)
[EC7707-000](#) [EC7735-000](#) [EC7768-000](#) [EC7828-000](#) [EC7854-000](#) [EC7952-000](#) [EC8128-000](#) [1768037-8](#) [1768041-7](#) [NC-127191-10-9](#)
[HS048WE2NF038B](#) [C03232-000](#) [HTCM-SCE-14-4H-9](#) [HTMS-3/16-9](#) [HT-SCE-1/4-2.0-4](#) [HT-SCE-3/16-2.0-4](#) [HTTMS-1/2-1.50-9](#) [HTTMS-](#)
[CM-1/2-4H-9](#) [HX-SCE-19.0-50-9](#) [HX-SCE-6.4-50-4](#) [C25254-000](#)