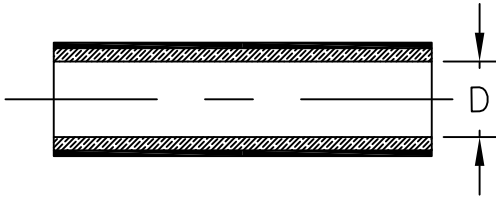


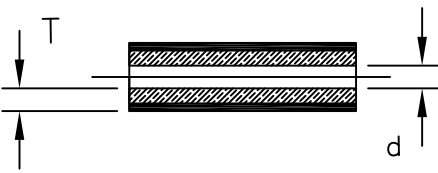
LOC	DIST	REVISIONS					
—	—	P	LTR	DESCRIPTION	DATE	DWN	APVD
		A		INITIAL REVISION	27FEB2015	HD	CD

Component 1 HTAT-24/6

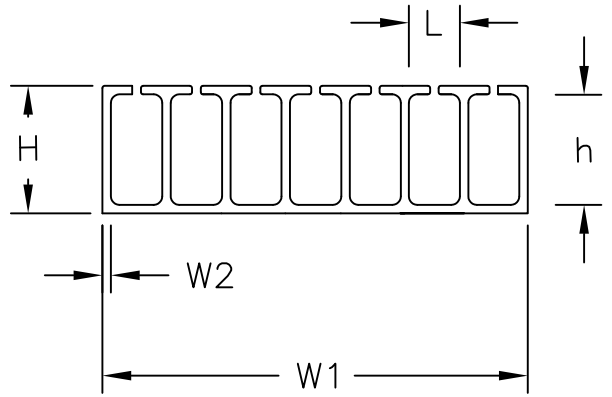
a) Part as supplied



b) Part fully recovered



Component 2 RBK-105-NR5070/A-X



PRODUCT DIMENSIONS & NOTES

DIMENSIONS (in millimetres)

Component 1: HTAT-24/6-0			Component 2: RBK-105-NR5070/A-X				
D	d	T	H	h	L	W1	W2
MIN	MAX	NOM	±20%	±20%	±20%	±20%	±30%
a	b	b					
24.0	6.00	2.25	8.50	6.50	2.75	27.25	1.0
Supplied cut length 65mm ±3.0mm			Supplied cut length 8mm ±0.8mm				
<b>MATERIAL:</b> JACKET: Flame Retarded Modified Polyolefin (Colour: Black) LINER: Hot Melt Adhesive (Colour: Amber)			<b>MATERIAL:</b> Hot Melt Adhesive (Colour: Amber)				
The Kit will be supplied in a standard box containing 1000 pieces of each individual component.							

RELEASED FOR PUBLICATION

ALL RIGHTS RESERVED.

By - TE Connectivity

THIS DRAWING IS UNPUBLISHED.

© COPYRIGHT 2015

DIMENSIONS: mm	DWN	HD	27FEB2015	MATERIAL	—	FINISH	—
	CHK	CD	27FEB2015				
TOLERANCES UNLESS OTHERWISE SPECIFIED:	APVD	CD	27FEB2015				
	0 PLC	± -	PRODUCT SPEC	NAME			
1 PLC	± -	RW-2102	RBK-105-KIT-0107-A0				
2 PLC	± -	APPLICATION SPEC	—				
3 PLC	± -	—	SIZE	CAGE CODE	DRAWING NO	RESTRICTED TO	
4 PLC	± -	—	A4	—	© 143093-000	—	
ANGLES	± -	WEIGHT	4.05 kg	CUSTOMER DRAWING			SCALE
				NTS	SHEET	1 OF 1	REV
							A

## X-ON Electronics

Largest Supplier of Electrical and Electronic Components

*Click to view similar products for [Hand Tools](#) category:*

*Click to view products by [TE Connectivity](#) manufacturer:*

Other Similar products are found below :

[568681-1](#) [576786-2](#) [58061-1](#) [58176-1](#) [58177-1](#) [58177-2](#) [58284-1](#) [59085](#) [0031](#) [59737-5](#) [015-0339-000](#) [015-8755-001](#) [600-146-06](#) [M15570-25](#) [62200-5709](#) [6-304052-1](#) [63443-1002](#) [63443-3513](#) [63443-4025](#) [63443-7114](#) [6-354778-5](#) [6-354779-2](#) [63600-2995](#) [63810-0105](#) [M8196914-08](#) [M819698-07](#) [662508-1](#) [662908-1](#) [679994-1](#) [679994-2](#) [68764-0001](#) [69001-0105](#) [69002-5525](#) [690124-7](#) [690191-1](#) [690191-4](#) [690696-1](#) [691409-4](#) [691667-1](#) [692006-2](#) [692655-7](#) [692776-1](#) [692776-4](#) [693077-3](#) [693077-4](#) [693597-1](#) [D20418-137](#) [D20419-189](#) [ESR-17x17](#) [ET-LY10](#)