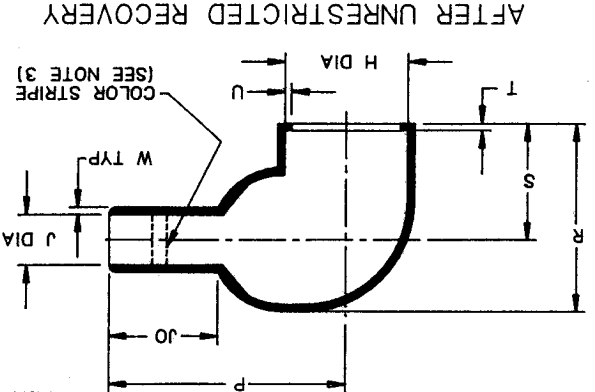
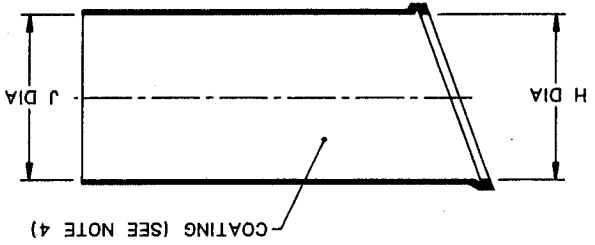


REVISIONS		LTR	DESCRIPTION	DATE	APPROVED



AFTER UNRESTRICTED RECOVERY



AS SUPPLIED

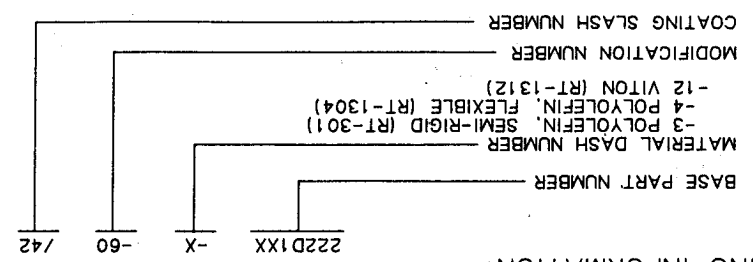
PART NUMBER	-3, -4, -12		-3, -4		-12		J	P	R	S	T	U	JO	W
	MIN	MAX	MIN	MAX	MIN	MAX								
222D121-X-60	.92	.41	.92	.49	.22	.84	.89	.65	.12	.040	.23	.05		
222D132-X-60	1.12	.56	1.12	.58	.26	1.33	1.07	.76	.12	.040	.65	.06		
222D142-X-60	1.22	.70	1.22	.63	.28	1.44	1.22	.83	.12	.040	.50	.07		
222D152-X-60	1.42	.88	1.42	.73	.33	1.72	1.38	.90	.12	.040	.57	.07		
222D163-X-60	1.68	1.11	1.68	.87	.39	2.11	1.73	1.14	.12	.065	.69	.08		
222D174-X-60	2.04	1.36	2.04	1.39	.62	3.07	2.08	1.32	.12	.065	1.32	.13		
222D185-X-60	2.60	1.75	2.60	1.80	.80	3.84	2.60	1.64	.12	.080	1.58	.15		
222D196-X-60	3.22	2.38	3.22	2.25	1.00	4.64	3.30	2.03	.12	.080	1.50	.16		

TABLE OF DIMENSIONS

- NOTES:
1. ALL DIMENSIONS ARE IN INCHES
 2. DIMENSIONS APPEARING IN TABLE ARE AS FOLLOWS:
 a - AS SUPPLIED
 b - AFTER UNRESTRICTED RECOVERY
 3. PARTS SHALL HAVE COLOR STRIPE .12 WIDE X 360° AROUND OUTSIDE SURFACE APPROX. AS SHOWN AND MUST MEET REQUIREMENTS SET FORTH IN MS-3117
 COLORS SHALL BE AS FOLLOWS:
 DASH NO. COLOR
 -3 WHITE
 -4 RED
 -12 YELLOW
 4. COATING IS OPTIONAL FOR -3 AND -4 MATERIALS ONLY, AS SUPPLIED DIMENSIONS APPEARING IN TABLE ARE FOR UNCOATED PARTS. WHEN COATING IS ADDED, ENTRY DIAMETERS WILL BE REDUCED BY .06 MAX. PARTS WILL BE COATED WITH S-1017 ADHESIVE WHEN SPECIFIED AS: 222D1XX-X-60/42

SPECIFICATION CONTROL DRAWING (LIMITED DISTRIBUTION)

THIS DRAWING AND THE INFORMATION SET FORTH HEREON ARE THE PROPERTY OF RAYCHEM CORPORATION AND ARE TO BE HELD IN TRUST AND CONFIDENCE. PUBLICATION, DUPLICATION, DISCLOSURE OR USE FOR ANY PURPOSE NOT EXPRESSLY AUTHORIZED IN WRITING BY RAYCHEM CORPORATION IS PROHIBITED.		DO NOT SCALE THIS DRAWING	
DRAWN	SEAN MCGARRY	CHECKED	S.D.
DESIGN APPROVED	S. S. 11-13-87	APPROVED BY	
MANUFACTURING	11/13/87	QUALITY CONTROL	11/13/87
SPECIFICATION	11/13/87	TECHNICAL SERVICES	11/13/87
PRODUCT MANAGEMENT	11/13/87		
RAYCHEM CORPORATION 300 CONSTITUTION DRIVE MSNLO PARK, CALIFORNIA 9025		TITLE BOOT, 90° WITH LIP	
FSCM CODE NO. 06090		DWG NO. 222D121-X-60	
DATE		SHEET OF	



ORDERING INFORMATION:

X-ON Electronics

Largest Supplier of Electrical and Electronic Components

Click to view similar products for [Cable Boots](#) category:

Click to view products by [TE Connectivity](#) manufacturer:

Other Similar products are found below :

[618235-000](#) [622A014-3-0](#) [CX4132-000](#) [879103-4](#) [879515-000](#) [889092](#) [982033-2](#) [R280576000](#) [1300830729](#) [MTPSRBCL-C](#) [1811481-1](#)
[200W531-3-0](#) [202A121-386-0](#) [202A142-4-00/42-0](#) [202A163-4-0-CS5067](#) [202B221-13-0](#) [202B231-13-0](#) [202B563-25-07-0](#)
[202C621710CS5361](#) [202D132-4-07/42-0](#) [202D221-4-0-CS5349](#) [202D221-4-26-0](#) [202D263-25-08-0](#) [202D263-4-22/42-0](#) [202D263-4-88-0](#)
[202D921-2542-0](#) [202E336-71-0](#) [202F211-50-22-0-CS8474](#) [202F242-50-05-0](#) [202F242-51-04/164-0](#) [202K121-25-CS-1858-0](#) [202K121-25-](#)
[CS-2062-0](#) [202K132-25-01/225-0CS8387](#) [202K153-3-0186-0](#) [202S132-25-UP-0](#) [203W301-3/42-0](#) [207W613-100/184-0-CS5657](#) [207W623-](#)
[100-01/184-0](#) [207W634-100/184-0-CS5657](#) [207W656-100-01/184-0](#) [207W667-100-01/184-0](#) [207W667-100/184-0](#) [208A011-3-0](#) [208A021-3-](#)
[0](#) [221A011-51164-0-CS7133](#) [222A121-2586](#) [222A152-342-0](#) [222A213-25-0-CS5613](#) [222D221-25-13/86-0](#) [222D232-4-61-0-CS5078](#)