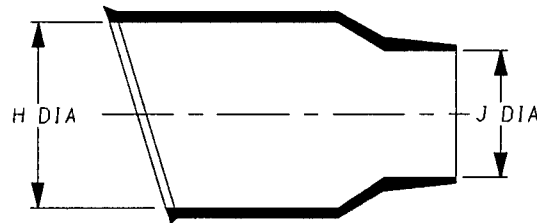
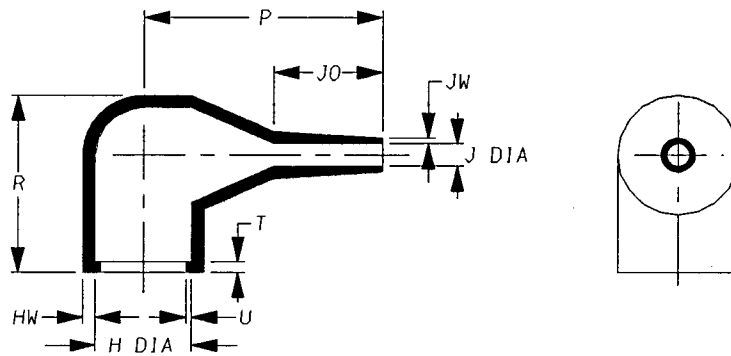


a) Part as supplied

224K012-\*—G02



b) Part after unrestricted recovery.



DIMENSIONS (in millimetres).

| Part Number   | H   |     | J   |     | P    | R    | J0   | T    | U    | JW   | HW   |
|---------------|-----|-----|-----|-----|------|------|------|------|------|------|------|
|               | Min | Max | Min | Max | ±10% | ±10% | ±10% | ±10% | ±10% | ±20% | ±20% |
|               | a   | b   | a   | b   | b    | b    | b    | b    | b    | b    | b    |
| 224K012-*—G02 | 24  | 14  | 16  | 3.3 | 33   | 25   | 15   | 1.5  | 0.8  | 1.8  | 0.8  |
|               | #   |     | #   |     |      |      |      |      |      |      |      |

This is an overexpanded variant  
 Modified dimensions are shown thus:- #

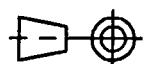
Copyright (!)

The copyright in this drawing is the property of Tyco Electronics UK Ltd. The drawing is issued on the condition that it is not copied, reproduced or disclosed to a third party, either in whole or in part without the prior written consent of Tyco Electronics UK Ltd.

Drawn A.LILLEY. Checked *[Signature]* Issue 3 Date November 2000 Conforms to ISO Recommendations

Approval Design *[Signature]* MKTG. *[Signature]* Q.A. *[Signature]*

3rd Angle Projection  
 Not to Scale



| Iss. | Date          | E.C.R. No. | Details of Change |
|------|---------------|------------|-------------------|
| 2    | July 1989     | 5507       | H & J min was 18  |
| 3    | November 2000 | ****       | Redrawn           |

### Ordering Information

224K012-\*G02/\*\*-0

————— Adhesive Slash Number (if required see compatibility chart)  
 ————— Modification number  
 ————— Material Dash Number (see compatibility chart)  
 ————— Base Part Number

### COMPATIBILITY CHART

| MATERIAL DASH NUMBER | MATERIAL DESCRIPTION            | COATING SLASH NUMBER |
|----------------------|---------------------------------|----------------------|
| -3                   | POLYOLEFIN, SEMI-RIGID          | /42, /86             |
| -4                   | POLYOLEFIN, FLEXIBLE            | /42, /86             |
| -25                  | ELASTOMER, FLUID RESISTANT      | /86, /225            |
| -130                 | POLYOLEFIN, COMMERCIAL FLEXIBLE | /42, /86             |
|                      |                                 |                      |
|                      |                                 |                      |

AS SUPPLIED DIMENSIONS ARE FOR UNCOATED PARTS,  
WHEN COATING IS ADDED, ENTRY DIAMETERS WILL REDUCE BY 1.5mm MAX.

Raychem Wire & Harness  
 a Division of Tyco Electronics  
 Faraday Road,  
 Swindon, Wiltshire, England. SN3 5JA  
 Telephone: (01793) 528171 Fax: 572516

Raychem Wire & Harness  
 a Division of Tyco Electronics  
 300, Constitution Drive, Menlo Park,  
 California 94025-1164, USA  
 Telephone (650) 361-3333 Fax: (650) 361-5579

## X-ON Electronics

Largest Supplier of Electrical and Electronic Components

*Click to view similar products for [Cable Boots](#) category:*

*Click to view products by [TE Connectivity](#) manufacturer:*

Other Similar products are found below :

[618235-000](#) [622A014-3-0](#) [CX4132-000](#) [879103-4](#) [879515-000](#) [889092](#) [982033-2](#) [R280576000](#) [1300830729](#) [MTPSRBCL-C](#) [1811481-1](#)  
[200W531-3-0](#) [202A121-386-0](#) [202A142-4-00/42-0](#) [202A163-4-0-CS5067](#) [202B221-13-0](#) [202B231-13-0](#) [202B563-25-07-0](#)  
[202C621710CS5361](#) [202D132-4-07/42-0](#) [202D221-4-0-CS5349](#) [202D221-4-26-0](#) [202D263-25-08-0](#) [202D263-4-22/42-0](#) [202D263-4-88-0](#)  
[202D921-2542-0](#) [202E336-71-0](#) [202F211-50-22-0-CS8474](#) [202F242-50-05-0](#) [202F242-51-04/164-0](#) [202K121-25-CS-1858-0](#) [202K121-25-](#)  
[CS-2062-0](#) [202K132-25-01/225-0CS8387](#) [202K153-3-0186-0](#) [202S132-25-UP-0](#) [203W301-3/42-0](#) [207W613-100/184-0-CS5657](#) [207W623-](#)  
[100-01/184-0](#) [207W634-100/184-0-CS5657](#) [207W656-100-01/184-0](#) [207W667-100-01/184-0](#) [207W667-100/184-0](#) [208A011-3-0](#) [208A021-3-](#)  
[0](#) [221A011-51164-0-CS7133](#) [222A121-2586](#) [222A152-342-0](#) [222A213-25-0-CS5613](#) [222D221-25-13/86-0](#) [222D232-4-61-0-CS5078](#)