

NOTES:
 1. ALL DIMENSIONS ARE IN INCHES [MILLIMETERS]
 2. DIMENSIONS APPEARING IN TABLE ARE AS FOLLOWS:
 a - AS SUPPLIED
 b - AFTER UNRESTRICTED RECOVERY
 COATING (ADHESIVE) IS OPTIONAL.
 AS SUPPLIED DIMENSIONS APPEARING IN TABLE ARE FOR UNCOATED PARTS.
 WHEN COATING IS ADDED, ENTRY DIAMETER WILL BE REDUCED BY .06 [1.5] MAX.
 COATING DIMENSIONS CH & CJ WILL BE .50 [12.7] MIN AND CK WILL BE .12 [3.0] MIN.
 MOLDING PORTS ARE OPTIONAL.
 WHEN -00 MODIFICATION NUMBER IS SPECIFIED, MOLDING PORTS WILL BE LOCATED AS SHOWN.

3. DIMENSIONS APPEARING IN TABLE ARE AS FOLLOWS:
 a - AS SUPPLIED
 b - AFTER UNRESTRICTED RECOVERY
 COATING (ADHESIVE) IS OPTIONAL.
 AS SUPPLIED DIMENSIONS APPEARING IN TABLE ARE FOR UNCOATED PARTS.
 WHEN COATING IS ADDED, ENTRY DIAMETER WILL BE REDUCED BY .06 [1.5] MAX.
 COATING DIMENSIONS CH & CJ WILL BE .50 [12.7] MIN AND CK WILL BE .12 [3.0] MIN.
 MOLDING PORTS ARE OPTIONAL.
 WHEN -00 MODIFICATION NUMBER IS SPECIFIED, MOLDING PORTS WILL BE LOCATED AS SHOWN.

5. ORDERING INFORMATION
 342A0XX -XX -XX /XXX -00
 BASE PART NUMBER
 MATERIAL DASH NUMBER
 -3 POLYOLEFIN, SEMI RIGID (RT-301)
 -4 POLYOLEFIN, FLEXIBLE (RT-1304)
 -5 ELASTOMER, FLEXIBLE (RT-501)
 -6 SILICONE (RT-602)
 -12 FLUORO ELASTOMER, FLEXIBLE (RT-1312)
 -25 ELASTOMER, FLUID RESISTANT (RW-2070)
 -100 POLYOLEFIN, SEMI-FLEXIBLE ZEROHAL (RW-2082)
 MODIFICATION NUMBER
 ADHESIVE SLASH NUMBER
 SEE COMPATIBILITY CHART BELOW
 COLOR DESIGNATOR

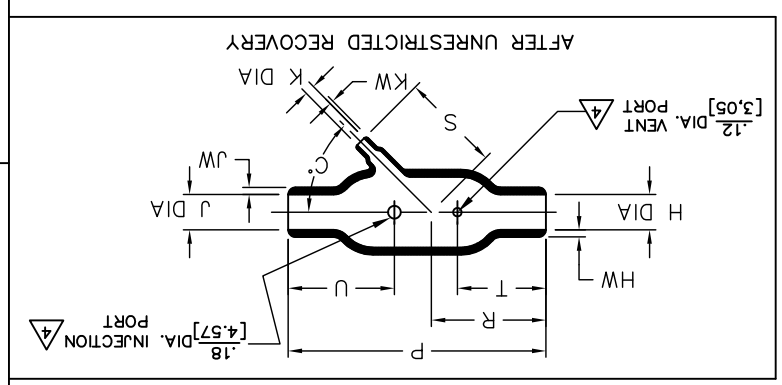
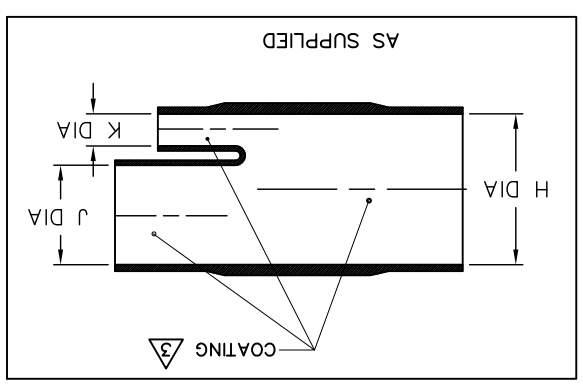
COMPATIBILITY CHART

MATERIAL DASH NO.	ADHESIVE (COATING) SLASH NUMBER	ADHESIVE (COATING) S NUMBER
-100	/86;/180	S-1048; S-1030
-25	/42;/86;/225	S-1017; S-1048; S-1206
-12	N/A	N/A
-6	N/A	N/A
-5	/42;/86;	S-1017;
-4	/42;/86;	S-1017; S-1048;
-3	/42;/86;/180	S-1017; S-1048; S-1030

TE CONNECTIVITY RESERVES THE RIGHT TO MAKE ANY CHANGES TO THIS DRAWING AT ANY TIME WITHOUT NOTICE. THE USER SHALL EVALUATE THE QUALITY OF THE PRODUCT FOR THEIR APPLICATION.
 UNLESS OTHERWISE SPECIFIED DIMENSIONS ARE IN BRACKETS. METRIC DIMENSIONS ARE IN BRACKETS.
 DECIMAL TOLERANCES
 .XXX ± 0.005 [0.13 mm]
 .XX ± 0.01 [0.25 mm]
 .X ± 0.1 [0.50 mm]
 ANGLE TOLERANCE
 X ± 1 DEG.
 TE CONNECTIVITY RESERVES THE RIGHT TO PROTECT THIS DRAWING AT ANY TIME WITHOUT NOTICE. THE USER SHALL EVALUATE THE QUALITY OF THE PRODUCT FOR THEIR APPLICATION.

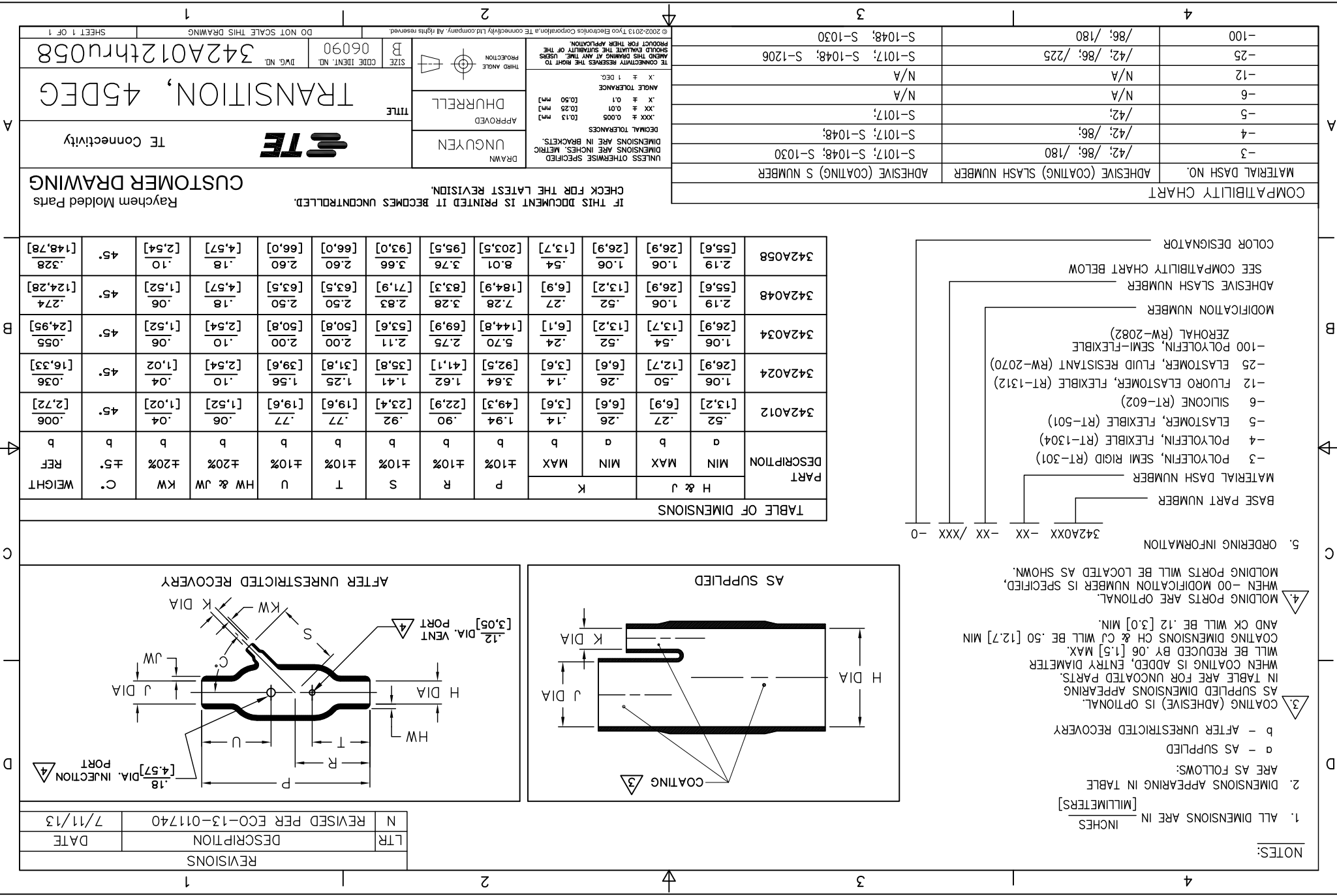
THIRD ANGLE PROJECTION
 DRAWN UNGUYEN
 APPROVED DHURRELL

CUSTOMER DRAWING
 Raychem Molded Parts
 IF THIS DOCUMENT IS PRINTED IT BECOMES UNCONTROLLED.
 CHECK FOR THE LATEST REVISION.
 TITLE TRANSITION, 45DEG
 DRAWN UNGUYEN
 APPROVED DHURRELL
 SIZE B
 CODE IDENT. NO. 06090
 DWG. NO. 342A012thru058
 DO NOT SCALE THIS DRAWING
 SHEET 1 OF 1



REVISIONS

LTR	DESCRIPTION	DATE
N	REVISED PER ECO-13-011740	7/11/13



X-ON Electronics

Largest Supplier of Electrical and Electronic Components

Click to view similar products for [Cable Boots](#) category:

Click to view products by [TE Connectivity](#) manufacturer:

Other Similar products are found below :

[618235-000](#) [622A014-3-0](#) [CX4132-000](#) [879103-4](#) [879515-000](#) [889092](#) [982033-2](#) [R280576000](#) [1300830729](#) [MTPSRBCL-C](#) [1811481-1](#)
[200W531-3-0](#) [202A121-386-0](#) [202A142-4-00/42-0](#) [202A163-4-0-CS5067](#) [202B221-13-0](#) [202B231-13-0](#) [202B563-25-07-0](#)
[202C621710CS5361](#) [202D132-4-07/42-0](#) [202D221-4-0-CS5349](#) [202D221-4-26-0](#) [202D263-25-08-0](#) [202D263-4-22/42-0](#) [202D263-4-88-0](#)
[202D921-2542-0](#) [202E336-71-0](#) [202F211-50-22-0-CS8474](#) [202F242-50-05-0](#) [202F242-51-04/164-0](#) [202K121-25-CS-1858-0](#) [202K121-25-](#)
[CS-2062-0](#) [202K132-25-01/225-0CS8387](#) [202K153-3-0186-0](#) [202S132-25-UP-0](#) [203W301-3/42-0](#) [207W613-100/184-0-CS5657](#) [207W623-](#)
[100-01/184-0](#) [207W634-100/184-0-CS5657](#) [207W656-100-01/184-0](#) [207W667-100-01/184-0](#) [207W667-100/184-0](#) [208A011-3-0](#) [208A021-3-](#)
[0](#) [221A011-51164-0-CS7133](#) [222A121-2586](#) [222A152-342-0](#) [222A213-25-0-CS5613](#) [222D221-25-13/86-0](#) [222D232-4-61-0-CS5078](#)