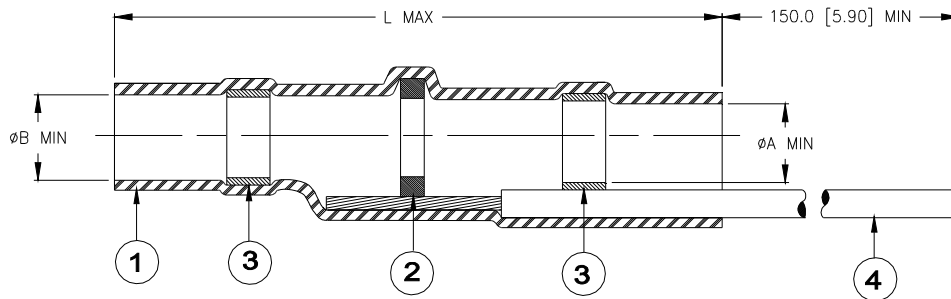


SPECIFICATION CONTROL DRAWING



¹ Product Revision	Product Dimensions				Cable Dimensions					Qty: Item 2
	² Product Name	øA min	øB min	L max	øD max	øE min	øF min	øG max	J	
B-155-03-35-GA-CL	---	2.50 [0.098]	3.00 [0.118]	24.50 [0.965]	3.00 [0.118]	1.50 [0.059]	1.00 [0.040]	2.50 [0.098]	7.00±0.50 [0.276±0.020]	1
B-155-05-35-GA-CL	---	4.30 [0.169]	4.80 [0.189]	29.30 [1.154]	4.80 [0.189]	2.00 [0.079]	1.50 [0.059]	4.30 [0.169]	9.00±0.50 [0.354±0.020]	1
B-155-06-35-GA-CL	---	6.00 [0.236]	6.70 [0.264]	32.00 [1.260]	6.70 [0.264]	3.30 [0.130]	2.80 [0.110]	6.00 [0.236]	10.00±0.50 [0.394±0.020]	1
B-155-07-35-GA-CL	---	6.40 [0.252]	7.30 [0.287]	32.50 [1.280]	7.30 [0.287]	3.30 [0.130]	2.80 [0.110]	6.40 [0.252]	11.00±1.00 [0.433±0.040]	1
B-155-09-35-GA-CL	---	8.70 [0.343]	9.20 [0.362]	35.50 [1.398]	9.20 [0.362]	4.50 [0.177]	4.00 [0.157]	8.70 [0.343]	12.00±1.00 [0.472±0.040]	2
B-155-11-35-GA-CL	---	10.00 [0.394]	11.50 [0.453]	35.50 [1.398]	11.50 [0.453]	4.50 [0.177]	4.00 [0.157]	10.00 [0.394]	13.00±1.00 [0.512±0.040]	2
B-155-13-35-GA-CL	---	13.00 [0.512]	15.00 [0.591]	45.50 [1.791]	15.10 [0.594]	7.00 [0.276]	6.50 [0.256]	13.00 [0.512]	17.00±1.00 [0.669±0.040]	3

¹Consult TE Connectivity for individual product revision. Contains more than 1 part name.

MATERIALS

- INSULATION SLEEVE: Transparent heat-shrinkable radiation cross-linked modified polyolefin.
- SOLDER PREFORMS WITH FLUX: Qty: see table (one solder washer shown).
SOLDER: TYPE Sn42Bi58 per ANSI / J-STD-006.
FLUX: TYPE ROM1 per ANSI / J-STD-004.
- MELTABLE SEALING RINGS: Thermally stabilized thermoplastic.
- GROUND LEAD: Raychem cross-linked polyolefin-insulated wire, stranded tin-plated copper. Consult TE Connectivity for sizes and colors other than listed below.

²Part no. callout shall be replaced with;

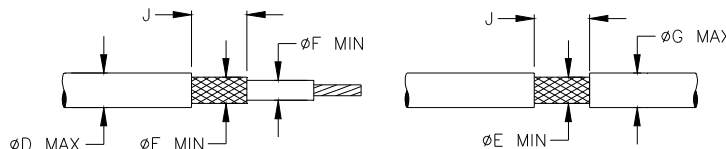
GA = wire size "AWG"; AWG 22 available.

CL = Lead color designation per MIL-STD-681. Available color: green (5); white (9).

APPLICATION

- These controlled soldering devices are designed for termination of a bare or tin-plated copper shield on a cable having an insulation rated for at least +85°C, meeting the dimensional criteria listed in the table above.
- Temperature range: -55°C to +125°C.
- When installed properly, these devices will meet the requirements of TE Connectivity/Raychem Specification RT-1404.
- For installation procedure and application equipment, consult TE Connectivity /Raychem RPIP 824-00.

For best results, prepare the cable as shown:



		TE Connectivity 300 Constitution Drive, Menlo Park, CA. 94025, U.S.A.		Raychem		TITLE: SOLDERSLEEVE TERMINATOR WITH PRE-INSTALLED LEAD		
Unless otherwise specified dimensions are in millimeters. [Inches dimensions are shown in brackets]					DOCUMENT NO.: B-155-XX-35-GA-CL			
TOLERANCES: 0.00 N/A 0.0 N/A 0 N/A	ANGLES: N/A	TE Connectivity reserves the right to amend this drawing at any time. Users should evaluate the suitability of the product for their application.			PROD. REV.: SEE TABLE	DOC. ISSUE: 2	DATE: 16-Apr-11	
PREPARED BY: mforonda	DCR NUMBER: D050222	REPLACES: ---	CAGE CODE: 06090	SCALE: ---	SIZE: A	SHEET: 1 of 1		

Print Date: 9-May-11

© 2011 Tyco Electronics Corporation, a TE Connectivity Ltd. Company. All Rights Reserved.

If this document is printed it becomes uncontrolled. Check for the latest revision.

X-ON Electronics

Largest Supplier of Electrical and Electronic Components

Click to view similar products for [Solder & Shield Tubing category](#):

Click to view products by [TE Connectivity manufacturer](#):

Other Similar products are found below :

[CTC-0062-20-9/5-9](#) [CTC-0062-22-9/5-9](#) [680441-000](#) [D-150-0331CS2902](#) [D-181-1222-90/9CS2800](#) [D-300-01CS1108](#) [982127-1](#) [D-436-0127CS391](#) [D-436-0182CS246](#) [D-436-37CS2651](#) [D-436-58CS246](#) [D-436-61CS246](#) [D-436-82-CS2621](#) [D-750-0005CS2493](#) [E53797N001](#) [S200-2-01](#) [S200-4-00CS2904](#) [LSS-81-16AA-CS5575](#) [SO63-2-9036-22CS2677](#) [SO63-3-01CS293](#) [SO63-3-9036-20CS2677](#) [SO63-3-9036-22CS2677](#) [SO63-4-9036-20CS2677](#) [SO63-5-9036-22CS2677](#) [CC1525-000](#) [CTA-0025](#) [D-108-01CS227](#) [D-108-07CS436](#) [D-128-0010](#) [D-141-0108CS404](#) [D-142-51-202-7754](#) [D-144-41CS1371](#) [D-150-0231-NRCS2896](#) [B-801-18-01](#) [515-9](#) [C67137-000](#) [D-436-36CS2908](#) [D-436-37CS2908](#) [D-436-52CS246](#) [D-436-83CS2705](#) [D-438-0102](#) [LSS-26-8A](#) [427243-000](#) [D-106-2012](#) [D-300-08CS1108](#) [UWCS-2U/7.6-1C/5.8](#) [620026-000](#) [B-004-00](#) [699055-000](#) [140945-000](#)