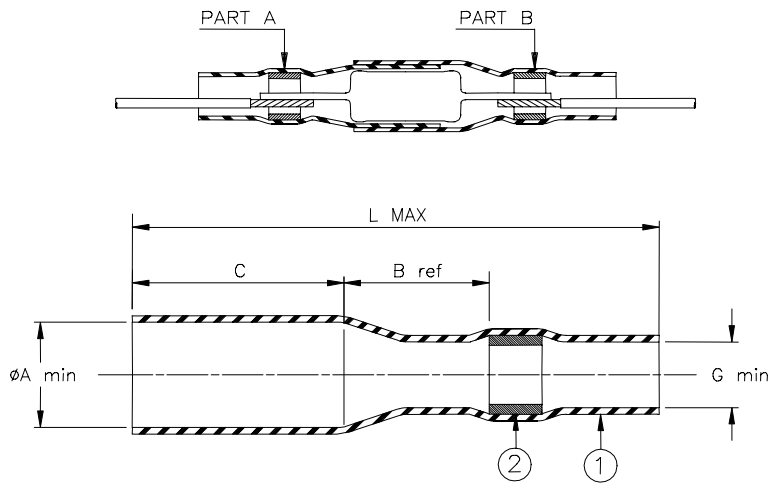


SPECIFICATION CONTROL DRAWING



Product Revision		Product Dimensions				Wire Dimensions			Component Information				
Product Name		A	ØA min	B ref	C max	L max	D min	D max G min	AWG	Lr		Dr	
Kit	Subassemblies									max	min	max	min
CWT-2001	CWT-2001-A	A	2.2 (0.085)	7.7 (0.300)	5.5 (0.215)	22.0 (0.865)	1.1 (0.045)	1.5 (0.060)	22/24	8.0 (0.315)	6.5 (0.255)	2.5 (0.100)	1.8 (0.070)
	CWT-2001-B	A	2.9 (0.114)	7.7 (0.300)	5.5 (0.215)	22.0 (0.865)	1.1 (0.045)	1.5 (0.060)		11.0 (0.435)	9.0 (0.355)	3.5 (0.135)	2.5 (0.100)
CWT-2002	CWT-2002-A	A	3.2 (0.125)	7.7 (0.300)	7.5 (0.295)	27.0 (1.060)	1.1 (0.045)	2.3 (0.090)	20/24	11.0 (0.435)	9.0 (0.355)	3.5 (0.135)	2.5 (0.100)
	CWT-2002-B	A	3.7 (0.145)	7.7 (0.300)	7.5 (0.295)	27.0 (1.060)	1.1 (0.045)	2.3 (0.090)		15.0 (0.590)	10.5 (0.415)	3.9 (0.150)	3.0 (0.120)
CWT-2003	CWT-2003-A	A	3.7 (0.145)	7.7 (0.300)	9.5 (0.375)	27.0 (1.060)	1.8 (0.070)	2.8 (0.110)	18/20	15.0 (0.590)	10.5 (0.415)	3.9 (0.150)	3.0 (0.120)
	CWT-2003-B	A	4.4 (0.175)	7.7 (0.300)	9.5 (0.375)	27.0 (1.060)	1.8 (0.070)	2.8 (0.110)					

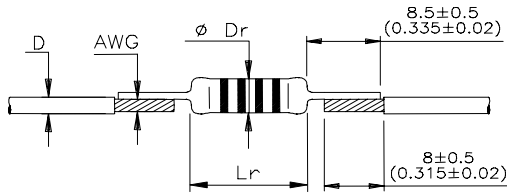
MATERIALS

- INSULATION SLEEVE: Heat-shrinkable, transparent clear, radiation cross-linked polyolefin.
- SOLDER PREFORM WITH FLUX:
 - SOLDER: TYPE Cd18 per ANSI/J-STD-006.
 - FLUX: TYPE ROM1 per ANSI/J-STD-004.

APPLICATION

- These parts are designed to provide an inline termination of a component, rated for +105°C minimum, and meeting the dimensional criteria listed.
- Temperature range: -55°C to +125°C.
- For installation procedure and application equipment, consult Tyco Electronics/Raychem RPIP 824-00.

For best results, prepare the wire and the component as shown:



tyco Electronics		Raychem Products 305 Constitution Drive, Menlo Park, CA. 94025, USA		TITLE: SOLDERSLEEVE DEVICE IN-LINE COMPONENT TERMINATION			
Unless otherwise specified dimensions are in millimeters. [Inches dimensions are shown in brackets]				DOCUMENT NO.: CWT-200X			
TOLERANCES: 0.00 N/A 0.0 N/A 0 N/A		ANGLES: N/A ROUGHNESS IN MICRON		Tyco Electronics reserves the right to amend this drawing at any time. Users should evaluate the suitability of the product for their application.		PROD. REV.: SEE TABLE	
PREPARED BY: mforonda		DCR NUMBER: D030069		REPLACES: D981254		SCALE: None	
				DATE: 8-May-03		SIZE: A	
				SHEET: 1 of 1			

If this document is printed it becomes uncontrolled. Check for the latest revision.

X-ON Electronics

Largest Supplier of Electrical and Electronic Components

Click to view similar products for [Solder & Shield Tubing](#) category:

Click to view products by [TE Connectivity](#) manufacturer:

Other Similar products are found below :

[CTC-0062-20-9/5-9](#) [CTC-0062-22-9/5-9](#) [680441-000](#) [D-150-0331CS2902](#) [D-181-1222-90/9CS2800](#) [D-300-01CS1108](#) [982127-1](#) [D-436-0127CS391](#) [D-436-0182CS246](#) [D-436-37CS2651](#) [D-436-58CS246](#) [D-436-61CS246](#) [D-436-82-CS2621](#) [D-750-0005CS2493](#) [E53797N001](#) [S200-2-01](#) [S200-4-00CS2904](#) [LSS-81-16AA-CS5575](#) [SO63-2-9036-22CS2677](#) [SO63-3-01CS293](#) [SO63-3-9036-20CS2677](#) [SO63-3-9036-22CS2677](#) [SO63-4-9036-20CS2677](#) [SO63-5-9036-22CS2677](#) [CC1525-000](#) [CTA-0025](#) [D-108-01CS227](#) [D-108-07CS436](#) [D-128-0010](#) [D-141-0108CS404](#) [D-142-51-202-7754](#) [D-144-41CS1371](#) [D-150-0231-NRCS2896](#) [B-801-18-01](#) [515-9](#) [C67137-000](#) [D-436-36CS2908](#) [D-436-37CS2908](#) [D-436-52CS246](#) [D-436-83CS2705](#) [D-438-0102](#) [LSS-26-8A](#) [427243-000](#) [D-106-2012](#) [D-300-08CS1108](#) [UWCS-2U/7.6-1C/5.8](#) [620026-000](#) [B-004-00](#) [699055-000](#) [140945-000](#)