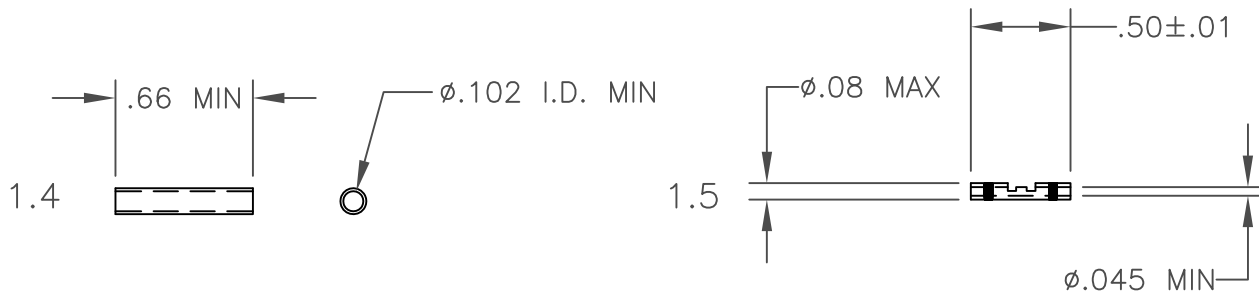
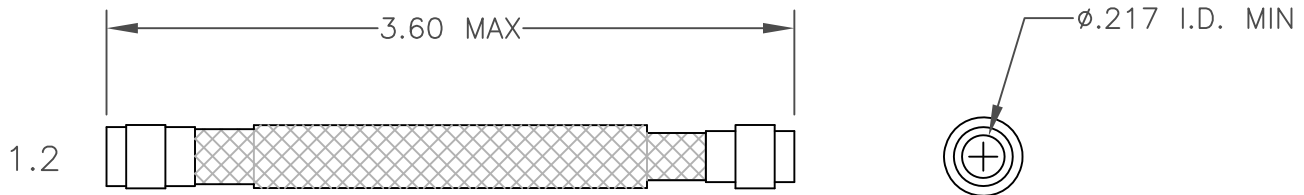
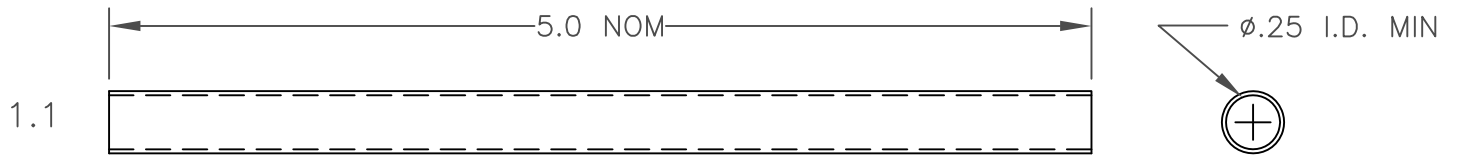


REVISIONS			
LTR	DESCRIPTION	DATE	APPROVED
C	REVISED DWG PER DCR NO. C060215	4/25/06	GMR
D	REVISED DWG PER ECO-11-007423	4/08/11	E.CHEN
D1	ADMINISTRATIVE CHANGE; ITEM 1.5 PER ECO-11-022789	11/11/11	E.CHEN



- 1.1 OUTER HEAT-SHRINKABLE TUBING, WHITE
- 1.2 FLEXIBLE SHIELD JOINT WITH TWO PRE-INSTALLED TERMINATORS.
- 1.3 INNER HEAT-SHRINKABLE TUBING, WHITE.
- 1.4 INSULATION SLEEVES (2), BLUE TRANSLUCENT.
- 1.5 CRIMP FERRULES (2), RED STRIPE CODE.

Raychem Databus
CUSTOMER DRAWING

© 2006-2011 Tyco Electronics Corporation. All Rights Reserved.

UNLESS OTHERWISE SPECIFIED
DIMENSIONS ARE IN INCHES.
METRIC DIMENSIONS ARE
IN BRACKETS.

DECIMALS
 $.XXX \pm .010$ [.25 mm]
 $.XX \pm .02$ [.5 mm]

DRAWN	ZS.O.	5/29/97
APPROVED		
MATERIAL:	_____	
FINISH:	_____	
CAD NAME:	D-150-9708-5a_CD_D1	



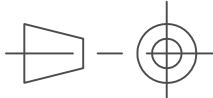
TE Connectivity

TITLE

MIL-STD-1553
CABLE SPLICE KIT
LOW OUTGASSING

WEIGHT
 _____ lbs [_____ g]

THIRD ANGLE
PROJECTION



SIZE	CODE IDENT. NO.	DWG. NO.	REV
A	06090	D-150-9708-5	D1
DO NOT SCALE THIS DRAWING			SHEET 1 OF 2

1.0 MATERIALS

1.1 OUTER HEAT-SHRINKABLE TUBING: HIGH TEMPERATURE LOW OUTGASSING RAYCHEM RT-220 TUBING, WHITE.

1.2 FLEXIBLE SHIELD JOINT: DOUBLE SHIELD, SILVER PLATED COPPER ENDS, PRE-TINNED WITH Sn96 RMA SOLDER. PRE-INSTALLED TERMINATORS: SLEEVES WITH Sn96 RMA SOLDER PREFORMS, PER QQ-S-571.

1.3 INNER HEAT-SHRINKABLE TUBING: HIGH TEMPERATURE LOW OUTGASSING RAYCHEM RT-220 TUBING, WHITE.

1.4 INSULATION SLEEVES: MODIFIED CROSS-LINKED POLYVINYLIDENE FLUORIDE.

1.5 CRIMP FERRULES PER MIL-S-81824/1-1, EXCEPT NICKEL PLATED.

2.0 APPLICATION

2.1 THIS SPLICE KIT IS DESIGNED TO FACILITATE THE ASSEMBLY OR MAINTENANCE OF PRE-CABLE DIGITAL HARNESS COMPONENTS FOR MIL-STD-1553B AND NASA SPECIFICATION SP-R-0022A.

2.2 TO BE USED WHERE CONTINUOUS FLEXING IS NOT A FUNCTIONAL REQUIREMENT.

2.3 CABLES ACCOMMODATED: 7724S1LL4, 7724S3LL4, 7724S8LL4.

2.4 MINIMUM BEND RADIUS, STATIC 80mm. DYNAMIC: NOT RECOMMENDED.

2.5 INSTALLATION PROCEDURE, AND TOOLING: RAYCHEM RPIP-600-12.

2.6 FOR APPLICATIONS OTHER THAN ABOVE, CONSULT TE TECHNICAL SERVICES.

3.0 TEMPERATURE RATING

3.1 OPERATING TEMPERATURE: -65° TO +150°C, BRIEF EXCURSIONS TO +200°C PERMISSIBLE WITHOUT DEGRADATION.

4.0 PERFORMANCE SPECIFICATIONS

ALL EXPOSED MATERIALS MEET THE REQUIREMENTS OF NASA SPECIFICATION SP-R-0022A.

Raychem Databus
CUSTOMER DRAWING



TE Connectivity

DRAWN ZS.O.	DATE 5/29/97	SIZE A	CODE IDENT. NO. 06090	DWG. NO. D-150-9708-5	REV D1
CAD FILE D-150-9708-5b_CD_D1		DO NOT SCALE THIS DRAWING			SHEET 2 OF 2

X-ON Electronics

Largest Supplier of Electrical and Electronic Components

Click to view similar products for [Solder & Shield Tubing category](#):

Click to view products by [TE Connectivity manufacturer](#):

Other Similar products are found below :

[CTC-0062-20-9/5-9](#) [CTC-0062-22-9/5-9](#) [680441-000](#) [D-150-0331CS2902](#) [D-181-1222-90/9CS2800](#) [D-300-01CS1108](#) [982127-1](#) [D-436-0127CS391](#) [D-436-0182CS246](#) [D-436-37CS2651](#) [D-436-58CS246](#) [D-436-61CS246](#) [D-436-82-CS2621](#) [D-750-0005CS2493](#) [E53797N001](#) [S200-2-01](#) [S200-4-00CS2904](#) [LSS-81-16AA-CS5575](#) [SO63-2-9036-22CS2677](#) [SO63-3-01CS293](#) [SO63-3-9036-20CS2677](#) [SO63-3-9036-22CS2677](#) [SO63-4-9036-20CS2677](#) [SO63-5-9036-22CS2677](#) [CC1525-000](#) [CTA-0025](#) [D-108-01CS227](#) [D-108-07CS436](#) [D-128-0010](#) [D-141-0108CS404](#) [D-142-51-202-7754](#) [D-144-41CS1371](#) [D-150-0231-NRCS2896](#) [B-801-18-01](#) [515-9](#) [C67137-000](#) [D-436-36CS2908](#) [D-436-37CS2908](#) [D-436-52CS246](#) [D-436-83CS2705](#) [D-438-0102](#) [LSS-26-8A](#) [427243-000](#) [D-106-2012](#) [D-300-08CS1108](#) [UWCS-2U/7.6-1C/5.8](#) [620026-000](#) [B-004-00](#) [699055-000](#) [140945-000](#)