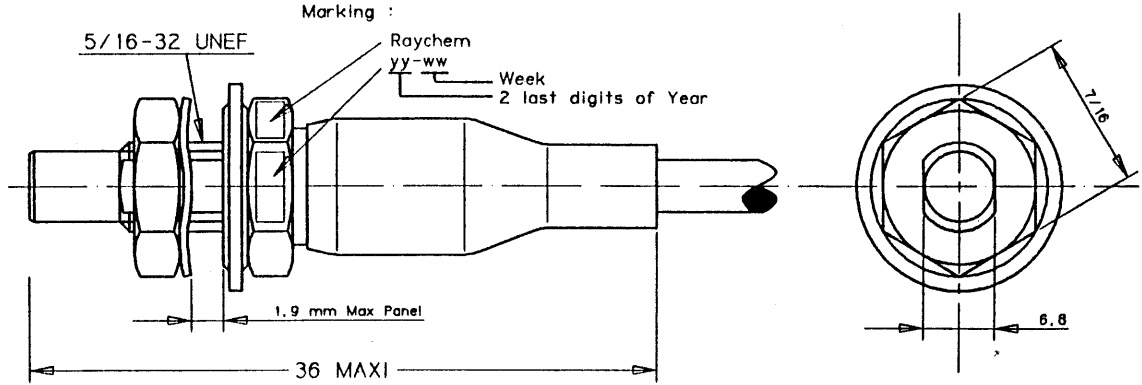


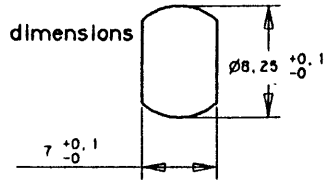
Raychem	SPECIFICATION CONTROL DRAWING	Product name	Date
		DK-3716-Ex02-Ty	06/SEP/91
			Revision \emptyset

THREADED, TRIAXIAL CONNECTOR
TO
AECMA EN 3716-003 SPECIFICATION

T18091

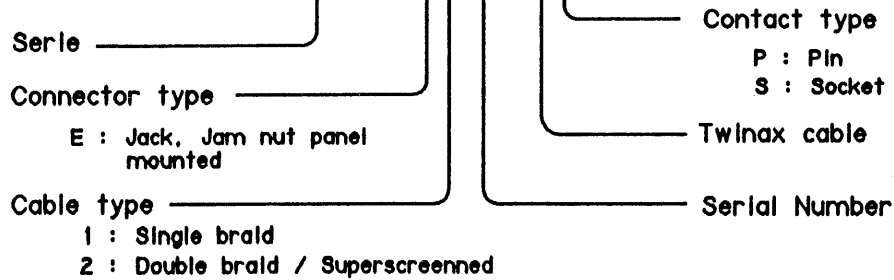


Mounting hole dimensions



PART NUMBERING SYSTEM

DK-3716-Ex02-Ty



RAYCHEM Part Numbering	AECMA Part Numbering
DK-3716-E102-TP	EN 3716-003-M-1
DK-3716-E202-TP	EN 3716-003-M-2
DK-3716-E102-TS	EN 3716-003-F-1
DK-3716-E202-TS	EN 3716-003-F-2

Dimensions are in millimeters

DIFFUSION	DRAWN Ph. ROUCAUTE Engineering <i>ril</i>	APPROVED R. DE CONTI Product Manager <i>R. de Conti</i>	REPLACES
	APPROVED Ph. GUILLON Development <i>Ph. Guillon</i>	APPROVED B. DAUVILLIERS Quality Assurance <i>B. Dauvilliers</i>	PROJECT NUMBER CAD : 1R913702

*A trademark of Raychem Corporation.

This drawing and the information set forth hereon are the property of Raychem Corporation, and are to be held in trust and confidence. Publication, duplication, disclosure or use for any purpose not expressly authorized in writing by Raychem Corporation is prohibited.

Raychem	SPECIFICATION CONTROL DRAWING	Product name DK-3716-Ex02-Ty	Date 06/SEP/91 Revision Ø						
1 MATERIALS AND FINISHES									
1.1 Housing Body:	Brass Alloy per QQ-B-626D Tin Plated per MIL-T-10727 Over Nickel per MIL-C-26074								
* 1.2 Jam Nut:	Brass Alloy per QQ-B-626D Over Nickel per MIL-C-26074								
1.3 Wave Washer:	Spring Steel Over Nickel per MIL-C-26074								
Sealing Washer Elastomer: Washer:	Silicone per AMS-3304 CRES per MIL-S-5059 Half Hard or Annealed Passivated per QQ-P-35								
Insulation:	Polyethersulfone								
* Jam nut shall be torqued 1.13-1.7 m.N when installing connector in panel.									
2 WIRE ACCOMMODATIONS									
2.1 The connector will terminate to a shielded twisted pair AWG 26 to AWG 22.									
2.2 Termination procedure : Raychem RPIP-695-00.									
3 INTERMATEABILITY									
3.1 This connector will mate with DK-3716-Fxxx-yy.									
4 CONTACTS									
4.1 This connector will accommodate the following Raychem contacts :									
<table border="1"> <thead> <tr> <th data-bbox="522 1117 833 1159">Part No.</th> <th data-bbox="833 1117 1141 1159">Description</th> </tr> </thead> <tbody> <tr> <td data-bbox="522 1159 833 1201">D-602-0126</td> <td data-bbox="833 1159 1141 1201">Twinax, Pin</td> </tr> <tr> <td data-bbox="522 1201 833 1243">D-602-0127</td> <td data-bbox="833 1201 1141 1243">Twinax, Socket</td> </tr> </tbody> </table>				Part No.	Description	D-602-0126	Twinax, Pin	D-602-0127	Twinax, Socket
Part No.	Description								
D-602-0126	Twinax, Pin								
D-602-0127	Twinax, Socket								
5 PERFORMANCE CAPABILITIES									
5.1 Design to meet Raychem Performance Specification D-6025 and AECMA EN 3716-003.									
5.2 General Characteristics									
5.2.1 Maximum Operating Temperature : 150°C.									
5.2.2 Current Rating : 3 amps maximum.									
5.2.3 Insulation Resistance : 5000 megohms minimum.									
5.2.4 High Potential, Mated, Sea Level : 900 volts at 60 Hz.									
5.2.5 Contact Resistance, Initial : 8 milliohms maximum.									
5.2.6 Connector Mating Coupling Torque : 1.13 m.N maximum.									
5.2.7 Insertion Force : 1.4 kg maximum.									
5.2.8 Withdrawal Force : 30 g maximum.									
5.2.9 Contact Retention Terminated : 9 kg minimum.									
5.2.10 Durability : 500 cycles.									
5.2.11 Corrosion Resistance : 500 hours.									
5.2.12 Weight : 10 g Max.									

DIFFUSION

* A trademark of Raychem Corporation.

This drawing and the information set forth hereon are the property of Raychem Corporation, and are to be held in trust and confidence. Publication, duplication, disclosure or use for any purpose not expressly authorized in writing by Raychem Corporation is prohibited.

ORIGINAL DOCUMENT

X-ON Electronics

Largest Supplier of Electrical and Electronic Components

Click to view similar products for [Data Bus Components - Connectors](#) category:

Click to view products by [TE Connectivity](#) manufacturer:

Other Similar products are found below :

[891382-000](#) [626023-000](#) [855793-000](#) [D-500-0255-021-01CS252](#) [D-621-0211](#) [D-704-0079](#) [DK-621-0047-2PCS228](#) [DK-621-0412CS325](#)
[DK-621-1637-3P](#) [911225N001](#) [F33352-000](#) [187711-000](#) [201526-000](#) [491952-000](#) [D-600-0174](#) [D-621-0011CS1271](#) [D-621-0472](#) [D-711-03](#)
[DK-621-0050-1P](#) [DK-621-0412-UP](#) [DK-621-0440-4P-CS1498](#) [499725-000](#) [514433-000](#) [E40867-000](#) [614637N002](#) [645241N002](#) [734977-000](#)
[D-500-L455-1-612-360](#) [DK-621-0436-2P-CS1498](#) [041809-000](#) [199653-000](#) [580047-000](#) [608041-000](#) [DK-621-0411-45S](#) [DK-621-0411-US](#)
[DK-621-1633-1S](#) [DK-621-1635-2PCS324](#) [DK-621-1636-2S](#) [DK-621-1638-3S](#) [DK-621-1639-4S](#) [DK-621-1640-4P](#) [149317-000](#) [DK-621-](#)
[0435R-2S](#) [915480-000](#) [DK-621-0435-2UP](#) [D-621-0412-JD](#) [D-621-0477](#) [D-621-0412](#) [DK-621-0411-UP](#) [DK-621-0437-3S](#)