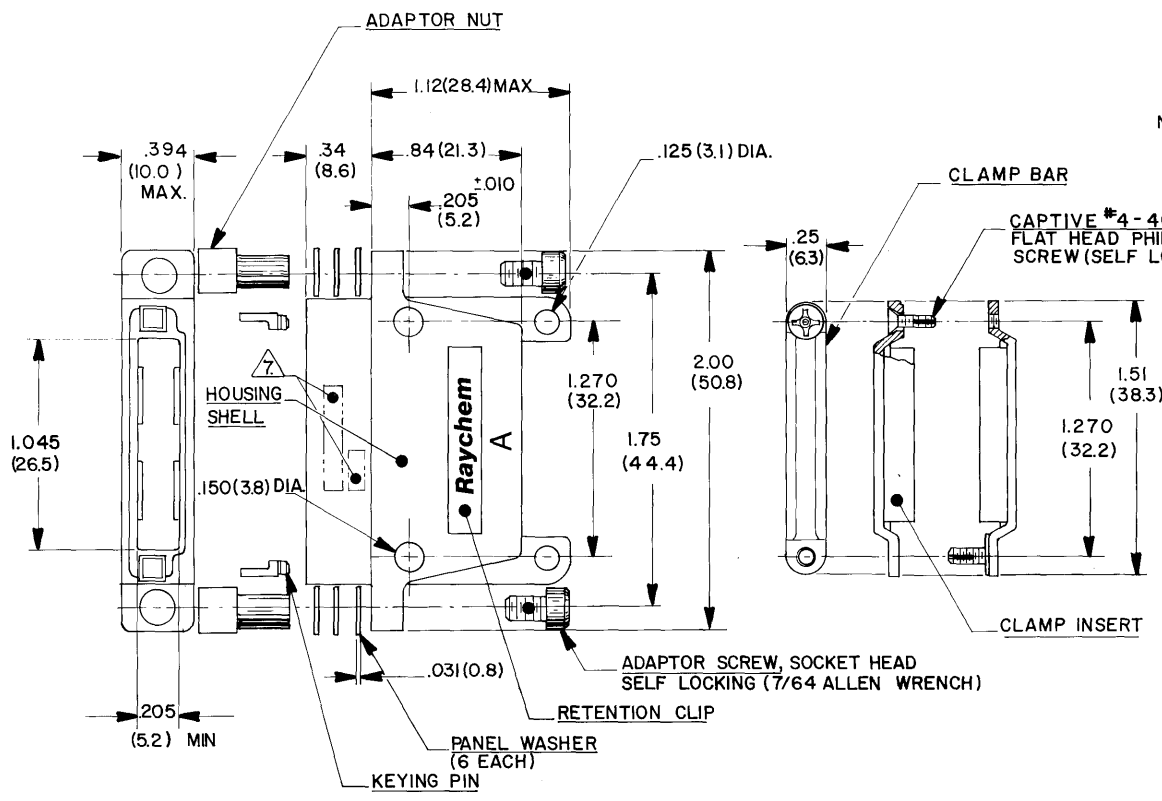


REVISIONS				
NO.	DATE	DESCRIPTION	BY	APPROVED
A	02/79	CHANGE PER DCO 00816		WLB



NOTES:

- MATERIALS:
 - 1-A. HOUSING SHELL; ALUMINUM ALLOY PER QQ-A-591.
 - 1-B. RETENTION CLIP; COPPER ALLOY 172 PER QQ-C-533.
 - 1-C. CAPTIVE SCREW; STAINLESS STEEL PER QQ-S-763,300 SERIES.
 - 1-D. CLAMP INSERT; SILICONE ELASTOMER PER ZZ-R-765.
 - 1-E. ADAPTOR SCREW; STAINLESS STEEL PER QQ-S-763,300 SERIES.
 - 1-F. ADAPTOR NUT; STAINLESS STEEL PER QQ-S-763,300 SERIES.
 - 1-G. PANEL WASHER; STAINLESS STEEL PER QQ-S-763,300 SERIES.
 - 1-H. CLAMP BAR; STAINLESS STEEL PER QQ-S-763,300 SERIES.
 - 1-J. KEYING PIN; POLYARYLENE THERMOPLASTIC, MOLDED.
- FINISH:
 - 2-A. HOUSING SHELL; NICKEL PLATED PER MIL-C-26074, CLASS 3, GRADE B.
 - 2-B. RETENTION CLIP; NICKEL PLATED PER MIL-C-26074, CLASS 2, GRADE B.
 - 2-C. CAPTIVE SCREW; PASSIVATED PER QQ-P-35.
 - 2-D. ADAPTOR SCREW; PASSIVATED PER QQ-P-35.
 - 2-E. ADAPTOR NUT; PASSIVATED PER QQ-P-35.
 - 2-F. PANEL WASHER; PASSIVATED PER QQ-P-35.
 - 2-G. CLAMP BAR; PASSIVATED PER QQ-P-35.

- FOR MOUNTING / MATING AND KEYING INFORMATION, SEE **Raychem** DRAWING D652-0012.
- HOUSING MEETS THE REQUIREMENTS OF **Raychem** SPECIFICATION D-6014.
- THE FOLLOWING MOUNTING AND MATING HARDWARE ARE SUPPLIED NOT INSTALLED WITH EACH RECEPTACLE:
 - (2) KEYING PIN. (2) ADAPTOR NUT. (2) ADAPTOR SCREW. (6) PANEL WASHERS.

© Raychem Corporation 1979

- DUST COVER SUPPLIED INSTALLED WITH EACH RECEPTACLE.
- Raychem** PART NO. MTC100-YHI-004 AND DATE CODE IS STAMPED APPROXIMATELY AS SHOWN.
- WEIGHT LBS | GRAMS
0640 | 26.98

9 CONFIGURATION CONTROL PER ES71001 APPLIES.

CONNECTOR SPECIFICATION CONTROL DRAWING

UNLESS OTHERWISE SPECIFIED DIMENSIONS ARE IN INCHES BRACKETED DIMENSIONS () ARE METRIC AND TOLERANCES ARE: .XXX: ± .005 (0.1M.M.) .XX: ± .02 (0.5M.M.) Δ: ±	DRAWN	SA. LOPEZ	8/2/79	Raychem <small>RAYCHEM CORPORATION 300 CONSTITUTION DRIVE MENLO PARK, CALIFORNIA 94025</small> TITLE RECEPTACLE HOUSING 1 INCH WITH CABLE CLAMP MTC100 SERIES - CONDUCTIVE FINISH
	CHECKED	<i>SP</i>	8/2/79	
	APPROVED	<i>Plan</i>	8/2/79	
	APPROVED	<i>WLB</i>	8/2/79	
	APPROVED	<i>APR</i>	8-2-79	
	PROJECT	6448-H 008		SIZE C CODE IDENT NO. 06090 DWG. NO. MTC100-YHI-004 WEIGHT Δ SHEET 1 OF 1 CONFIGURATION CONTROL

DO NOT SCALE THIS DRAWING

X-ON Electronics

Largest Supplier of Electrical and Electronic Components

Click to view similar products for [Rack & Panel Connectors](#) category:

Click to view products by [TE Connectivity](#) manufacturer:

Other Similar products are found below :

[00170420102](#) [00171420202](#) [00171440002](#) [008026165000265](#) [00-8219-072-000-112P44](#) [008219072000112P5](#) [02-014-013-5200-000](#) [613467-000](#) [CTJ112E01E-513](#) [CTJ116E03A-513](#) [M81714/63-22S L/C](#) [M81714/65-12-1](#) [66020-2](#) [CW8958-000](#) [699886-000](#) [D250-50632](#)
[70.400.3240.0](#) [70.955.2453.3](#) [733753-000](#) [F22831-000](#) [780-522-DPX34RG8-02](#) [MMA25-0341D1](#) [8660-501](#) [87.060.0053.0](#) [900709N001](#)
[QRP4-12P-C\(01\)](#) [QR/P6-6S-C\(01\)](#) [AC-600003-004](#) [1218600-1](#) [D-659-0061](#) [DMC-MD 24 C-T](#) [1-445717-6](#) [1484398-2](#) [1484399-2](#) [1484469-2](#) [MR-34MG](#) [1484225-1](#) [1484398-1](#) [1604997-2](#) [1663130-1](#) [1663767-7](#) [1663767-8](#) [MTC100-BF1-P31CS015](#) [MTC100-KT2-0083](#) [MTC100-KT2-0123-003](#) [MTC100-YA1-005](#) [MTCB1X-105-XXX](#) [MTCPQKT1P2PGDC](#) [MTCPQKT1R2PGCA](#) [MTCR-103-04S](#)