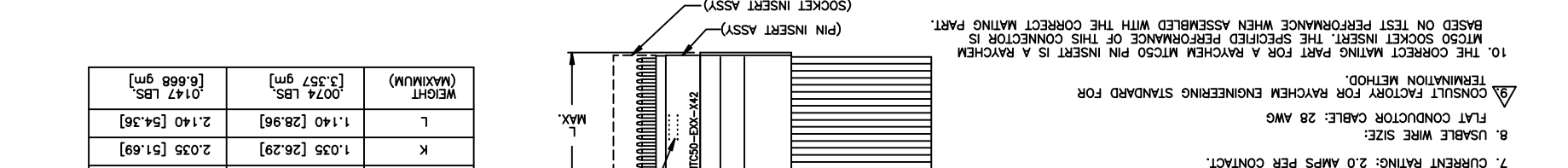
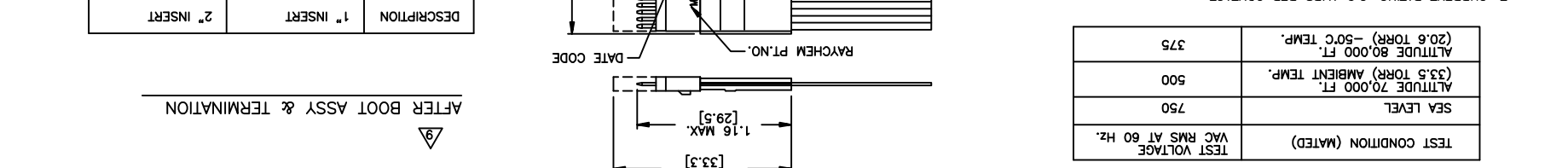
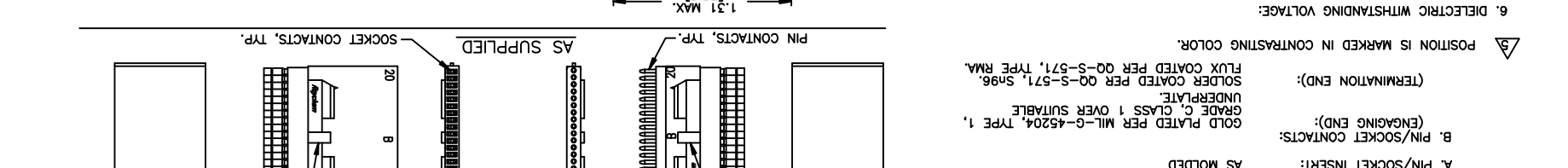
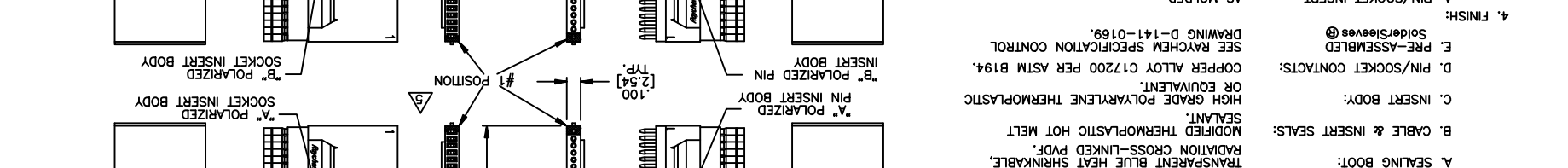
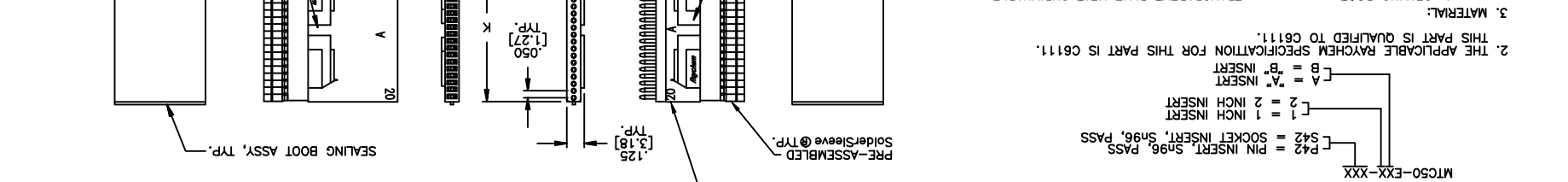


THIS DRAWING AND THE INFORMATION CONTAINED HEREIN ARE THE PROPERTY OF TYCO ELECTRONICS AND ARE TO BE HELD IN TRUST AND CONFIDENCE. PUBLICATION, DUPLICATION, OR USE FOR ANY PURPOSE NOT EXPRESSLY AUTHORIZED IN WRITING BY TYCO ELECTRONICS IS PROHIBITED.

LTR	DESCRIPTION	DATE	APPROVED
B	REVISED PER ECN T-20519	96/1/30	M.HIGGY
B1	ADMINISTRATIVE CHANGE PER ECO-11-024448	Dec/6/2011	M.HIGGY

NOTES:  
 1. PART NUMBER VARIABLE:  
 MTC50-EXX-XXX  
 P42 = PIN INSERT, S96, PASS  
 S42 = SOCKET INSERT, S96, PASS  
 1 = 1 INCH INSERT  
 2 = 2 INCH INSERT  
 A = "A" INSERT  
 B = "B" INSERT  
 2. THIS PART IS QUALIFIED TO CB111.  
 3. MATERIAL:  
 A. SEALING BOOT: TRANSPARENT BLUE HEAT SHRINKABLE, MODIFIED THERMOPLASTIC HOT MELT SEALANT.  
 B. CABLE & INSERT SEALS: HIGH GRADE POLYARYLENE THERMOPLASTIC OR EQUIVALENT.  
 C. INSERT BODY: COPPER ALLOY C17200 PER ASTM B194.  
 D. PIN/SOCKET CONTACTS: PRE-ASSEMBLED SEE RAYCHEM SPECIFICATION CONTROL DRAWING D-141-0169.  
 4. FINISH:  
 A. PIN/SOCKET INSERT: AS MOLDED  
 B. PIN/SOCKET CONTACTS: GOLD PLATED PER MIL-G-45204, TYPE 1, GRADE C, CLASS 1 OVER SUITABLE UNDERPLATE.  
 SOLDER COATED PER QQ-S-571, S96, FLUX COATED PER QQ-S-571, TYPE RMA.  
 POSITION IS MARKED IN CONTRASTING COLOR.



10. THE CORRECT MATING PART FOR A RAYCHEM MTC50 PIN INSERT IS A RAYCHEM MTC50 SOCKET INSERT. THE SPECIFIED PERFORMANCE OF THIS CONNECTOR IS BASED ON TEST PERFORMANCE WHEN ASSEMBLED WITH THE CORRECT MATING PART.

9. CONSULT FACTORY FOR RAYCHEM ENGINEERING STANDARD FOR TERMINATION METHOD.

8. USABLE WIRE SIZE: FLAT CONDUCTOR CABLE: 28 AWG

7. CURRENT RATING: 2.0 AMPS PER CONTACT.

TEST CONDITION (MATED)	TEST VOLTAGE VAC RMS AT 60 HZ.	SEA LEVEL	ALTITUDE 70,000 FT. (33.5 TORR) AMBIENT TEMP.	ALTITUDE 80,000 FT. (20.6 TORR) -50°C TEMP.
		750	500	375

6. DIELECTRIC WITHSTANDING VOLTAGE:

REV	DESCRIPTION	DATE	APPROVED
B1	ADMINISTRATIVE CHANGE PER ECO-11-024448	Dec/6/2011	M.HIGGY
B	REVISED PER ECN T-20519	96/1/30	M.HIGGY

REVISIONS

SIZE	CAGE CODE	DWG. NO.	SCALE
C	06090	MTC50-EXX-P42/S42	NONE

SHEET 1 OF 1

THIRD ANGLE PROJECTION	DATE	DRAWN	CHECKED	APPROVED
	90NOV29	MCHOBSON		
	90DEC11	AKN		
	90DEC11	EZ		

CAD NAME: MTC50-EXX-P42/S42

UNLESS OTHERWISE SPECIFIED DIMENSIONS ARE IN INCHES. METRIC DIMENSIONS ARE IN BRACKETS.

DECIMALS: .XXX ± .005  
 ANGLES: .XX ± .03  
 WEIGHT [g]

RAYCHEM MTC50 CUSTOMER DRAWING

© 2011 Tyco Electronics. All rights reserved.

TE Connectivity

## X-ON Electronics

Largest Supplier of Electrical and Electronic Components

*Click to view similar products for [Rack & Panel Connectors](#) category:*

*Click to view products by [TE Connectivity](#) manufacturer:*

Other Similar products are found below :

[00170420102](#) [00171420202](#) [00171440002](#) [008026165000265](#) [00-8219-072-000-112P44](#) [008219072000112P5](#) [02-014-013-5200-000](#) [613467-000](#) [CTJ112E01E-513](#) [CTJ116E03A-513](#) [M81714/63-22S L/C](#) [M81714/65-12-1](#) [66020-2](#) [CW8958-000](#) [699886-000](#) [D250-50632](#)  
[70.400.3240.0](#) [70.955.2453.3](#) [733753-000](#) [F22831-000](#) [780-522-DPX34RG8-02](#) [MMA25-0341D1](#) [8660-501](#) [87.060.0053.0](#) [900709N001](#)  
[QRP4-12P-C\(01\)](#) [QR/P6-6S-C\(01\)](#) [AC-600003-004](#) [1218600-1](#) [D-659-0061](#) [DMC-MD 24 C-T](#) [1-445717-6](#) [1484398-2](#) [1484399-2](#) [1484469-2](#) [MR-34MG](#) [1484225-1](#) [1484398-1](#) [1604997-2](#) [1663130-1](#) [1663767-7](#) [1663767-8](#) [MTC100-BF1-P31CS015](#) [MTC100-KT2-0083](#) [MTC100-KT2-0123-003](#) [MTC100-YA1-005](#) [MTCB1X-105-XXX](#) [MTCPQKT1P2PGDC](#) [MTCPQKT1R2PGCA](#) [MTCR-103-04S](#)