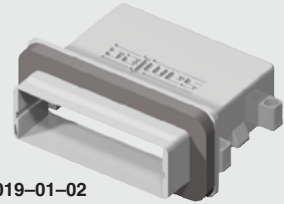
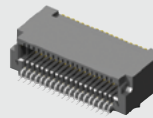


ERI8-019-S-D-RA



ERC-019-01-02

**ERI8, ERC SERIES**

**(0.80 mm) .0315"**

# HIGH-SPEED I/O SYSTEM

ERI8 Mates with:  
EPLSP

**SPECIFICATIONS**

For complete specifications and recommended PCB layouts see [www.samtec.com?ERI8](http://www.samtec.com?ERI8)

**Insulator Material:**  
Black LCP

**Terminal Material:**  
BeCu

**Plating:**  
Au or Sn over

50 μm (1.27 μm) Ni

**Current Rating:**  
1.7 A per pin

(2 pins powered)

**Voltage Rating:**  
225 VAC/320 VDC

**Operating Temp Range:**  
-55 °C to +125 °C

**Lead-Free Solderable:**  
Yes

**SMT Lead Coplanarity:**  
(0.10 mm) .004" max

**RoHS Compliant:**  
Yes

**Notes:**

Active equalization reference design for Eye Speed® I/O system see [www.samtec.com?EPLSP](http://www.samtec.com?EPLSP)

Some lengths, styles and options are non-standard, non-returnable.

**EDGE RATE**  
CONTACT



**-019**  
= 9 Pairs, 5 Power, 19 positions

**-031**  
= 17 Pairs, 5 Power, 31 positions

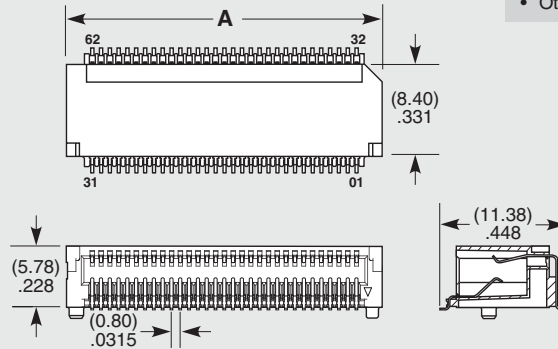
**-S**  
= 30 μm (0.76 μm) Gold on contact, Matte Tin on tail

**-TR**  
= Tape & Reel Packaging

**ALSO AVAILABLE**  
(MOQ Required)

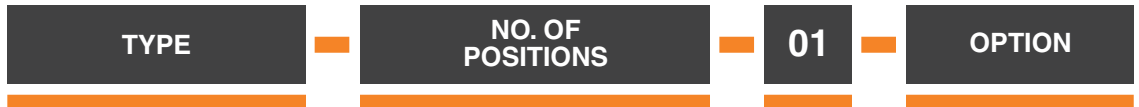
- Other platings

NO. OF POSITIONS	A
-019	(19.08) .751
-031	(28.68) 1.13



**SPECIFICATIONS**

For complete specifications and recommended PCB layouts see [www.samtec.com?ERC](http://www.samtec.com?ERC)



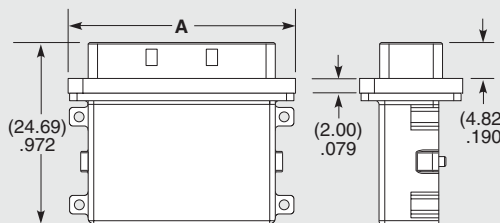
**ERC**  
= Cage

**-019, -031**  
= Number of Positions

**-01**  
= Without Gasket

**-02**  
= With Gasket

NO. OF POSITIONS	A
-019	(30.55) 1.203
-031	(40.15) 1.58



Due to technical progress, all designs, specifications and components are subject to change without notice.

## X-ON Electronics

Largest Supplier of Electrical and Electronic Components

*Click to view similar products for [Standard Card Edge Connectors](#) category:*

*Click to view products by [Samtec](#) manufacturer:*

Other Similar products are found below :

[6565204-6](#) [PKC-156](#) [1437274-4](#) [147889-1](#) [1489165-4](#) [EBT156-12B1X](#) [EBT15622B2X](#) [EBT156-22R2W](#) [1-582587-1](#) [1-582589-1](#) [2-6437275-9](#) [284-0102-12100](#) [306022901000000](#) [307-012-502-202](#) [307-024-526-201](#) [307-056-520-300](#) [307-080-526-208](#) [245-062-520-350](#) [287-0032-12101](#) [306-010-500-112](#) [306-028-525-102](#) [306-240-318](#) [307-036-502-202](#) [307-036-521-301](#) [307-072-526-202](#) [345-060-559-303](#) [368-004-520-201](#) [392-008-559-201](#) [534671-1](#) [5-530501-5](#) [341-240-317](#) [345-029-520-300](#) [345-030-500-301](#) [345-044-500-300](#) [345-220-058](#) [346-240-318](#) [357-030-526-201](#) [387-012-523-300](#) [395-044-520-300](#) [395-100-524-300](#) [50-12B-10](#) [50-6SN-5](#) [09-07-2032](#) [10035388-106LF](#) [10035388-802LF](#) [10122859-009LF](#) [10127905-B04B24BLF](#) [530555-1](#) [EBT156-15A2X](#) [2007209-1](#)