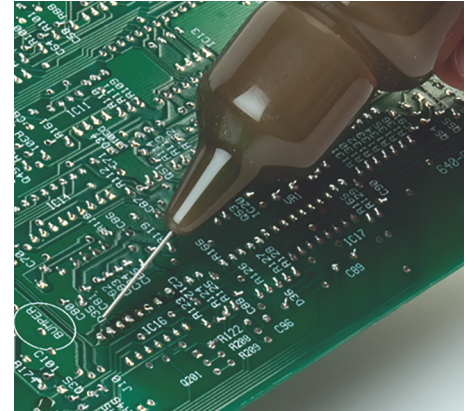


Sponges

Plato® sponges are manufactured with pure cellulose (a wood derivative) which has the ability to absorb many times its weight in water. Also resistant to abrasion and tearing forces that occur during the tip wiping process. Cellular structure is designed to expand when wet, and retain water for long periods of time. Meets ANSI (J-STD-001B) for low sulphur content and fine porosity.

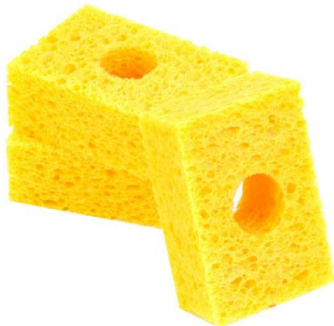
- Extend tip life
- Remove surface oxides
- Remove excess solder



Product Dimensions

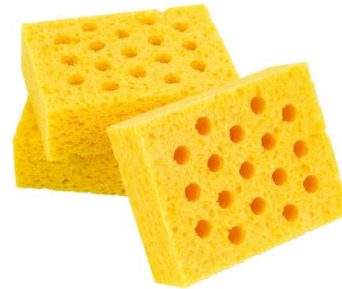
CS-1 Sponge

Comparable to Weller SP-60, Pace 4021-005
1.5" x 2.12" x 1" thick (38mm x 54mm x 25mm)
10 sponges/pack



CS-14M Sponge w/multiple holes

Comparable to Weller T52241999
2.2" x 2.75" 1" thick (55mm x 70mm x 25mm)
10 sponges/pack



CS-17 Sponge

Cut-to-fit sheet
8.5" x 17" x 1" thick (216mm x 432mm x 25mm)
1 sheet



CS-17/625 Thinner Economy Sponge

Cut-to-fit sheet
8.5" x 17" x 0.625" thick (216mm x 432mm x 16mm)
1 sheet

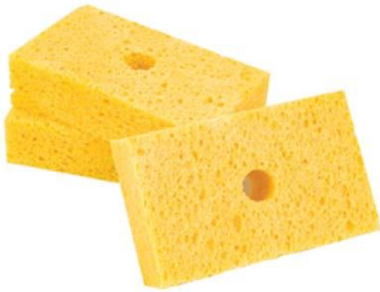


Sponges

Product Dimensions

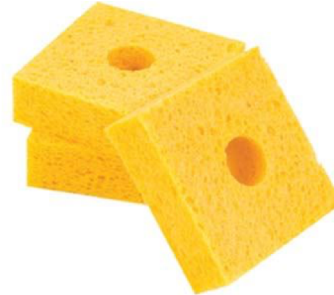
CS-36 Sponge

Comparable to Hexacon 8141, 8141C
 2.25" x 3.5" x 1" thick (57mm x 89mm x 25mm)
 10 sponges/pack



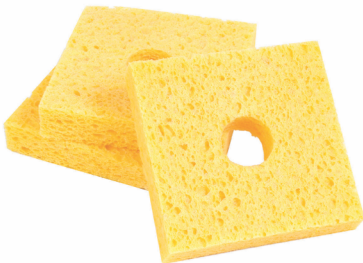
CS-44 Sponge

Comparable to Weller TC205
 2.7" x 2.7" x 1" thick (69mm x 69mm x 25mm)
 10 sponges/pack



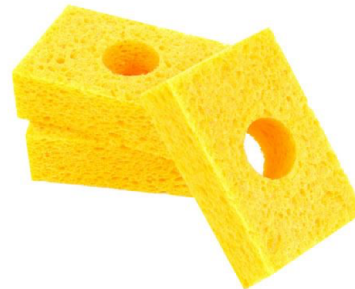
CS-44/625 Sponge

Fits Hakko
 2.7" x 2.7" x 0.625" thick (69mm x 69mm x 16mm)
 10 sponges/pack



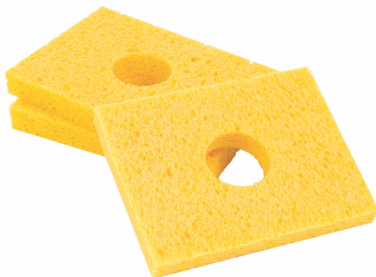
CS-47 Sponge

Comparable to Metcal STSS-YS3, AC-YS3, ACY10,
 Ungar 455, UTC234
 2.1" x 3.2" x 1" thick (53mm x 81mm x 25mm)
 10 sponges/pack



CS-9/625 Sponge

Comparable to Hexacon 8101, 8101C, 8121, 8121C
 3.5" x 4.5" x 0.625" thick (89mm x 114mm x 16mm)
 10 sponges/pack



CS-888H Sponge w/hole

Fits Hakko FX-888, FX-888D
 Comparable to Hakko A1159
 2 3/8" dia x 2"L x 5/8" thick (60mm x 51mm x 17mm)
 10 sponges/bag



Sponges

Product Dimensions

CS-888S Sponge w/slits

Comparable to Hakko A1159

2 3/8" dia x 2"L x 5/8" thick (60mm x 51mm x 17mm)

10 sponges/bag

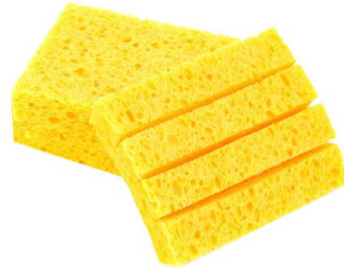


CS-14 Sponge

Comparable to Weller T52241999

2.2" x 2.75" x 1" (55mm x 70mm x 25mm)

10 sponges/pack



Environmental Policy

We are committed to developing products to ensure a safer and cleaner environment. We will continue to meet and sustain the regulations of all federal, state and local government agencies.

Resources

Plato products are supported by a global sales, technical and customer services resources.

For additional technical information on these products or other Plato products in the United States, call the technical sales department at 800-858-4043, email info@plato products.com or visit our web site at: www.plato products.com.

Important Notice to Purchaser/User: The information in this publication is based on tests that we believe are reliable. The results may vary due to differences in tests type and conditions. We recommend that each user evaluate the product to determine its suitability for the intended application. Conditions of use are outside our control and vary widely. Our only obligation and your only solution is replacement of product that is shown to be defective when you receive it. In no case will we be liable for any special, incidental, or consequential damages based on breach of warranty, negligence or any other theory.



● North America

ITW Contamination Control - Electronics
8125 Cobb Center Drive
Kennesaw, GA 30152
800-858-4043
info@plato products.com

● Europe

ITW Contamination Control BV
Saffierlaan 5, 2132 VZ Hoofddorp
The Netherlands
+31 88 1307 400
info@itw-cc.com

● Countries outside the US

Call to locate a distributor in your country

X-ON Electronics

Largest Supplier of Electrical and Electronic Components

Click to view similar products for [Chemicals](#) category:

Click to view products by [Plato](#) manufacturer:

Other Similar products are found below :

[HANDPAD](#) [1624-10S](#) [3045-QT](#) [3065-15S](#) [3125-9S](#) [5200-WHITE-3OZ](#) [70008073302](#) [1398159-1](#) [S1255-04-34X100FT](#) [3748-Q-58"x8"](#) [FO-25DT](#) [13844](#) [S1009-KIT-A-CS8606](#) [8361-P](#) [2216-GRAY-2OZ](#) [DP100-200ML](#) [1743-2FP](#) [2310-10](#) [VERSIL406](#) [826-450G](#) [SS4120-1P](#) [3789-Q](#) [9729](#) [9223](#) [9176](#) [600-0510](#) [3748PG](#) [04952-00531-00](#) [04952-00533-00](#) [10-50L](#) [3748-Q-5/8"X8"](#) [3764-TC](#) [3M 9087](#) [3M 9088](#) [AS1700](#) [120-320](#) [BLR-15ML](#) [HYBRICX 35C](#) [7552](#) [7558](#) [3748-V-O-Q-5/8"X8"](#) [3764-Q](#) [3779-TC](#) [3797TC](#) [3M 9086](#) [100500F00000G](#) [101800F00000G](#) [1610-5G](#) [1610-G4](#) [1621-5G](#)