

THIS DRAWING IS UNPUBLISHED. RELEASED FOR PUBLICATION
 © COPYRIGHT - By - ALL RIGHTS RESERVED.

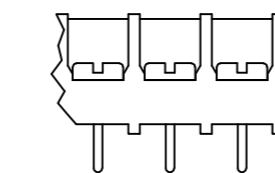
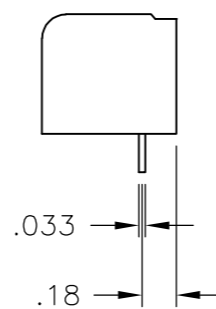
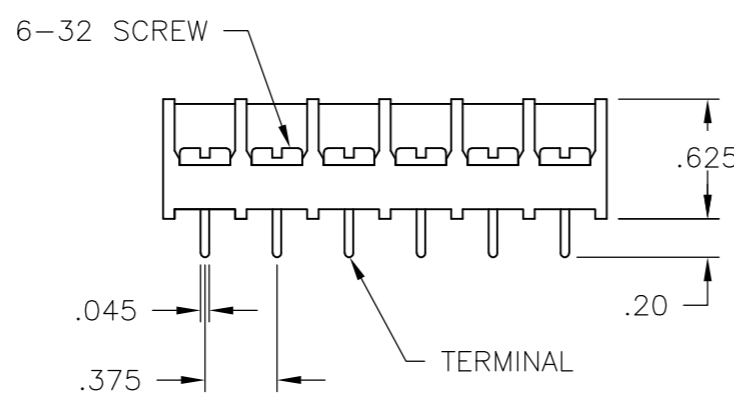
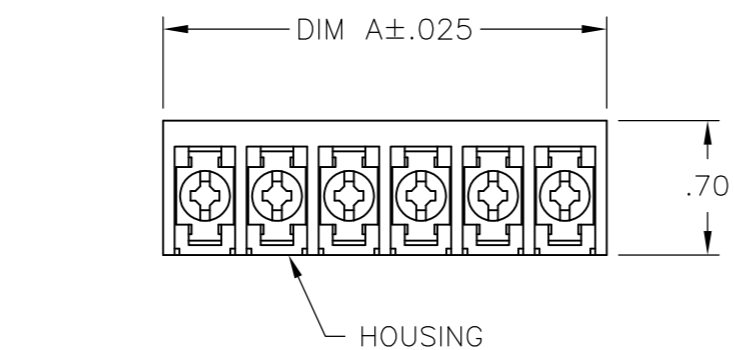
| LOC | DIST | REVISIONS | | | | | |
|-----|------|-----------|-----|---------------------------|---------|-----|------|
| FT | 0 | P | LTR | DESCRIPTION | DATE | DWN | APVD |
| | | C4 | | REVISED PER ECO-11-014078 | 12JUL11 | HMR | CR |

MATERIAL:
 HOUSING: THERMOPLASTIC, UL94V-0 BLACK.
 TERMINALS: BRIGHT TIN PLATED, COPPER ALLOY.
 SCREWS: 6-32, STEEL, ZINC PLATED WITH CLEAR CHROMATE.
 UNLESS OTHERWISE NOTED.

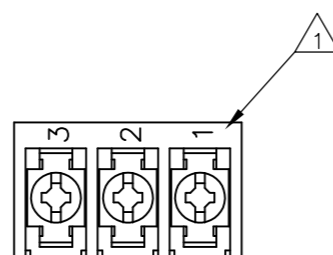
ELECTRICAL:
 RATED CURRENT UL/CSA:
 CLASS C: 25A, 300V.
 CLASS D: 5A, 600V.
 WIRE RANGE: 12-22 AWG

MECHANICAL:
 RECOMMENDED TIGHTENING TORQUE: 7 IN.-LBS.
 OPERATING TEMP.: 105°C MAX

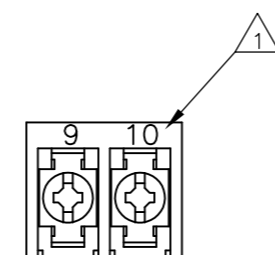
- 1 MARK WITH WHITE PERMANENT INK.
- 2 ALL SCREWS TO BE DRIVEN DOWN TO TERMINAL SURFACE.
- 3 STAINLESS STEEL SCREWS.
- 4 NICKEL PLATED BRASS SCREWS.
- 5 PRELIMINARY PART NUMBER.



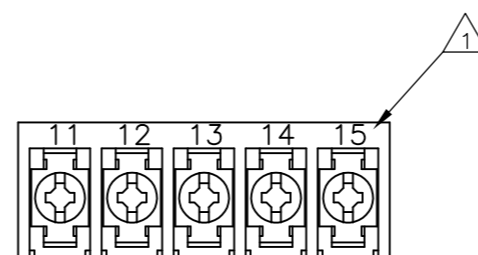
SEE TABLE FOR P/N's



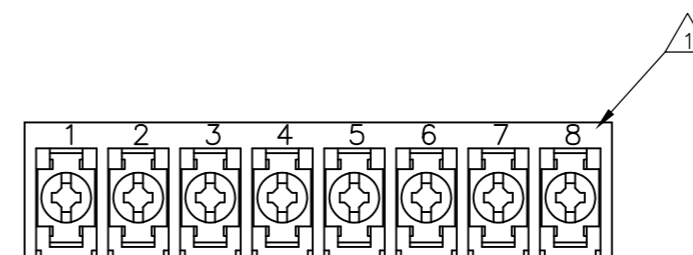
4-1546158-7



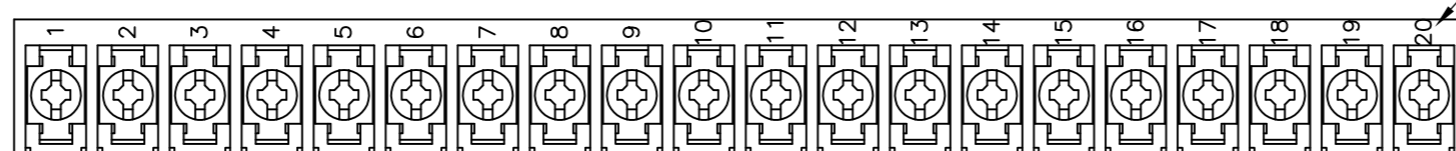
5-1546686-2



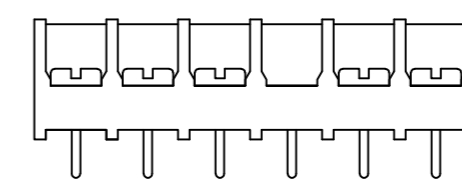
5-1546686-3



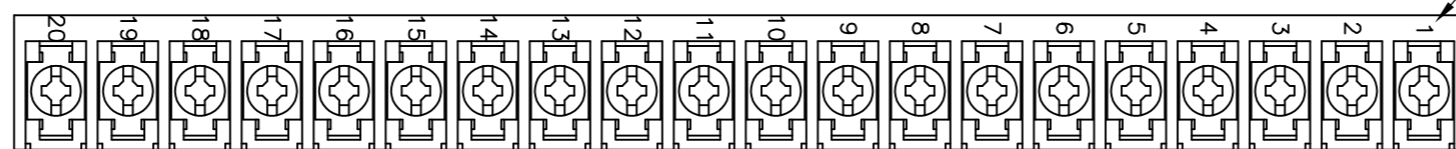
5-1546686-4



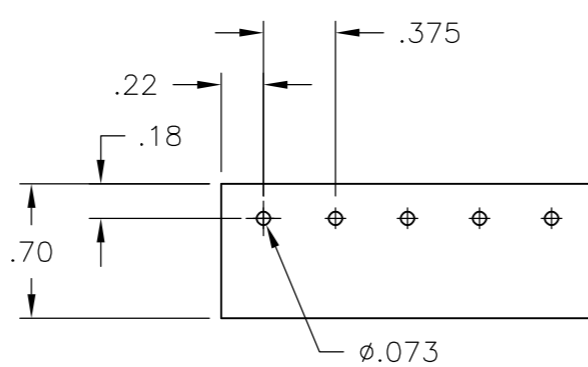
7-1546158-6



6-1546686-1



7-1546158-7



RECOMMENDED PCB LAYOUT

| | DIM A | NO OF POS | CATALOG NUMBER | PART NO |
|----------------|--------|-----------|----------------|-------------|
| OBSOLETE | 11.311 | 30 | 6PCV-30-007 | 8-1546158-7 |
| | 11.311 | 30 | 6PCV-30-007 | 1546814-2 |
| | 10.936 | 29 | 6PCV-29-007 | 1546814-1 |
| | 10.561 | 28 | 6PCV-28-007 | 2-1546686-1 |
| | 10.186 | 27 | 6PCV-27-007 | 2-1546686-0 |
| | 9.811 | 26 | 6PCV-26-007 | 8-1546158-4 |
| | 9.436 | 25 | 6PCV-25-007 | 1-1546686-9 |
| 3 | 9.061 | 24 | 6PCV-24-723 | 3-1437654-8 |
| | 9.061 | 24 | 6PCV-24-007 | 8-1546158-3 |
| | 8.686 | 23 | 6PCV-23-007 | 1-1546686-8 |
| | 8.311 | 22 | 6PCV-22-007 | 1-1546686-7 |
| | 7.936 | 21 | 6PCV-21-007 | 1-1546686-6 |
| 3 | 7.561 | 20 | 6PCV-20-720 | 2-1437654-7 |
| SEE FIGURE | 7.561 | 20 | 6PCV-20-1360 | 7-1546158-7 |
| SEE FIGURE | 7.561 | 20 | 6PCV-20-1359 | 7-1546158-6 |
| | 7.561 | 20 | 6PCV-20-007 | 7-1546158-3 |
| | 7.186 | 19 | 6PCV-19-007 | 1-1546686-5 |
| 3 | 6.811 | 18 | 6PCV-18-1390 | 1546262-5 |
| | 6.811 | 18 | 6PCV-18-007 | 1437654-8 |
| 3 | 6.436 | 17 | 6PCV-17-1206 | 1437654-1 |
| | 6.436 | 17 | 6PCV-17-007 | 1-1546686-4 |
| 3 | 6.061 | 16 | 6PCV-16-719 | 9-1437653-4 |
| | 6.061 | 16 | 6PCV-16-007 | 8-1437653-1 |
| 3 | 5.686 | 15 | 6PCV-15-993 | 7-1437653-6 |
| | 5.686 | 15 | 6PCV-15-007 | 7-1437653-5 |
| 3 | 5.311 | 14 | 6PCV-14-1205 | 7-1437653-0 |
| | 5.311 | 14 | 6PCV-14-007 | 6-1437653-7 |
| 3 | 4.936 | 13 | 6PCV-13-1194 | 6-1437653-5 |
| | 4.936 | 13 | 6PCV-13-007 | 6-1546158-7 |
| 3 | 4.561 | 12 | 6PCV-12-718 | 5-1437653-8 |
| | 4.561 | 12 | 6PCV-12-007 | 5-1437653-2 |
| | 4.186 | 11 | 6PCV-11-007 | 1-1546686-3 |
| 4 | 3.811 | 10 | 6PCV-10-003 | 6-1546158-1 |
| 3 | 3.811 | 10 | 6PCV-10-1193 | 3-1437653-8 |
| | 3.811 | 10 | 6PCV-10-007 | 3-1437653-6 |
| 5 4 | 3.436 | 9 | 6PCV-09-003 | 5-1546686-5 |
| 3 | 3.436 | 9 | 6PCV-09-1270 | 2-1437653-8 |
| | 3.436 | 9 | 6PCV-09-007 | 2-1437653-6 |
| 1 | 3.061 | 8 | 6PCV-08-1397 | 5-1546686-4 |
| 3 | 3.061 | 8 | 6PCV-08-717 | 1-1437653-9 |
| | 3.061 | 8 | 6PCV-08-007 | 1-1437653-4 |
| | 2.686 | 7 | 6PCV-07-007 | 1437653-8 |
| 3 | 2.311 | 6 | 6PCV-06-716 | 1437653-1 |
| | 2.311 | 6 | 6PCV-06-007 | 9-1437652-6 |
| SEE FIGURE 1 6 | 2.311 | 5 | 6PCV-06-1173 | 6-1546686-1 |
| 1 | 1.936 | 5 | 6PCV-05-1396 | 5-1546686-3 |
| 3 | 1.936 | 5 | 6PCV-05-1341 | 8-1437652-6 |
| | 1.936 | 5 | 6PCV-05-007 | 5-1546158-1 |
| 3 | 1.561 | 4 | 6PCV-04-715 | 7-1437652-5 |
| | 1.561 | 4 | 6PCV-04-007 | 6-1437652-8 |
| SEE FIGURE | 1.186 | 3 | 6PCV-03-1256 | 4-1546158-7 |
| | 1.186 | 3 | 6PCV-03-003 | 1546119-2 |
| | 1.186 | 3 | 6PCV-03-007 | 5-1437652-5 |
| 1 | .811 | 2 | 6PCV-02-1395 | 5-1546686-2 |
| 3 | .811 | 2 | 6PCV-02-1339 | 4-1437652-6 |
| | .811 | 2 | 6PCV-02-007 | 4-1437652-0 |

THIS DRAWING IS A CONTROLLED DOCUMENT.

| | | | |
|--------------------|--|------------------------|---|
| DIMENSIONS: INCHES | TOLERANCES UNLESS OTHERWISE SPECIFIED: | DWN S SCHLEGEL 23APR03 | |
| | 0 PLC ± - | CHK S YODER 4/23/04 | |
| | 1 PLC ± - | APVD S YODER 4/23/04 | |
| | 2 PLC ± .01 | PRODUCT SPEC | |
| MATERIAL | FINISH | APPLICATION SPEC | NAME |
| | | WEIGHT | SIZE CAGE CODE DRAWING NO RESTRICTED TO |
| | | CUSTOMER DRAWING | A2 00779 C=4-1437652-0 |
| | | SCALE NTS | SHEET 1 OF 1 REV C4 |

X-ON Electronics

Largest Supplier of Electrical and Electronic Components

Click to view similar products for [Barrier Terminal Blocks](#) category:

Click to view products by [TE Connectivity](#) manufacturer:

Other Similar products are found below :

[CTA-0103](#) [6PCR-02-008](#) [6PCR-05-008](#) [6PCR-08-008](#) [6PCR-21-006](#) [6PCV-06-008](#) [6PCV-10-009](#) [6PCV-15-008](#) [6STR-06-006](#) [6STR-08-006](#) [6STR-12-008](#) [6STR-14-008](#) [6STR-16-008](#) [6STR-17-008](#) [6STR-21-008](#) [6STR-25-008](#) [6STR-27-008](#) [6STV-03-006](#) [6STV-03-008](#) [6STV-04-006](#) [6STV-10-006](#) [6WWR-03](#) [6WWV-11-008](#) [6WWV-12-008](#) [6WWV-16-008](#) [7-1546701-0](#) [72212603](#) [72503-C](#) [73203](#) [76007](#) [7606-602LF](#) [77010-50](#) [796985-3](#) [796988-4](#) [7C1N08](#) [8-1437402-5](#) [8-1437402-7](#) [8-1546158-0](#) [870505](#) [870903](#) [8PCR-06-006](#) [8PCV-02-008](#) [8PCV-04-008](#) [8PCV-05-008](#) [8PCV-09-006](#) [8PCV-15-006](#) [8PCV-16-006](#) [8PCV-17-006](#) [8QCR-03-008](#) [8STV-04-006](#)