

Max. 250 m<sup>3</sup>/h

# DC centrifugal fans

Ø 120 mm



- **Material:** Impeller: PA 6.6 plastic, fiberglass-reinforced  
Rotor: Galvanized
- **Number of blades:** 9
- **Direction of rotation:** Clockwise, looking towards rotor
- **Degree of protection:** IP 20
- **Insulation class:** "B"
- **Installation position:** Any
- **Condensation drainage holes:** None
- **Mode of operation:** Continuous operation (S1)
- **Bearings:** Maintenance-free ball bearings

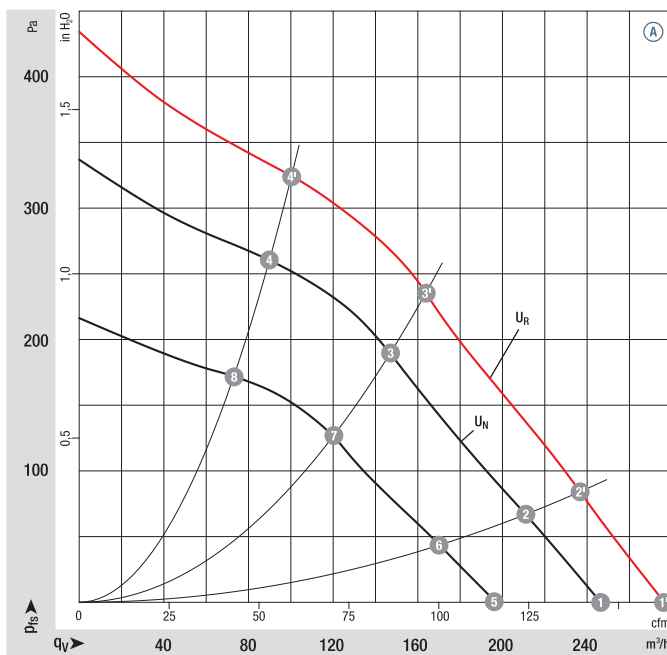
| Nominal data   |            | Curve | Nominal voltage | Nominal voltage range | Air flow          | Nominal speed | Power consumption | Input current | Sound pressure level | Admissible amb. temp. | Technical features and connection diagram |
|----------------|------------|-------|-----------------|-----------------------|-------------------|---------------|-------------------|---------------|----------------------|-----------------------|---|
| Type           | Motor      | VDC   | VDC             | m <sup>3</sup> /h     | rpm <sup>-1</sup> | W             | A                 | dB(A)         | °C                   |                       |   |
| <b>R1G 120</b> | M1G 045-BE | Ⓐ     | 24              | 16-28                 | 250               | 4060          | 26                | 1.20          | 62                   | -25..+50              | p. 259 / G)                               |
| <b>R1G 120</b> | M1G 045-BE | Ⓐ     | 48              | 36-57                 | 250               | 4060          | 26                | 0.60          | 62                   | -25..+50              | p. 259 / G)                               |

Subject to change

### Curves:

U<sub>N</sub> = nominal voltage  
(24 V / 48 V)

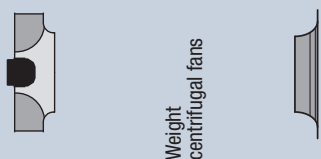
U<sub>R</sub> = over-voltage  
(28 V / 57 V)



|      | n                 | P <sub>ed</sub> | L <sub>pA</sub> | η <sub>HL</sub> |
|------|-------------------|-----------------|-----------------|-----------------|
|      | rpm <sup>-1</sup> | W               | dB(A)           | %               |
| Ⓐ 1' | 4520              | 36              | 65              | —               |
| Ⓐ 2' | 4500              | 36              | 64              | 27              |
| Ⓐ 3' | 4540              | 36              | 61              | 45              |
| Ⓐ 4' | 4750              | 32              | 64              | 39              |
| Ⓐ 1  | 4060              | 26              | 62              | —               |
| Ⓐ 2  | 4000              | 26              | 61              | 27              |
| Ⓐ 3  | 4050              | 26              | 58              | 45              |
| Ⓐ 4  | 4200              | 23              | 61              | 39              |
| Ⓐ 5  | 3270              | 14              | 56              | —               |
| Ⓐ 6  | 3250              | 14              | 55              | 27              |
| Ⓐ 7  | 3280              | 14              | 53              | 45              |
| Ⓐ 8  | 3400              | 13              | 56              | 39              |

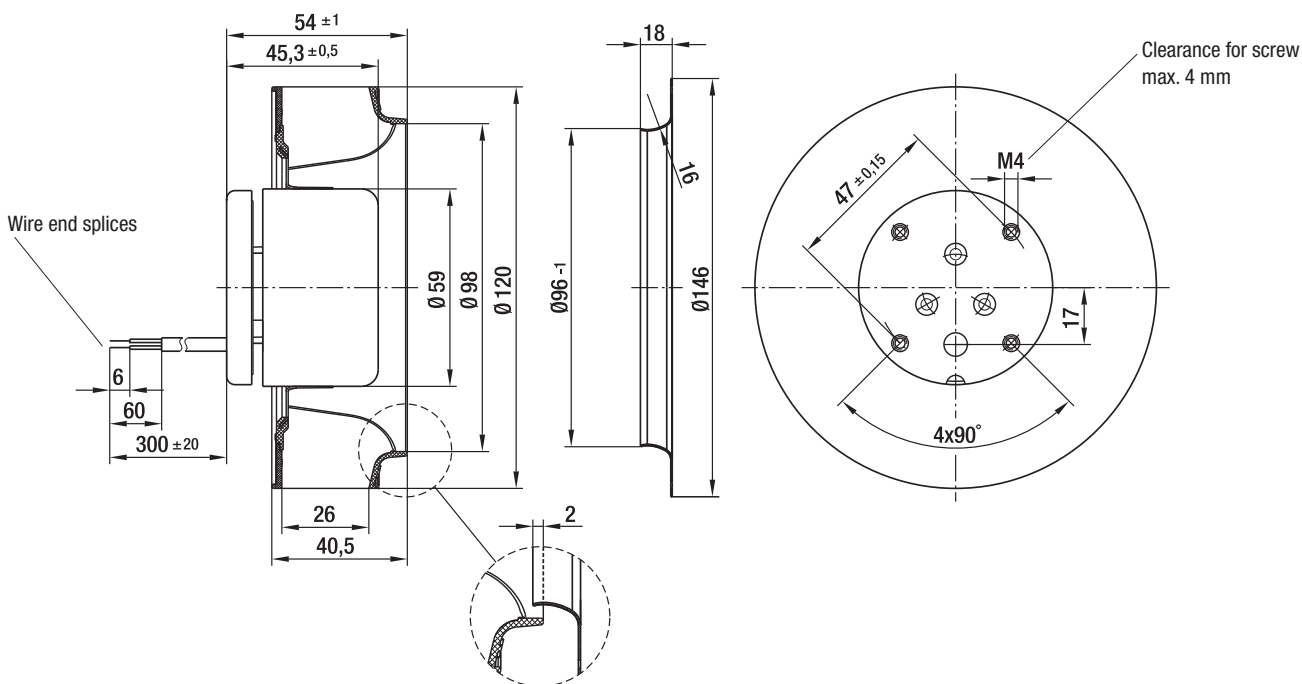
Air performance measured according to: ISO 5801, installation category A, with ebm-papst inlet ring without contact protection. Suction-side noise levels: LWA according to ISO 13347, L<sub>pA</sub> measured at 1 m distance from fan axis. The values given are applicable only under the specified measuring conditions and may differ depending on the installation conditions. In the event of deviation from the standard configuration, the parameters must be checked after installation! For detailed information see <http://www.ebmpapst.com/general-conditions>

- **Technical features:** See connection diagram p. 259
- **Cable exit:** Axial
- **Conformity with standard(s):** EN 60950-1
- **Approvals:** EAC



Weight centrifugal fans

| Centrifugal fans | kg  | Inlet ring (long) |
|------------------|-----|-------------------|
| R1G 120-AD13 -02 | 0.5 | 96120-2-4013      |
| R1G 120-AD11 -02 | 0.5 | 96120-2-4013      |



## X-ON Electronics

Largest Supplier of Electrical and Electronic Components

*Click to view similar products for [AC Fans](#) category:*

*Click to view products by [ebm papst](#) manufacturer:*

Other Similar products are found below :

[M2E068-DF13-79](#) [F1238H24B-FHR](#) [8850A](#) [G9225S05B2-FSR](#) [A2D200-AA04-41](#) [A2E165-AA17-01](#) [R2D140-AB02-14](#) [R4D310-AS18-01](#)  
[R4D400-AD22-06](#) [R4E180-AS11-09](#) [AD0912HB-A7BGL](#) [1500-FAN-01](#) [25.001.1856.0](#) [25.320.1153.1](#) [25.320.1353.1](#) [25.320.4753.1](#)  
[25.320.5453.1](#) [25.330.1353.1](#) [25.330.4853.1](#) [25.330.5153.1](#) [25.330.5353.1](#) [25.340.1053.1](#) [25.350.5253.0](#) [25.600.4053.0](#) [272DL-2LP11-000](#)  
[S2E250-AL06-70](#) [A2D210-AB10-05](#) [A2D240-AA02-02](#) [A2D250-AE22-06](#) [A2E170-AF23-01](#) [F1238S24BT-FSR](#) [25.000.1856.0](#)  
[25.000.2056.0](#) [25.010.1856.0](#) [25.220.3953.1](#) [25.332.2453.1](#) [25.340.0453.1](#) [25.345.5353.0](#) [25.352.1853.0](#) [281DS-2LP11-000B](#) [281DY-](#)  
[1LP14-000B](#) [298DM-2LP11-000](#) [298DS-2LP11-000A](#) [R2S150-AD08-09](#) [344DY-1LP11-000](#) [D2E146-CD51-09](#) [39.703.0253.0](#)  
[USTF1203224VHW](#) [3915100996-SA3](#) [3G2C7MC224](#)