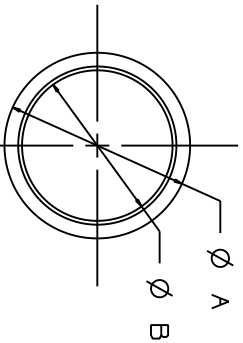
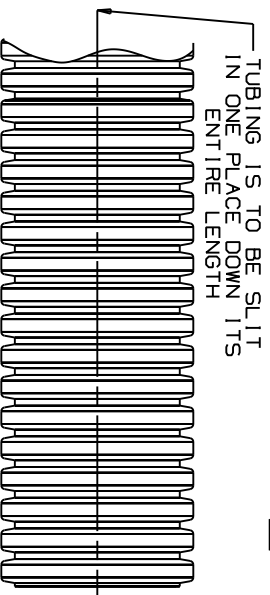


THIS COPY IS PROVIDED ON A RESTRICTED BASIS AND IS NOT TO BE USED IN ANY WAY DETRIMENTAL TO THE INTERESTS OF PANDUIT CORP.  
 MATERIAL: NYLON 6

MATERIAL: LOW DENSITY POLYETHYLENE

| PART NO.    | DIMENSIONS                      |                                 | WALL THICKNESS  | WEIGHT<br>lbs / 100 ft<br>(g) |
|-------------|---------------------------------|---------------------------------|-----------------|-------------------------------|
|             | A                               | B                               |                 |                               |
| CLT25N-630  | 0.397<br>(10.08)                | 0.277<br>(7.04)                 | .0155" ± .0025" | 0.81<br>(370.0)               |
| CLT35N-630  | 0.500<br>(12.7)                 | 0.350<br>(8.89)                 | .0200" ± .0050" | 1.28<br>(580.0)               |
| CLT38N-630  | 0.556<br>(14.12)                | 0.415<br>(10.54)                | .0200" ± .0050" | 1.47<br>(670.0)               |
| CLT50N-630  | 0.670<br>(17.02)                | 0.505<br>(12.83)                | .0200" ± .0050" | 1.98<br>(900.0)               |
| CLT62N-630  | 0.816<br>(20.73)                | 0.650<br>(16.51)                | .0200" ± .0050" | 2.39<br>(1085.0)              |
| CLT75N-630  | 0.935<br>(23.75)                | 0.760<br>(19.30)                | .0200" ± .0050" | 2.75<br>(1250.0)              |
| CLT100N-630 | 1.090<br>(27.69)                | 0.915<br>(23.24)                | .0200" ± .0030" | 3.70<br>(1680.0)              |
| CLT125N-630 | 1.500<br>(38.10)                | 1.290<br>(32.77)                | .0235" ± .0065" | 5.77<br>(2620.0)              |
| CLT150N-630 | 1.728 ± 0.085<br>(43.89 ± 2.16) | 1.479 ± 0.085<br>(37.57 ± 2.16) | .0235" ± .0065" | 6.16<br>(2800.0)              |
| CLT188N-630 | 2.169 ± 0.085<br>(55.09 ± 2.16) | 1.881 ± 0.085<br>(47.78 ± 2.16) | .0235" ± .0065" | 11.20<br>(5088.0)             |

| PART NO.   | DIMENSIONS                      |                                 | WALL THICKNESS  | WEIGHT<br>lbs / 100 ft<br>(g) |
|------------|---------------------------------|---------------------------------|-----------------|-------------------------------|
|            | A                               | B                               |                 |                               |
| CLT25F-20  | 0.397<br>(10.08)                | 0.277<br>(7.04)                 | .0155" ± .0025" | 0.75<br>(340.0)               |
| CLT35F-20  | 0.500<br>(12.7)                 | 0.350<br>(8.89)                 | .0200" ± .0050" | 1.12<br>(510.0)               |
| CLT38F-20  | 0.556<br>(14.12)                | 0.415<br>(10.54)                | .0200" ± .0050" | 1.38<br>(625.0)               |
| CLT50F-20  | 0.670<br>(17.02)                | 0.505<br>(12.83)                | .0200" ± .0050" | 1.85<br>(840.0)               |
| CLT62F-20  | 0.816<br>(20.73)                | 0.650<br>(16.51)                | .0200" ± .0050" | 2.29<br>(1040.0)              |
| CLT75F-20  | 0.935<br>(23.75)                | 0.760<br>(19.30)                | .0200" ± .0050" | 2.64<br>(1200.0)              |
| CLT100F-20 | 1.090<br>(27.69)                | 0.915<br>(23.24)                | .0200" ± .0030" | 3.52<br>(1600.0)              |
| CLT125F-20 | 1.500<br>(38.10)                | 1.290<br>(32.77)                | .0235" ± .0065" | 6.03<br>(2740.0)              |
| CLT150F-20 | 1.728 ± 0.085<br>(43.92 ± 2.16) | 1.482 ± 0.085<br>(39.64 ± 2.16) | .0235" ± .0065" | 7.39<br>(3360.0)              |
| CLT188F-20 | 2.169 ± 0.085<br>(55.09 ± 2.16) | 1.881 ± 0.085<br>(47.78 ± 2.16) | .0235" ± .0065" | 9.10<br>(4127.3)              |



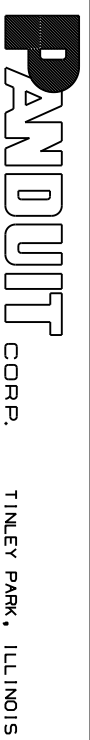
NOTES:

1. SEE PART NUMBER SUFFIX DESIGNATION ON CURRENT PRICE SHEET FOR PACKAGE SIZE AND PART COLOR.

2. FOR ROLL SIZES LARGER THAN 10 FEET, SPLICES MAY OCCUR.

| REV | DATE    | BY  | CHK | DESCRIPTION   | ECN | R | CUST | SUP  |
|-----|---------|-----|-----|---|-----|---|------|------|
| 8   | 6/22/11 | LEF | JVL | B: ADD WALL THICKNESS FROM POLYETHYLENE TO NYLON 6 COLUMN<br>C: CORRECTION TO (MM) CONVERSION ON B DIM. FOR CLT38F-20 FROM (10.39 TO 10.54) |     |   | B    | RAMI |
| 7   | 5/17/11 | LEF | VJS | A: ADDED NOTE #2  |     |   | 7    | RAMI |
| 6   | 9/25/02 | LEF | LEF | CHG MAT. TO LOW DENSITY POLYETHYLENE  |     |   | 6    |      |
| 5   | 4/5/02  | LEF | LEF | CHG DIM ON A & B DIM FOR CLT150F, CLT150F.  |     |   | 5    |      |

DIMENSIONS IN PARENTHESES ARE IN METRIC UNITS  
 CAD FILENAME/LAYERS G03597BN\_DC\_GB0222BP\_08/00A



CLT( )N, CLT( )F  
 SLIT CORRUGATED TUBING

UNLESS OTHERWISE SPECIFIED, DIMENSIONAL TOLERANCES ARE:  
 ( .XX ) ± ( .XXX ) ± 0.050 ( 1.27 )  
 IN INCHES, THIRD ANGLE PROJECTION.

UNLESS OTHERWISE SPECIFIED, ALL DIMENSIONS ARE GIVEN IN INCHES, THIRD ANGLE PROJECTION.  
 SCALE NONE  
 DRAWING NO. GB0222BP  
 DATE 9-18-97  
 DRAWN BY CPE  
 MAT'L: SEE ABOVE  
 CHK'D VJS  
 DIM SIZE A

## X-ON Electronics

Largest Supplier of Electrical and Electronic Components

*Click to view similar products for [Non-Heat Shrink Tubing and Sleeves](#) category:*

*Click to view products by [Panduit](#) manufacturer:*

Other Similar products are found below :

[601203-000](#) [CTA-0053](#) [8429-9](#) [8445-7.5](#) [8450](#) [120-116-1-1-09BE](#) [120-116-1-1-09BF](#) [120-116-1-1-09BP](#) [120-116-1-1-12BE](#) [120-116-1-1-12BP](#) [120-123-06](#) [120-123-10](#) [120-125-12BL](#) [120-125-12R](#) [120-125-20R](#) [120-126-09](#) [120-126-09BL](#) [120-126-12](#) [120-126-12BL](#) [120-126-52](#) [120-126-52BL](#) [120-104-12](#) [120-105-1-1-06BE](#) [120-105-1-1-06CE](#) [120-116-1-1-06BP](#) [120-116-1-1-10BP](#) [120-116-1-1-12BF](#) [120-123-12](#) [120-125-09](#) [120-125-12](#) [120-125-12Y](#) [120-125-52BL](#) [120-S002-12](#) [120-S001-09](#) [120-S002-09](#) [121-101-1-1-56BFC](#) [121-101-1-1-64BFC](#) [RAY-90-3.0\(100\)](#) [20675-2](#) [8S42-100FR-CS8184](#) [SAS-115-1-1048-1X](#) [SAS-160-1-1048-1X](#) [RAY-103-10.0\(100\)](#) [RAY-103-4.0\(100\)](#) [4627-S](#) [3-1991136-0](#) [561-SL1000PP](#) [561-SL250FRPP](#) [561-SL375NYGY](#) [561-SL375PE](#)