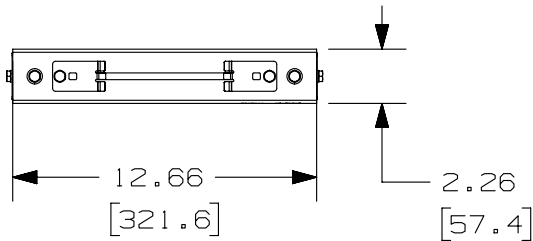
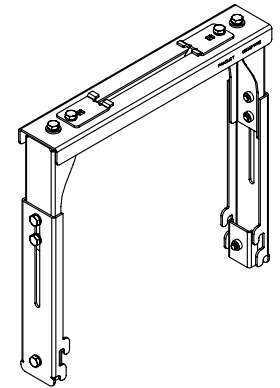
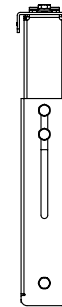
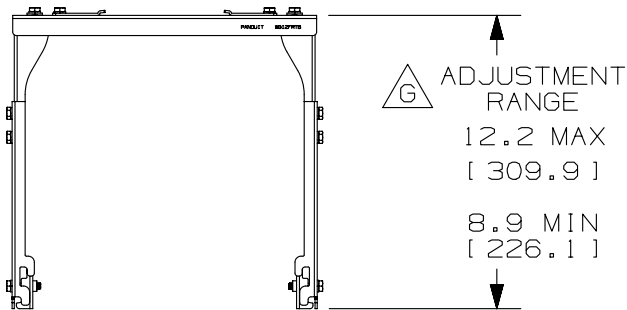


THIS COPY IS PROVIDED ON A RESTRICTED BASIS AND IS NOT TO BE USED IN ANY WAY DETRIMENTAL TO THE INTERESTS OF PANDUIT CORP.

PANDUIT PART NUMBER	WEIGHT
WG12FRTB**	3.79 LBS/EACH (1719.1 g/EACH)



- NOTES:**
- F. 1. PANDUIT PART NUMBER WG12FRTB** INCLUDES:
 - A. ONE (1) WYR-GRID 12" WIDTH FIBERRUNNER TRAPEZE BRACKET ASSEMBLY FOR 4X4 AND 6X4
 - B. TWO (2) WYR-GRID FIBERRUNNER TRAPEZE UPRIGHT SUPPORT BRACKET ASSEMBLIES
 - C. TWO (2) 1/4-20 X 3/4 HEX HEAD CAP SCREWS
 - D. FOUR (4) 1/4 -20 HELICAL SPRING LOCKWASHERS
 - E. TWO (2) 1/4-20 SAE FLAT WASHER
 - F. TWO (2) WYR-GRID INTEGRAL BRACKET LOWER CLIP ASSEMBLIES
 - G. TWO (2) 1/4-20 X 1-1/8 HEX HEAD CAP SCREWS
 - G. 2. DIMENSIONS IN PARENTHESES ARE METRIC.
 - H. 3. PROVIDES ABILITY TO MOUNT FIBERRUNNER 6.6" TO 9.9" ABOVE WYR-GRID.
 - 4. SEE CATALOG FOR ADDITIONAL PART SUFFIXES TO INDICATE PART FINISH AND/OR PACKAGE QUANTITY.



REV	DATE	BY	CHK	APR	DESCRIPTION	ECN
4	09-06-13	SSP	KMC	RN	H. REVISED INTEFRAL TO INTEGRAL ON NOTE 1.F	10D166AF-DC
3	03-26-13	SSP	DWR	RN	RELEASED TO PRODUCTION G. REVISED THE ADJUSTEMENT RANGE TOLERANCES F. ADDED NOTE #4 TO GENERAL NOTES E. REMOVED PRIOR NOTES	10D166AF-DC

TITLE WYR-GRID 12" WIDTH FIBERRUNNER TRAPEZE BRACKET FOR 4X4 AND 6X4 (WG12FRTB**)		CUSTOMER DRAWING	
ITEM REVISION NAME 10D166AF/03.PRT		PANDUIT ™	
DATASET FILE NAME 10D166AF_DC/03E WG12FRTB.PRT		MATERIAL: STEEL	
UNLESS OTHERWISE SPECIFIED, DIMENSIONAL TOLERANCES ARE: IN (mm) .X ± .05 [1.3] .XXX ± ANGLES ±		DRAWING NUMBER: 10D166AF-DC	
DRAWN BY ERK	DATE 06-24-11	CHK DWR	SCALE NONE
SHT 1 OF 1		SIZE A	

D10100DA/11

X-ON Electronics

Largest Supplier of Electrical and Electronic Components

Click to view similar products for [Wire Ducting](#) category:

Click to view products by [Panduit](#) manufacturer:

Other Similar products are found below :

[66200A-10](#) [CVED32VEPG](#) [CVED40VEPG](#) [F512D5-5F140Y](#) [F512D5-5F200Y](#) [F512D5-5F26Y](#) [F512D5-5F30Y](#) [F512D5-5F33Y](#) [F512D5-5F34Y](#) [F512D5-5F45Y](#) [F512D5-5F50Y](#) [F512D5-5F54Y](#) [F512D5-5F66Y](#) [F512D5-5F70Y](#) [F512D5-5F75Y](#) [F512D5-5F90Y](#) [F612D5-5F100Y](#) [F612D5-5F130Y](#) [F612D5-5F50Y](#) [F612D5-5F56Y](#) [F612D5-5F58Y](#) [F6L12D5-5F46](#) [F912D5-5F11Y](#) [F912D5-5F170Y](#) [F912D5-5F175Y](#) [F912D5-5F230Y](#) [F912D5-5F300Y](#) [F912D5-5F55Y](#) [F912D5-5F56Y](#) [F912D5-5F63Y](#) [F912D5-5F6Y](#) [F912D5-5F75Y](#) [F912D5-5F85Y](#) [F912D5-5F86Y](#) [F912D5-5F88Y](#) [F912D5-5F96Y](#) [FAP0047WBLMTP](#) [FAP12WBRDRDDLZ](#) [FAP12WDYLYLDLZ](#) [FAP12WEORORDLZ](#) [FAP6WEORORDLZ](#) [FAP6WFDBDBDLZ](#) [FAP8WEORORDLZ](#) [FCE2UWCL](#) [800A-LB](#) [802A-ECSP](#) [802I-ICSP](#) [FJQADH](#) [FJQFXT](#) [PED10](#)