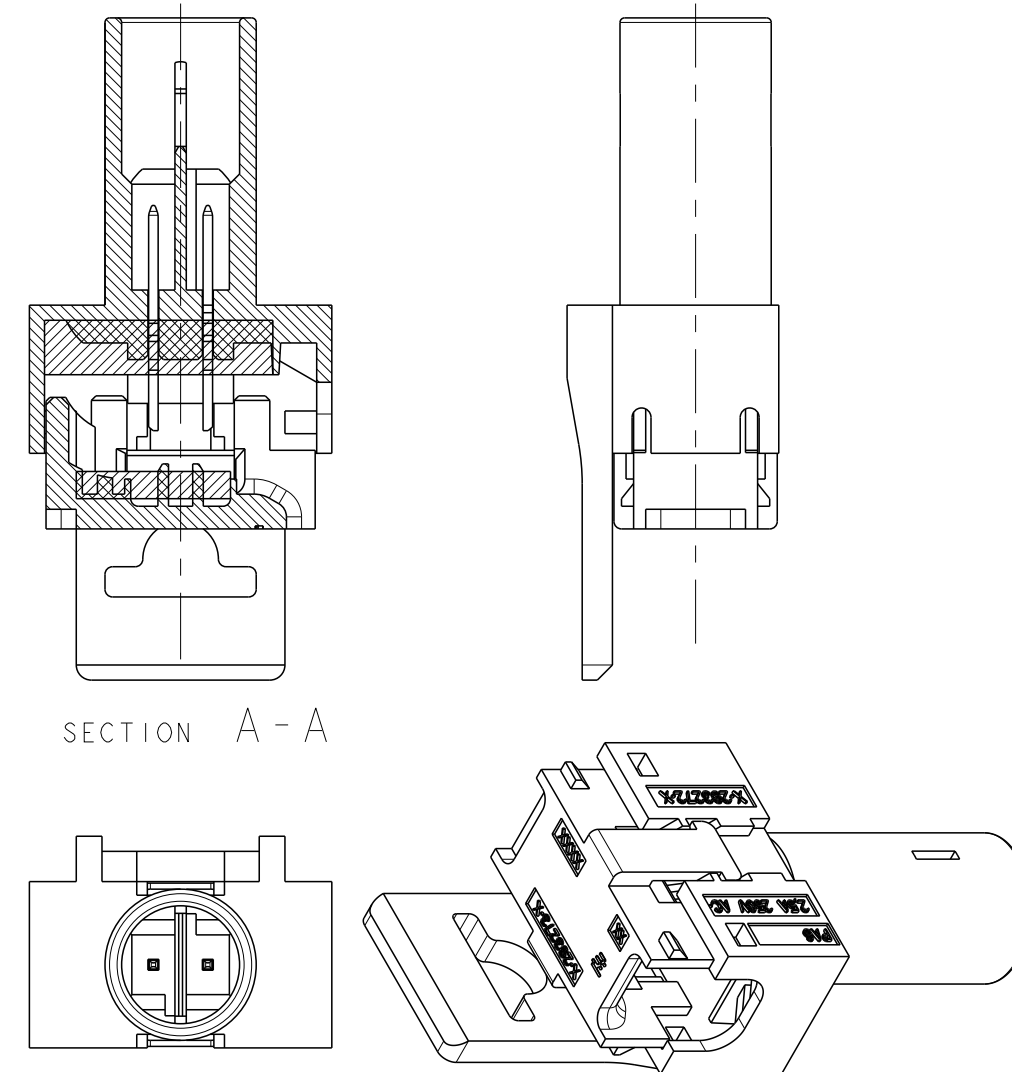
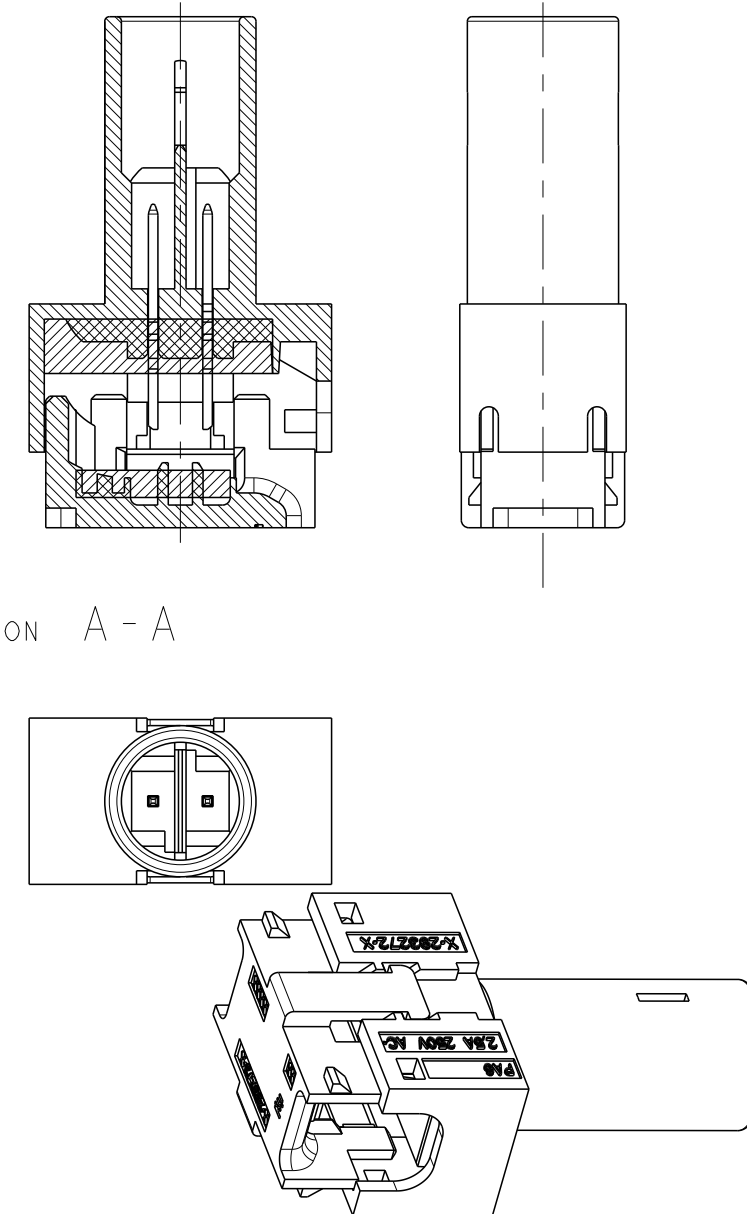


P/N 0-293270-2 AS SHOWN
POLARIZATION KEY HV-1



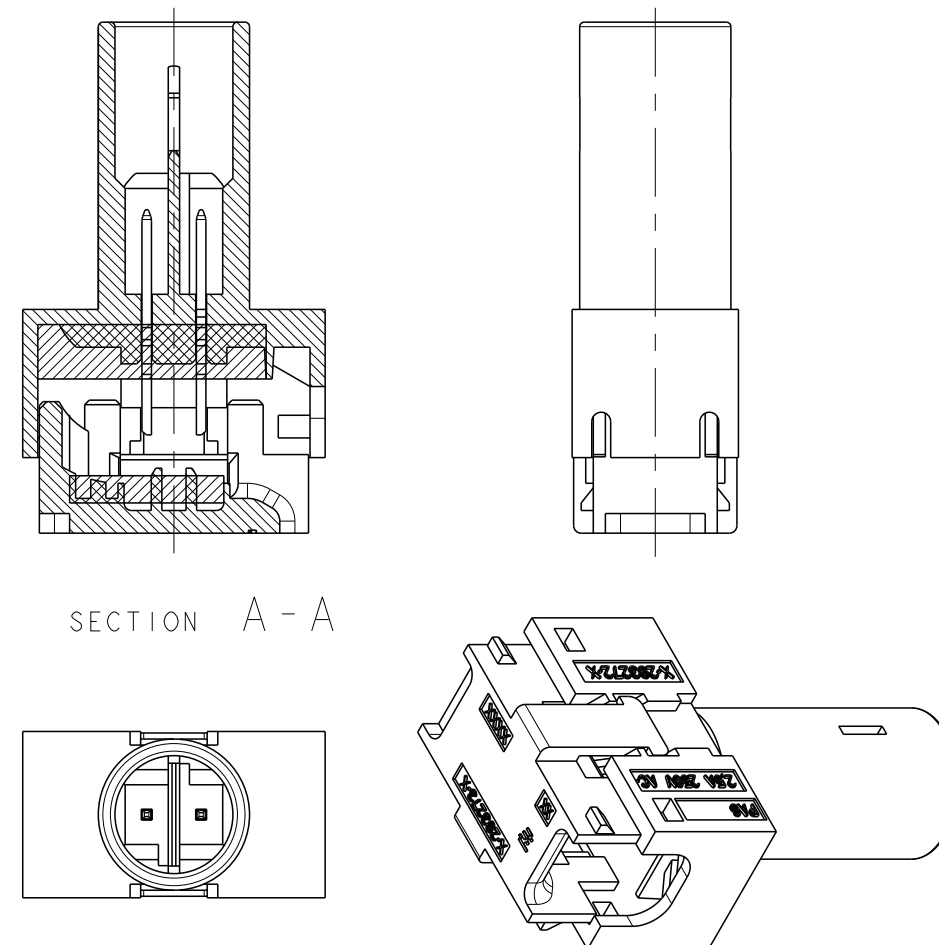
SECTION A - A



CABLE H03VVH2-F
2x0.75 mm²



Technical drawing of a shaft with a keyway. The drawing shows a cross-section of the shaft with a keyway. The dimensions are: 3.4 (total width), 5.60 (width of the shaft), 0.50 (width of the keyway), and 0.60 (width of the key).

P/N 0-293270-4 AS SHOWN
POLARIZATION KEY HV-1



MISSING DIMENSION SEE P/N 0-...-I

PRELIMINARY	1-293270-0	CONNECTOR WITHOUT FLANGE	LV-2	BLACK
	293270-9	END CONNECTOR WITHOUT FLANGE	HV-1	BLACK
	293270-8	END CONNECTOR WITHOUT FLANGE	LV-2	YELLOW
	293270-7	CONNECTOR WITHOUT FLANGE	LV-2	YELLOW
	293270-6	END CONNECTOR WITH FLANGE	LV-2	YELLOW
	293270-5	CONNECTOR WITH FLANGE	LV-2	YELLOW
	293270-4	END CONNECTOR WITHOUT FLANGE	HV-1	WHITE
	293270-3	CONNECTOR WITHOUT FLANGE	HV-1	WHITE
	293270-2	END CONNECTOR WITH FLANGE	HV-1	WHITE
	293270-1	CONNECTOR WITH FLANGE	HV-1	WHITE
NOTES	PART NUMBER	DESCRIPTION	POL. KEY	COLOR

THIS DRAWING IS A CONTROLLED DOCUMENT.		DWN A. Vecchia	18JAN2007		 TE Connectivity	
		CHK G. Turco	18JAN2007			
DIMENSIONS: mm	TOLERANCES UNLESS OTHERWISE SPECIFIED:	APVD G. Turco	24MAY2007		NAME BUS BAR 2 POSITION SEALED	
	0 PLC ± 1 PLC ±0.3 2 PLC ±0.05 3 PLC ± 4 PLC ±	PRODUCT SPEC 108-94018				
	ANGLES ±	APPLICATION SPEC 114-20131				
MATERIAL	FINISH	WEIGHT	-	A200779	C-293270	RESTRICTED TO -
CUSTOMER DRAWING			SCALE	2:1	SHEET	OF 2 REV Y1

X-ON Electronics

Largest Supplier of Electrical and Electronic Components

Click to view similar products for [Lighting Connectors](#) category:

Click to view products by [TE Connectivity](#) manufacturer:

Other Similar products are found below :

[21061-9](#) [293300-7](#) [2106117-2](#) [293660-5](#) [293700-2](#) [CNX_H03_NTP](#) [30-9767-BU](#) [3-21030-1](#) [ZCH-110-RGB-I](#) [503471-0290](#) [ES5P09K4F2](#)
[CNXH02NTP](#) [ZCH-110-RGB-J](#) [217-0716-200](#) [192992-0057](#) [1954563-1](#) [217-3030-000](#) [217-3032-000](#) [237-0734-003](#) [DTS24W25-20PN-LC](#)
[1-2213614-2](#) [2834049-3](#) [ES9S002SZZ](#) [2834049-2](#) [2-2834067-3](#) [1-293657-2](#) [2834049-1](#) [293699-2](#) [293701-3](#) [1-2213614-3](#) [2834036-1](#)
[2834037-1](#) [2213614-3](#) [2307526-2](#) [2-2106124-3](#) [2-2834068-3](#) [FLS2SC4001BP](#) [FLSC80352000](#) [FLSC80354000](#) [FLSC80353000](#) [FLSSB8002](#)
[FLSSB8001](#) [FLSC80351000](#) [FLSC80355000](#) [FLSSB4001](#) [FLSC80504000](#) [FLSC80502000](#) [FLSC80501000](#) [FLSSR4001](#) [FLSC80505000](#)