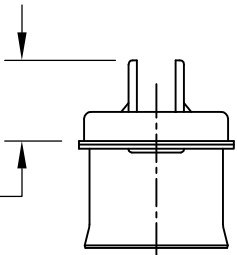
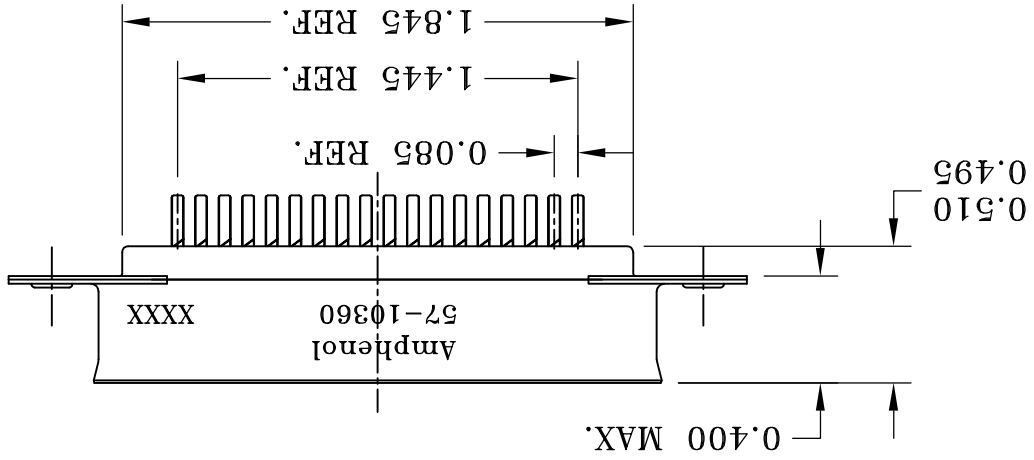
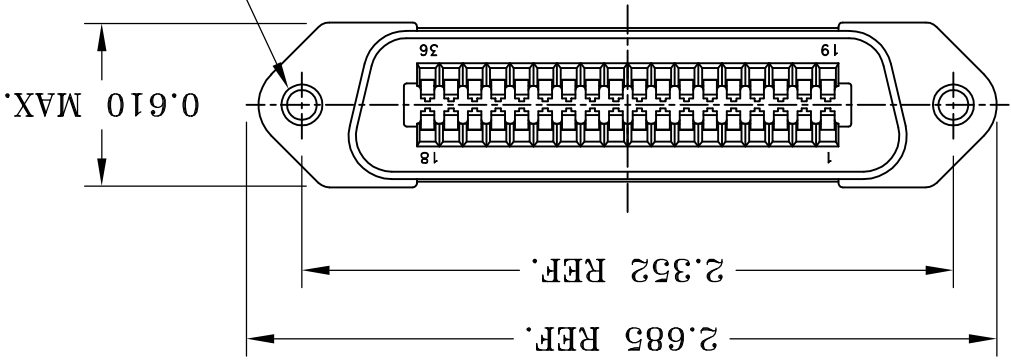


This document is the property of Amphenol Corporation and is delivered on the express condition that it is not to be disclosed, reproduced or used in whole or in part, for manufacture or sale by anyone other than Amphenol Corporation without its prior consent, and that no right is granted to disclose or to use any information in this document.

REVISIONS			
SYM	RCN	DESCRIPTION	DATE
A	HK2447	RELEASED TO PRODUCTION	1/07/03
B	HK#	ADD CHOP OF ROHS	1/22/07
			IP
			Y.M.LEE
			APPROVED

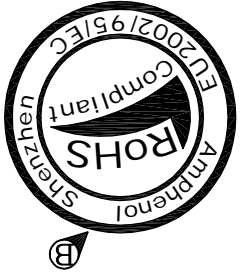


CONNECTOR SIZES	AVERAGE MATING FORCE (POUNDS)
14	5
24	8
36	12
50	15
64	19

TABLE 1

- 11) CONTACT RETENTION FORCE: 2 LBS MAX.
 12) DURABILITY: 250 CYCLES MIN.
 13) VIBRATION: NO INTERRUPTIONS > 1u SEC.
 14) OPERATING TEMPERATURE: -55°C TO +105°C (-67°F TO +221°F)
 15) MATERIAL SHOULD BE FILLED AMPHENOL SPEC# SSN001.
- CUSTOMER INFORMATION DRAWING**

- 1) SOLDER CUP CONTACT: TO ACCOMMODATE 22-30 AWG SOLID AND 24-30 STRANDED CONNECTOR WIRES.
 2) DIELECTRIC: DIALLY-PHTHALATE PER MIL-M-14F TYPE MDG UL-94V0
 3) CONTACT MATERIAL: COPPER ALLOY
 4) CONTACT: 20 MICRO-INCHES MIN. GOLD MATING AREA: 3-5 MICRO-INCHES GOLD TERMINAL AREA: 50 MICRO-INCHES MIN. NICKEL UNDERPLATING ALL OVER.
 5) SHELL MATERIAL: ZINC PLATED STEEL WITH CLEAR CHROMATE COATING
 6) CURRENT CAPACITY: 5 AMPS/CONTACT
 7) VOLTAGE RATING: 700 VOLTS D.C. AT SEA LEVEL
 200 VOLTS D.C. AT 70,000 FEET
 8) INSULATION RESISTANCE: >5000 M OHM
 9) DIELECTRIC WITHSTANDING VOLTAGE: 1200 VAC (RMS) AT SEA LEVEL
 10) CONNECTOR MATING FORCE: REFER TO TABLE 1.



ITEM NO	NOMENCLATURE OR DESCRIPTION		QTY REQD
PARTS LIST			
UNLESS OTHERWISE SPECIFIED			
TOLERANCES			
U.S. METRIC			
X	+/-	.015	CHECKED
XX	+/-	.010	CHECKED
XXX	+/-	.005	CHECKED
FRACTIONS +/-			
ANGLES +/-			
FOR MATERIALS AND FINISHES			
REMOVE SHARP EDGES			
DIMENSIONS			
U.S. INCHES			
-(METRIC)-			
ANGLE OF PROJECTION			
DRAWING FILE: DRAWING\57\05710360.DWG			
TITLE			
36 SIZE PLUG ASSY, RACK & PANEL MINIATURE RIBBON			
REV.	SIZE	DRAWING NO.	
B	A3	C57-10360	
SCALE		NONE	SHEET 1 OF 1

Amphenol

A

B

C

D

1

2

3

4

A

B

C

D

X-ON Electronics

Largest Supplier of Electrical and Electronic Components

Click to view similar products for [D-Sub Micro-D Connectors](#) category:

Click to view products by [Amphenol](#) manufacturer:

Other Similar products are found below :

[M243082311F](#) [M2430834F](#) [M24308/4-6F](#) [65-1920-15](#) [M83513/01-HN](#) [M83513/03-A10N](#) [M83513/03-B14C](#) [M83513/03-D09C](#) [M83513/03-D11N](#) [M83513/03-G02N](#) [M83513/03-G05N](#) [M83513/03-G08C](#) [M83513/03-G09N](#) [M83513/03-G12N](#) [M83513/03-H13N](#) [M83513/04-E15N](#) [M83513/04-G04C](#) [M83513/10-E01NP](#) [M83513/13-B01NP](#) [M83513/13-C01NN](#) [M83513/16-A01CP](#) [M83513/22-D01NP](#) [M83513/25-B01NP](#) [6R2004A30F015](#) [6R4006A28A120](#) [703006A13F060](#) [704002A03F200](#) [705001A13F120](#) [7-1532020-5](#) [748567-1-P](#) [MDB1-31SH003](#) [MDM-15PBS-L58](#) [MDM-15PCBRM7T](#) [MDM-15PH003B-A174](#) [75-068624-59S](#) [MDM-15PH034B](#) [MDM-15SH001L](#) [MDM-15SH004B](#) [MDM-21PH003K](#) [MDM-25PH003B-A174](#) [MDM-25PHW01F-A174](#) [MDM-37PH006L-A174](#) [MDM-37PH048M5-A174](#) [MDM-37SCBRP-A174](#) [MDM-51PBS-L56](#) [MDM-51PSF](#) [MDM-51SH003M7](#) [MDM-51SSM7-A174](#) [MDM-9PBSP-L58](#) [MDM-9PH003M7](#)