

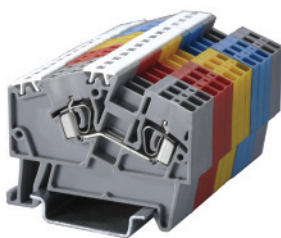
Angular Feed-Through Spring Clamp

These Terminal Blocks are an ideal choice for compact junction boxes having limitations of space and height.

A major advantage of Angular Terminal Blocks over the top wire entry Terminal Blocks is that their profile remains the same across the entire range of Feed Through, Multiple Connection, Ground and Ground Multiple Connection Terminal Blocks.

The other advantages include: Angular entry of wires saving in conductor length, marking / identification facility on the center (top) of the block, multiplication of connections through bridging.

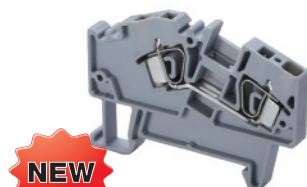
Step Down shorting links are used for shorting spring clamp Terminal Blocks of different sizes. For more details refer to page 77.



AS2.5



AS4



Terminal Width	5 mm			6 mm		
Height x Length	42 x 54 mm			42 x 61.5 mm		
Stripping Length	11 mm			15 mm		
Insulation Material	Polyamide 6.6			Polyamide 6.6		
Type of Connection	2 spring clamps & 2 slots for interconnection			2 spring clamps & 2 slots for interconnection		
Approvals						
Wire Range	22-12 AWG	0.34-2.5 sq.mm	22-12 AWG	22-10 AWG	0.2-4 sq.mm	22-10 AWG
Voltage Rating	600V	800 V	600 V	600 V	800 V	600 V
Current Rating	25 A	24 A	25 A	35 A	32 A	35 A
Other Approvals						

	Cat. No.	Std. Pk.	Cat. No.	Std. Pk.
Terminal Block	AS2.5	100	AS4	100
End Plate	EPAS2.5	50	EPAS4	50

DIN Rail for ordering information refer to pages 90-91				
End Stop for ordering information refer to page 92	CA103	50	CA103	50
	CA702	50	CA702	50
	CA802	50	CA802	50
Jumpers Adjacent	CA801/1	100	CA801/2	100
Jumpers Alternate	CA801/1-3	100	CA801/2-3	100
Push in type wire jumper	CA901/1	100	CA901/2	100
Step Down Jumper see page 98	CA901/5	100	CA901/4	100
	CA901/6	100	CA901/6	100
Marking Tags	MT5	100	MT6	100

X-ON Electronics

Largest Supplier of Electrical and Electronic Components

Click to view similar products for [DIN Rail Terminal Blocks](#) category:

Click to view products by [Altech](#) manufacturer:

Other Similar products are found below :

[1045932](#) [00110420202](#) [00110430402](#) [5724.2/L](#) [592808-3](#) [CTS25U/BL](#) [CTS2.5U-N/Y](#) [91.010](#) [91.040](#) [DP25-GY-ND](#) [15288](#) [90.070](#) [90.905](#)
[91.001](#) [91.020](#) [91.201](#) [91.340](#) [2713793](#) [2757571](#) [280-331](#) [283-317](#) [283-607](#) [2909044](#) [2909798](#) [29-2052](#) [SRT2-OD08CL-1](#)
[CDL4U\(E\)MOV](#) [2757801](#) [2794660](#) [284-317](#) [2890975](#) [2907033](#) [3048496](#) [CTS2.5U-N/O](#) [5542152](#) [5602077](#) [0709880](#) [5520682](#) [5605444](#)
[5607102](#) [EPUSC](#) [SRT2-OD16P](#) [2901288](#) [591620-2](#) [1-591651-1](#) [NRA37-1/2](#) [592814-1](#) [592814-3](#) [SRT2-ID16P](#) [NRA37-12](#)