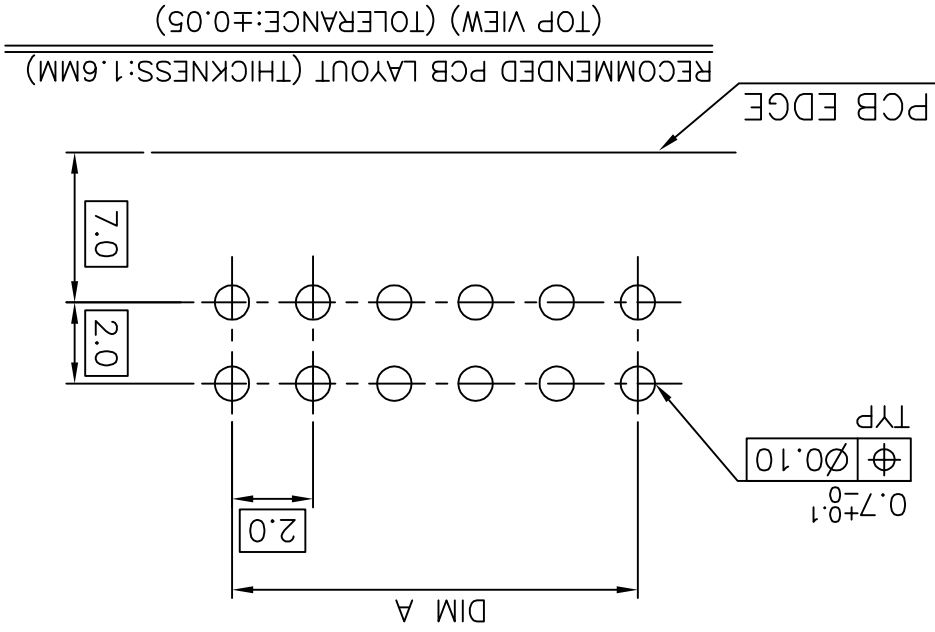
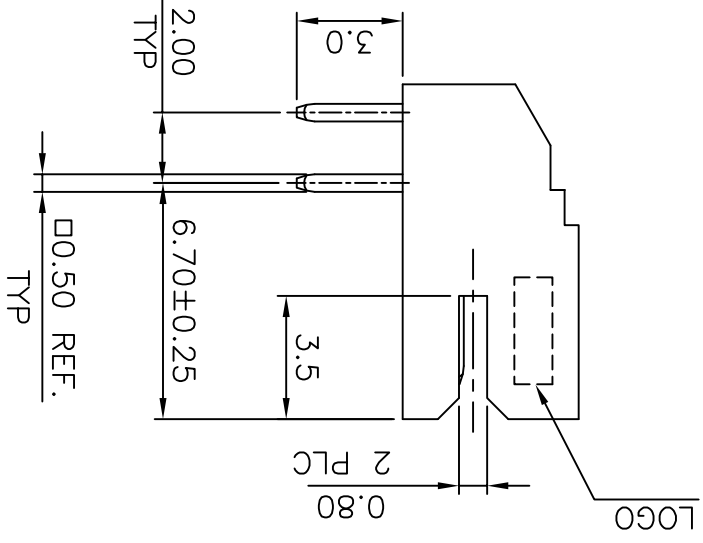
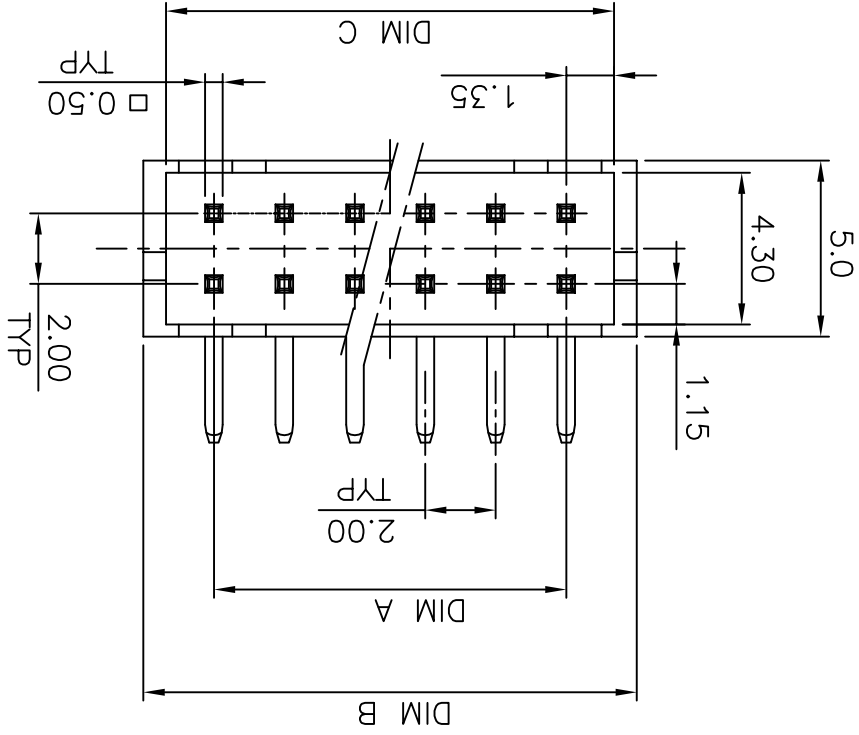
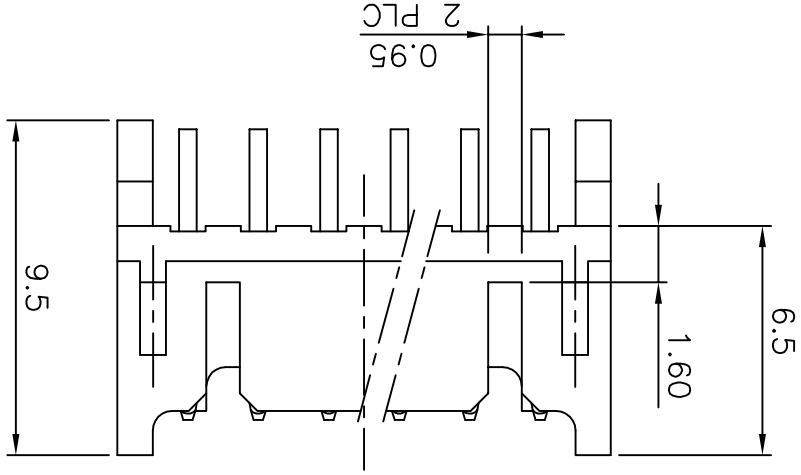


- NOTE:
1. MATERIAL: THERMOPLASTIC UL94V-0, NATURAL COLOR.  
CONTACT: BRASS, THICKNESS=0.20MM.
  2. FINISH: CONTACT: 100U" MIN. TIN PLATED ON CONTACT AREA, 30U" MIN. NICKEL UNDERPLATED OVER ALL.
  3. WAVE SOLDER CAPABLE TO 240°C PER TEST SPEC. 109-202, CONDITION B.



THIS DRAWING IS A CONTROLLED DOCUMENT.

APVD	W. J. KE	24OCT2005
CHK	S. HOU	24OCT2005
DWN	J. LEE	24OCT2005

TOLERANCES UNLESS OTHERWISE SPECIFIED:

0 PLC	±
1 PLC	±0.3
2 PLC	±0.2
3 PLC	±0.1
4 PLC	±
ANGLES	± 3'

CUSTOMER DRAWING		SCALE	SHEET	REV
WEIGHT - GRAMS		SIZE	CAGE CODE	DRAWING NO
QUALIFICATION TEST REPORT		PRODUCT SPEC	2.0MM PITCH HEADER, DIP, RIGHT ANGLE TYPE	
APVD		NAME	TE Connectivity	
CHK		24OCT2005		
DWN		24OCT2005		

DIM C	DIM B	DIM A	POS.	PART NUMBER
6.74	8.0	4.0	6	1470108-6
8.74	10.0	6.0	8	1470108-8
10.74	12.0	8.0	10	1-1470108-0
12.74	14.0	10.0	12	1-1470108-2
14.74	16.0	12.0	14	1-1470108-4
16.74	18.0	14.0	16	1-1470108-6
18.74	20.0	16.0	18	1-1470108-8
20.74	22.0	18.0	20	2-1470108-0
22.74	24.0	20.0	22	2-1470108-2
24.74	26.0	22.0	24	2-1470108-4
26.74	28.0	24.0	26	2-1470108-6
28.74	30.0	26.0	28	2-1470108-8
30.74	32.0	28.0	30	3-1470108-0
32.74	34.0	30.0	32	3-1470108-2

OBSOLETE

LOC	DW	DIST	-
P	LTR	DESCRIPTION	DATE
F4	REVISED (ECR-17-012932)	04SEP2017	T.O.W.H

A

B

C

D

A

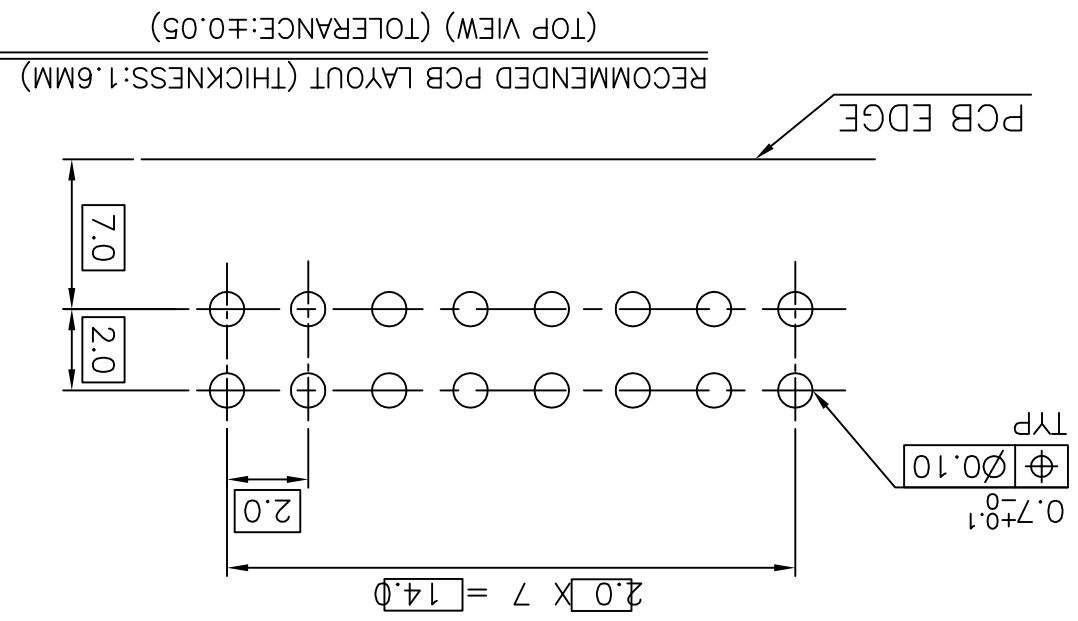
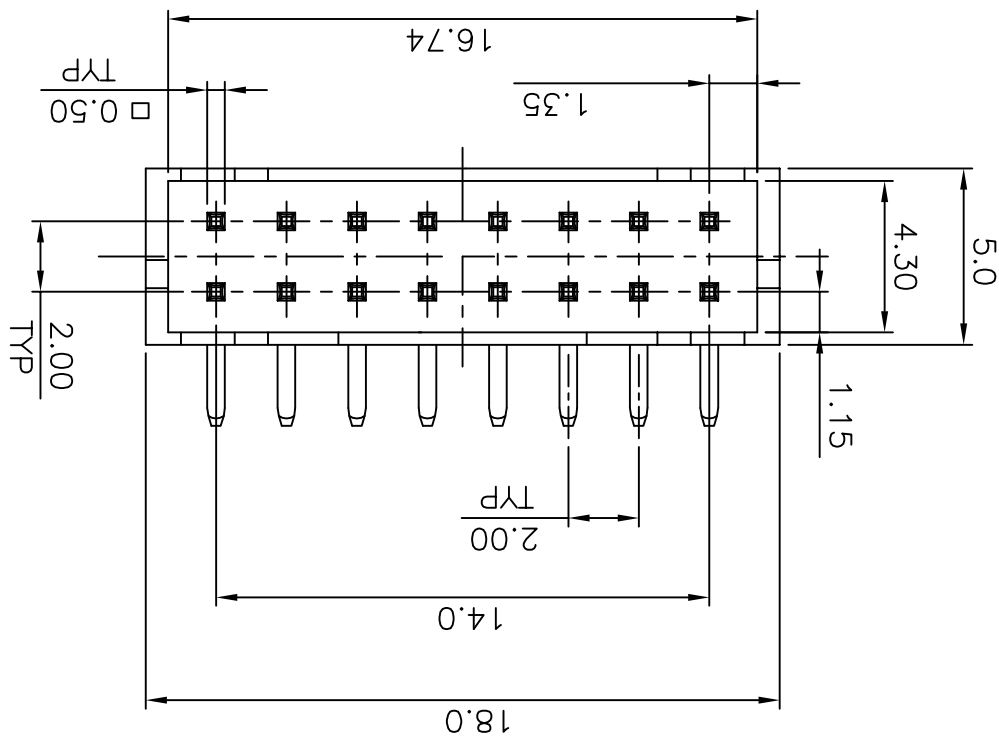
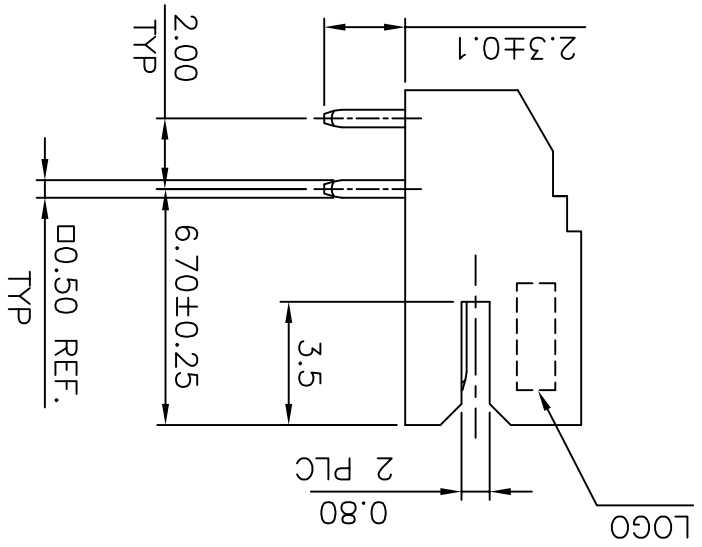
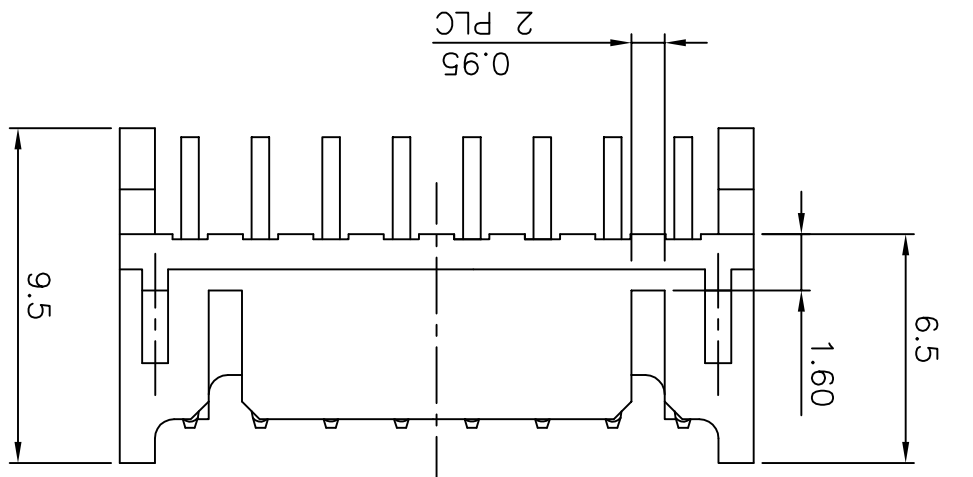
B

C

D

THIS DRAWING IS A CONTROLLED DOCUMENT.  
 TOLERANCES UNLESS OTHERWISE SPECIFIED:  
 DIMENSIONS: MM  
 0 PLC ±  
 1 PLC ±0.3  
 2 PLC ±0.2  
 3 PLC ±0.1  
 4 PLC ±.3  
 ANGLES  
 MATERIAL  
 SEE SHEET 1.  
 FINISH  
 WEIGHT  
 SEE SHEET 1.  
 CUSTOMER DRAWING  
 SCALE  
 SHEET 2 of 3  
 REV F4  
 RESTRICTED TO  
 NAME  
 APVD  
 CHK  
 DWN  
 PRODUCT SPEC  
 APPLICATION SPEC  
 SIZE  
 CAGE CODE  
 DRAWING NO  
 1470108  
 A3  
 00779  
 TE Connectivity

POS. PART NUMBER	16
4-1470108-6	



LOC	DW	DIST	SEE SHEET 1.
P	LTR	DESCRIPTION	DATE
APVD	DWN	REVISIONS	

A  
B  
C  
D

THIS DRAWING IS A CONTROLLED DOCUMENT.

DIMENSIONS: MM

TOLERANCES UNLESS OTHERWISE SPECIFIED:

0 PLC ±  
1 PLC ±  
2 PLC ±  
3 PLC ±  
4 PLC ±

FINISH ANGLES

MATERIAL

WEIGHT

SIZE

CAGE CODE

DRAWING NO

RESTRICTED TO

APVD

NAME

PRODUCT SPEC

APPLICATION SPEC

2.0MM PITCH HEADER, DIP, RIGHT ANGLE TYPE

CUSTOMER DRAWING

SCALE

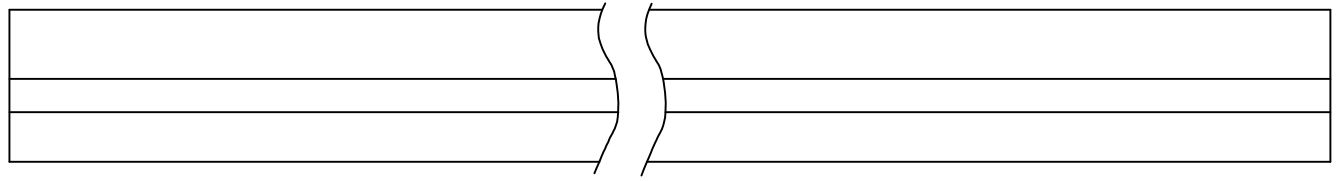
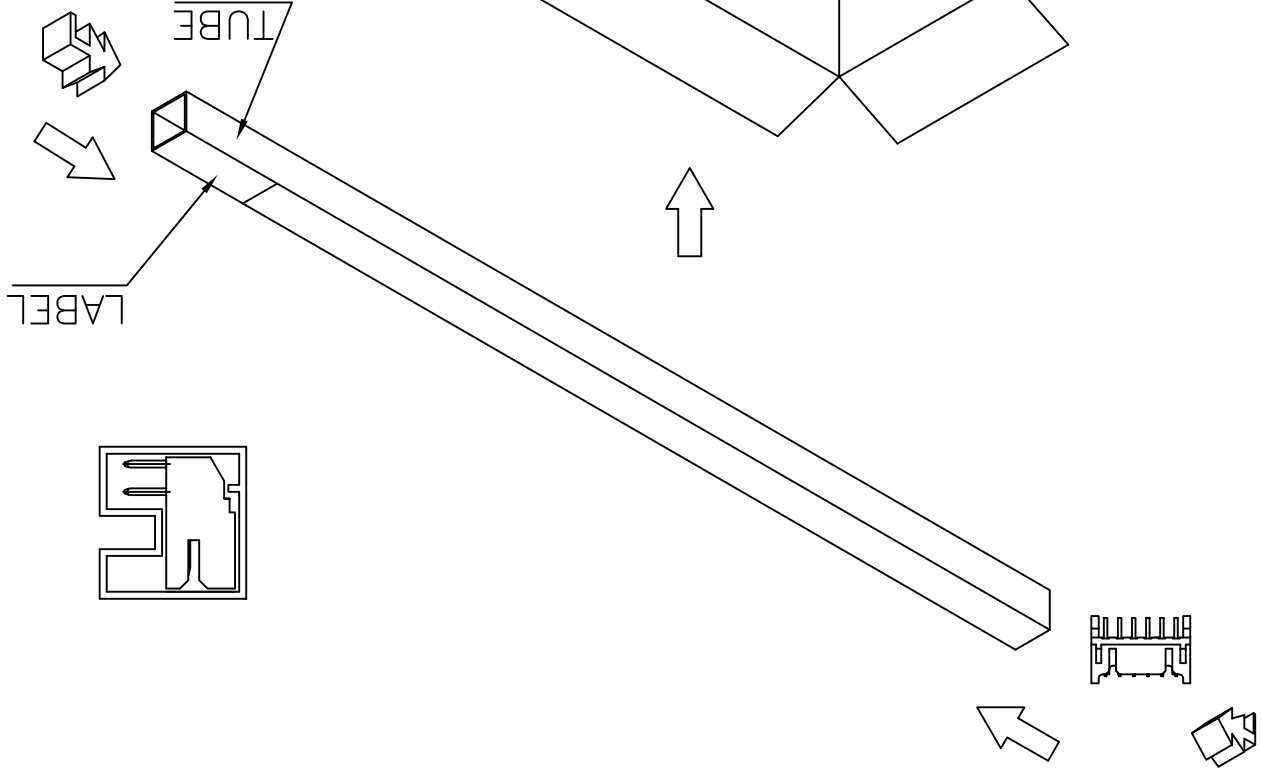
SHEET 3 OF 3

REV F4



NOTES:  
1. DIMENSION :  
TUBE : L=600, W=10, H=10  
SHIPPING CARTON : L=615, W=110, H=100

PART NUMBER	APQ	(PCS/CARTON)	PPQ	(PCS/TUBE)
1470108-6	4,410	70		
1470108-8	3,528	56		
1-1470108-0	2,898	46		
1-1470108-2	2,520	40		
1-1470108-4	2,205	35		
1-1470108-6	1,890	30		
1-1470108-8	1,764	28		
2-1470108-0	1,575	25		
2-1470108-2	1,386	22		
2-1470108-4	1,260	20		
2-1470108-6	1,260	20		
2-1470108-8	1,134	18		
3-1470108-0	1,008	16		
3-1470108-2	1,008	16		
4-1470108-6	1,890	30		



LOC	DIST	APVD	DATE	DESCRIPTION	SEE SHEET 1.
DW					

A

B

C

D

A

B

C

D

1

2

3

4

## X-ON Electronics

Largest Supplier of Electrical and Electronic Components

*Click to view similar products for [Headers & Wire Housings](#) category:*

*Click to view products by [TE Connectivity](#) manufacturer:*

Other Similar products are found below :

[95000-104TRLF](#) [10135584-644402LF](#) [DF62W-EP2022PCA](#) [95000-106TRLF](#) [DF62W-2022SCA](#) [DF62W-EP2022PC](#) [2203348](#) [DF62W-2022SC](#) [1084018](#) [1029039](#) [1084017](#) [802-10-012-10-002000](#) [1112640](#) [1112639](#) [000-34000](#) [0009482033](#) [0009507031](#) [57102-S06-03LF](#) [57202-S52-04LF](#) [PCN6-15S-2.5E](#) [0039019024](#) [58102-G61-06LF](#) [582553-1](#) [0009485154](#) [0009508121](#) [0022285053](#) [0050291907](#) [018731A](#) [LY20-4P-DT1-P1E-BR](#) [02.125.8002.8](#) [60101931](#) [60598-1 \(Cut Strip\)](#) [M1625-3R/100](#) [61062-3](#) [61082-181009](#) [636-1427](#) [638009-1](#) [641938-9](#) [641991-4](#) [644168-1](#) [647662-1](#) [65039-019ELF](#) [65817-002LF](#) [65817-015LF](#) [65863-015LF](#) [66207-023LF](#) [67016-026LF](#) [67046-001LF](#) [67095-007LF](#) [67230-005LF](#)