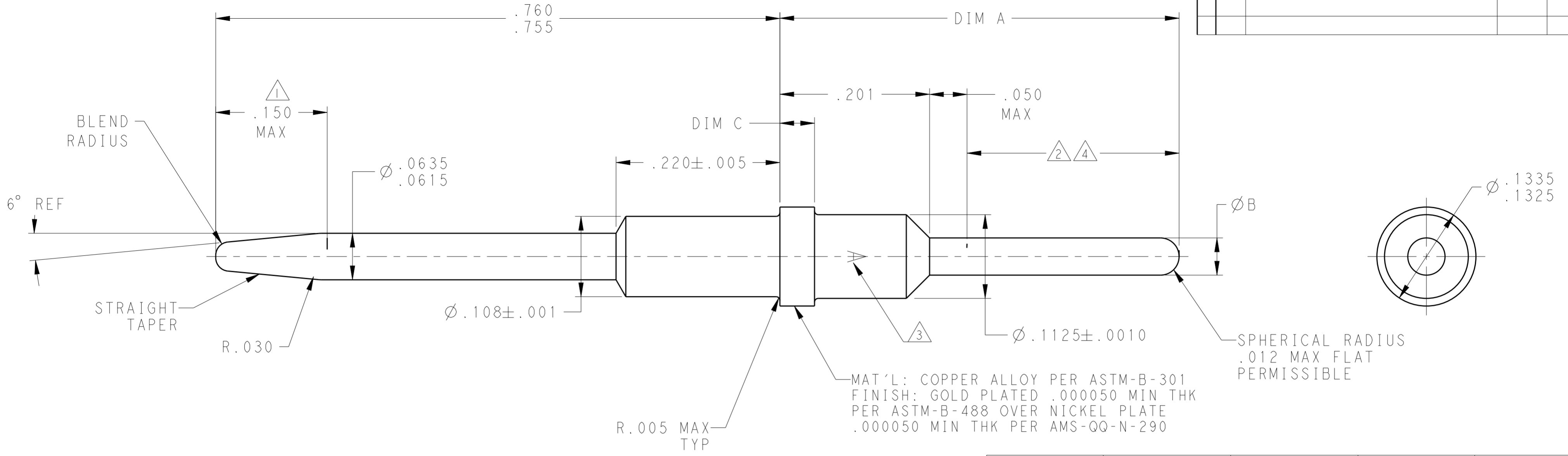


THIS DRAWING IS UNPUBLISHED. RELEASED FOR PUBLICATION
 © COPYRIGHT - BY - ALL RIGHTS RESERVED.

REVISIONS				
P	LTR	DESCRIPTION	DATE	APVD
W		REV PER ECO 13-009837	6-13-13	CT DM



--	.0445-.0485	.048-.052	.776	4-448139-3
2 4	.044-.048	.059 MAX	.701	4-448139-0
2	.044-.048	.059 MAX	.701	3-448139-9
--	.044-.048	.048-.052	.701±.005	3-448139-8
2	.044-.048	.059 MAX	.617±.005	3-448139-5
2 4	.044-.048	.059 MAX	.617±.005	3-448139-4
2	.0445-.0485	.048-.052	.606	3-448139-3
--	.0445-.0485	.059 MAX	.826±.005	3-448139-0
2	.0445-.0485	.048-.052	.826±.005	2-448139-9
--	.0445-.0485	.048-.052	.576	2-448139-5
2	.0445-.0485	.059 MAX	.651	2-448139-2
--	.044-.048	.048-.052	.468±.005	2-448139-1
2	.044-.048	.048-.052	.617±.005	1-448139-8
2	.0445-.0485	.059 MAX	.536±.005	1-448139-5
--	.044-.048	.048-.052	.505±.005	1-448139-4
--	.0445-.0485	.048-.052	.536	1-448139-1
--	.0445-.0485	.0615-.0630	.415	448139-8
--	.0445-.0485	.048-.052	.651	448139-6
--	.0445-.0485	.048-.052	.536	448139-3
REMARKS	DIM C	DIM B	DIM A	PART NO.

- 1 ELECTRICAL ENGAGEMENT POINT.
- 2 THIS AREA SOLDER DIPPED.
- 3 MANUFACTURERS LOGO; LACATION & ORIENTATION OPTIONAL.
- 4 SOLDER IS RoHS-COMPLIANT Sn.

THIS DRAWING IS A CONTROLLED DOCUMENT.

DWN C.C. THOMAS 27OCT2009	 TE Connectivity	NAME POSTED PIN CONTACT, SIZE 16, ARINC 600	
CHK K. THACKSTON 27OCT2009		-	
APVD K. THACKSTON 27OCT2009		-	
PRODUCT SPEC -		-	
MATERIAL SEE TABLE	APPLICATION SPEC -	SIZE A2	CAGE CODE 00779
TOLERANCES UNLESS OTHERWISE SPECIFIED: 0 PLC ± 1 PLC ± 2 PLC ± 3 PLC ±.010 4 PLC ± ANGLES ± FINISH	WEIGHT -	DRAWING NO C-448139	RESTRICTED TO -
SEE TABLE	SEE CALLOUTS	CUSTOMER DRAWING	SCALE 10:1 SHEET 1 OF 1 REV W

X-ON Electronics

Largest Supplier of Electrical and Electronic Components

Click to view similar products for [Rack & Panel Connectors](#) category:

Click to view products by [TE Connectivity](#) manufacturer:

Other Similar products are found below :

[00170420102](#) [00171420202](#) [00171440002](#) [008026165000265](#) [00-8219-072-000-112P44](#) [008219072000112P5](#) [02-014-013-5200-000](#) [613467-000](#) [CTJ112E01E-513](#) [CTJ116E03A-513](#) [M81714/63-22S L/C](#) [M81714/65-12-1](#) [66020-2](#) [CW8958-000](#) [699886-000](#) [D250-50632](#)
[70.400.3240.0](#) [70.955.2453.3](#) [733753-000](#) [F22831-000](#) [780-522-DPX34RG8-02](#) [MMA25-0341D1](#) [8660-501](#) [87.060.0053.0](#) [900709N001](#)
[QRP4-12P-C\(01\)](#) [QR/P6-6S-C\(01\)](#) [AC-600003-004](#) [1218600-1](#) [D-659-0061](#) [DMC-MD 24 C-T](#) [1-445717-6](#) [1484398-2](#) [1484399-2](#) [1484469-2](#) [MR-34MG](#) [1484225-1](#) [1484398-1](#) [1604997-2](#) [1663130-1](#) [1663767-7](#) [1663767-8](#) [MTC100-BF1-P31CS015](#) [MTC100-KT2-0083](#) [MTC100-KT2-0123-003](#) [MTC100-YA1-005](#) [MTCB1X-105-XXX](#) [MTCPQKT1P2PGDC](#) [MTCPQKT1R2PGCA](#) [MTCR-103-04S](#)