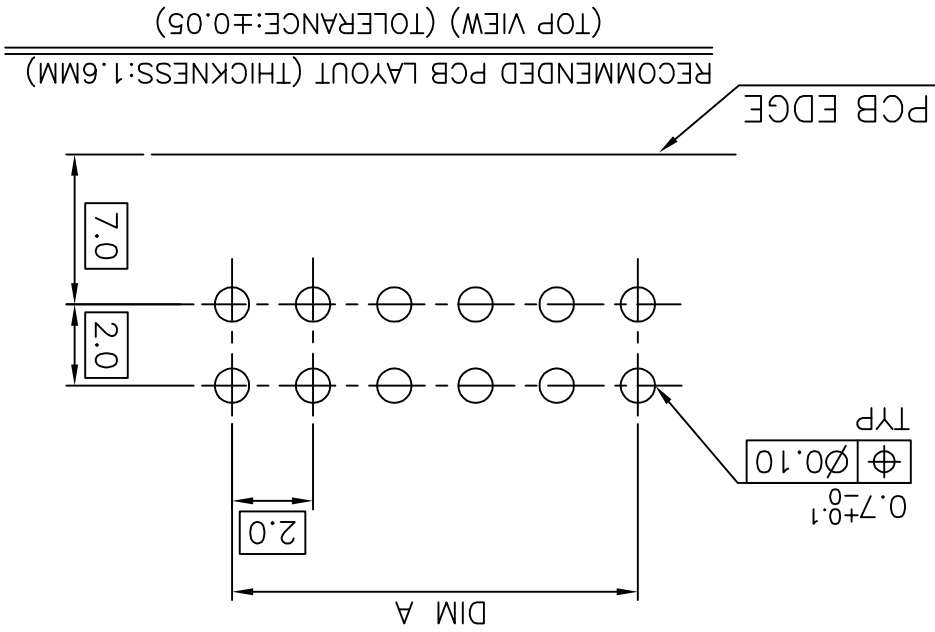
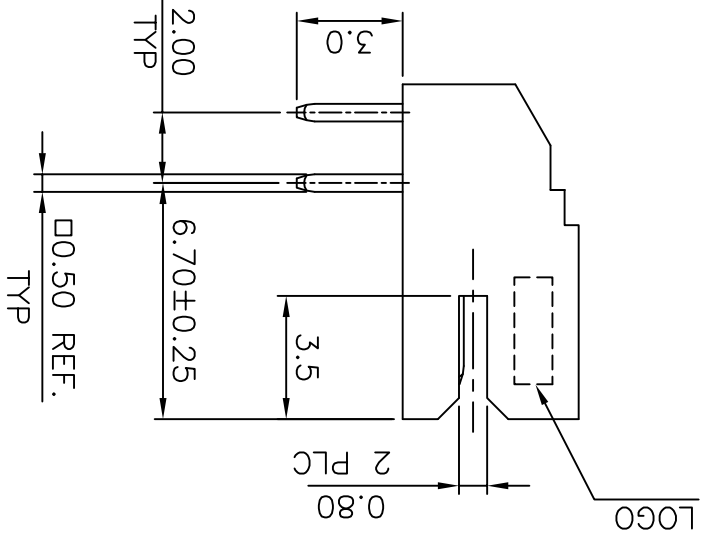
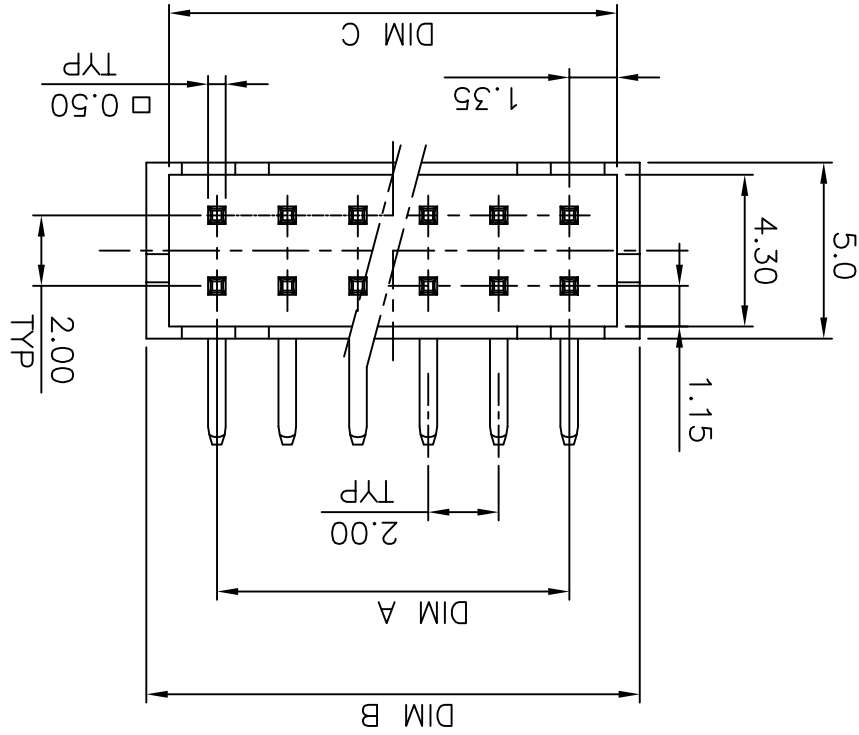
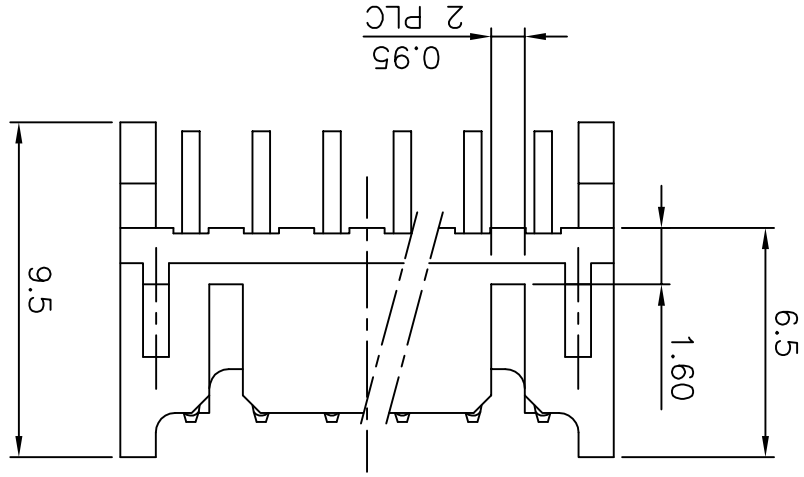


- NOTE:
1. MATERIAL: THERMOPLASTIC UL94V-0, NATURAL COLOR.  
CONTACT: BRASS, THICKNESS=0.20MM.
  2. FINISH: CONTACT: 100U" MIN. TIN PLATED ON CONTACT AREA, 30U" MIN. NICKEL UNDERPLATED OVER ALL.
  3. WAVE SOLDER CAPABLE TO 240°C PER TEST SPEC. 109-202, CONDITION B.



THIS DRAWING IS A CONTROLLED DOCUMENT.

TOLERANCES UNLESS OTHERWISE SPECIFIED:

± 0.3

± 0.2

± 0.1

± 0.05

± 0.02

± 0.01

± 0.005

± 0.002

± 0.001

± 0.0005

± 0.0002

± 0.0001

± 0.00005

± 0.00002

± 0.00001

FINISH ANGLES

0 PLC

1 PLC

2 PLC

3 PLC

4 PLC

5 PLC

6 PLC

7 PLC

8 PLC

9 PLC

10 PLC

11 PLC

12 PLC

13 PLC

14 PLC

15 PLC

16 PLC

17 PLC

18 PLC

19 PLC

20 PLC

21 PLC

22 PLC

23 PLC

24 PLC

25 PLC

26 PLC

27 PLC

28 PLC

29 PLC

30 PLC

31 PLC

32 PLC

33 PLC

34 PLC

35 PLC

36 PLC

37 PLC

38 PLC

39 PLC

40 PLC

41 PLC

42 PLC

43 PLC

44 PLC

45 PLC

46 PLC

47 PLC

48 PLC

49 PLC

50 PLC

51 PLC

52 PLC

53 PLC

54 PLC

55 PLC

56 PLC

57 PLC

58 PLC

59 PLC

60 PLC

61 PLC

62 PLC

63 PLC

64 PLC

65 PLC

66 PLC

67 PLC

68 PLC

69 PLC

70 PLC

71 PLC

72 PLC

73 PLC

74 PLC

75 PLC

76 PLC

77 PLC

78 PLC

79 PLC

80 PLC

81 PLC

82 PLC

83 PLC

84 PLC

85 PLC

86 PLC

87 PLC

88 PLC

89 PLC

90 PLC

91 PLC

92 PLC

93 PLC

94 PLC

95 PLC

96 PLC

97 PLC

98 PLC

99 PLC

100 PLC

101 PLC

102 PLC

103 PLC

104 PLC

105 PLC

106 PLC

107 PLC

108 PLC

109 PLC

110 PLC

111 PLC

112 PLC

113 PLC

114 PLC

115 PLC

116 PLC

117 PLC

118 PLC

119 PLC

120 PLC

121 PLC

122 PLC

123 PLC

124 PLC

125 PLC

126 PLC

127 PLC

128 PLC

129 PLC

130 PLC

131 PLC

132 PLC

133 PLC

134 PLC

135 PLC

136 PLC

137 PLC

138 PLC

139 PLC

140 PLC

141 PLC

142 PLC

143 PLC

144 PLC

145 PLC

146 PLC

147 PLC

148 PLC

149 PLC

150 PLC

151 PLC

152 PLC

153 PLC

154 PLC

155 PLC

156 PLC

157 PLC

158 PLC

159 PLC

160 PLC

161 PLC

162 PLC

163 PLC

164 PLC

165 PLC

166 PLC

167 PLC

168 PLC

169 PLC

170 PLC

171 PLC

172 PLC

173 PLC

174 PLC

175 PLC

176 PLC

177 PLC

178 PLC

179 PLC

180 PLC

181 PLC

182 PLC

183 PLC

184 PLC

185 PLC

186 PLC

187 PLC

188 PLC

189 PLC

190 PLC

191 PLC

192 PLC

193 PLC

194 PLC

195 PLC

196 PLC

197 PLC

198 PLC

199 PLC

200 PLC

201 PLC

202 PLC

203 PLC

204 PLC

205 PLC

206 PLC

207 PLC

208 PLC

209 PLC

210 PLC

211 PLC

212 PLC

213 PLC

214 PLC

215 PLC

216 PLC

217 PLC

218 PLC

219 PLC

220 PLC

221 PLC

222 PLC

223 PLC

224 PLC

225 PLC

226 PLC

227 PLC

228 PLC

229 PLC

230 PLC

231 PLC

232 PLC

233 PLC

234 PLC

235 PLC

236 PLC

237 PLC

238 PLC

239 PLC

240 PLC

241 PLC

242 PLC

243 PLC

244 PLC

245 PLC

246 PLC

247 PLC

248 PLC

249 PLC

250 PLC

251 PLC

252 PLC

253 PLC

254 PLC

255 PLC

256 PLC

257 PLC

258 PLC

259 PLC

260 PLC

261 PLC

262 PLC

263 PLC

264 PLC

265 PLC

266 PLC

267 PLC

268 PLC

269 PLC

270 PLC

271 PLC

272 PLC

273 PLC

274 PLC

275 PLC

276 PLC

277 PLC

278 PLC

279 PLC

280 PLC

281 PLC

282 PLC

283 PLC

284 PLC

285 PLC

286 PLC

287 PLC

288 PLC

289 PLC

290 PLC

291 PLC

292 PLC

293 PLC



THIS DRAWING IS A CONTROLLED DOCUMENT.

DIMENSIONS: MM

TOLERANCES UNLESS OTHERWISE SPECIFIED:

0 PLC ±  
1 PLC ±  
2 PLC ±  
3 PLC ±  
4 PLC ±

FINISH ANGLES

APVD: \_\_\_\_\_

NAME: \_\_\_\_\_

PRODUCT SPEC: \_\_\_\_\_

APPLICATION SPEC: \_\_\_\_\_

WEIGHT: \_\_\_\_\_

SIZE: \_\_\_\_\_

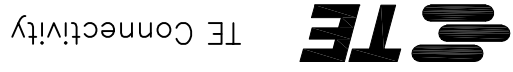
CAGE CODE: \_\_\_\_\_

DRAWING NO: 1470108

SCALE: \_\_\_\_\_

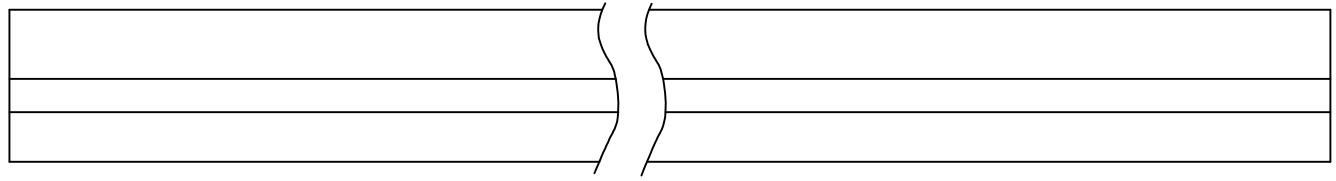
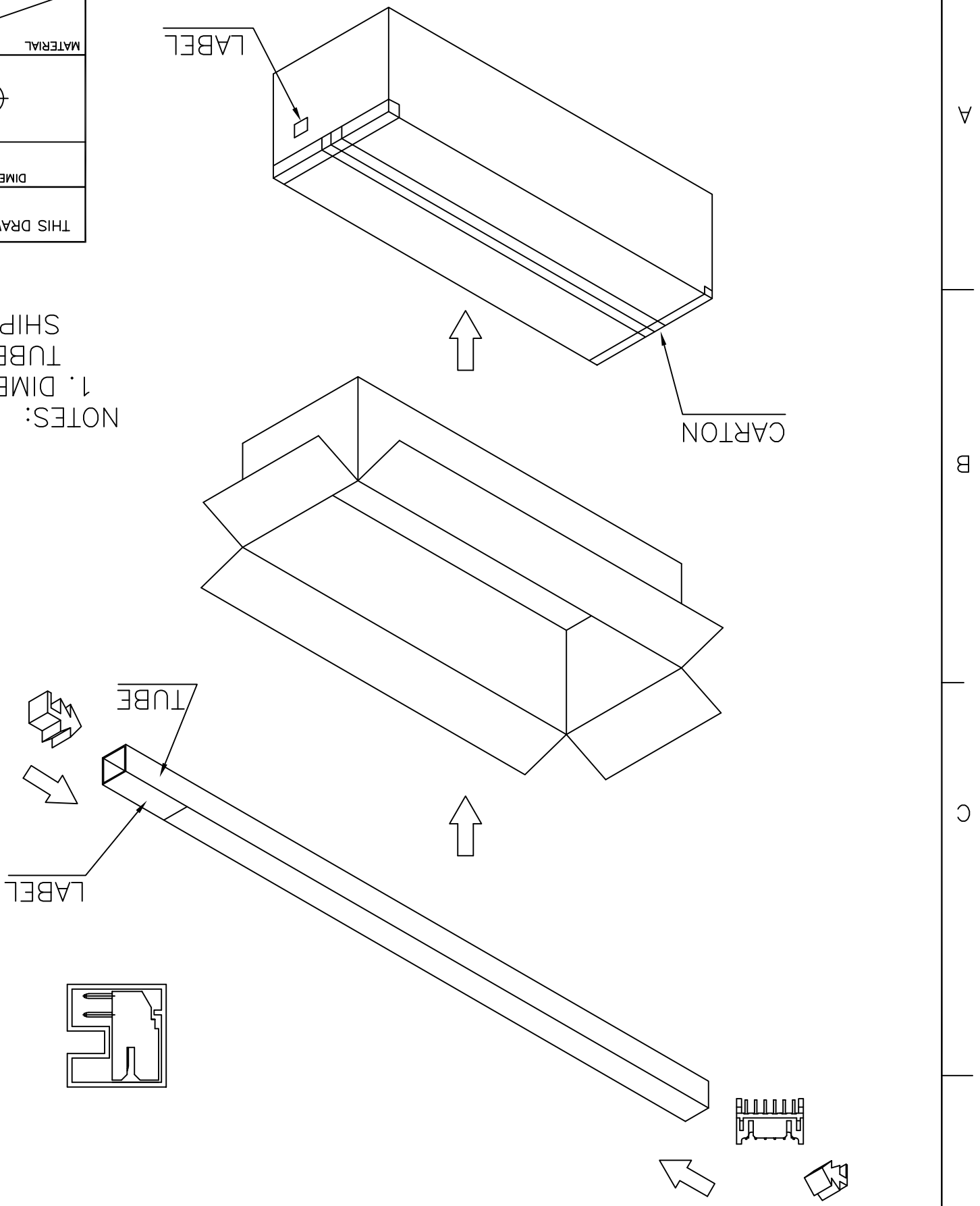
SHEET 3 OF 3

REV F4



PART NUMBER	PPQ (PCS/TUBE)	APQ (PCS/CARTON)
1470108-6	70	4,410
1470108-8	56	3,528
1-1470108-0	46	2,898
1-1470108-2	40	2,520
1-1470108-4	35	2,205
1-1470108-6	30	1,890
1-1470108-8	28	1,764
2-1470108-0	25	1,575
2-1470108-2	22	1,386
2-1470108-4	20	1,260
2-1470108-6	20	1,260
2-1470108-8	18	1,134
3-1470108-0	16	1,008
3-1470108-2	16	1,008
4-1470108-6	30	1,890

NOTES:  
1. DIMENSION :  
TUBE : L=600, W=10, H=10  
SHIPPING CARTON : L=615, W=110, H=100



LOC	DIST	P	LTR	DESCRIPTION	DATE	APVD
DW				SEE SHEET 1.		

A

B

C

D

A

B

C

D

1

2

3

4

## X-ON Electronics

Largest Supplier of Electrical and Electronic Components

*Click to view similar products for [Headers & Wire Housings](#) category:*

*Click to view products by [TE Connectivity](#) manufacturer:*

Other Similar products are found below :

[95000-104TRLF](#) [10135584-644402LF](#) [DF62W-EP2022PCA](#) [95000-106TRLF](#) [DF62W-2022SCA](#) [DF62W-EP2022PC](#) [2203348](#) [DF62W-2022SC](#) [1084018](#) [1029039](#) [1084017](#) [802-10-012-10-002000](#) [1112640](#) [1112639](#) [000-34000](#) [0009482033](#) [0009507031](#) [57102-S06-03LF](#) [57202-S52-04LF](#) [PCN6-15S-2.5E](#) [0039019024](#) [58102-G61-06LF](#) [582553-1](#) [0009485154](#) [0009508121](#) [0022285053](#) [0050291907](#) [018731A](#) [LY20-4P-DT1-P1E-BR](#) [02.125.8002.8](#) [60101931](#) [60598-1 \(Cut Strip\)](#) [M1625-3R/100](#) [61062-3](#) [61082-181009](#) [636-1427](#) [638009-1](#) [641938-9](#) [641991-4](#) [644168-1](#) [647662-1](#) [65039-019ELF](#) [65817-002LF](#) [65817-015LF](#) [65863-015LF](#) [66207-023LF](#) [67016-026LF](#) [67046-001LF](#) [67095-007LF](#) [67230-005LF](#)