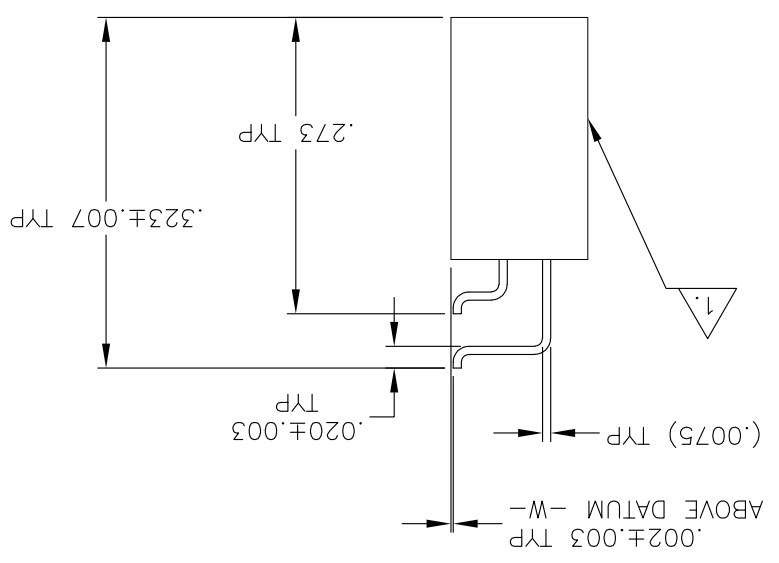
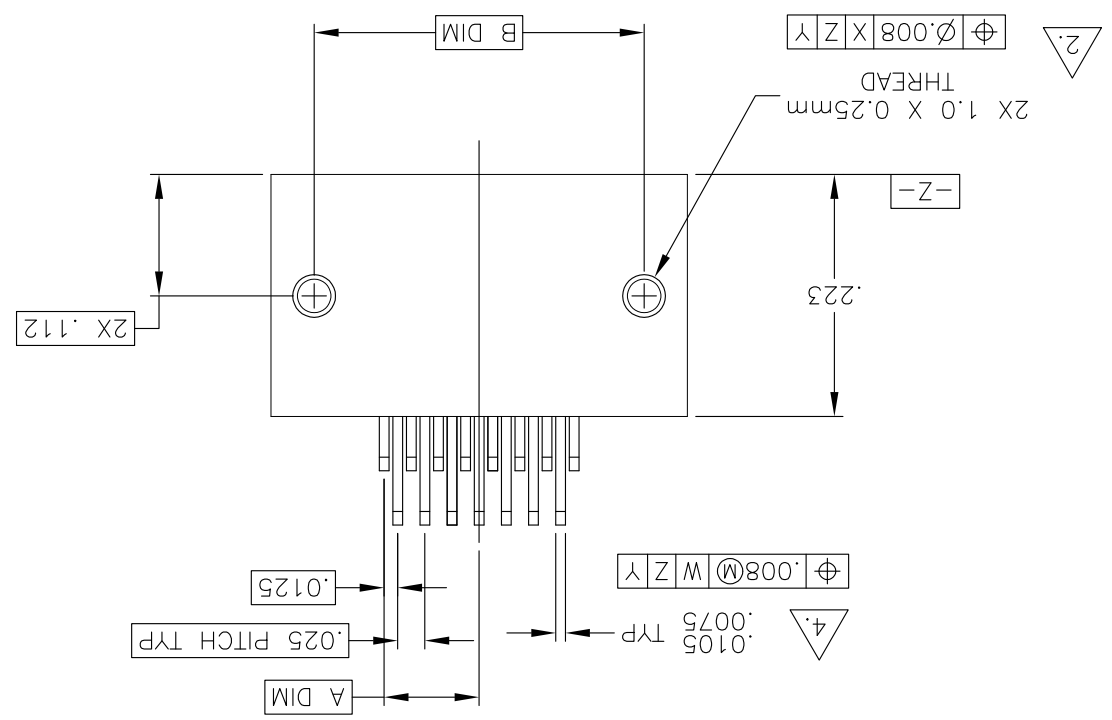
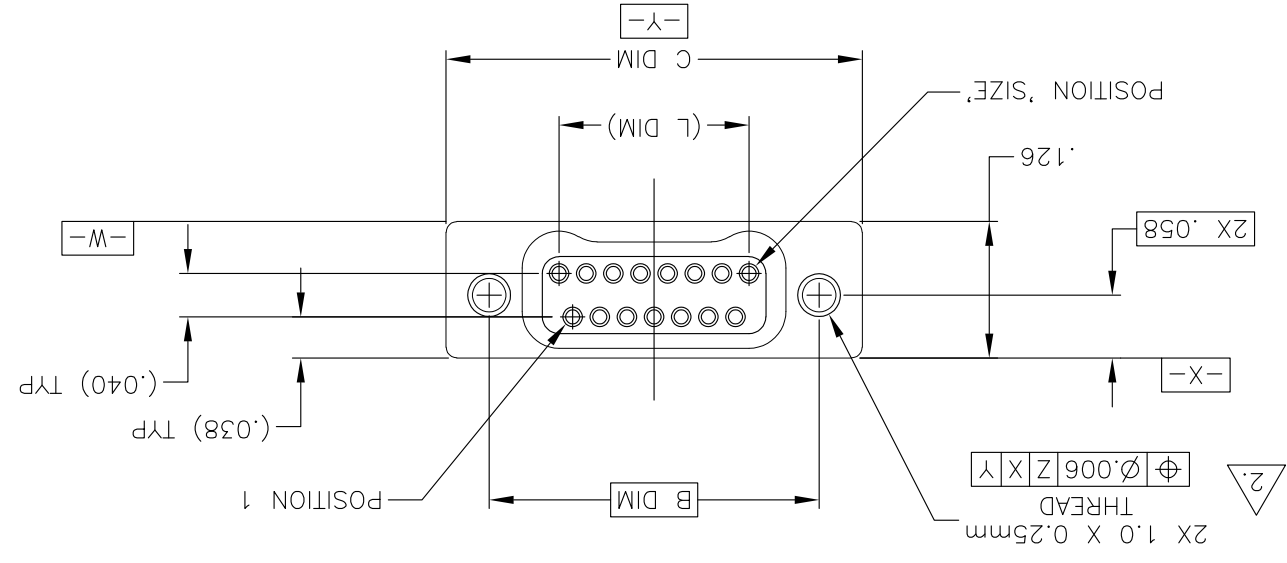


- 6. THIS DRAWING PREVIOUSLY IDENTIFIED AS NANONICS N10138/230
- 5. NANONICS TERMINATION CODE: L2
- 4. SMT LEADS ARE BECU, TIN LEAD PLATED 60/40 COMPOSITION PER SAE-AMS-P-81728.
- 3. MOUNTING HARDWARE IS AVAILABLE WITH THIS CONFIGURATION (NOT SHOWN). HARDWARE MUST BE SPECIFIED IN THE NANONICS PART NUMBER. CONSULT TE CONNECTIVITY FOR DETAILS.
- 2. STANDARD 1.0 X 0.25mm MOUNTING AND JACKSCREW THREADS ARE SHOWN FOR REFERENCE ONLY AND MUST BE SPECIFIED IN THE NANONICS PART NUMBER WHEN REQUIRED. 1.2 X 0.25mm THREADS ALSO AVAILABLE.
- 1. SHELL OPTIONS (TO BE SPECIFIED IN NANONICS PART NUMBER):  
 METAL: 6061-T6 ALUMINUM, ELECTROLESS NICKEL PLATED PER MIL-C-26074 (STANDARD) OR GOLD PLATED PER MIL-G-45204  
 303 STAINLESS STEEL, PASSIVATED PER SAE-AMS-QQ-P-35  
 INSULATOR MATERIAL FOR ALL METAL SHELLS IS LIQUID CRYSTAL POLYMER (LCP) PER MIL-M-24519 OR PER ASTM D5138  
 PLASTIC: LIQUID CRYSTAL POLYMER (LCP) PER MIL-M-24519 OR PER ASTM D5138

THIS DRAWING IS A CONTROLLED DOCUMENT.  
 DWG M. STORRY 15 FEB 01  
 CHK S. KAIN 15 FEB 01  
 NAME -  
 PRODUCT SPEC -  
 APPLICATION SPEC -  
 WEIGHT -  
 SIZE A2  
 CAGE CODE 00779  
 DRAWING NO 1589483  
 RESTRICTED TO -

MATERIAL		SEE NOTES	
FINISH		SEE NOTES	
0 PLC	±	0 PLC	±
1 PLC	±	1 PLC	±
2 PLC	± .010	2 PLC	± .005
3 PLC	±	3 PLC	±
4 PLC	± .1	4 PLC	± .1
DIMENSIONS: INCHES		TOLERANCES UNLESS OTHERWISE SPECIFIED:	
APVD		APVD	
S. KAIN		S. KAIN	
15 FEB 01		15 FEB 01	
M. STORRY		M. STORRY	
15 FEB 01		15 FEB 01	
CUSTOMER DRAWING			
SCALE 8:1			
SHEET 1 OF 2			
REV U2			

THIS DRAWING IS A CONTROLLED DOCUMENT.  
 DWG M. STORRY 15 FEB 01  
 CHK S. KAIN 15 FEB 01  
 NAME -  
 PRODUCT SPEC -  
 APPLICATION SPEC -  
 WEIGHT -  
 SIZE A2  
 CAGE CODE 00779  
 DRAWING NO 1589483  
 RESTRICTED TO -



SIZE	A DIM	B DIM	C DIM ±.0050	L DIM
09	.050	.229	.3085	(.100)
15	.0875	.304	.3835	(.175)
25	.150	.429	.5085	(.300)
37	.225	.579	.6585	(.450)
51	.3125	.754	.8335	(.625)
65	.400	.929	1.0085	(.800)

LOC	DF	DO	P	LTR	REVISIONS
					090CT14 MCM CT
					REVISD PER ECO-14-013212
					U2
					DATE
					DWG
					APVD

A

B

C

D

A

B

C

D

1589483

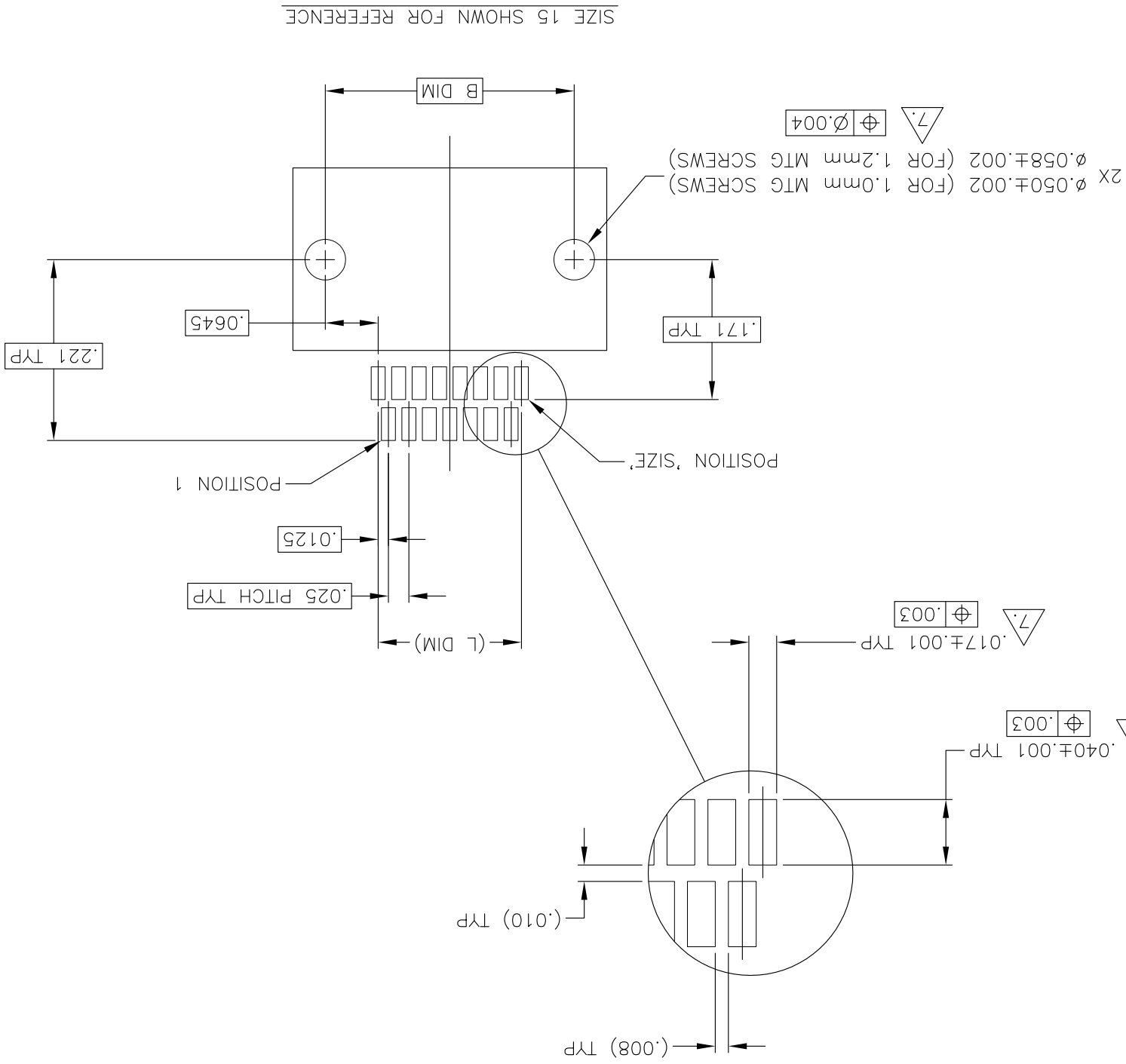


POSITIONAL TOLERANCES FOR BASIC DIMENSIONED FEATURES ARE RELATIVE TO FIDUCIALS OR SOME SIMILAR DATUM REFERENCE DEFINED BY THE PCB DESIGNER.

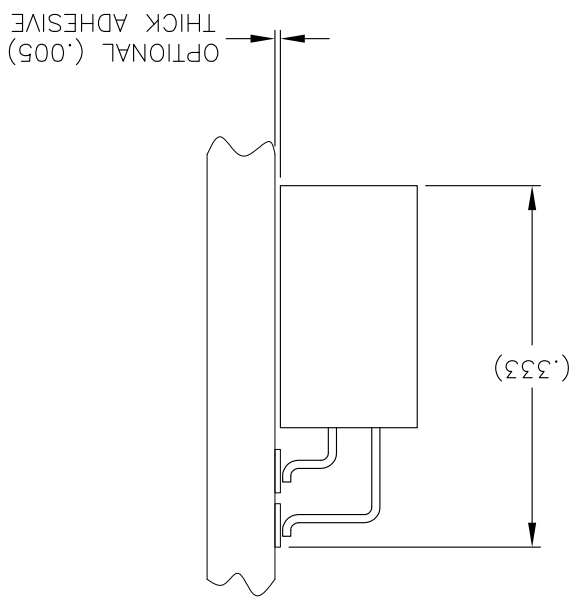
MATERIAL: -		FINISH: -		CUSTOMER DRAWING	
DIMENSIONS: INCHES		TOLERANCES UNLESS OTHERWISE SPECIFIED:		SCALE: 8:1	
0 PLC ±		0 PLC ±		SHEET 2 of 2	
1 PLC ±		1 PLC ±		REV U2	
2 PLC ±		2 PLC ±			
3 PLC ±		3 PLC ±			
4 PLC ±		4 PLC ±			
APPROVALS:		APPROVALS:		APPROVALS:	
DMN M. STORRY 15 FEB 01		CHK S. KAIN 15 FEB 01		APVD -	
NAME: -		PRODUCT SPEC: -		APPLICATION SPEC: -	
RECEPTACLE ASSEMBLY, HORIZONTAL SURFACE		MOUNT, TWO ROW DUAL IN LINE		WEIGHT: -	
RECEPTACLE ASSEMBLY, HORIZONTAL SURFACE		MOUNT, TWO ROW DUAL IN LINE		SIZE: A2	
RECEPTACLE ASSEMBLY, HORIZONTAL SURFACE		MOUNT, TWO ROW DUAL IN LINE		CAGE CODE: 00779	
RECEPTACLE ASSEMBLY, HORIZONTAL SURFACE		MOUNT, TWO ROW DUAL IN LINE		DRAWING NO: 1589483	
RECEPTACLE ASSEMBLY, HORIZONTAL SURFACE		MOUNT, TWO ROW DUAL IN LINE		RESTRICTED TO: -	
RECEPTACLE ASSEMBLY, HORIZONTAL SURFACE		MOUNT, TWO ROW DUAL IN LINE		APVD: -	
RECEPTACLE ASSEMBLY, HORIZONTAL SURFACE		MOUNT, TWO ROW DUAL IN LINE		DATE: -	
RECEPTACLE ASSEMBLY, HORIZONTAL SURFACE		MOUNT, TWO ROW DUAL IN LINE		DESCRIPTION: -	
RECEPTACLE ASSEMBLY, HORIZONTAL SURFACE		MOUNT, TWO ROW DUAL IN LINE		LTR: -	
RECEPTACLE ASSEMBLY, HORIZONTAL SURFACE		MOUNT, TWO ROW DUAL IN LINE		P: -	
RECEPTACLE ASSEMBLY, HORIZONTAL SURFACE		MOUNT, TWO ROW DUAL IN LINE		SEE SHEET 1	
RECEPTACLE ASSEMBLY, HORIZONTAL SURFACE		MOUNT, TWO ROW DUAL IN LINE		DATE: -	
RECEPTACLE ASSEMBLY, HORIZONTAL SURFACE		MOUNT, TWO ROW DUAL IN LINE		DMN: -	
RECEPTACLE ASSEMBLY, HORIZONTAL SURFACE		MOUNT, TWO ROW DUAL IN LINE		APVD: -	

THIS DRAWING IS A CONTROLLED DOCUMENT.

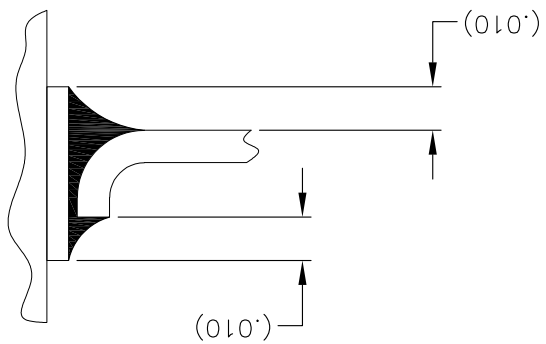
TYPICAL PCB LAYOUT



SIZE 15 SHOWN FOR REFERENCE



TYPICAL FOOT PLACEMENT ON SOLDER PAD



LOC	DF	DO	P	LTR	DATE	DMN	APVD

1589483

## X-ON Electronics

Largest Supplier of Electrical and Electronic Components

*Click to view similar products for [Rectangular MIL Spec Connectors](#) category:*

*Click to view products by [TE Connectivity](#) manufacturer:*

Other Similar products are found below :

[006-1169-16](#) [CSR31343-0001-00000](#) [CSR31346-0001-A0001](#) [CSR31899-0001-00000](#) [CSR31900-0001-A0001](#) [CTJ-3D-05](#) [CTS-S16/16](#)  
[M55302/57A36X](#) [M55302/58-A70Y](#) [65002-062](#) [65008-D08](#) [CY4602-000](#) [732-8020-01](#) [732-8021-02 B](#) [77058-22-55PN](#) [81542-20](#)  
[86.030.0053.0](#) [1241346-1](#) [RM252-020-311-2900](#) [DMC-M 08-16 SNE](#) [1589051-4](#) [BACC65CAMA](#) [BACC65CAMN](#) [BACC65CP1PN](#)  
[BACI10BC1220PN](#) [18023-9](#) [HSB-D4S03DM222X](#) [2217548-1](#) [891-009-15SA2-BRT1T](#) [SIM2S100A](#) [1604996-2](#) [SMD25PN90L-4055](#)  
[1925036-4](#) [220A012-25225-0](#) [22628-10-6P-791](#) [CSR31343-0001-A0001](#) [CSR31899-0001-A0001](#) [CSR31900-0001-00000](#) [33526M11-08PD](#)  
[RE04-212S](#) [CTD160E01F-6148](#) [CTJ112E03B](#) [CTJ122E02D-8000](#) [CTJ-3D-12](#) [CTJ920E06N-513](#) [CTJ920E12N-513](#) [CTL-16-090](#) [CTR06-](#)  
[5100SY](#) [M55302/63A20H](#) [M55302/66-30H](#)