

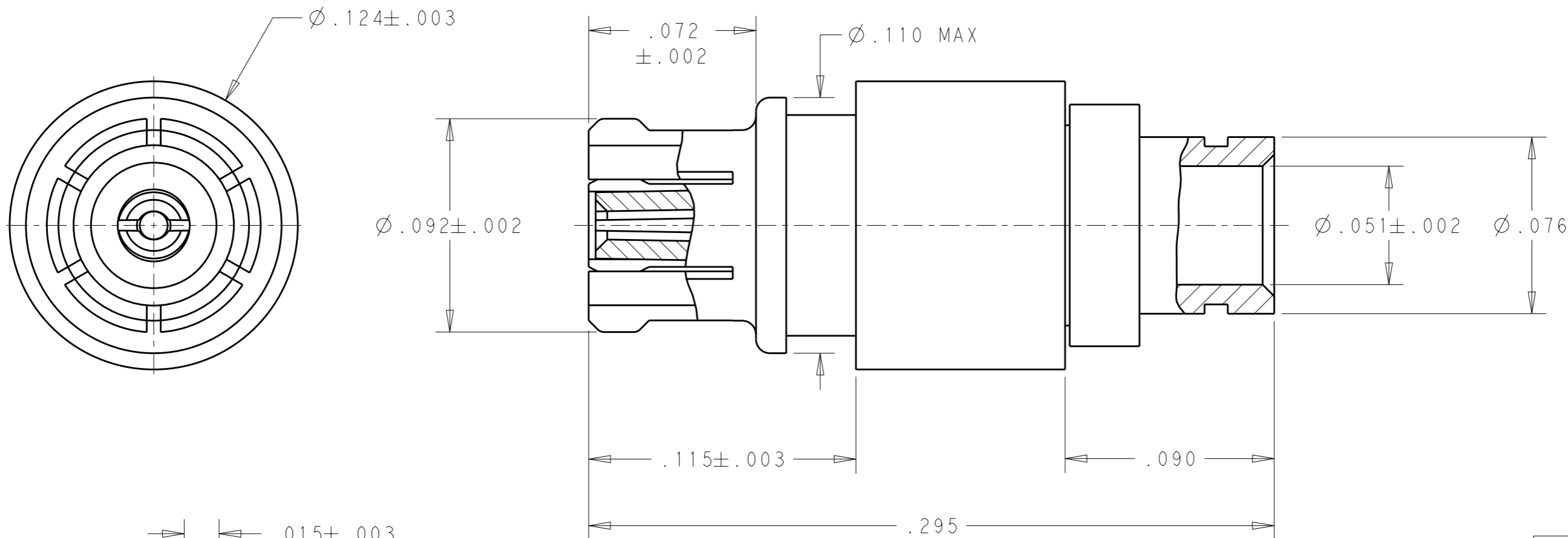
THIS DRAWING IS UNPUBLISHED.

RELEASED FOR PUBLICATION

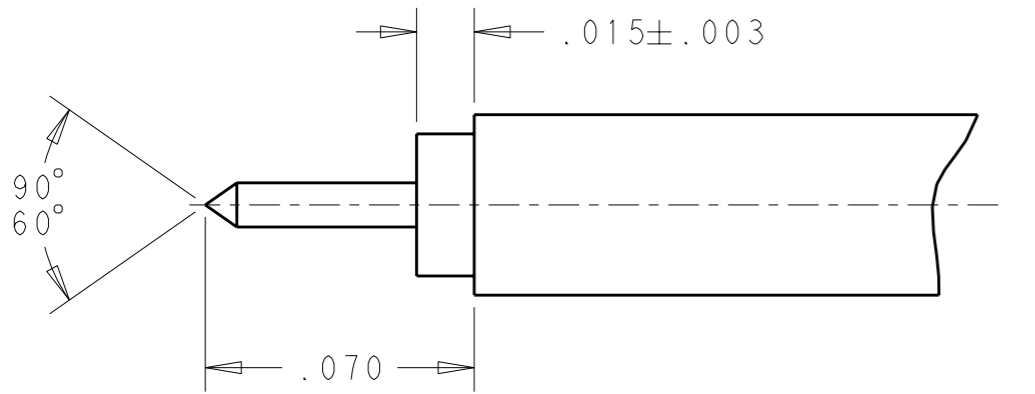
© COPYRIGHT - BY - ALL RIGHTS RESERVED.

LOC	DIST	REVISIONS				
P	LTR	DESCRIPTION	DATE	DWN	APVD	
-	-	A	RELEASED PER ECO 11-009364	5-9-11	BM	BM


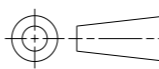
- 1 MATERIALS:  
 BODY: BERYLLIUM COPPER PER ASTM B 196  
 CONTACT: BERYLLIUM COPPER PER ASTM B 196  
 DIELECTRIC: TEFLON PER ASTM D 1710
- 2 FINISHES:  
 BODY: .000050 MIN GOLD PLATE PER MIL-G-45204  
 CONTACT: .000050 MIN GOLD PLATE PER MIL-G-45204
- 3. FOR USE WITH .047 DIAMETER SEMI-RIGID CABLE
- 4. SMPM FEMALE INTERFACE PER MIL-STD-348A, FIGURE 328-1



1757642-1  
 PART NUMBER



**RECOMMENDED CABLE STRIP LENGTHS**

THIS DRAWING IS A CONTROLLED DOCUMENT.		DWN B. MOYER 02MAY2006	 TE Connectivity				
DIMENSIONS: INCHES		CHK C. THOMAS 05MAY2006					
		APVD B. MOYER 05MAY2006					
TOLERANCES UNLESS OTHERWISE SPECIFIED:		PRODUCT SPEC 108-2326	NAME SMPM, FEMALE, CABLE JACK, STRAIGHT				
0 PLC ±- 1 PLC ±- 2 PLC ±.01 3 PLC ±.005 4 PLC ±- ANGLES ±2°		APPLICATION SPEC -	SIZE A3	CAGE CODE 00779	DRAWING NO C-1757642	RESTRICTED TO -	
MATERIAL 1	FINISH 2	WEIGHT -	CUSTOMER DRAWING		SCALE 1:1	SHEET 1 OF 1	REV A

## X-ON Electronics

Largest Supplier of Electrical and Electronic Components

*Click to view similar products for [RF Connectors](#) / [Coaxial Connectors](#) category:*

*Click to view products by [TE Connectivity](#) manufacturer:*

Other Similar products are found below :

[R125315120](#) [8915-1511-000](#) [89674-0827](#) [5916-1103-603](#) [0106-001-000](#) [6-0001-3](#) [6001-7071-019](#) [6002-7051-003](#) [6002-7551-202](#) [6059674-1](#) [619550-1](#) [630059-000](#) [M39012/25-0021](#) [M39012/79-3008](#) [M39030/3-01N](#) [M39030/3-03N](#) [M3933/25-36N](#) [6500-7071-046](#) [6501-1071-002](#) [M83723/72W2457N](#) [6769](#) [CX050L2AQ](#) [7002-1541-010](#) [7002-1572-002](#) [7003-1572-002](#) [7004-1512-000](#) [7009-1511-004](#) [7010-1511-000](#) [7029-1511-060](#) [7101-1541-010](#) [7101-1571-002](#) [7105-1521-002](#) [7145-1521-002](#) [7209-1511-011](#) [7210-1511-012](#) [7210-1511-015](#) [7210-1511-019](#) [7210-1511-040](#) [7225-1512-050](#) [7242-1511-000](#) [73137-5015](#) [73251-0111](#) [73251-0672](#) [73276-1501](#) [73366-0013](#) [73404-2300](#) [73413-6080](#) [73415-5721](#) [7405-1521-005](#) [7405-1521-802](#)