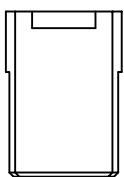
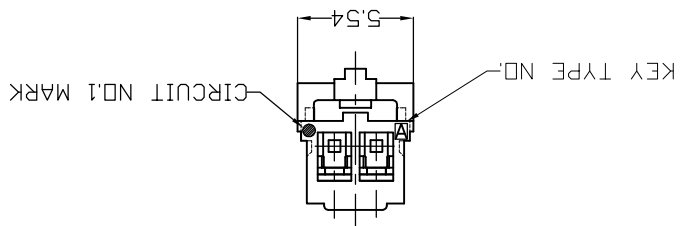
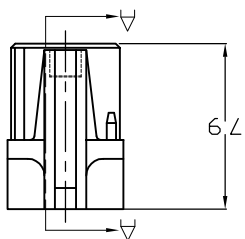
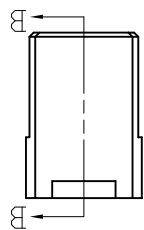
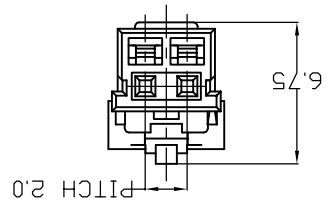


CUSTOMER DRAWING		SCALE: 4:1	SHEET: 1 of 3	REV: E1
MATERIAL: SEE NOTE		FINISH: 0 PLG ±0.05, 1 PLG ±0.05, 2 PLG ±0.05, 3 PLG ±0.05, 4 PLG ±0.05		
DIMENSIONS: mm		TOLERANCES UNLESS OTHERWISE SPECIFIED		
DWN: 11JUN2008		CHK: Liu Jimmy		
APVD: Wu happye		11JUN2008		
NAME: Zhou Jiliang		11JUN2008		
PRODUCT SPEC: 108-106001		APPLICATION SPEC: 114-5425		
SIZE: A2		CAGE CODE: 00779		
DRAWING NO: 1971030		RESTRICTED TO: -		

Grace Inertia Connector 2.0 EV Series
Plug Housing

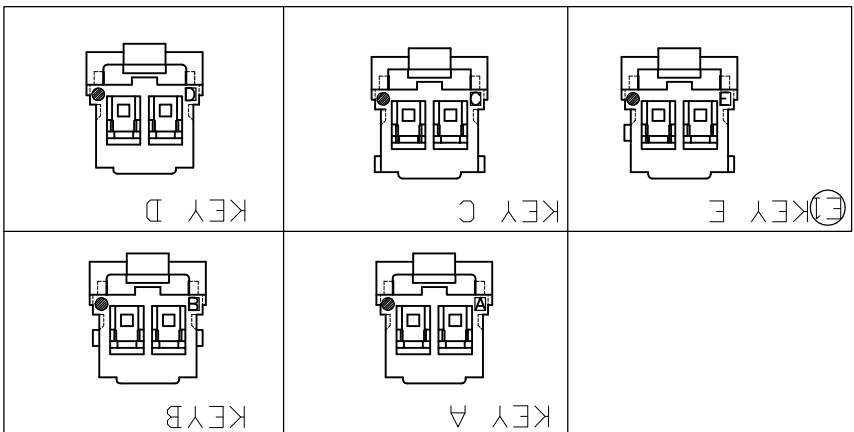
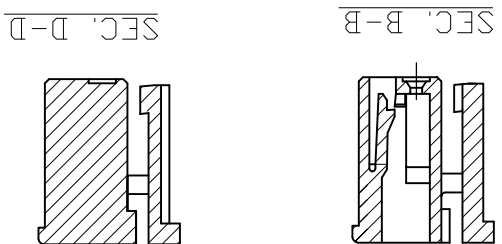
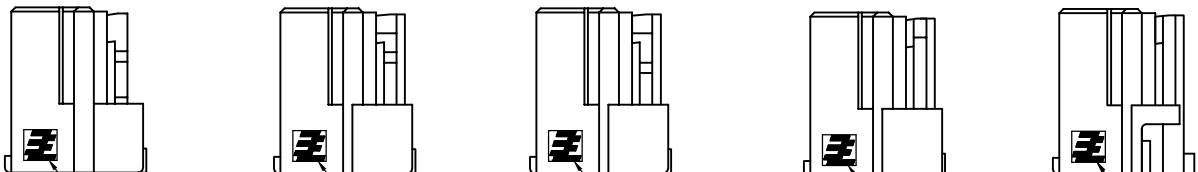


TE Connectivity



(2 POS.)

(2 POS.) (3~4 POS.) (5 POS.) (6~8 POS.) (9~10 POS.)



- NOTE:
1. GENERAL TOLERANCE: ±0.3, ±3°
 2. MATERIAL: 66NYLON GF(UL94V-0)
 3. MATING CONN. P/N: SEE TABLE
 4. APPLICABLE CONTACT P/N: 1971031-1

REVISIONS	DATE	APVD	P	LTR	DESCRIPTION
1	08SEP2017	M.G.D.Z	E1		EGR-17-013211

A

B

C

D

1

2

3

4

1971030

CUSTOMER DRAWING		SCALE 4:1		SHEET 2 of 3		REV E1	
RESTRICTED TO		CAGE CODE		DRAWING NO		1971030	
SIZE		A2		00779		1971030	
APPLICATION SPEC		114-5425		108-106001		Grace Inertia Connector 2.0 EV Series Plug Housing	
PRODUCT SPEC		Zhou Jiliang		11JUN2008		APVD	
NAME		Wu Haiye		11JUN2008		CHK	
DWN		Liu Jimmy		11JUN2008		TE Connectivity	

THIS DRAWING IS A CONTROLLED DOCUMENT.

DIMENSIONS: mm

TOLERANCES UNLESS OTHERWISE SPECIFIED

0 PLG	±
1 PLG	±
2 PLG	±
3 PLG	±
4 PLG	±

MATERIAL: -

A

A

B

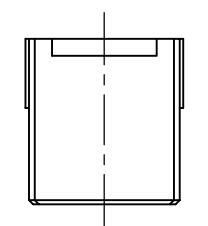
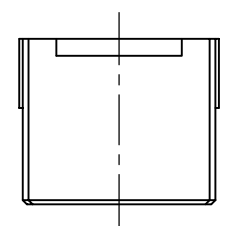
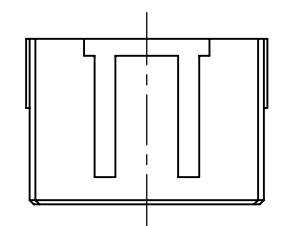
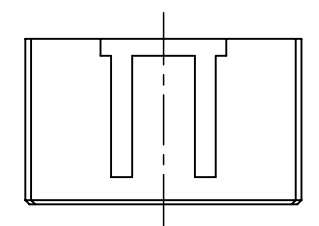
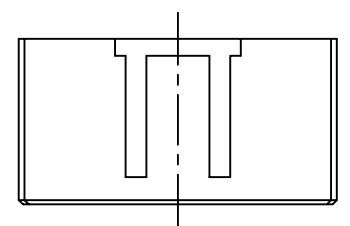
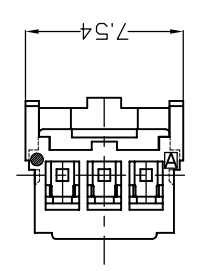
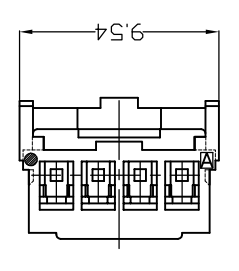
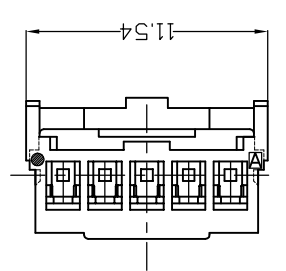
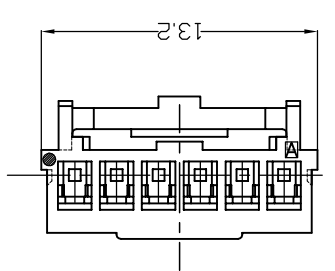
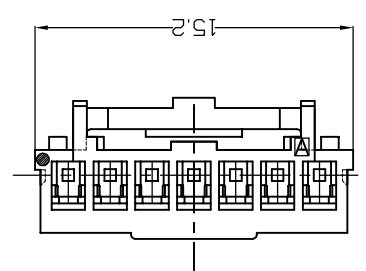
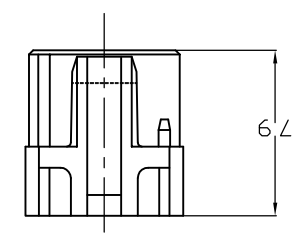
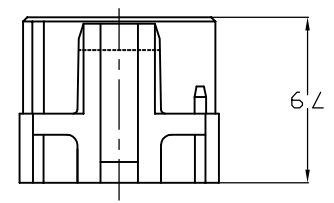
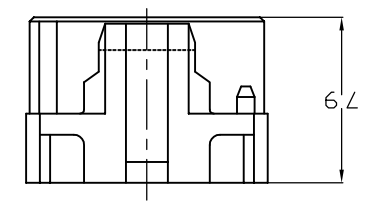
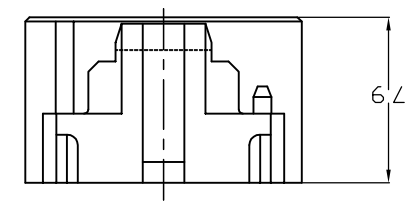
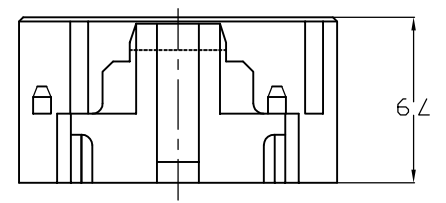
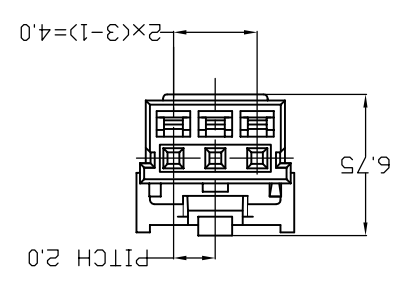
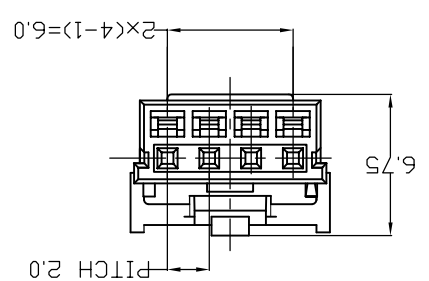
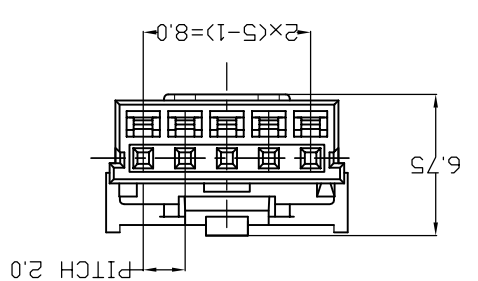
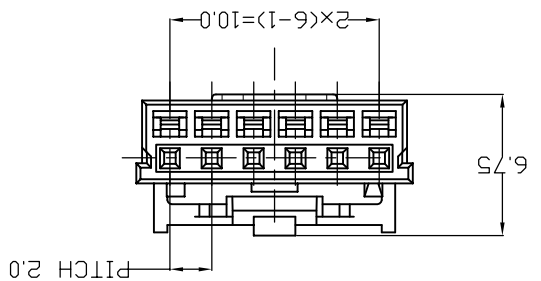
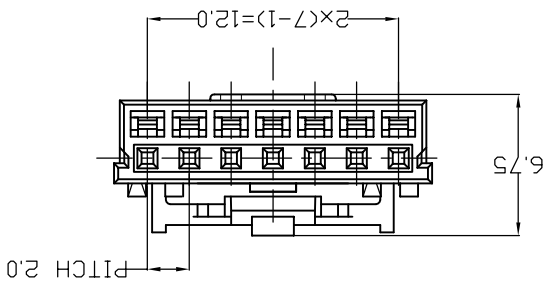
B

C

C

D

D



(7 POS.)

(6 POS.)

(5 POS.)

(4 POS.)

(3 POS.)

REV	DATE	DESCRIPTION	DWN	APVD
-	-	SEE SHEET 1	-	-

1

2

3

4

THIS DRAWING IS UNPUBLISHED. RELEASED FOR PUBLICATION. ALL RIGHTS RESERVED.

TE Connectivity - COPYRIGHT -

THIS DRAWING IS A CONTROLLED DOCUMENT.

11JUN2008
CHK Liu Jimmy
11JUN2008
WU Sam
11JUN2008
APVD Zhou Jiliang

TE Connectivity

Grace Inertia Connector 2.0 EV Series
Plug Housing

108-106001
PRODUCT SPEC
Zhou Jiliang
108-106001
APPLICATION SPEC
114-5425
WEIGHT

0 PLC
1 PLC
2 PLC
3 PLC
4 PLCS
FINISH

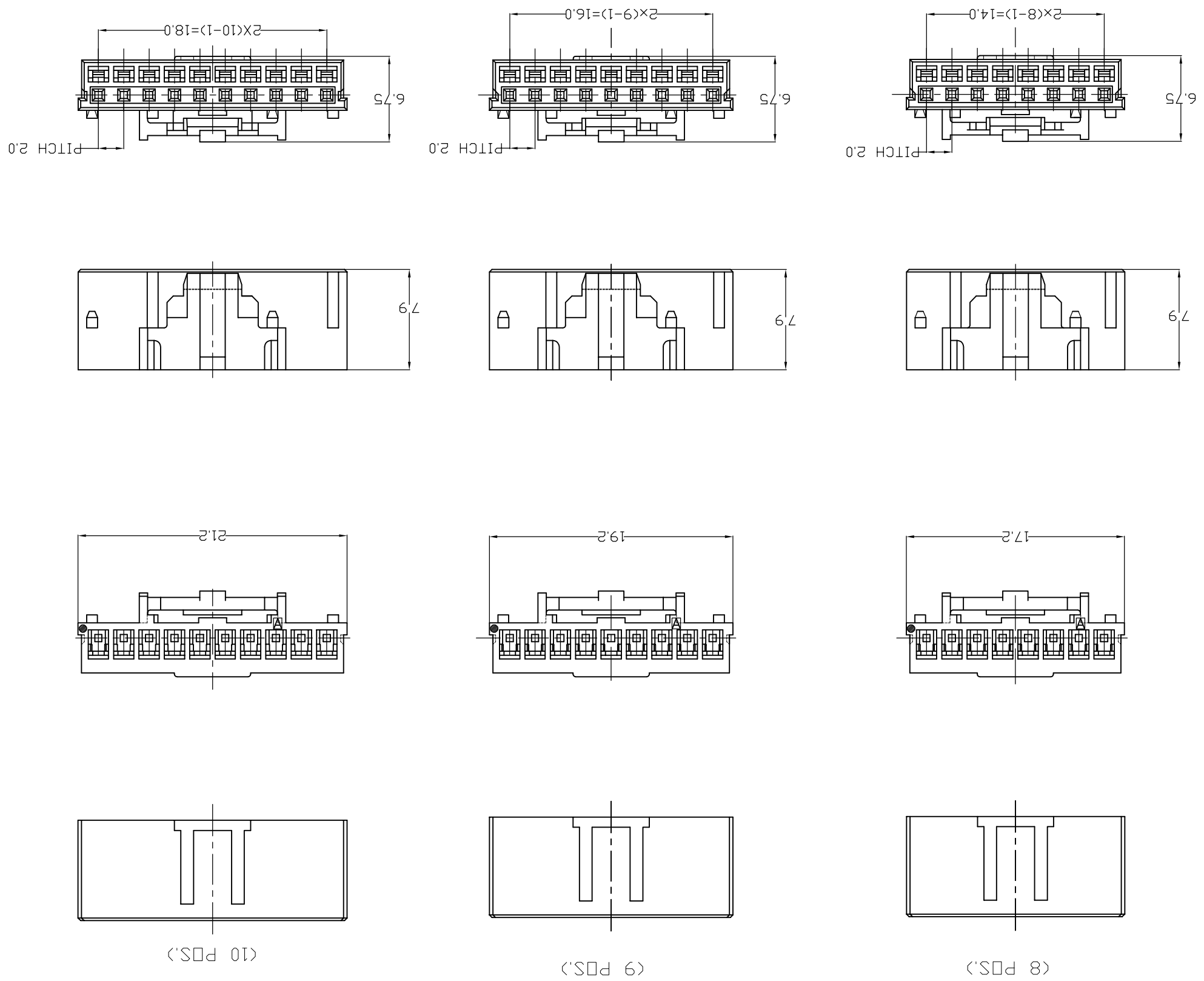
MATERIAL
DIMENSIONS:
mm
TOLERANCES UNLESS OTHERWISE SPECIFIED

SEE NOTE

CUSTOMER DRAWING

SCALE 4:1
SHEET 3 of 3
REV E1

PART NUMBER	KEY TYPE	COLOR	POS	MATING CONNECTOR
1971030-2	A	NATURAL	2	1971032-2
1-1971030-2	B	RED		1-1971032-2
2-1971030-2	C	BLUE		2-1971032-2
3-1971030-2	D	YELLOW		3-1971032-2
4-1971030-2	E	BLACK		4-1971032-2
1971030-3	A	NATURAL	3	1971032-3
1-1971030-3	B	RED		1-1971032-3
2-1971030-3	C	BLUE		2-1971032-3
3-1971030-3	D	YELLOW		3-1971032-3
1971030-4	A	NATURAL	4	1971032-4
1-1971030-4	B	RED		1-1971032-4
2-1971030-4	C	BLUE		2-1971032-4
3-1971030-4	D	YELLOW		3-1971032-4
1971030-5	A	NATURAL	5	1971032-5
1-1971030-5	B	RED		1-1971032-5
2-1971030-5	C	BLUE		2-1971032-5
3-1971030-5	D	YELLOW		3-1971032-5
4-1971030-5	E	BLACK		4-1971032-5
1971030-6	A	NATURAL	6	1971032-6
1-1971030-6	B	RED		1-1971032-6
2-1971030-6	C	BLUE		2-1971032-6
3-1971030-6	D	YELLOW		3-1971032-6
3-1971030-6	D	YELLOW		3-1971032-6
1971030-7	A	NATURAL	7	1971032-7
1-1971030-7	B	RED		1-1971032-7
2-1971030-7	C	BLUE		2-1971032-7
3-1971030-7	D	YELLOW		3-1971032-7
1971030-8	A	NATURAL	8	1971032-8
1-1971030-8	B	RED		1-1971032-8
2-1971030-8	C	BLUE		2-1971032-8
3-1971030-8	D	YELLOW		3-1971032-8
1971030-9	A	NATURAL	9	1971032-9
1-1971030-9	B	RED		1-1971032-9
2-1971030-9	C	BLUE		2-1971032-9
3-1971030-9	D	YELLOW		3-1971032-9
1971030-1	A	NATURAL	10	1971032-1
1-1971030-1	B	RED		1-1971032-1
2-1971030-1	C	BLUE		2-1971032-1
3-1971030-1	D	YELLOW		3-1971032-1



REV	DATE	DESCRIPTION	APVD
-	-	SEE SHEET 1	-

THIS DRAWING IS UNPUBLISHED. RELEASED FOR PUBLICATION. ALL RIGHTS RESERVED.

TE Connectivity - COPYRIGHT - THIS DRAWING IS UNPUBLISHED. ALL RIGHTS RESERVED.

X-ON Electronics

Largest Supplier of Electrical and Electronic Components

Click to view similar products for [Headers & Wire Housings](#) category:

Click to view products by [TE Connectivity](#) manufacturer:

Other Similar products are found below :

[95000-104TRLF](#) [10135584-644402LF](#) [DF62W-EP2022PCA](#) [95000-106TRLF](#) [DF62W-2022SCA](#) [DF62W-EP2022PC](#) [2203348](#) [DF62W-2022SC](#) [1084018](#) [1029039](#) [1084017](#) [802-10-012-10-002000](#) [1112640](#) [1112639](#) [000-34000](#) [0009482033](#) [0009507031](#) [57102-S06-03LF](#) [57202-S52-04LF](#) [PCN6-15S-2.5E](#) [0039019024](#) [58102-G61-06LF](#) [582553-1](#) [0009485154](#) [0009508121](#) [0022285053](#) [0050291907](#) [018731A](#) [LY20-4P-DT1-P1E-BR](#) [02.125.8002.8](#) [60101931](#) [60598-1 \(Cut Strip\)](#) [M1625-3R/100](#) [61062-3](#) [61082-181009](#) [636-1427](#) [638009-1](#) [641938-9](#) [641991-4](#) [644168-1](#) [647662-1](#) [65039-019ELF](#) [65817-002LF](#) [65817-015LF](#) [65863-015LF](#) [66207-023LF](#) [67016-026LF](#) [67046-001LF](#) [67095-007LF](#) [67230-005LF](#)