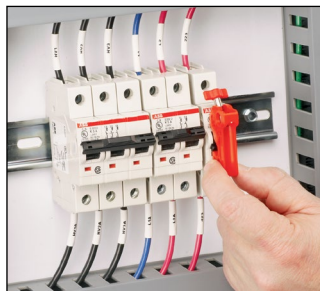


Circuit Breaker Lockout System

OSHA (Occupational Safety and Health Administration) mandates that all energy sources be turned off and locked out to protect employees from injuries caused by the accidental startup of equipment under repair and service. To support compliance with OSHA 1910.147, Panduit offers a complete line of high quality, circuit breaker lockout devices to ensure that electrical energy sources are isolated for optimal work place safety. These circuit breaker lockouts are part of an extensive line of innovative safety devices designed by Panduit to protect employees from risks associated with all forms of hazardous energy, while meeting safety and regulatory requirements.



PowerLOK™ Circuit Breaker Lockout Device



Miniature Circuit Breaker Lockout Device



“No Tool” Circuit Breaker Lockout Device



Large Handle Circuit Breaker Lockout Device

Key Features

Benefits

Complete circuit breaker lockout offering	One supplier for all circuit breaker lockout needs to deliver optimal workplace safety
Unique “no tool” option	Allows circuit breaker to lock in the off position without the use of a tool to provide a quick and easy installation
Industry-leading clamping force	Prevents the breaker from being turned back on for safe performance of maintenance or service
Universal design	Accommodates single pole and multiple pole breakers to efficiently lockout most circuit breakers in the facility
Rugged nylon and stainless steel construction	Provides strength, durability, added security, and corrosion resistance; ideal for industrial and harsh applications
Compact and lightweight	Convenient, easy to transport and store in a small lockout kit

Circuit Breaker Lockout System

PowerLOK™ Circuit Breaker Lockout Devices

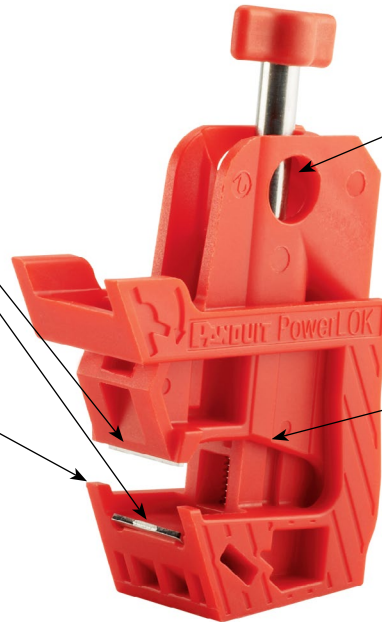
Panduit's PowerLOK™ Circuit Breaker Lockout Devices include many innovative features to provide a versatile, easy to use lockout/tagout device. These devices can be applied to single or multi-pole circuit breakers (such as 120/277V breakers) to prevent the breaker from being turned back on; for safe performance of maintenance or service in accordance with lockout/tagout procedures.

Two Metal Contacts

Provide a contact area that is evenly distributed on the breaker handle for a secure and reliable connection without damage to the breaker handle itself

Fits Single and Multi-Pole Circuit Breakers

Jaws designed to grasp the tie-bar of two and three pole circuit breakers, allowing one part to be used in multiple applications



Two-Position Padlock Design

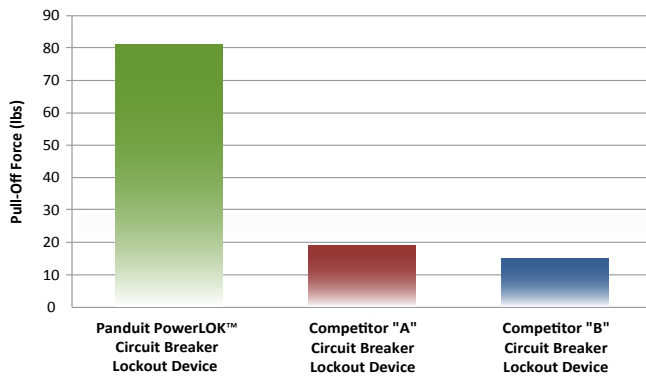
Allows padlock to be installed horizontally or vertically to accommodate space

Two-Piece Construction

Delivers outstanding clamping force, to assure the circuit breaker will remain locked out once the device is applied for improved reliability and safety

PowerLOK™ Circuit Breaker Lockout Devices Deliver Industry-Leading Clamping Force

Circuit Breaker Lockout Device Pull-Off Force Testing



The PowerLOK™ Circuit Breaker Lockout Devices are designed for superior engagement with the circuit breaker to deliver industry-leading pull-off resistance performance. The two-piece construction, metal contacts, and jaws that encircle the circuit breaker handle create superior clamping force for a reliable and secure connection. Pull-off force test results indicate the Panduit® PowerLOK™ devices deliver over 3X the pull-off resistance when compared to competitor products used in the same application.

Test results based on pull-off force of each device when force applied perpendicular to the circuit breaker. For more information on the test contact Panduit at: safety@panduit.com.

PowerLOK™ Circuit Breaker Lockout Devices – Ordering Information



Part Number	Part Description	Std. Pkg. Qty.	Std. Ctn. Qty.
PSL-PCB	PowerLOK™ Circuit Breaker Lockout.	1	10
PSL-PCB-V	PowerLOK™ Circuit Breaker Lockout, 5-pack.	5	25
PSL-PCBNT	PowerLOK™ "No Tool" Circuit Breaker Lockout.	1	10
PSL-PCBNT-V	PowerLOK™ "No Tool" Circuit Breaker Lockout, 5-pack.	5	25

Circuit Breaker Lockout System and Electrician Lockout Kit

Miniature Circuit Breaker Lockout Devices



PSL-MCB



PSL-MCBNT

- Quickly locks out miniature circuit breakers commonly used in industrial automation and motor control
- On the PSL-MCBNT, multiple padlock orientations allow adjacent circuit breakers to be locked out individually
- PSL-MCB can be installed using a screwdriver
- PSL-MCBNT can be installed by hand with no tool required

Part Number	Part Description	Std. Pkg. Qty.	Std. Ctn. Qty.
PSL-MCB	Universal miniature circuit breaker lockout.	1	10
PSL-MCB-V	Universal miniature circuit breaker lockout.	5	25
PSL-MCBNT	"No Tool" miniature circuit breaker lockout.	1	10
PSL-MCBNT-V	"No Tool" miniature circuit breaker lockout.	5	25

Universal and I-LINE[^] Circuit Breaker Lockout Devices



PSL-CBNT



PSL-CBILNT

- Quickly locks out circuit breakers (such as 120/277V breakers); ideal for industrial and harsh applications
- PSL-CB and PSL-CBIL can be installed using a screwdriver
- PSL-CBNT and PSL-CBILNT can be installed by hand, with no tool required

Part Number	Part Description	Std. Pkg. Qty.	Std. Ctn. Qty.
PSL-CB	Universal circuit breaker lockout.	1	10
PSL-CB-V	Universal circuit breaker lockout, 5-pack.	5	25
PSL-CBNT	"No Tool" universal circuit breaker lockout.	1	10
PSL-CBNT-V	"No Tool" universal circuit breaker lockout, 5-pack.	5	25
PSL-CBIL	Circuit breaker lockout device for use with Square D I-LINE [^] /Federal Pacific (FPE) circuit breakers.	1	10
PSL-CBILNT	"No Tool" circuit breaker lockout for use with Square D I-LINE [^] /Federal Pacific (FPE) circuit breakers.	1	10

[^]I-LINE is a registered trademark of Square D Company.

Large Handle Circuit Breaker Lockout Device



PSL-CBL

- Quickly locks out large molded-case circuit breakers (such as 480/600V breakers)
- Can be installed by hand, with no tool required

Part Number	Part Description	Std. Pkg. Qty.	Std. Ctn. Qty.
PSL-CBL	Large handle circuit breaker lockout.	1	10
PSL-CBL-V	Large handle circuit breaker lockout.	5	25

Electrician Lockout Kit

Electrician Lockout Kit



PSL-PK-EAP

Part Number	Part Description	Std. Pkg. Qty.
PSL-PK-EAP	(1) Screwdriver, (1) PSL-PK pouch, (1) PSL-8 red non-conductive lockout padlock, (1) PSL-MLD multiple lockout device, (1) PSL-WS wall switch lockout device, (1) PSL-PCBNT PowerLOK™ "No Tool" Circuit Breaker lockout device, (1) PSL-P plug lockout device, (5) PVT-30 electrician's blocking tags.	1
PSL-PK-EA	(1) Screwdriver, (1) PSL-PK pouch, (1) PSL-8 red non-conductive lockout padlock, (1) PSL-MLD multiple lockout device, (1) PSL-WS wall switch lockout device, (1) PSL-CBNT "No Tool" Circuit Breaker lockout device, (1) PSL-P plug lockout device, (5) PVT-30 electrician's blocking tags.	1
PSL-PK-EA-S	(1) Screwdriver, (1) PSL-PK pouch, (1) PSL-8 red non-conductive lockout padlock, (1) PSL-MLD multiple lockout device, (1) PSL-WS wall switch lockout device, (1) PSL-CBNT "No Tool" Circuit Breaker lockout device, (1) PSL-P plug lockout device, (5) PVT-30-S electrician's blocking tags, printed in Spanish.	1

Lockout Kits

Contractor Lockout Kit



PSL-KT-CONAP

Part Number	Part Description	Std. Pkg. Qty.
PSL-KT-CONAP	(1) Screwdriver, (1) PSL-KT carrying case – 5.00" x 3.50" x 11.00" (127.0mm x 88.9mm x 279.4mm), (6) PSL-8 red non-conductive lockout padlocks, (1) PSL-1A lockout hasp – 1.00" (25.4mm) jaw diameter, (1) PSL-MLD multiple lockout device, (3) PSL-WS wall switch lockouts, (3) PSL-PCBNT PowerLOK™ "No Tool" Circuit Breaker lockout device, (3) PSL-P plug lockouts, (15 Tags) PVT-98 "EQUIPMENT LOCKED OUT BY..." safety tags.	1
PSL-KT-CONA	(1) Screwdriver, (1) PSL-KT carrying case – 5.00" x 3.50" x 11.00" (127.0mm x 88.9mm x 279.4mm), (6) PSL-8 red non-conductive lockout padlocks, (1) PSL-1A lockout hasp – 1.00" (25.4mm) jaw diameter, (1) PSL-MLD multiple lockout device, (3) PSL-WS wall switch lockouts, (3) PSL-CBNT "No Tool" Circuit Breaker lockout device, (3) PSL-P plug lockouts, (15 Tags) PVT-98 "EQUIPMENT LOCKED OUT BY..." safety tags.	1
PSL-KT-CONA-S	(1) Screwdriver, (1) PSL-KT carrying case – 5.00" x 3.50" x 11.00" (127.0mm x 88.9mm x 279.4mm), (6) PSL-8 red non-conductive lockout padlocks, (1) PSL-1A lockout hasp – 1.00" (25.4mm) jaw diameter, (1) PSL-MLD multiple lockout device, (3) PSL-WS wall switch lockouts, (3) PSL-CBNT "No Tool" Circuit Breaker lockout device, (3) PSL-P plug lockouts, (15 Tags) PVT-98-S "EQUIPMENT LOCKED OUT BY..." safety tags, printed in Spanish.	1

Maintenance Lockout Kit



PSL-KT-MROAP

Part Number	Part Description	Std. Pkg. Qty.
PSL-KT-MROAP	(1) Screwdriver, (1) PSL-BX carrying case – 6.50" x 5.00" x 14.50" (165.1mm x 127.0mm x 368.3mm), (3) PSL-8 red non-conductive lockout padlocks, (1) PSL-MLD multiple lockout device, (2) PSL-WS wall switch lockouts, (2) PSL-PCBNT PowerLOK™ "No Tool" Circuit Breaker lockout device, (2) PSL-P plug lockouts, (1) PSL-V6A gate valve lockout – 6.50" (165.1mm), (1) PSL-V2A gate valve lockout – 2.50" (63.5mm), (1) PSL-BV2 ball valve lockout – 3.00" (76.2mm), (1) PSL-CL110 110V plug lockout, (10) PVT-44 "DO NOT OPERATE" maintenance tags.	1
PSL-KT-MROA	(1) Screwdriver, (1) PSL-BX carrying case – 6.50" x 5.00" x 14.50" (165.1mm x 127.0mm x 368.3mm), (3) PSL-8 red non-conductive lockout padlocks, (1) PSL-MLD multiple lockout device, (2) PSL-WS wall switch lockouts, (2) PSL-CBNT "No Tool" Circuit Breaker lockout device, (2) PSL-P plug lockouts, (1) PSL-V6A gate valve lockout – 6.50" (165.1mm), (1) PSL-V2A gate valve lockout – 2.50" (63.5mm), (1) PSL-BV2 ball valve lockout – 3.00" (76.2mm), (1) PSL-CL110 110V plug lockout, (10) PVT-44 "DO NOT OPERATE" maintenance tags.	1
PSL-KT-MROA-S	(1) Screwdriver, (1) PSL-BX carrying case – 6.50" x 5.00" x 14.50" (165.1mm x 127.0mm x 368.3mm), (3) PSL-8 red non-conductive lockout padlocks, (1) PSL-MLD multiple lockout device, (2) PSL-WS wall switch lockouts, (2) PSL-CBNT "No Tool" Circuit Breaker lockout device, (2) PSL-P plug lockouts, (1) PSL-V6A gate valve lockout – 6.50" (165.1mm), (1) PSL-V2A gate valve lockout – 2.50" (63.5mm), (1) PSL-BV2 ball valve lockout – 3.00" (76.2mm), (1) PSL-CL110 110V plug lockout, (10) PVT-44-S "DO NOT OPERATE" maintenance tags, printed in Spanish.	1

Power and Panel Distribution Lockout Kit



PSL-KT-PWRP

Part Number	Part Description	Std. Pkg. Qty.
PSL-KT-PWRP	(1) Screwdriver, (1) PSL-STATION metal wall mount cabinet, (2) PSL-8 red non-conductive lockout padlocks, (1) PSL-MLD multiple lockout device, (2) PSL-PCBNT PowerLOK™ "No Tool" circuit breaker lockout device, (2) PSL-CBILNT circuit breaker lockout device for Square D I-LINE [®] /Federal Pacific (FPE) circuit breakers, (2) PSL-CBL large handle circuit breaker lockout devices, (1) PSL-P plug lockout, (25) PVT-23-Q "DO NOT OPERATE ELECTRICIANS AT WORK" tags.	1
PSL-KT-PWR	(1) Screwdriver, (1) PSL-STATION metal wall mount cabinet, (2) PSL-8 red non-conductive lockout padlocks, (1) PSL-MLD multiple lockout device, (2) PSL-CBNT "No Tool" circuit breaker lockout device, (2) PSL-CBILNT circuit breaker lockout device for Square D I-LINE [®] /Federal Pacific (FPE) circuit breakers, (2) PSL-CBL large handle circuit breaker lockout devices, (1) PSL-P plug lockout, (25) PVT-23-Q "DO NOT OPERATE ELECTRICIANS AT WORK" tags.	1
PSL-KT-PWR-S	(1) Screwdriver, (1) PSL-STATION metal wall mount cabinet, (2) PSL-8 red non-conductive lockout padlocks, (1) PSL-MLD multiple lockout device, (2) PSL-CBNT "No Tool" circuit breaker lockout device, (2) PSL-CBILNT circuit breaker lockout device for Square D I-LINE [®] /Federal Pacific (FPE) circuit breakers, (2) PSL-CBL large handle circuit breaker lockout devices, (1) PSL-P plug lockout, (25) PVT-23-Q-S "DO NOT OPERATE ELECTRICIANS AT WORK" tags, printed in Spanish.	1

[®]I-Line is a registered trademark of Square D Company.

WORLDWIDE SUBSIDIARIES AND SALES OFFICES

PANDUIT CANADA
Markham, Ontario
cs-cdn@panduit.com
Phone: 800.777.3300

PANDUIT EUROPE LTD.
London, UK
cs-emea@panduit.com
Phone: 44.20.8601.7200

PANDUIT SINGAPORE PTE. LTD.
Republic of Singapore
cs-ap@panduit.com
Phone: 65.6305.7575

PANDUIT JAPAN
Tokyo, Japan
cs-japan@panduit.com
Phone: 81.3.6863.6000

PANDUIT LATIN AMERICA
Guadalajara, Mexico
cs-la@panduit.com
Phone: 52.33.3777.6000

PANDUIT AUSTRALIA PTY. LTD.
Victoria, Australia
cs-aus@panduit.com
Phone: 61.3.9794.9020

For a copy of Panduit product warranties, log on to www.panduit.com/warranty

For more information

Visit us at www.panduit.com

Contact Customer Service by email: cs@panduit.com
or by phone: 800.777.3300

©2016 Panduit Corp.
ALL RIGHTS RESERVED.
Printed in the U.S.A.
IDCB78--SA-ENG
Replaces IDCB75
3/2016

X-ON Electronics

Largest Supplier of Electrical and Electronic Components

Click to view similar products for [PPE Safety Equipment / Lockout Tagout](#) category:

Click to view products by [Panduit](#) manufacturer:

Other Similar products are found below :

[S-920S](#) [GPSL-7KAMK](#) [GPSL-6LSKA](#) [GPSL-6MK](#) [GPSL-7LSKA](#) [GPSL-7MK](#) [GPSL-8MK](#) [50585](#) [GPSL-8MK-E](#) [740053624](#) [GPSL-12MK](#) [GPSL-8KAMK-P](#) [GPSL-13AKA](#) [GPSL-13BKA](#) [GPSL-16AKA](#) [GPSL-13CKA](#) [GPSL-16BKA](#) [GPSL-13DKA](#) [GPSL-13D-LSKA](#) [GPSL-16CKA](#) [GPSL-16C-LSKA](#) [GPSL-16DKA](#) [GPSL-6ABUKA](#) [GPSL-14ABLKA](#) [GPSL-13EKA](#) [GPSL-6ABU-LSKA](#) [GPSL-6BUKA](#) [GPSL-16EKA](#) [GPSL-14BYLKA](#) [GPSL-14BYL-LSKA](#) [GPSL-6CBUKA](#) [GPSL-6BU-LSKA](#) [GPSL-6ABUMK](#) [GPSL-6CBU-LSKA](#) [GPSL-15ABUKA](#) [GPSL-6BUMK](#) [GPSL-6DBUKA](#) [GPSL-17BBLKA](#) [GPSL-16FKA](#) [GPSL-6CBUMK](#) [GPSL-6BU-LSMK](#) [GPSL-6DBU-LSKA](#) [GPSL-6CBU-LSMK](#) [GPSL-15ABUMK](#) [GPSL-15ABU-LSKA](#) [GPSL-6DBUMK](#) [GPSL-15BBUKA](#) [GPSL-15ABU-LSMK](#) [GPSL-15BBUMK](#)
[PSL-20SA-S](#)