

# Air Combination Series AC Options/Attachments

## Options/Attachments Part No.

Section	Model		Part no.									
			For AC10	For AC20	For AC25	For AC30	For AC40	For AC40-06	For AC50	For AC55	For AC60	
			For AC10A	For AC20A	—	For AC30A	For AC40A	For AC40A-06	For AC50A	—	For AC60A	
Type	Type	For AC10B	For AC20B	For AC25B	For AC30B	For AC40B	For AC40B-06	For AC50B	For AC55B	For AC60B		
		—	For AC20C	For AC25C	For AC30C	For AC40C	For AC40C-06	—	—	—		
		—	For AC20D	—	For AC30D	For AC40D	For AC40D-06	—	—	—		
Option	Round type (Note 1)	Standard	G27-10-R1	G36-10-□01			G46-10-□02					
		0.02 to 0.2 MPa setting	G27-10-R1 (Note 3)	G36-2-□01			G46-2-□02					
	Round type (with color zone)	Standard	—	G36-10-□01-L			G46-10-□02-L					
		0.02 to 0.2 MPa setting	—	G36-2-□01-L			G46-2-□02-L					
	Square embedded type (Note 2)	Standard	—	GC3-10AS [GC3P-010AS (Pressure gauge cover only)]								
		0.02 to 0.2 MPa setting	—	GC3-2AS [GC3P-010AS (Pressure gauge cover only)]								
	Digital pressure switch	NPN output/Wiring bottom entry	—	ISE35-N-25-MLA [ISE35-N-25-M (Switch body only)] (Note 4)								
		NPN output/Wiring top entry	—	ISE35-R-25-MLA [ISE35-R-25-M (Switch body only)] (Note 4)								
		PNP output/Wiring bottom entry	—	ISE35-N-65-MLA [ISE35-N-65-M (Switch body only)] (Note 4)								
		PNP output/Wiring top entry	—	ISE35-R-65-MLA [ISE35-R-65-M (Switch body only)] (Note 4)								
Float type auto drain (Note 5)	N.O.	—	—	AD38	AD48							
	N.C.	AD17	AD27	AD37	AD47							
Attachment	Spacer	—	Y100	Y200	Y300	Y400	Y500	Y600				
	Check valve (Note 6) (Note 7)	—	AKM2000-□01 (□02)	AKM3000-(□01) (□02)	AKM4000-(□02) (□03)	—	—	—	—	—		
	Pressure switch (Note 7)	—	IS1000M-20	IS1000M-30	IS1000M-40	IS1000M-50	IS1000M-60					
	T-interface (Note 6) (Note 7)	Y110-M5	Y210-□01 (□02)	Y310-(□01) (□02)	Y410-(□02) (□03)	Y510-(□02) (□03)	Y610-□03 (□04)	Y610-(□03) (□04)				
	3-port valve for residual pressure release (Note 7)	—	VHS20-□01 (□02)	VHS30-□02 (□03)	VHS40-□03 (□04)	VHS40-□06	VHS50-□06 (□10)	—	—	—		
	Piping adapter (Note 7)	E100-M5	□01 (□02) (□03)	□02 (□03) (□04)	□02 (□03) (□04)	□02 (□03) (□04)	E500-□06	E600-□06 (□10)				
	Pressure switch with piping adapter (Note 7)	—	□01 (□02) (□03)	□02 (□03) (□04)	□02 (□03) (□04)	□02 (□03) (□04)	—	—	—	—		
	Cross spacer (Note 7)	Y14-M5	Y24-□01 (□02)	Y34-□01 (□02)	Y44-□02 (□03)	Y54-□03 (□04)	—	—	—	—		

Note 1) □ in part numbers for a round pressure gauge indicates a type of connection thread. No indication is necessary for R; however, indicate N for NPT. Please contact SMC regarding the connection thread NPT and pressure gauge supply for psi unit specifications.

Note 2) Including one O-ring and 2 mounting screws

Note 3) Standard pressure gauge

Note 4) Lead wire with connector (2 m), adapter, lock pin, O-ring (1 pc.), mounting screw (2 pcs.) are attached. [ ]: Switch body only.

Also, regarding how to order the digital pressure switch, please refer to page 388.

Note 5) Minimum operating pressure: N.O. type=0.1 MPa; N.C. type=0.1 MPa (AD17/27) and 0.15 MPa (AD37/47). Please contact SMC for psi and °F unit specifications.

Note 6) For F.R.L. units, port sizes without ( ) are standard specifications.

Note 7) Separate interfaces are required for modular unit.

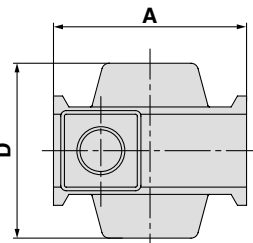
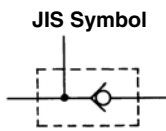
## Check Valve: (K) 1/8, 1/4, 3/8

A check valve with intermediate air release port can be easily installed to prevent a backflow of lubricant when redirecting the air flow and releasing the air on the outlet side of the regulator.

**AKM 30 00 - □ 01**

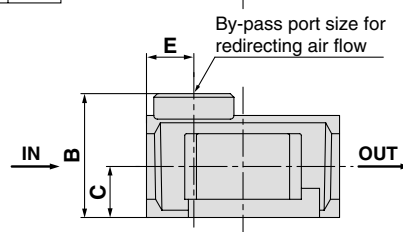
①      ②      ③

Symbol	Description	① Body size			
		20	30	40	
② Thread type	Nil	Rc	●	●	●
	N	NPT	●	●	●
	F	G	●	●	●
③ By-pass port size	01	1/8	●	●	—
	02	1/4	●	●	●
	03	3/8	—	—	●



### Specifications

Model	Effective area (mm <sup>2</sup> )
AKM2000	28
AKM3000	55
AKM4000	111



Model	By-pass port size	A	B	C	D	E	Applicable model
AKM2000	1/8, 1/4	40	28	11	40	11	AC20, AC20A
AKM3000	1/8, 1/4	53	34	14	48	13	AC25, AC25A AC30, AC30A
AKM4000	1/4, 3/8	70	42	18	54	15	AC40, AC40A (Note)

Note) A pressure switch cannot be mounted on the AC40□-06.

\* Refer to the attachment table above for standard by-pass port sizes applicable to the AC.

Be sure to use above check valves when redirecting the air flow on the inlet side of the lubricator. Threads for IN and OUT ports are not machined.



AC

AF□

AR

AL

AW□

A□G

AV

AF800

AF900

## X-ON Electronics

Largest Supplier of Electrical and Electronic Components

*Click to view similar products for [Other Tools](#) category:*

*Click to view products by [SMC](#) manufacturer:*

Other Similar products are found below :

[CR-05FL7--150R](#) [CR-05FL7--698K](#) [899-2-KT46](#) [899-5-KT46](#) [CR-0AFL4--332K](#) [CR-12FP4--260R](#) [CRCW04021961FRT7](#) [5800-0090](#)  
[CRCW0603102JRT5](#) [59065-5](#) [00-8273-RDPP](#) [00-8729-WHPP](#) [593033](#) [593058](#) [593072](#) [593564100](#) [593575](#) [593591](#) [593593](#) [011349-000](#)  
[LTI506SBLAMNBL](#) [LUC-012S070DSM](#) [LUC-018S070DSP](#) [599-2021-3-NME](#) [599-JJ-2021-03](#) [00-5080-YWPP](#) [5E4750/01-20R0-T/R](#)  
[LW1A-L1-GL](#) [LW1A-P1-GD](#) [LW1L-A1C10V-GL](#) [LW1L-M1C70-A](#) [0202-0173](#) [00-9089-RDPP](#) [00-9300-RDPP](#) [01-1003W-8/32-10](#) [601-](#)  
[GP-08-KT39](#) [601-JJ-06](#) [601-SPB](#) [601YSY](#) [602-JJ-03](#) [602SPB](#) [602Z](#) [603-JJ-07-FP](#) [603-JJY-04](#) [604J](#) [604-JJ-05](#) [CRTN1013](#) [CS16](#) [6-](#)  
[1579014-0](#) [CSB2](#)