

REVISION CL

DO NOT SCALE FROM THIS PRINT

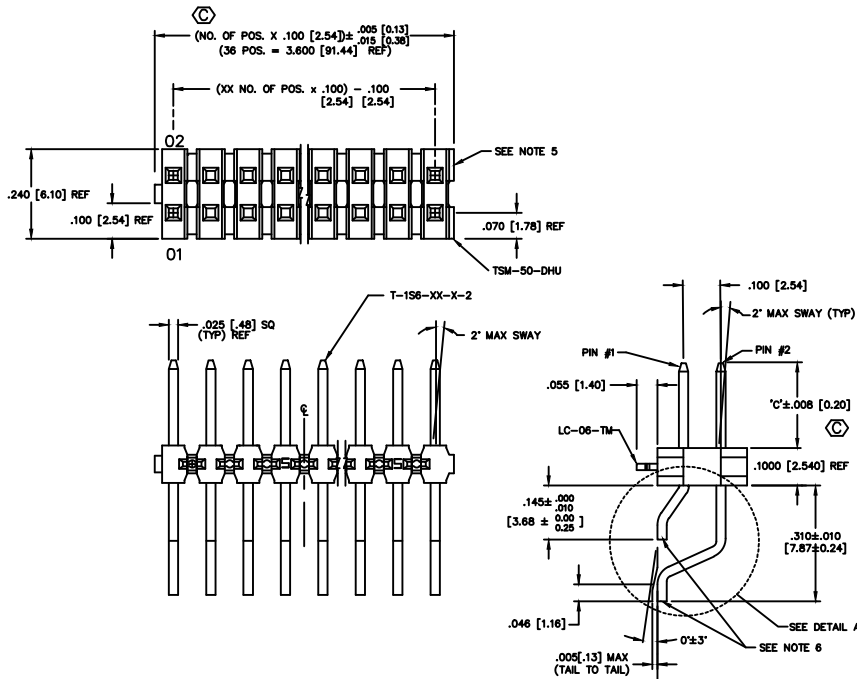
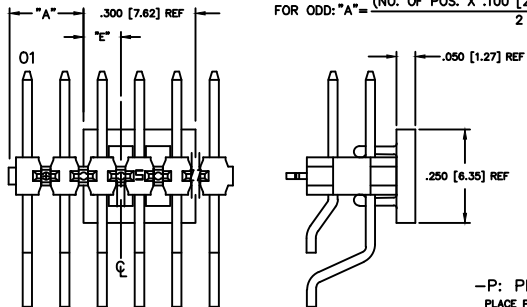


FIG 1

-LC: LOCKING CLIP OPTION
CLIPS N/A WITH -A OPTION.

DIFFERENT AS SHOWN, OTHERWISE SAME AS FIG 1.

FOR EVEN: "A" = $\frac{(\text{NO. OF POS. X } .100 [2.54]) - .300 [7.62]}{2} + .050 [1.27]$
 FOR ODD: "A" = $\frac{(\text{NO. OF POS. X } .100 [2.54]) - .300 [7.62]}{2}$



POS.	"E"
ODD	.150 [3.81]
EVEN	.100 [2.54]

FIG 3

-P: PICK & PLACE PAD
PLACE PPP-08 ON ϕ AS SHOWN

No OF POS	S/S BOW
02 - 10	.0030 [0.80]
11 - 20	.0050 [1.27]
21 - 30	.0070 [1.78]
31 - 36	.0080 [2.03]

DIMENSIONS ARE IN INCHES		UNLESS OTHERWISE NOTED		TOLERANCES ARE:		TITLE:		DWG NO:	
ONE PLACE DECIMALS ± .1 [3]	THREE PLACE DECIMALS ± .005 [0.13]	ANGLES	± 2°	TERMINAL STRIP		DOUBLE SURFACE MOUNT		TSM-1XX-XX-XXX-XX-XX-XXX-XX	
TWO PLACE DECIMALS ± .01 [0.3]	FOUR PLACE DECIMALS ± .0020 [0.051]	SHEET 1 OF 3							

TSM-1XX-XX-XXX-XX-XX-XXX-XX

NO. OF POSITIONS
-02 THRU -36

LEAD STYLE
(SEE TABLE 1)

OPTION #3

-P: PICK & PLACE PAD, SEE FIG 3
(USE PPP-08)
(AVAILABLE ON POS -05 THRU -36)
(AVAILABLE ON POS -02 THRU -04
WITH -TR OPTION ONLY)
(NOT AVAILABLE WITH -K OPTION)

-TR: TAPE & REEL (29 POS MAX)
(AVAILABLE FOR -DH ONLY)

-K: POLYIMIDE FILM (SEE FIG 5, SHT 2)
(NOT AVAILABLE WITH -P OPTION)
(USE K-DOT-197-344-.005)
(AVAILABLE ON POS -04 THRU -36)
(AVAILABLE ON POS -02 THRU -03
WITH -TR OPTION ONLY)

OPTION #2

POLARIZED POSITION: SPECIFY OMITTED PIN

OPTION #1

-LC: LOCKING CLIP (USE LC-06-TM - SEE FIG. 1) (SEE NOTE 13)
(03-36 POS USE 2 PER STRIP, 02 POS USE 1 PER STRIP)
(USE TSM-XX-DHU)
(NOT AVAILABLE WITH -A OR -SL OPTIONS)

-A: ALIGNMENT PIN (SEE FIG 2, SHT 3)
(STAKED: 4 POS MIN) (MOLDED: 2 POS MIN)
(NOT AVAILABLE WITH -LC OR -SL OPTIONS)
LEAVE BLANK FOR NO HOLD DOWN OPTION.

-SL: SOLDER LOCK (SEE FIG 6, SHT 2)
(2 POSITION MINIMUM)
(NOT AVAILABLE WITH -LC OR -A OPTIONS)

PLATING SPECIFICATION

- T: MATTE TIN CONTACT AND TAIL
- S: 30μ" SELECTIVE GOLD IN CONTACT AREA, MATTE TIN ON TAIL
- L: 10μ" SELECTIVE GOLD IN CONTACT AREA, MATTE TIN ON TAIL
- F: 3μ" FLASH SELECTIVE GOLD IN CONTACT AREA, MATTE TIN ON TAIL
- H: 30μ" HEAVY GOLD IN CONTACT AREA, 3μ" FLASH GOLD ON TAIL
- TL: TIN/LEAD (90/10+/-5) CONTACT AND TAIL
- STL: 30μ" SELECTIVE GOLD, ON CONTACT, TIN/LEAD (90/10+/-5) TAIL
- SM: 30μ" SELECTIVE GOLD, IN CONTACT AREA, MATTE TIN ON TAIL
- LM: 10μ" LIGHT SELECTIVE GOLD IN CONTACT AREA, MATTE TIN ON TAIL
- FM: 3μ" FLASH SELECTIVE GOLD, IN CONTACT AREA, MATTE TIN ON TAIL
- TM: MATTE TIN CONTACT AND TAIL
- SS: 30μ" STRIPED SELECTIVE GOLD IN CONTACT, MATTE TIN ON TAIL (SEE NOTE 14)

ROW OPTION

- DH: DOUBLE HORIZONTAL
(USE TSM-50-DHU)
- MT: MIXED TECHNOLOGY (SEE FIG. 4 & TABLE 1)
(NOT AVAILABLE WITH -LC, -SL, -TR OR -A OPTIONS)

NOTES:

1. ϕ REPRESENTS A CRITICAL DIMENSION.
2. DELETED
3. DELETED
4. DELETED
5. .005 [0.13] MAX CUT FLASH.
6. .002 [0.51] MAX BURR. MUST BE AWAY FROM SMT BOARD SIDE.
7. DELETED
8. CUT TO POSITION BODIES TO BE MULTI-CUT OR ROTO-CUT ONLY, NEVER AIR CUT.
9. TUBE POSITIONS 5-36, BULK PACKAGE POSITIONS 2-4.
10. 3 LBS. MIN PUSHOUT FORCE.
11. -04 LEAD STYLE DOES NOT MATE WITH SSM-DH.
12. ORIENTATION OF PART IN TAPE AND REEL TO BE CONTROLLED BY POCKET DESIGN.
13. DUE TO THE HIGH AMOUNT OF INSERTION FORCE NEEDED, THE -LC OPTION IS NOT COMPATIBLE WITH AUTO PLACEMENT. SAMTEC RECOMMENDS MANUAL PLACEMENT FOR ALL ASSEMBLIES WITH THE -LC OPTION.
14. -SS OPTION ONLY AVAILABLE IN LEAD STYLE -01 AND CAN ONLY MATE WITH SSW, SSO, SSM, ESW, ESQ AND BCS.

ROW OPTION	LEAD STYLE	BOTTOM ROW PIN #1	TOP ROW PIN #2	"c"
-DH	-01	T-1S6-08-X-2	T-1S6-10-X-2	.230 [5.84]
-DH	-02	T-1S6-09-X-2	T-1S6-11-X-2	.320 [8.13]
-DH	-03	T-1S6-09-X-2	T-1S6-20-X-2	.420 [10.67]
-DH	-04 (SEE NOTE 11)	T-1S6-08-X-2	T-1S6-09-X-2	.120 [3.05]
-MT	-01	T-1S6-08-X-2	T-1S6-20-X-2	.230 [5.84]
-MT	-02	T-1S6-15-X-2	T-1S6-20-X-2	.320 [8.13]
-MT	-03	T-1S6-09-X-2	T-1S6-20-X-2	.420 [10.67]

MATERIAL:
INSULATOR:
LCP, UL 94 VO
COLOR: BLACK
TERMINALS:
PHOSPHOR BRONZE

EXISPROD ASSEMBLY 100
TSM-DH
samtec

520 PARK EAST BLVD. NEW ALBANY, INDIANA 47150
PHONE (812) 944-6733 P.O. BOX 1147
CODE 55322

MADE BY: BRATCHER 7-27-85

TSM-1XX-XX-XXX-XX-XX-XXX-XX
SHEET 1 OF 3

PROPRIETARY NOTE
THIS DOCUMENT CONTAINS INFORMATION THAT IS UNCLASSIFIED AND PUBLIC RELEASE IS AUTHORIZED BY SAMTEC. THIS INFORMATION IS NOT TO BE REPRODUCED OR TRANSMITTED IN ANY FORM OR BY ANY MEANS, ELECTRONIC OR MECHANICAL, INCLUDING PHOTOCOPYING, RECORDING, OR BY ANY INFORMATION STORAGE AND RETRIEVAL SYSTEM, WITHOUT THE WRITTEN PERMISSION OF SAMTEC.

X-ON Electronics

Largest Supplier of Electrical and Electronic Components

Click to view similar products for [Headers & Wire Housings](#) category:

Click to view products by [Samtec](#) manufacturer:

Other Similar products are found below :

[95000-104TRLF](#) [10135584-644402LF](#) [DF62W-EP2022PCA](#) [95000-106TRLF](#) [DF62W-2022SCA](#) [DF62W-EP2022PC](#) [2203348](#) [DF62W-2022SC](#) [1084018](#) [1029039](#) [1084017](#) [802-10-012-10-002000](#) [1112640](#) [1112639](#) [000-34000](#) [0009482033](#) [0009507031](#) [57102-S06-03LF](#) [57202-S52-04LF](#) [PCN6-15S-2.5E](#) [0039019024](#) [58102-G61-06LF](#) [582553-1](#) [0009485154](#) [0009508121](#) [0022285053](#) [0050291907](#) [018731A](#) [LY20-4P-DT1-P1E-BR](#) [02.125.8002.8](#) [60101931](#) [60598-1 \(Cut Strip\)](#) [M1625-3R/100](#) [61062-3](#) [61082-181009](#) [636-1427](#) [638009-1](#) [641938-9](#) [641991-4](#) [644168-1](#) [647662-1](#) [65039-019ELF](#) [65817-002LF](#) [65817-015LF](#) [65863-015LF](#) [66207-023LF](#) [67016-026LF](#) [67046-001LF](#) [67095-007LF](#) [67230-005LF](#)